

MCX Plug (Male) Termination (Load) 1 Watts to 6 GHz, Gold Plated Beryllium Copper, 1.3 VSWR



ST6011

Features

- DC to 6 GHz Frequency Range
- VSWR 1.3:1 Max
- Max Power 1 Watt (CW)
- MCX Plug Coaxial Interface

Applications

- Wireless
- SatCom
- Radar Systems
- Test and Measurement
- Commercial and Military Communication

Description

RF termination (also called RF load or dummy load) ST6011 from Fairview Microwave operates from DC to 6 GHz and handles up to 1 Watt (CW). This MCX termination (or load) has a plug connection type. ST6011 MCX load termination offers 1.3:1 max VSWR.

RF terminations / loads are critical passive components in many RF, microwave and millimeter wave systems where signal reflection from unused ports can reduce the signal integrity and can potentially damage the device. By terminating an unused port with a matched load (dummy load), the incident energy will be absorbed with minimal reflection. These radio frequency termination components are commonly used to terminate devices such as couplers, circulators, and switches. Loads / terminations are also widely used in measurement systems to ensure accurate results. Fairview offers a large selection of in-stock RF, microwave and millimeter wave terminations up to 65 GHz with great performance over the entire operating range and with power handling capabilities up to 800 Watts (CW).

Electrical Specifications

Description	Minimum	Typical	Maximum	Units
Frequency Range	DC		6	GHz
Impedance		50		Ohms
VSWR, Input			1.3:1	
Input Power (CW)			1	Watt

Mechanical Specifications

Size

Length	0.49 in [12.45 mm]
Width	0.2 in [5.08 mm]
Weight	0.0036 lbs [1.63 g]
Package Type	Connectorized

Configuration

Connector	MCX Plug
Connector Specification	

Material Specifications

Description	Material	Plating
Connector 1 Contact	Brass	Gold
Insulation	PTFE	
Body	Beryllium Copper	Gold
Housing	Beryllium Copper	Gold

MCX Plug (Male) Termination (Load) 1 Watts to 6 GHz, Gold Plated Beryllium Copper, 1.3 VSWR



ST6011

Environmental Specifications

Temperature

Operating Range

-45 to 120 deg C

Compliance Certifications (see [product page](#) for current document)

Plotted and Other Data

Notes:

MCX Plug (Male) Termination (Load) 1 Watts to 6 GHz, Gold Plated Beryllium Copper, 1.3 VSWR from Fairview Microwave is in-stock and available to ship same-day. All of our RF/microwave products are available off-the-shelf from our ISO 9001:2008 certified facilities in Lewisville, Texas. Fairview Microwave is RF on-demand.

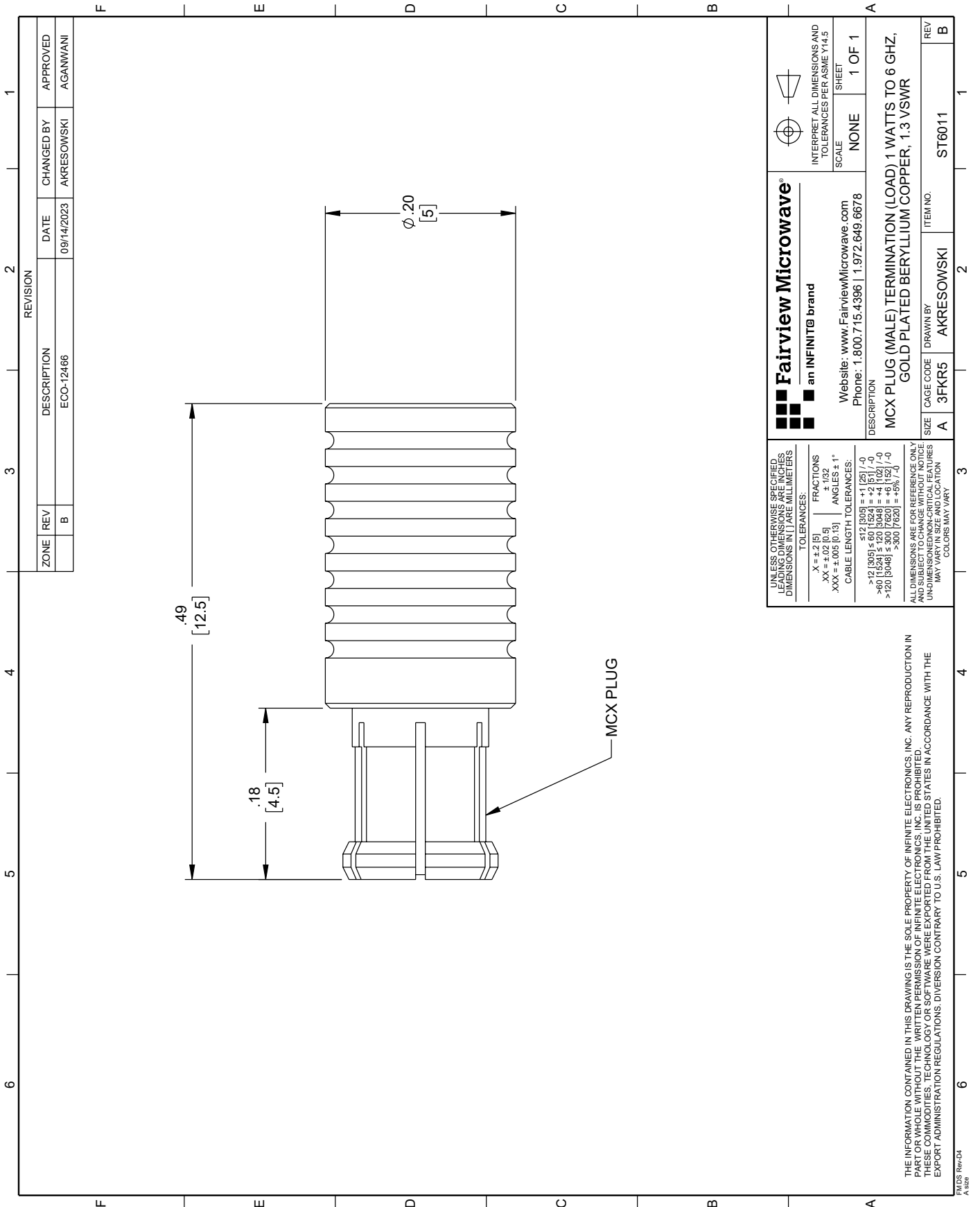
For additional information on this product, please click the following link: [MCX Plug \(Male\) Termination \(Load\) 1 Watts to 6 GHz, Gold Plated Beryllium Copper, 1.3 VSWR ST6011](#)

URL: <https://www.fairviewmicrowave.com/rf-load-1-watts-6-ghz-mcx-plug-st6011-p.aspx>

The information contained within this document is accurate to the best of our knowledge and representative of the part described herein. It may be necessary to make modifications to the part and/or the documentation of the part in order to implement improvements. Fairview Microwave reserves the right to make such changes as required. Unless otherwise stated, all specifications are nominal. Fairview Microwave does not make any representation or warranty regarding the suitability of the part described herein for any particular purpose, and Fairview Microwave does not assume liability arising out of the use of any part or document.

ST6011 CAD Drawing

MCX Plug (Male) Termination (Load) 1 Watts to 6 GHz, Gold Plated Beryllium Copper, 1.3 VSWR



ZONE		REV	DESCRIPTION	DATE	CHANGED BY	APPROVED
B			ECO-12466	09/14/2023	AKRESOWSKI	AGANWANI

REVISION	

<p>Fairview Microwave® an INFINITE® brand</p> <p>Website: www.FairviewMicrowave.com Phone: 1.800.715.4396 1.972.649.6678</p>	<p>INTERPRET ALL DIMENSIONS AND TOLERANCES PER ASME Y14.5</p> <p>SCALE: NONE</p> <p>SHEET: 1 OF 1</p>
	<p>DESCRIPTION: MCX PLUG (MALE) TERMINATION (LOAD) 1 WATTS TO 6 GHZ, GOLD PLATED BERYLLIUM COPPER, 1.3 VSWR</p> <p>SIZE: A CAGE CODE: 3FKR5 DRAWN BY: AKRESOWSKI ITEM NO: ST6011</p>

UNLESS OTHERWISE SPECIFIED, LEADING DIMENSIONS ARE IN INCHES AND DIMENSIONS IN [] ARE IN MILLIMETERS

TOLERANCES:

X = ±.2 [5]	FRACTIONS ± 1/32
.XX = ±.02 [0.5]	ANGLES ± 1°
.XXX = ±.005 [0.13]	

CABLE LENGTH TOLERANCES:

<12 [305]	±.1 [2.5] / -0
>12 [305] ≤ 60 [1524]	±.2 [5] / -0
>60 [1524] ≤ 120 [3048]	±.4 [102] / -0
>120 [3048] ≤ 300 [7620]	±.6 [152] / -0
>300 [7620]	±.9 [22.9] / -0

ALL DIMENSIONS ARE FOR REFERENCE ONLY AND SUBJECT TO CHANGE WITHOUT NOTICE. DIMENSIONS IN PARENTHESES ARE IN INCHES. DIMENSIONS IN [] ARE IN MILLIMETERS. COLORS MAY VARY.

THE INFORMATION CONTAINED IN THIS DRAWING IS THE SOLE PROPERTY OF INFINITE ELECTRONICS, INC. ANY REPRODUCTION IN PART OR WHOLE, WITHOUT THE WRITTEN PERMISSION OF INFINITE ELECTRONICS, INC. IS PROHIBITED. THESE COMMODITIES, TECHNOLOGY OR SOFTWARE WERE EXPORTED FROM THE UNITED STATES IN ACCORDANCE WITH THE EXPORT ADMINISTRATION REGULATIONS. DIVERSION CONTRARY TO U.S. LAW PROHIBITED.

FAIRVIEW Rev-04
A 1/26