

SMW284AC

WR284 to SMA-F WAVEGUIDE TO COAXIAL ADAPTER

FREQUENCY: 2.6-3.95 GHZ

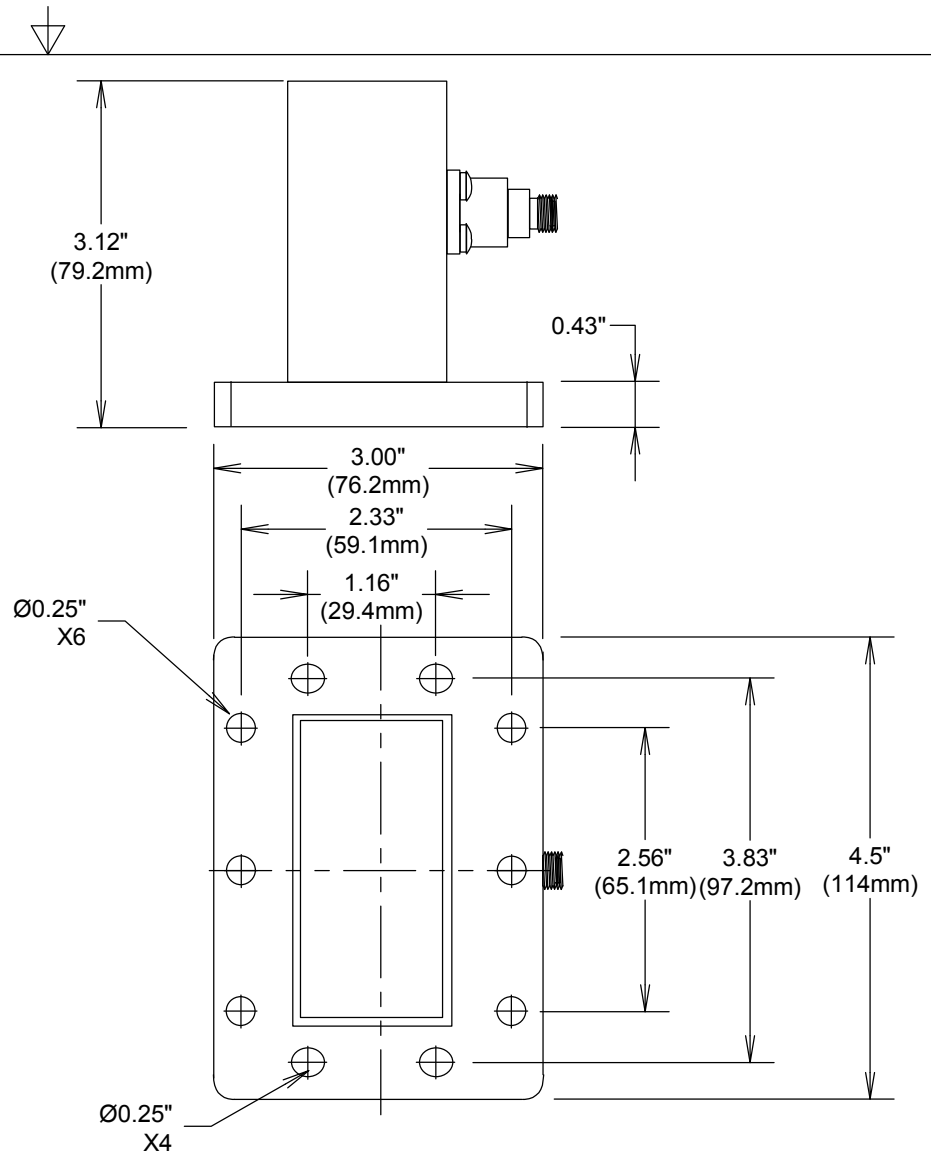
VSWR: 1.25:1

MATERIAL BODY: AI

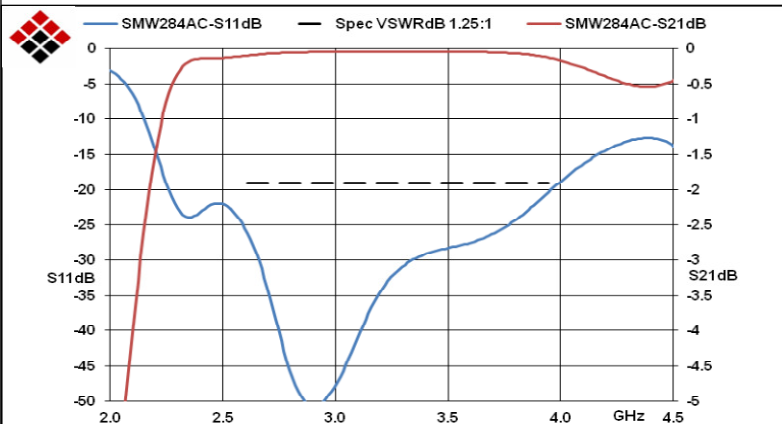
MATERIAL CONNECTORS:

BODY: PASSIVATED STAINLESS STEEL

CONTACTS: BeCu Au PLATED PASSIVATED 30μ-in



MEASUREMENTS BELOW ARE TYPICAL



ALL DIMENSIONS IN inches(MM) Typical

FAIRVIEW MICROWAVE INC.

ALLEN, TX 75013 WWW.FAIRVIEWMICROWAVE.COM

TITLE

WR284 to SMA-F WAVEGUIDE TO COAXIAL ADAPTER

SIZE

A

CAGE CODE

3FKR5

DWG NO

SMW284AC

REV

A

SCALE

SHEET