

## N Adjustable Phase Trimmer With an Adjustable Phase of 15 Deg. Per GHz From DC to 10 GHz, Stainless Steel Body

Fairview Microwave's SMP8208 is a phase trimmer that has phase adjustment range of 15 degrees per GHz with a frequency range from DC to 10 GHz. With N male to N female connectors, this RF phase trimmer design is tried and true technology that offers exceptional RF performance characteristics that include a maximum VSWR of 1.2:1. Phase trimmers are part of Fairview Microwave's comprehensive RF passive product offerings which are available in stock and ready for same-day shipment.



### Electrical Specifications (Values at +25° C, Sea Level)

Description	Min	Typ	Max	Units
Frequency Range	DC		10	GHz
Impedance		50		Ohms
Phase Adjustment		15		Deg/GHz
Input VSWR			1.2:1	
Output VSWR			1.2:1	
Insertion Loss			0.6	dB
Input Power, CW			300	dBm

### Mechanical Specifications

#### Size

Length	3.252 in [82.6 mm]
Width/Diameter	0.748 in [19 mm]
Height	0.748 in [19 mm]
Weight	0.031 lbs [14.06 g]
Body Material and Plating	Passivated Stainless Steel

#### Configuration

Input Connector	N Female
Input Connector Center Contact Material	Beryllium Copper
Input Connector Center Contact Plating	Gold
Output Connector	N Male
Output Connector Center Contact Material	Beryllium Copper
Output Connector Center Contact Plating	Gold

### Environmental Specifications

**Compliance Certifications** (see [product page](#) for current document)

### Plotted and Other Data

Notes:

### Features:

- Phase Adjustment: 15 Deg/GHz
- Frequency Range from DC to 10 GHz
- N Connectorized Design
- Insertion Loss: 0.6 dB Max
- Max VSWR 1.2:1
- Max Power Rating: 300 Watts (CW)

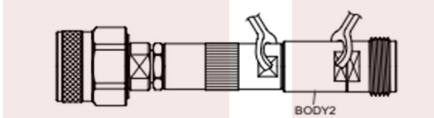
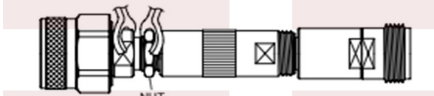
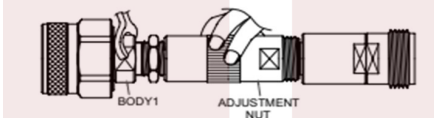
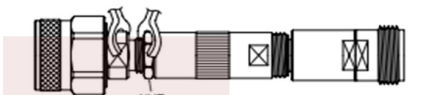
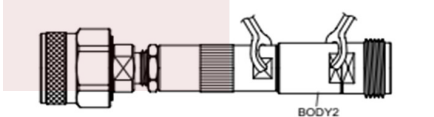
### Applications:

- Test & Measurements
- Radar Development
- Military Communications Systems
- Phase Array Antenna System
- Satellite Communications

Fairview Microwave  
 301 Leora Ln., Suite 100  
 Lewisville, TX 75056  
 Tel: 1-800-715-4396 / (972) 649-6678  
 Fax: (972) 649-6689  
[www.fairviewmicrowave.com](http://www.fairviewmicrowave.com)  
[sales@fairviewmicrowave.com](mailto:sales@fairviewmicrowave.com)

Sequence Diagram

**Phase Trimmer Instructions**

Diagram	Phase Trimmer Instructions
 <p>A side-view diagram of the phase trimmer assembly. The component labeled 'BODY2' is highlighted in red. A hand is shown using a spanner to loosen the nut on the right side of the assembly.</p>	<p>Step 1: Loosen BODY2 before adjusting Phase. Use Spanner size 11mm.</p>
 <p>A side-view diagram of the phase trimmer assembly. The component labeled 'NUT' is highlighted in red. A hand is shown using a spanner to loosen the nut.</p>	<p>Step 2: Loosen NUT before adjusting Phase. Use Spanner size 11mm.</p>
 <p>A side-view diagram of the phase trimmer assembly. The component labeled 'ADJUSTMENT NUT' is highlighted in red. A hand is shown manually turning the adjustment nut.</p>	<p>Step 3: Adjust to the required phase: Keep BODY1 in a fixed position and adjust phase by manually turning adjustment nut.</p>
 <p>A side-view diagram of the phase trimmer assembly. The component labeled 'NUT' is highlighted in red. A hand is shown using a spanner to tighten the nut.</p>	<p>Step 4: Tighten NUT after adjusting phase. Use Spanner size 11mm.</p>
 <p>A side-view diagram of the phase trimmer assembly. The component labeled 'BODY2' is highlighted in red. A hand is shown using a spanner to tighten the nut on the right side of the assembly.</p>	<p>Step 5: Tighten BODY2 after adjusting phase. Use Spanner size 11mm.</p>

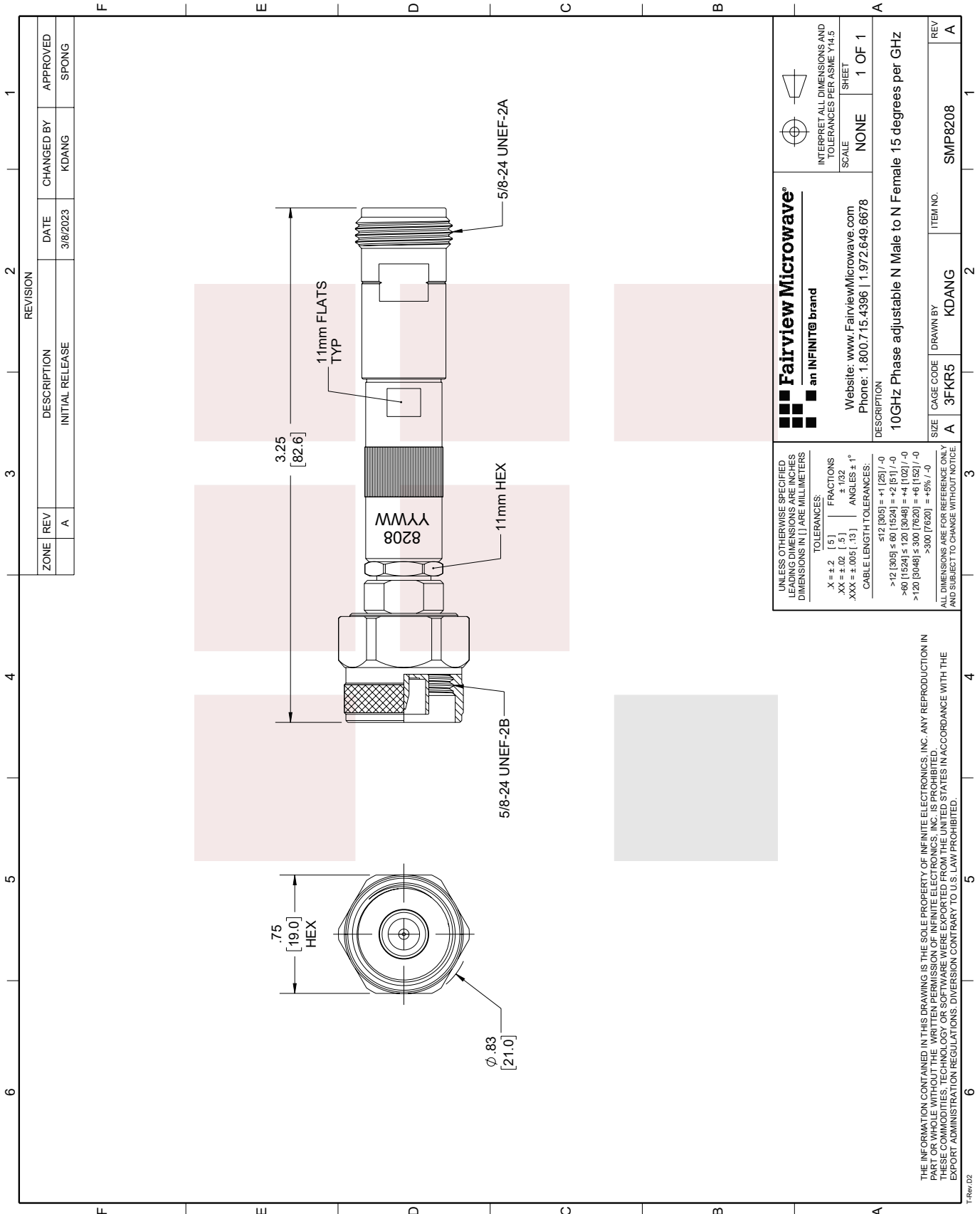
N Adjustable Phase Trimmer With an Adjustable Phase of 15 Deg. Per GHz From DC to 10 GHz, Stainless Steel Body from Fairview Microwave is in-stock and available to ship same-day. All of our RF/microwave products are available off-the-shelf from our ISO 9001:2008 certified facilities in Lewisville, Texas. Fairview Microwave is RF on-demand.

For additional information on this product, please click the following link: [N Adjustable Phase Trimmer With an Adjustable Phase of 15 Deg. Per GHz From DC to 10 GHz, Stainless Steel Body SMP8208](#)

URL: <https://www.fairviewmicrowave.com/n-adjustable-phase-trimmer-1-10-mhz-smp8208-p.aspx>

The information contained in this document is accurate to the best of our knowledge and representative of the part described herein. It may be necessary to make modifications to the part and/or the documentation of the part, in order to implement improvements. Fairview Microwave reserves the right to make such changes as required. Unless otherwise stated, all specifications are nominal. Fairview Microwave does not make any representation or warranty regarding the suitability of the part described herein for any particular purpose, and Fairview Microwave does not assume any liability arising out of the use of any part or documentation.





ZONE		REVISION		DATE		APPROVED	
A		INITIAL RELEASE		3/8/2023	KDANG	SPONG	

<p><b>Fairview Microwave</b> an INFINIT<sup>®</sup> brand</p> <p>Website: <a href="http://www.FairviewMicrowave.com">www.FairviewMicrowave.com</a> Phone: 1.800.715.4396   1.972.649.6678</p>		<p>INTERPRET ALL DIMENSIONS AND TOLERANCES PER ASME Y14.5 SHEET</p> <p>SCALE: NONE</p> <p>SHEET: 1 OF 1</p>	
<p>DESCRIPTION: 10GHz Phase adjustable N Male to N Female 15 degrees per GHz</p>			
SIZE: A	CAGE CODE: 3FKR5	DRAWN BY: KDANG	ITEM NO.: SMP8208
REV: A			REV: A

UNLESS OTHERWISE SPECIFIED, LEADING DIMENSIONS ARE INCHES DIMENSIONS IN [ ] ARE MILLIMETERS

TOLERANCES:

.X = ±.2	[.5]	FRACTIONS
.XX = ±.02	[.5]	± 1/32
.XXX = ±.005	[.13]	ANGLES ± 1°

CABLE LENGTH TOLERANCES:

>12 [305]	± 1/2 [12.7]
>60 [1524]	± 1/4 [6.35]
>120 [3048]	± 3/8 [9.52]
>300 [7620]	± 1/2 [12.7]

ALL DIMENSIONS ARE FOR REFERENCE ONLY AND SUBJECT TO CHANGE WITHOUT NOTICE

THE INFORMATION CONTAINED IN THIS DRAWING IS THE SOLE PROPERTY OF INFINITE ELECTRONICS, INC. ANY REPRODUCTION IN PART OR WHOLE WITHOUT THE WRITTEN PERMISSION OF INFINITE ELECTRONICS, INC. IS PROHIBITED. THESE COMMODITIES, TECHNOLOGY OR SOFTWARE WERE EXPORTED FROM THE UNITED STATES IN ACCORDANCE WITH THE EXPORT ADMINISTRATION REGULATIONS. DIVERSION CONTRARY TO U.S. LAW PROHIBITED.

T-Rev D2