

SMA Variable Phase Shifter with an Adjustable Phase of 60 Deg. Per GHz and from DC to 8.2 GHz

Electrical Specifications

Description	Min	Typ	Max	Units
Frequency Range	DC		8.2	GHz
Impedance		50		Ohms
Phase Adjustment	0		60	Deg/GHz
Input VSWR			1.5:1	
Output VSWR			1.5:1	
Insertion Loss			0.6	dB
Group Delay			170	ps
Input Power, CW			100	Watts
Input Power, Peak			3	kWatts

Electrical Specification Notes:
 Insertion Phase min. setting @ 1.0 GHz

Mechanical Specifications

Size	
Length	5.5 in [139.7 mm]
Width/Diameter	2 in [50.8 mm]
Height	1 in [25.4 mm]
Weight	0.9895 lbs [448.83 g]

Configuration

Input Connector	SMA Female
Output Connector	SMA Female

Environmental Specifications

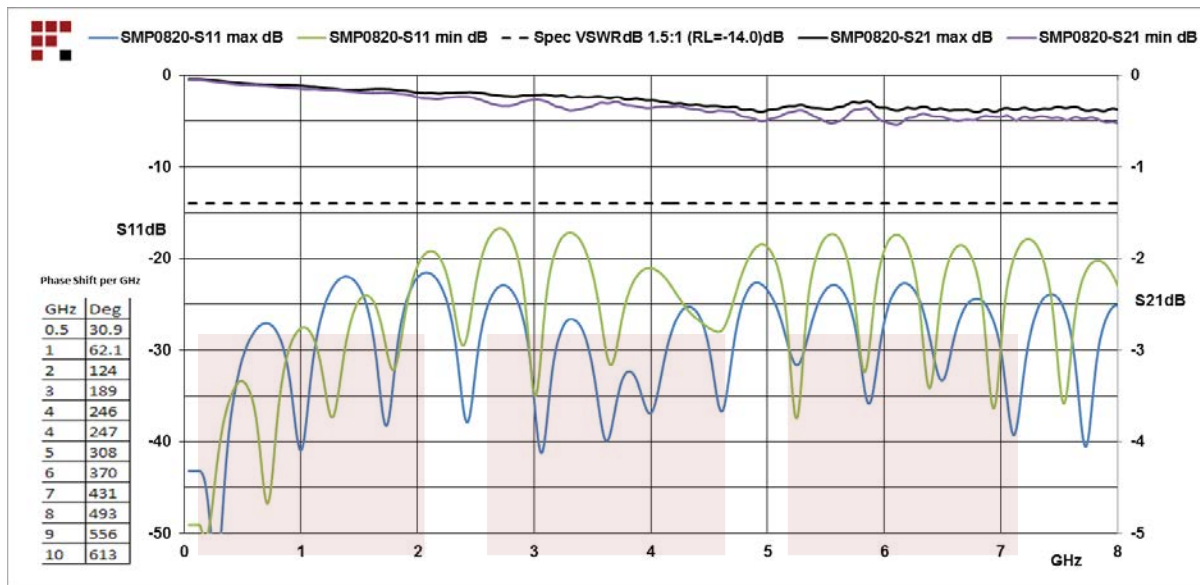
Compliance Certifications (see [product page](#) for current document)

Plotted and Other Data

Notes:

Fairview Microwave
 301 Leora Ln., Suite 100
 Lewisville, TX 75056
 Tel: 1-800-715-4396 / (972) 649-6678
 Fax: (972) 649-6689
www.fairviewmicrowave.com
sales@fairviewmicrowave.com

Typical Performance Data

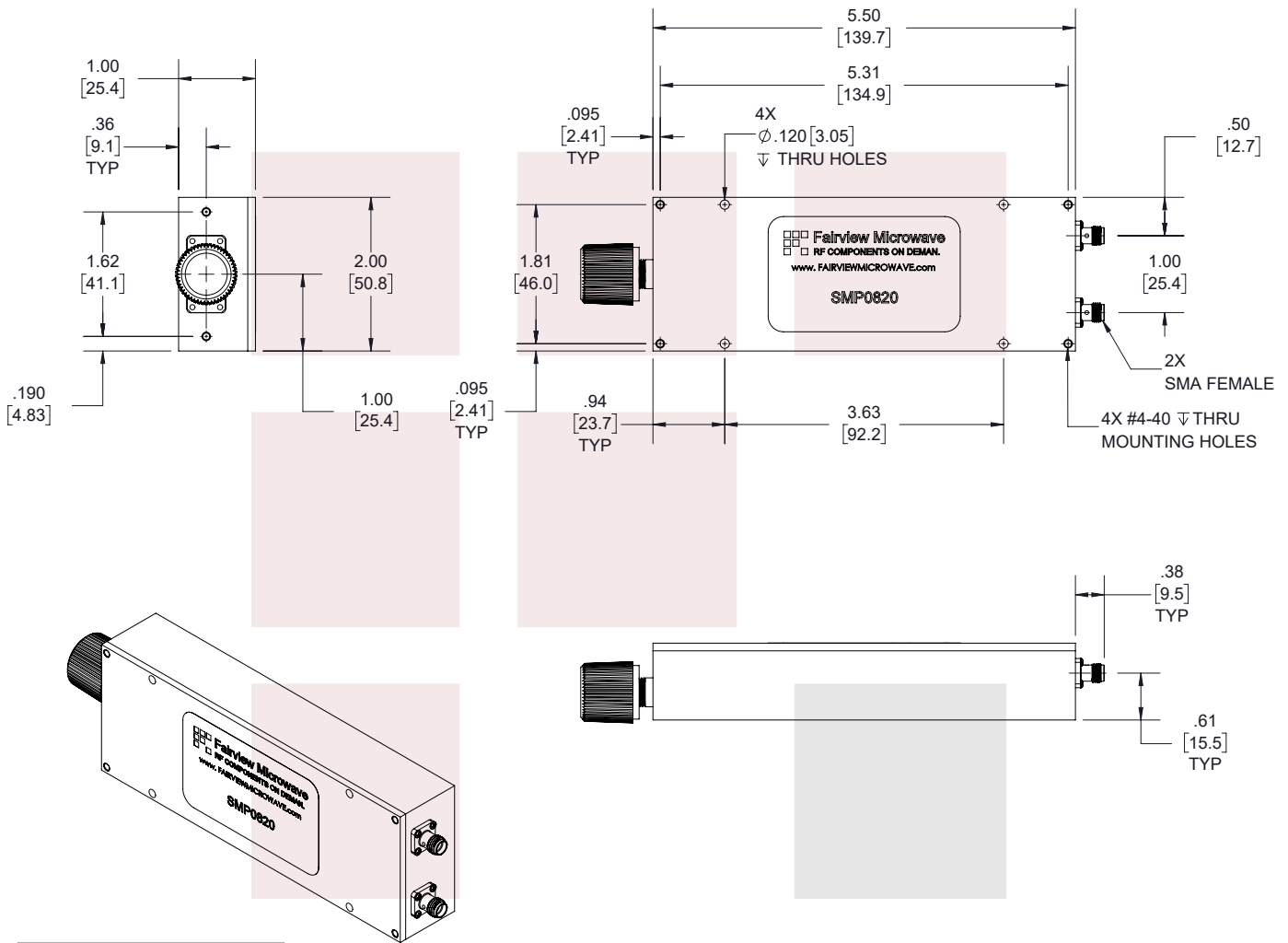


SMA Variable Phase Shifter with an Adjustable Phase of 60 Deg. Per GHz and from DC to 8.2 GHz from Fairview Microwave is in-stock and available to ship same-day. All of our RF/microwave products are available off-the-shelf from our ISO 9001:2008 certified facilities in Lewisville, Texas. Fairview Microwave is RF on-demand.

For additional information on this product, please click the following link: [SMA Variable Phase Shifter with an Adjustable Phase of 60 Deg. Per GHz and from DC to 8.2 GHz SMP0820](https://www.fairviewmicrowave.com/sma-variable-phase-shifter-dc-8.2-ghz-smp0820-p.aspx)

URL: <https://www.fairviewmicrowave.com/sma-variable-phase-shifter-dc-8.2-ghz-smp0820-p.aspx>

The information contained in this document is accurate to the best of our knowledge and representative of the part described herein. It may be necessary to make modifications to the part and/or the documentation of the part, in order to implement improvements. Fairview Microwave reserves the right to make such changes as required. Unless otherwise stated, all specifications are nominal. Fairview Microwave does not make any representation or warranty regarding the suitability of the part described herein for any particular purpose, and Fairview Microwave does not assume any liability arising out of the use of any part or documentation.



STANDARD TOLERANCES

.X ±0.2
.XX ±0.01
.XXX ±0.005

*STANDARD TOLERANCES APPLY ONLY TO DIMENSIONS IN INCHES

		<p>NOTES: 1. UNLESS OTHERWISE SPECIFIED ALL DIMENSIONS ARE NOMINAL. 2. ALL SPECIFICATIONS ARE SUBJECT TO CHANGE WITHOUT NOTICE AT ANY TIME. 3. DIMENSIONS ARE IN INCHES [mm].</p>	
<p>TITLE</p> <p>SMA Variable Phase Shifter with an Adjustable Phase of 60 Deg. Per GHz and from DC to 8.2 GHz</p>		<p>DWG NO</p> <p>SMP0820</p>	
		<p>CAGE CODE</p> <p>3FKR5</p>	
CAD FILE	03/13/19	SHEET	1 OF 1
SCALE	N/A	SIZE	A
			7361