

SMA Female (Jack) to SSMA Male (Plug) Adapter, Nickel Plated Brass Body, High Temp



SM4892

Configuration

- SMA Female Connector 1
- SSMA Male Connector 2
- 50 Ohms Impedance
- Straight Body Geometry

Features

- SMA interface meets MIL-STD-348
- SSMA interface meets MIL-STD-348
- Contact plating according to MIL-G-45204
- Gold Plated Beryllium Copper Contact

Applications

- Enables Between Series Connections
- General Purpose Test

Description

SMA female to SSMA male adapter part number SM4892 from Fairview Microwave is in-stock and ships same day. This Fairview SMA to SSMA adapter has a female to male gender configuration. SM4892 SMA female to SSMA male adapter operates to 18 GHz. The SMA connector mates mechanically with commercially available 3.5mm and 2.92mm (K) connectors.

RF adapters can be used to enable connections between two connector types that would otherwise not mate. Certain RF adapter configurations can also be used to protect connectors on expensive equipment where the number of connect and disconnect cycles is high. An RF, microwave, or millimeter wave adapter is connected to the equipment and the commonly changed connection is made with the adapter which can be easily replaced when it wears out after high usage; such adapters are referred to as connector savers. Fairview Microwave also offers bulkhead, panel mount, hermetically sealed, reverse polarity, and isolated ground adapter varieties to serve all of your RF, microwave and millimeter wave needs.

Electrical Specifications

Description	Minimum	Typical	Maximum	Units
Frequency Range	DC		18	GHz
Impedance		50		Ohms

Electrical Specification Notes:
Values at 25°C, sea level.

Mechanical Specifications

Size

Length	0.80 in [20.32 mm]
Width	0.25 in [6.35 mm]
Height	0.25 in [6.35 mm]
Weight	0.01 lbs [4.85 g]

Description	Connector 1	Connector 2
Polarity	Standard	Standard
Interface Specification	MIL-STD-348	MIL-STD-348
Mating Cycles, Min	500	500
Hex Size		1/4 inch

SMA Female (Jack) to SSMA Male (Plug) Adapter,
Nickel Plated Brass Body, High Temp



SM4892

Material Specifications

Description	Connector 1		Connector 2	
	Material	Plating	Material	Plating
Type	SMA Female		SSMA Male	
Contact	Beryllium Copper	Gold MIL-G-45204	Beryllium Copper	Gold MIL-G-45204
Outer Conductor	Brass	Nickel QQ-N-290		
Body			Brass	Nickel QQ-N-290
Coupling Nut			Brass	Nickel QQ-N-290

Environmental Specifications

Temperature
Operating Range -65 to +165 °C

SMA Female (Jack) to SSMA Male (Plug) Adapter, Nickel Plated Brass Body, High Temp

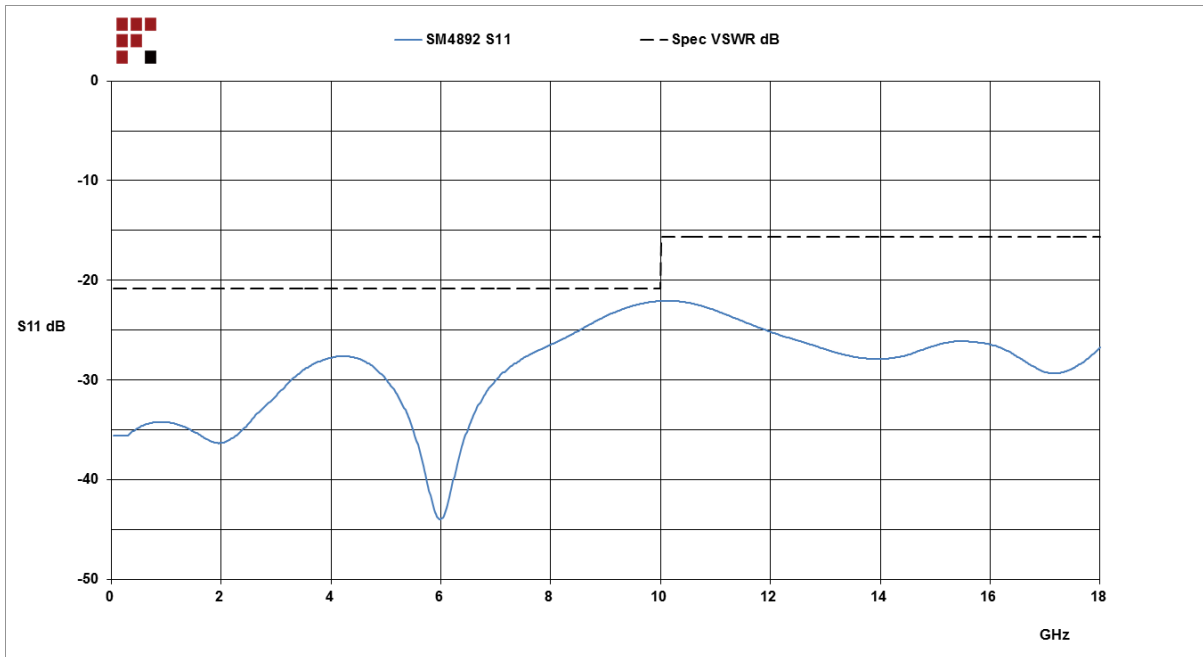


SM4892

Compliance Certifications (see [product page](#) for current document)

Plotted and Other Data

Typical Performance Data



SMA Female (Jack) to SSMA Male (Plug) Adapter, Nickel Plated Brass Body, High Temp from Fairview Microwave is in-stock and available to ship same-day. All of our RF/microwave products are available off-the-shelf from our ISO 9001:2008 certified facilities in Lewisville, Texas. Fairview Microwave is RF on-demand.

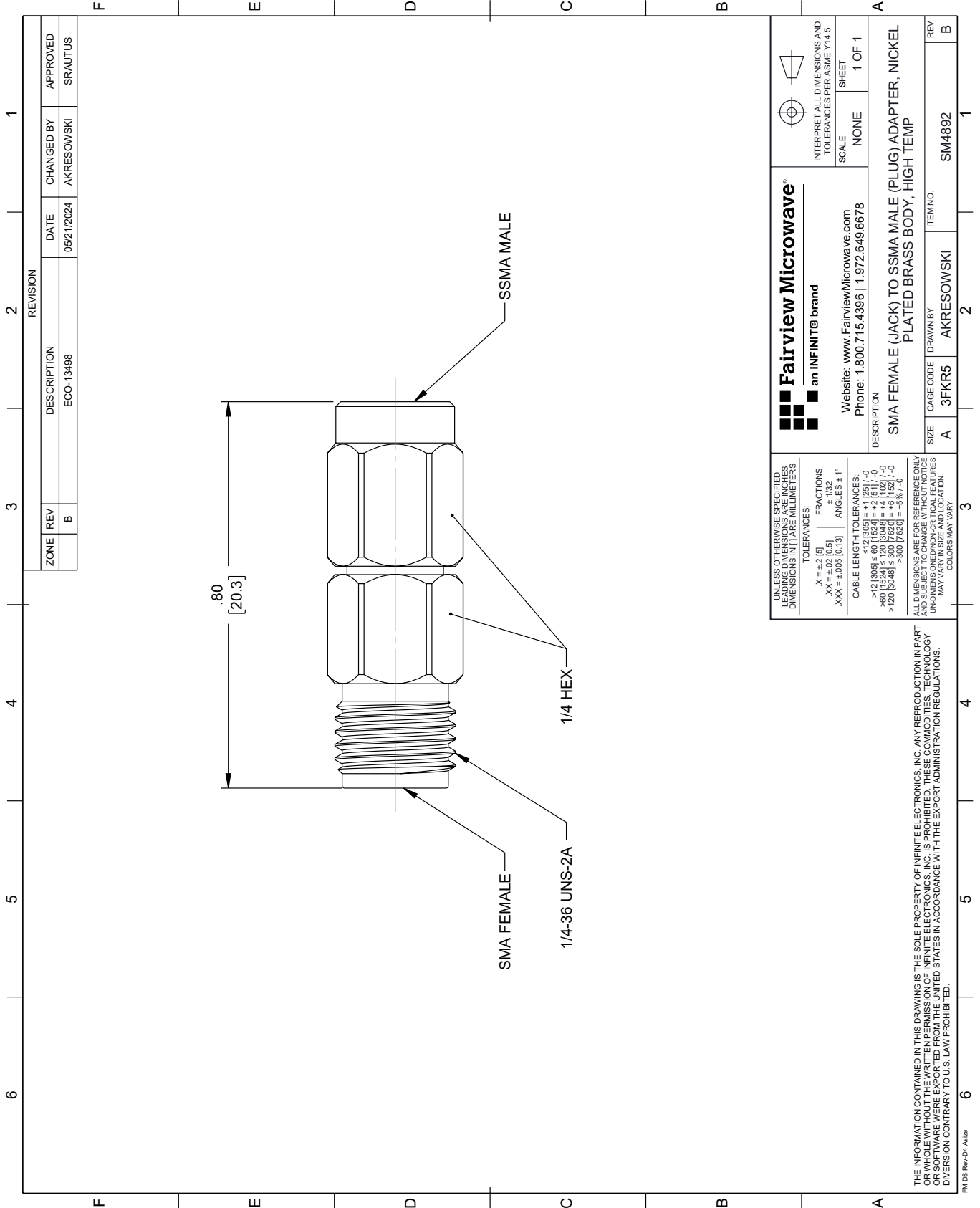
For additional information on this product, please click the following link: [SMA Female \(Jack\) to SSMA Male \(Plug\) Adapter, Nickel Plated Brass Body, High Temp SM4892](#)

URL: <https://www.fairviewmicrowave.com/sma-female-ssma-male-adapter-sm4892-p.aspx>

The information contained within this document is accurate to the best of our knowledge and representative of the part described herein. It may be necessary to make modifications to the part and/or the documentation of the part in order to implement improvements. Fairview Microwave reserves the right to make such changes as required. Unless otherwise stated, all specifications are nominal. Fairview Microwave does not make any representation or warranty regarding the suitability of the part described herein for any particular purpose, and Fairview Microwave does not assume liability arising out of the use of any part or document.

SM4892 CAD Drawing

SMA Female (Jack) to SSMA Male (Plug) Adapter, Nickel Plated Brass Body, High Temp



REVISION		DATE	CHANGED BY	APPROVED	
ZONE	REV	DESCRIPTION	ECO-13488	AKRESOWSKI	SRAUTUS
	B				

<p>Fairview Microwave® an INFINIT® brand</p> <p>Website: www.FairviewMicrowave.com Phone: 1.800.715.4396 1.972.649.6678</p>		<p>INTERPRET ALL DIMENSIONS AND TOLERANCES PER ASME Y14.5</p> <p>SCALE: NONE SHEET: 1 OF 1</p>
<p>DESCRIPTION: SMA FEMALE (JACK) TO SSMA MALE (PLUG) ADAPTER, NICKEL PLATED BRASS BODY, HIGH TEMP</p>		
SIZE: A	CAGE CODE: 3FKR5	ITEM NO.: SM4892
DRAWN BY: AKRESOWSKI		REV: B

UNLESS OTHERWISE SPECIFIED, LEADING DIMENSIONS ARE IN INCHES AND TRAILING DIMENSIONS ARE IN MILLIMETERS

TOLERANCES:
 .X = ±.2 [5] FRACTIONS ± 1/32
 .XX = ±.02 [0.5] ANGLES ± 1°
 .XXX = ±.005 [0.13]

CABLE LENGTH TOLERANCES:
 >12 [305] ≤ 60 [1524] = +.1 [25] / -0
 >60 [1524] ≤ 120 [3048] = +.4 [102] / -0
 >120 [3048] ≤ 300 [7620] = +.5 [12.7] / -0

ALL DIMENSIONS ARE FOR REFERENCE ONLY. UNLESS OTHERWISE SPECIFIED, ALL DIMENSIONS/DIMENSIONS/CRITICAL FEATURES MAY VARY IN SIZE AND LOCATION. COLORS MAY VARY.

THE INFORMATION CONTAINED IN THIS DRAWING IS THE SOLE PROPERTY OF INFINITE ELECTRONICS, INC. ANY REPRODUCTION IN PART OR WHOLE WITHOUT THE WRITTEN PERMISSION OF INFINITE ELECTRONICS, INC. IS PROHIBITED. THESE COMMODITIES, TECHNOLOGY OR SOFTWARE WERE EXPORTED FROM THE UNITED STATES IN ACCORDANCE WITH THE EXPORT ADMINISTRATION REGULATIONS. DIVISION CONTRARY TO U.S. LAW PROHIBITED.

PM DS Rev-D4 Alt2