

MMCX PCB EDGE LAUNCH

SC9582

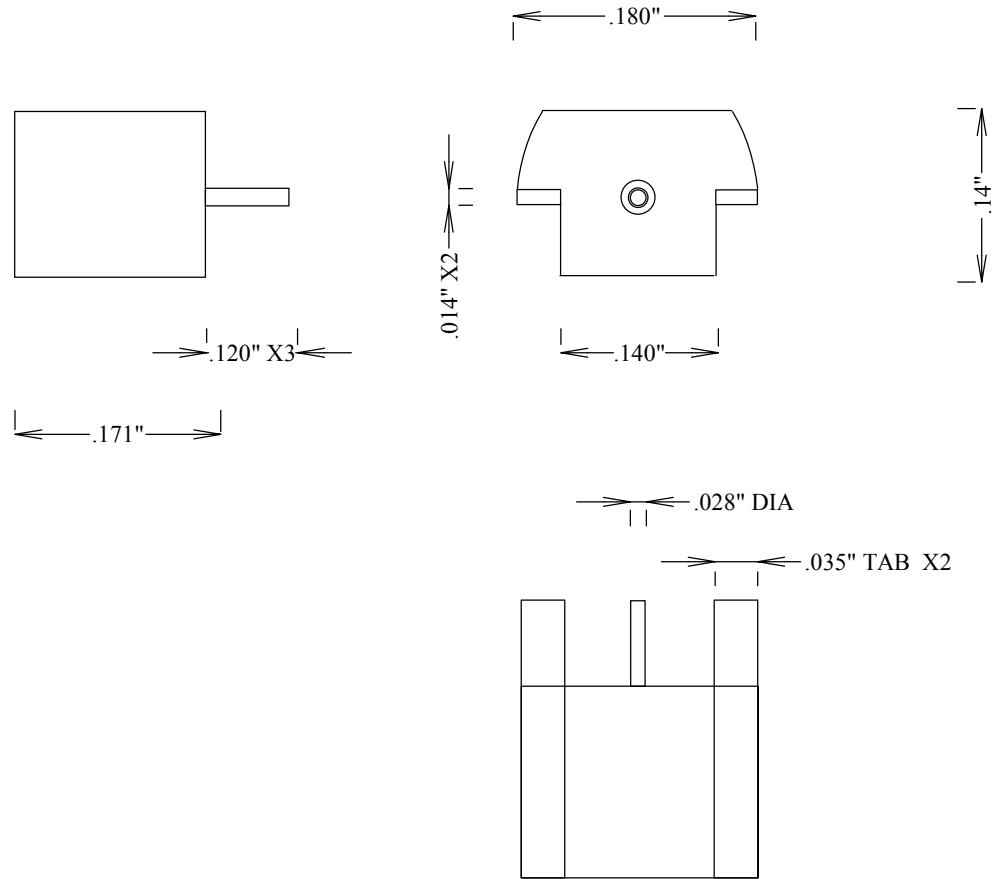
SPECIFICATIONS

ELECTRICAL:

FREQUENCY: 0-6 GHZ
 VSWR 1.25:1 MAX
 IMPEDANCE: 50 OHMS
 OP. TEMP RANGE: -55C to +125C

MECHANICAL:

MATERIAL BODY: BRASS AU PLATING
 CENTER CONTACT: BeCu
 CONTACT PLATING: Au MIL-G-45204
 CAPTIVATED CONTACT
 INSULATOR: TEFLON
 ROHS COMPLIANT



FAIRVIEW MICROWAVE INC.

ALLEN, TX 75013 WWW.FAIRVIEWMICROWAVE.COM

TITLE

MMCX PCB EDGE LAUNCH

SIZE	CAGE CODE	DWG NO	REV
A	3FKR5	SC9582	
SCALE	SHEET		