

2.4mm Female Bulkhead Precision Connector Clamp/ Solder Attachment For RG405 Cable , .252 inch D Hole

Configuration

Connector 2.4mm Female

Electrical Specifications*

Description	Min	Typ	Max	Units
Frequency Range	DC		50	GHz
Impedance		50		Ohms
VSWR			1.35:1	

* Values at 25°C, sea level

Mechanical Specifications

Size

Length 0.965 in [24.51 mm]
Width/Dia. 0.375 in [9.53 mm]

Connector

Type 2.4mm Female
Contact Material and Plating Beryllium Copper, Gold
Contact Plating Specification 50μ Inches.
Coupling Nut Material and Plating Passivated Stainless Steel
Coupling Nut Plating Specification SAE-AMS-2700
Body Material and Plating Passivated Stainless Steel
Body Plating Specification SAE-AMS-2700

Compliance Certifications (visit www.FairviewMicrowave.com for current document)

RoHS Compliant Yes



Features:

- Specification: IEEE-STD-P287*
- Interface: RG405
- Attachment: Clamp/Solder
- Design: Precision
- Body Style: Straight
- Mount Method: Bulkhead

Fairview Microwave
1130 Junction Dr. #100
Allen, TX 75013
Tel: 1-800-715-4396 / (972) 649-6678
Fax: (972) 649-6689
www.fairviewmicrowave.com
sales@fairviewmicrowave.com

Plotted and Other Data

Notes:

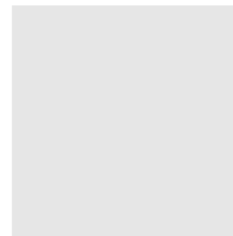
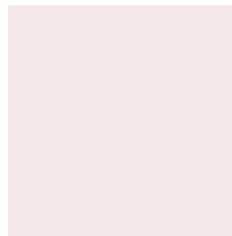
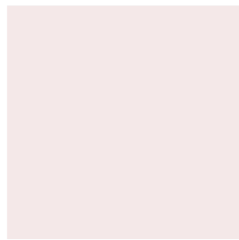
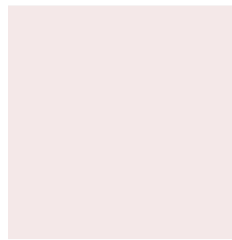
- Values at +25 °C, sea level
- *Connector Interface in compliance with Figure G.4. Except Conductor Tolerances and Contact Trcession.

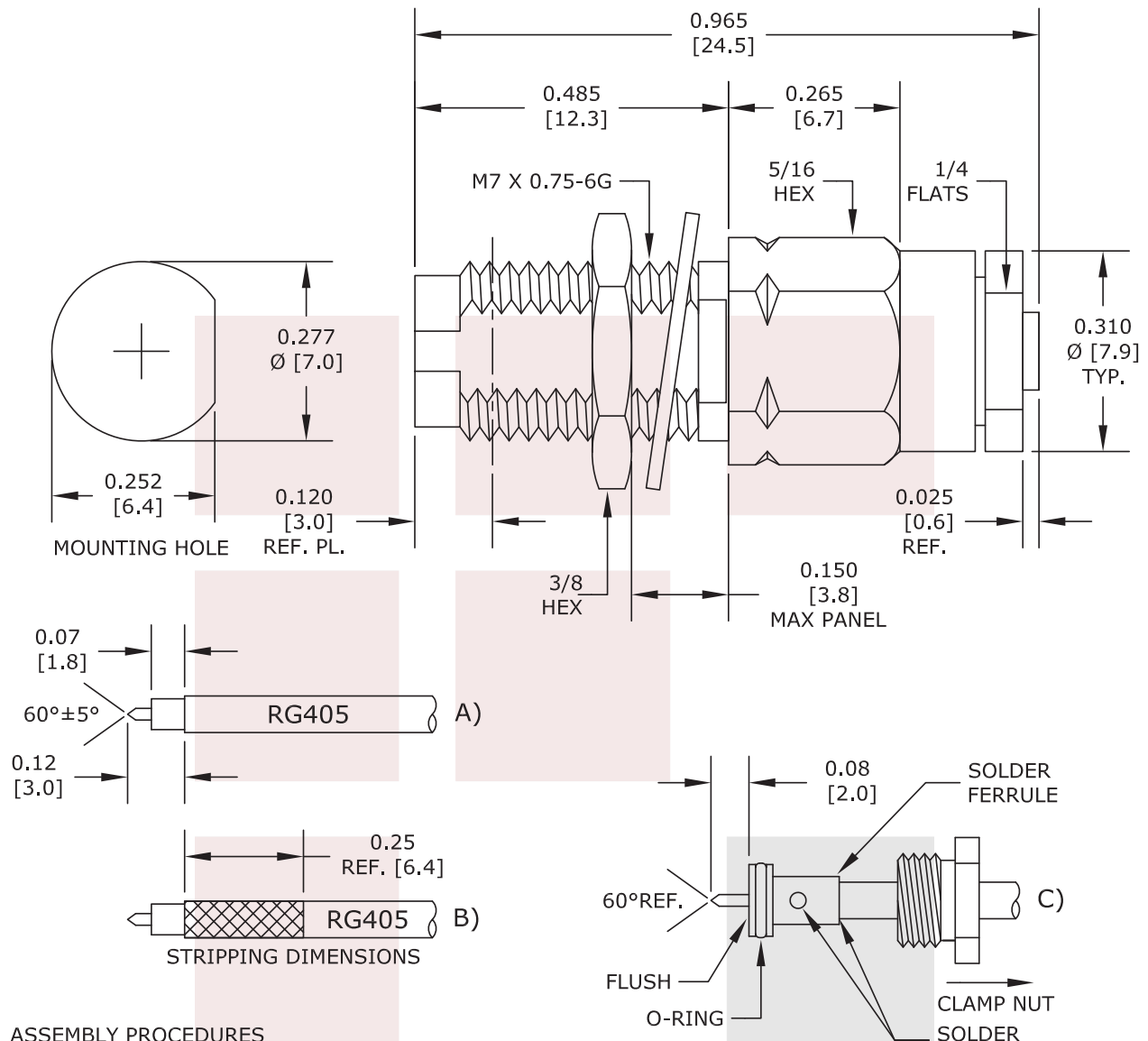
2.4mm Female Bulkhead Precision Connector Clamp/Solder Attachment For RG405 Cable , .252 inch D Hole from Fairview Microwave is in-stock and available to ship same-day. All of our RF/microwave products are available off-the-shelf from our ISO 9001:2008 certified facilities in Allen, Texas. Fairview Microwave is RF on-demand.

For additional information on this product, please click the following link: [2.4mm Female Bulkhead Precision Connector Clamp/Solder Attachment For RG405 Cable , .252 inch D Hole SC5860](#)

URL: <http://www.fairviewmicrowave.com/2.4mm-female-standard-rg405-connector-sc5860-p.aspx>

The information contained in this document is accurate to the best of our knowledge and representative of the part described herein. It may be necessary to make modifications to the part and/or the documentation of the part, in order to implement improvements. Fairview Microwave reserves the right to make such changes as required. Unless otherwise stated, all specifications are nominal. Fairview Microwave does not make any representation or warranty regarding the suitability of the part described herein for any particular purpose, and Fairview Microwave does not assume any liability arising out of the use of any part or documentation.





ASSEMBLY PROCEDURES

1. STRIP CABLE AS SHOWN IN (A). DO NOT NICK DIELECTRIC.
2. PRE-TIN CABLE JACKET TO APPROXIMATE DIMENSION AS SHOWN IN (B).
3. INSERT CABLE THRU ADAPTER UNTIL IT BOTTOMS OUT. SOLDER OUTER CONDUCTOR TO ADAPTER & TRIM DIELECTRIC AS SHOWN IN (C).
4. SCREW ASSEMBLY INTO BODY & TIGHTEN NUT.

FAIRVIEW MICROWAVE INC. ALLEN, TX 75013 WWW.FAIRVIEWMICROWAVE.COM		NOTES: 1. UNLESS OTHERWISE SPECIFIED ALL DIMENSIONS ARE NOMINAL. 2. ALL SPECIFICATIONS ARE SUBJECT TO CHANGE WITHOUT NOTICE AT ANY TIME. 3. DIMENSIONS ARE IN INCHES [mm].			
TITLE 2.4mm Female Bulkhead Precision Connector Clamp/ Solder Attachment For RG405 Cable , .252 inch D Hole		DWG NO SC5860		CAGE CODE 3FKR5	
CAD FILE	080814	SHEET	SCALE	N/A	SIZE A 150