

## 20 dBi WR-28 Standard Gain Horn Radome Cover

FMWGCOV028-20 is a radome cover for 20 dBi WR-28 Standard Gain Horn antenna. This waveguide antenna radome cover is made from high strength, thermally stable Polymethacrylimide (PMI). PMI offers a low Relative Permittivity (Dielectric Constant) at the high frequency ranges seen with microwave and millimeter wave components. This allows for minimal signal loss or attenuation over other materials.

Increase your system capabilities with our PMI radome covers, designed to enhance the durability and longevity of standard gain horn antennas. Shielding against environmental elements, our radome covers ensure consistent signal integrity in any conditions. FMWGCOV028-20 has internal dimensions of 1.5 in by 1.2 in and will fit 20 dBi WR-28 standard gain horns. Fairview Microwave offers a wide selection of high performance waveguide components available in stock and same-day shipping to customers worldwide.

### Mechanical Specifications

Body Material	Polymethacrylimide (PMI)
Length	1.624 in [41.25 mm]
Width	1.27 in [32.26 mm]
Height	0.217 in [5.51 mm]
Weight	0.04 lbs [18.14 g]



### Features:

- 20 dBi WR-28 Waveguide Standard Gain Horn
- Polymethacrylimide
- Low Relative Permittivity (Dielectric Constant)
- Minimal reflection or attenuation of signal

### Mechanical Performance

Typical Density (kg/m <sup>3</sup> )	Compressive Strength (MPa)	Compression Modulus (MPa)	Tensile Strength (MPa)	Tensile Modulus (MPa)	Fracture Growth Rate(%)	Bending Strength (MPa)	Bending Modulus (MPa)	Deflection (MPa)
200	8.5	317	7.5	410	2.4	13	449	22
Standard Test	GB/T 8813-2008		GB/T9641-1988			GB/T 8812.2-2007		

### Electrical Performance

Antenna Radome Material	Frequency							Tolerance
	2	2.5	2.8	5	10	26	26.5	
$\epsilon_r$ (Relative Permittivity)	1.08	1.09	/	1.14	1.14	1.14	1.12	$\pm 0.01$

#### Remarks:

1. Test method: GB/T - 5597 - 1999 "Test Method for Microwave Complex Permittivity of Solid Dielectric".
2. Sample size: diameter 51mm, thickness 5mm.
3. Sampling rate and data processing: 5 samples were tested for each material, each sample was tested on both sides, and a total of 80 samples were obtained for each material. data points, and take the average to obtain the final data.

Fairview Microwave  
 301 Leora Ln., Suite 100  
 Lewisville, TX 75056  
 Tel: 1-800-715-4396 / (972) 649-6678  
 Fax: (972) 649-6689  
[www.fairviewmicrowave.com](http://www.fairviewmicrowave.com)  
[sales@fairviewmicrowave.com](mailto:sales@fairviewmicrowave.com)

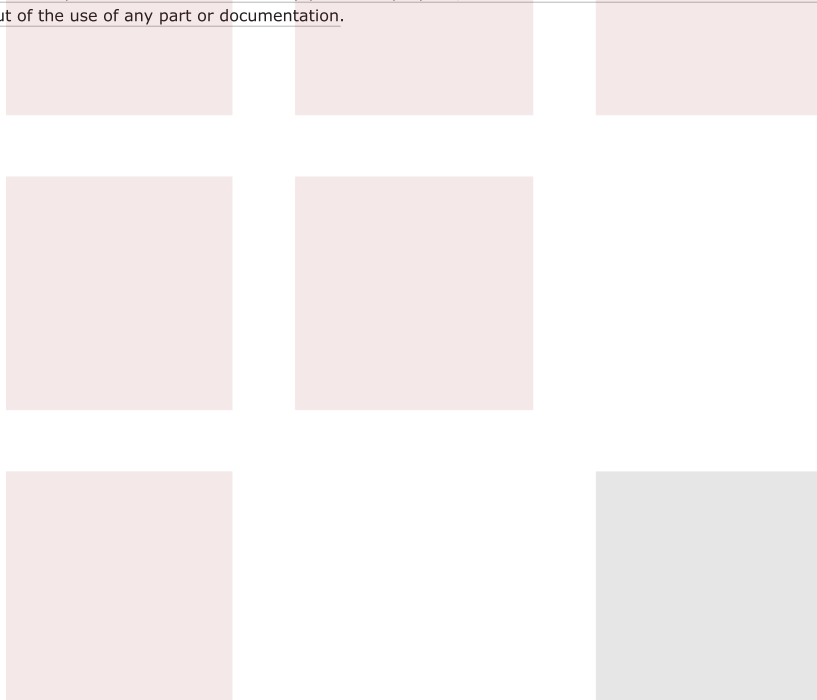
**Compliance Certifications** (see [product page](#) for current document)

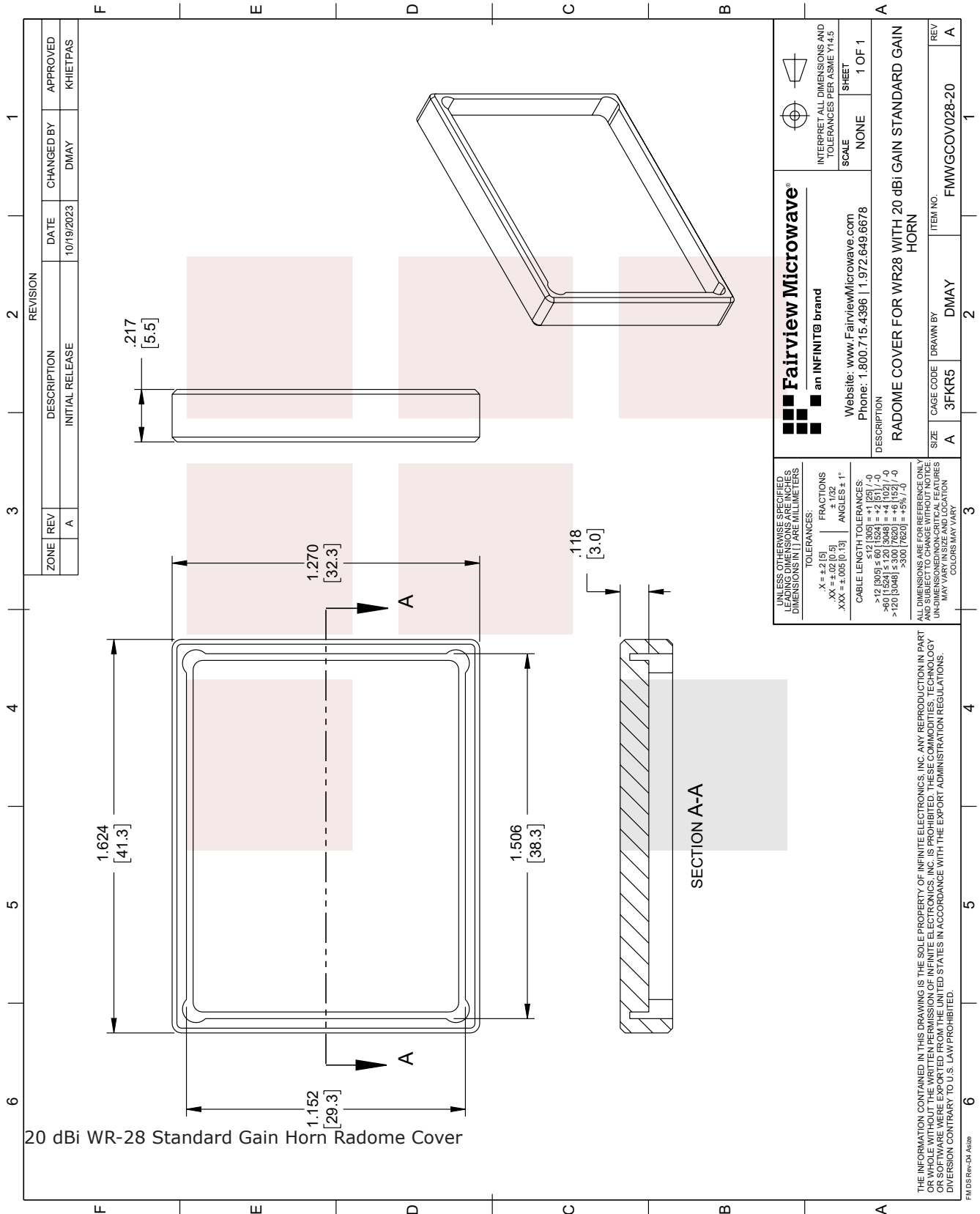
20 dBi WR-28 Standard Gain Horn Radome Cover from Fairview Microwave is in-stock and available to ship same-day. All of our RF/microwave products are available off-the-shelf from our ISO 9001:2008 certified facilities in Lewisville, Texas. Fairview Microwave is RF on-demand.

For additional information on this product, please click the following link: [20 dBi WR-28 Standard Gain Horn Radome Cover FMWGCOV028-20](#)

URL: <https://www.fairviewmicrowave.com/20-dbi-wr-28-standard-gain-horn-radome-cover-fmwgcov028-20-p.aspx>

The information contained in this document is accurate to the best of our knowledge and representative of the part described herein. It may be necessary to make modifications to the part and/or the documentation of the part, in order to implement improvements. Fairview Microwave reserves the right to make such changes as required. Unless otherwise stated, all specifications are nominal. Fairview Microwave does not make any representation or warranty regarding the suitability of the part described herein for any particular purpose, and Fairview Microwave does not assume any liability arising out of the use of any part or documentation.





ZONE		REV	DESCRIPTION	DATE	CHANGED BY	APPROVED
A		A	INITIAL RELEASE	10/19/2023	DMAY	KHIETPAS

REVISION	DESCRIPTION	DATE	CHANGED BY	APPROVED
1				
2				
3				
4				
5				
6				

<p>Fairview Microwave® an INFINIT® brand</p> <p>Website: <a href="http://www.FairviewMicrowave.com">www.FairviewMicrowave.com</a> Phone: 1.800.715.4396   1.972.649.6678</p>		<p>INTERPRET ALL DIMENSIONS AND TOLERANCES PER ASME Y14.5</p> <p>SCALE: NONE SHEET: 1 OF 1</p>		
<p>UNLESS OTHERWISE SPECIFIED, LEADING DIMENSIONS ARE INCHES AND DIMENSIONS IN [ ] ARE MILLIMETERS.</p> <p>TOLERANCES:          .X = ±.2 [5]     FRACTIONS ± 1/32          .XX = ±.02 [0.5]     ANGLES ± 1°          .XXX = ±.005 [0.13]</p> <p>CABLE LENGTH TOLERANCES:          ≤ 12 [305] = ±.1 [25] / -0          ≤ 60 [1524] = ±.2 [5.1] / -0          ≤ 90 [2286] = ±.3 [7.62] / -0          ≤ 120 [3048] = ±.300 [7620] = ±.6 [152] / -0          &gt; 300 [7620] = ±.5% / -0</p>				
<p>ALL DIMENSIONS ARE FOR REFERENCE ONLY AND SUBJECT TO CHANGE WITHOUT NOTICE. UN-DIMENSIONED CRITICAL FEATURES MAY VARY. COLORS MAY VARY.</p>				
DESCRIPTION	SIZE	CAGE CODE	DRAWN BY	ITEM NO.
RADOME COVER FOR WR28 WITH 20 dBi GAIN STANDARD GAIN HORN	A	3FKR5	DMAY	FMWGC0V028-20
REV	A			