

WR-430 CPR-430F Flange to SMA Female Waveguide to Coax Adapter Operating from 1.7 GHz to 2.6 GHz



FMWCA9835

Features

- 1.7 to 2.6 GHz Frequency Range
- WR-430 Waveguide Interface
- CPR-430F Flange
- SMA Female RF Interface
- Right Angle

Applications

- Test Benches
- Radar
- Satellite
- Microwave Radio Systems
- Military and Space
- Communication Systems

Description

The FMWCA9835 is a waveguide to coaxial adapter operating in the L-S band with a 1.7 to 2.6 GHz frequency range. This adapter offers a WR-430 waveguide interface size coupled with a precision tolerance CPR-430F flange. The FMWCA9835 is constructed of aluminum to ensure durability and repeatable RF performance. The SMA Female connector mates with commercially available 2.92mm and 3.5mm connectors. The package is REACH and RoHS compliant.

Configuration

Waveguide Size	WR-430
Flange	CPR-430F
RF Connector	SMA Female
Impedance	50 Ohms
Body Geometry	Right Angle

Electrical Specifications

Description	Minimum	Typical	Maximum	Units
Frequency Range	1.7		2.6	GHz
VSWR			1.3:1	
Input Power (Peak)			150	Watts

Mechanical Specifications

Size	
Length	3.5 in [88.9 mm]
Width	6.34 in [161.04 mm]
Height	4.19 in [106.43 mm]
Weight	2.5 lbs [1.13 kg]

RF Connector

Connector Type	SMA Female
Body Material and Plating	Stainless Steel

Waveguide Interface

Waveguide Type	WR-430
Flange Type	CPR-430F
Body Material and Plating	Aluminum

WR-430 CPR-430F Flange to SMA Female Waveguide to Coax Adapter Operating from 1.7 GHz to 2.6 GHz



FMWCA9835

Environmental Specifications

Temperature

Operating Range -40 to +85 deg C

Compliance Certifications (see [product page](#) for current document)

Plotted and Other Data

Notes:

- Values at +25 °C, sea level unless stated otherwise

Typical Performance Data

WR-430 CPR-430F Flange to SMA Female Waveguide to Coax Adapter Operating from 1.7 GHz to 2.6 GHz from Fairview Microwave is in-stock and available to ship same-day. All of our RF/microwave products are available off-the-shelf from our ISO 9001:2008 certified facilities in Lewisville, Texas. Fairview Microwave is RF on-demand.

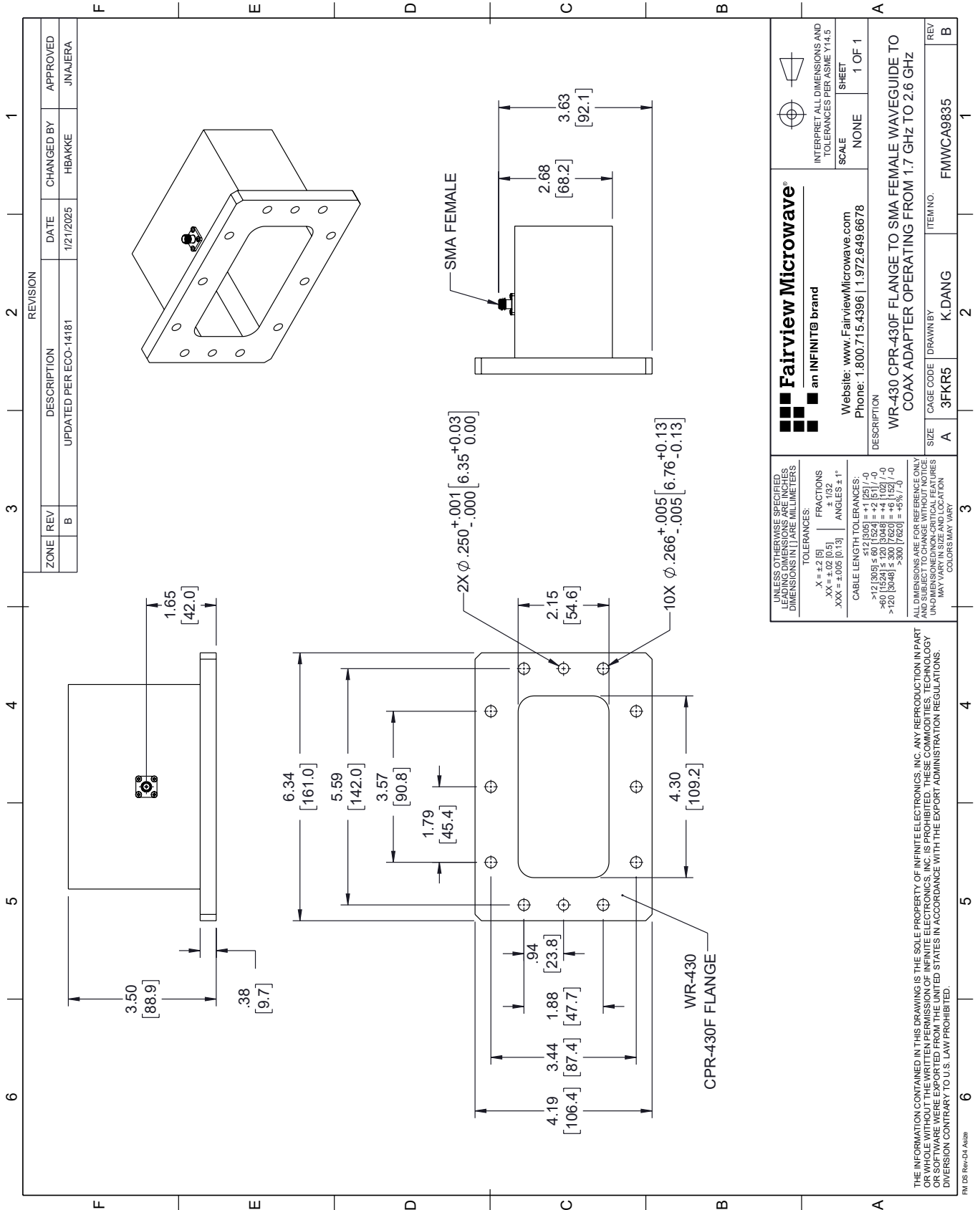
For additional information on this product, please click the following link: [WR-430 CPR-430F Flange to SMA Female Waveguide to Coax Adapter Operating from 1.7 GHz to 2.6 GHz FMWCA9835](#)


URL: <https://www.fairviewmicrowave.com/wr430-sma-female-waveguide-coax-adapter-cpr-430f-fmwca9835-p.aspx>

The information contained within this document is accurate to the best of our knowledge and representative of the part described herein. It may be necessary to make modifications to the part and/or the documentation of the part in order to implement improvements. Fairview Microwave reserves the right to make such changes as required. Unless otherwise stated, all specifications are nominal. Fairview Microwave does not make any representation or warranty regarding the suitability of the part described herein for any particular purpose, and Fairview Microwave does not assume liability arising out of the use of any part or document.

FMWCA9835 CAD Drawing

WR-430 CPR-430F Flange to SMA Female Waveguide to Coax Adapter Operating from 1.7 GHz to 2.6 GHz



 Website: www.FairviewMicrowave.com Phone: 1.800.715.4396 1.972.649.6678		INTERPRET ALL DIMENSIONS AND TOLERANCES PER ASME Y14.5 SCALE: NONE SHEET: 1 OF 1
DESCRIPTION WR-430 CPR-430F FLANGE TO SMA FEMALE WAVEGUIDE TO COAX ADAPTER OPERATING FROM 1.7 GHz TO 2.6 GHz		REV B
SIZE A	CAGE CODE 3FKR5	DRAWN BY K.DANG
ITEM NO. FMWCA9835		

UNLESS OTHERWISE SPECIFIED, LEADING DIMENSIONS ARE IN INCHES. DIMENSIONS IN [] ARE MILLIMETERS.

TOLERANCES:
 .X = ±.2 (5)
 .XX = ±.02 (0.5)
 .XXX = ±.005 (0.13)
 FRACTIONS ± 1/32
 ANGLES ± 1°

CABLE LENGTH TOLERANCES:
 ≤ 12 [305] ≤ .60 [15.24] = +.1 [2.5] / -0
 > 12 [305] ≤ 60 [1524] = +.2 [5.1] / -0
 > 60 [1524] ≤ 120 [3048] = +.4 [10.2] / -0
 > 120 [3048] ≤ 300 [7620] = +.8 [20.3] / -0
 > 300 [7620] = +.8 [20.3] / -0

ALL DIMENSIONS ARE FOR REFERENCE ONLY. UNDIMENSIONED/NON-CRITICAL FEATURES MAY VARY IN SIZE AND LOCATION. COLORS MAY VARY.

THE INFORMATION CONTAINED IN THIS DRAWING IS THE SOLE PROPERTY OF INFINITE ELECTRONICS, INC. ANY REPRODUCTION IN PART OR WHOLE WITHOUT THE WRITTEN PERMISSION OF INFINITE ELECTRONICS, INC. IS PROHIBITED. THESE COMMODITIES, TECHNOLOGY OR SOFTWARE WERE EXPORTED FROM THE UNITED STATES IN ACCORDANCE WITH THE EXPORT ADMINISTRATION REGULATIONS. DIVISION CONTRARY TO U.S. LAW PROHIBITED.

FM DS Rev-D4 A428