

WR-112 Waveguide Fixed Attenuator,
30 dB, Operating from 6.57 GHz to 9.99 GHz, UG-51/U Square Cover Flange, Rated to 2 Watt



FMWAT1024-30

Features

- WR-112 Waveguide
- Typical Attenuation 30 dB
- Frequency Range 6.57 GHz to 9.99 GHz
- UG-51/U Cover Flanges
- VSWR 1.25:1 Max
- 2 Watts (CW) Max Power Handling

Applications

- Instrumentation
- Research and Development
- System Calibration
- Test Benches

Description

FMWAT1024-30 is a WR-112 waveguide attenuator with 30 dB attenuation, operating in the 6.57 to 9.99 GHz frequency range. With typical VSWR performance of 1.25:1, the attenuator uses an UG-51/U cover flange that is made of Silver plated brass. Fairview Microwave offers standard mid-band tuned Waveguide fixed attenuators with attenuation values from 3 to 30 dB. Waveguide fixed attenuators are part of Fairview Microwave's comprehensive waveguide product offerings which are available in stock and ready for same-day shipment.

Electrical Specifications

Description	Minimum	Typical	Maximum	Units
Frequency Range	6.57		9.99	GHz
Nominal Attenuation		30		dB
Attenuation		0.7		dB
VSWR			1.25:1	
Input Power (CW)			2	Watts

Mechanical Specifications

Size

Length	4.72 in [119.89 mm]
Width	1.88 in [47.75 mm]
Height	1.88 in [47.75 mm]
Weight	0.73 lbs [331.12 g]
Finish	Grey Paint

Description	Flange 1	Waveguide	Flange 2
Interface	UG-51/U	WR-112	UG-51/U
Material	Brass Copper	Brass Copper	Brass Copper
Plating	Silver	Silver	Silver

Environmental Specifications

Temperature

Operating Range	-40 to +70 deg C
Storage Range	-55 to +85 deg C

WR-112 Waveguide Fixed Attenuator,
30 dB, Operating from 6.57 GHz to 9.99 GHz, UG-
51/U Square Cover Flange, Rated to 2 Watt



FMWAT1024-30

Compliance Certifications (see [product page](#) for current document)

Plotted and Other Data

Notes:

WR-112 Waveguide Fixed Attenuator, 30 dB, Operating from 6.57 GHz to 9.99 GHz, UG-51/U Square Cover Flange, Rated to 2 Watt from Fairview Microwave is in-stock and available to ship same-day. All of our RF/microwave products are available off-the-shelf from our ISO 9001:2008 certified facilities in Lewisville, Texas. Fairview Microwave is RF on-demand.

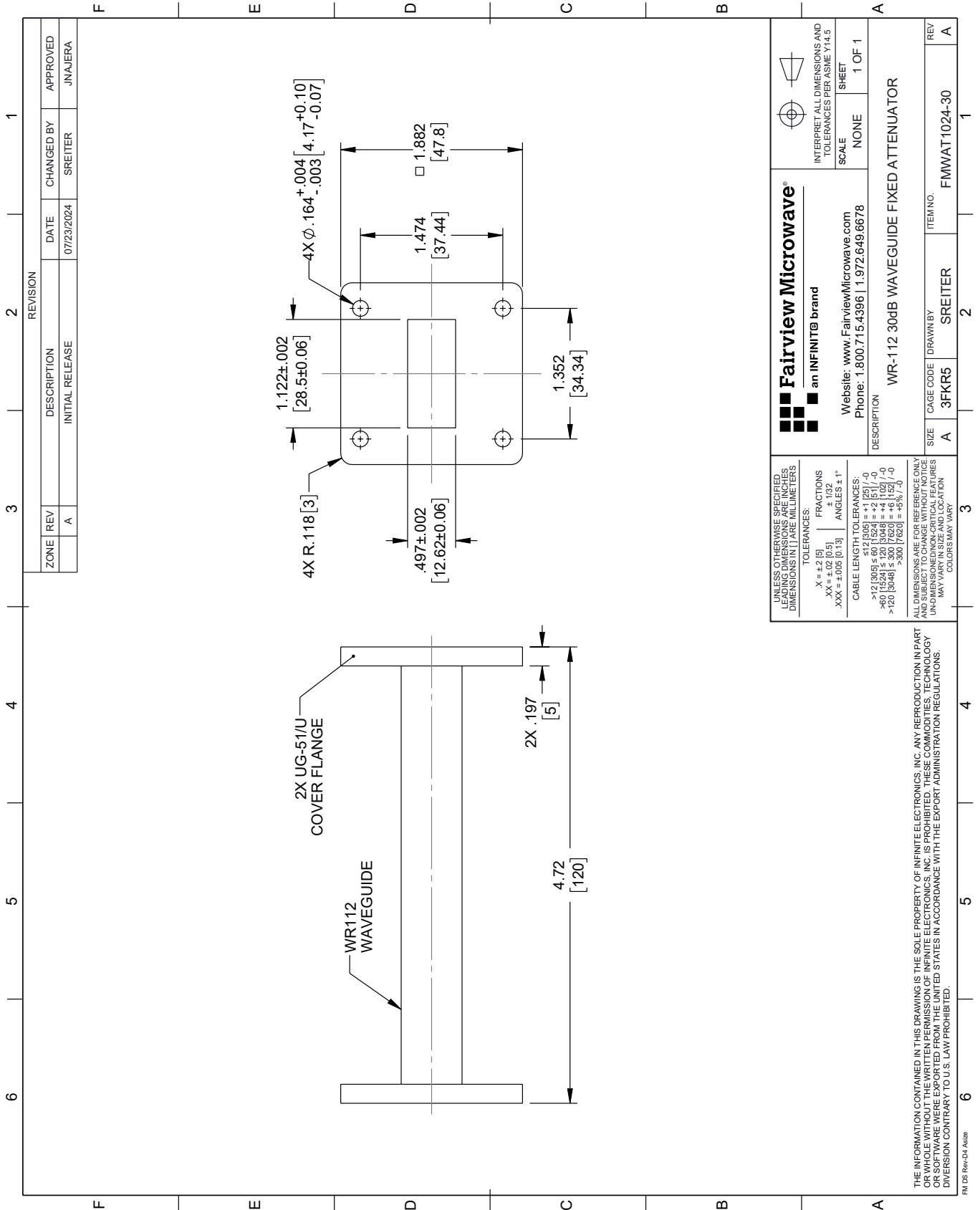
For additional information on this product, please click the following link: [WR-112 Waveguide Fixed Attenuator, 30 dB, Operating from 6.57 GHz to 9.99 GHz, UG-51/U Square Cover Flange, Rated to 2 Watt FMWAT1024-30](#)

URL: <https://www.fairviewmicrowave.com/wr-112-waveguide-attenuator-fixed-30-db-operating-from-6.57-to-9.99-ghz-ug-51-u-square-cover-flange-fmwat1024-30-p.aspx>

The information contained within this document is accurate to the best of our knowledge and representative of the part described herein. It may be necessary to make modifications to the part and/or the documentation of the part in order to implement improvements. Fairview Microwave reserves the right to make such changes as required. Unless otherwise stated, all specifications are nominal. Fairview Microwave does not make any representation or warranty regarding the suitability of the part described herein for any particular purpose, and Fairview Microwave does not assume liability arising out of the use of any part or document.

FMWAT1024-30 CAD Drawing

WR-112 Waveguide Fixed Attenuator, 30 dB, Operating from 6.57 GHz to 9.99 GHz, UG-51/U Square Cover Flange, Rated to 2 Watt



REVISION		DATE	CHANGED BY	APPROVED	
ZONE	REV	DESCRIPTION	DATE	CHANGED BY	APPROVED
	A	INITIAL RELEASE	07/23/2024	SREITER	JNAJERA

 Fairview Microwave® an INFINIT® brand		Website: www.FairviewMicrowave.com Phone: 1.800.715.4396 1.972.649.6678	INTERPRET ALL DIMENSIONS AND TOLERANCES PER ASME Y14.5 SCALE: NONE SHEET: 1 OF 1
DESCRIPTION: WR-112 30dB WAVEGUIDE FIXED ATTENUATOR			
SIZE: A	CAGE CODE: 3FKR5	DRAWN BY: SREITER	ITEM NO.: FMWAT1024-30

UNLESS OTHERWISE SPECIFIED, LEADING DIMENSIONS ARE IN INCHES AND TRAILING DIMENSIONS ARE IN MILLIMETERS.

TOLERANCES:
 .X = ±.2 [5] FRACTIONS ± 1/32
 .XX = ±.02 [0.5] ANGLES ± 1°
 .XXX = ±.005 [0.13]

CABLE LENGTH TOLERANCES:
 ≤ 12 [305] ± .60 [15.24] = ±.2 [5] / -0
 > 12 [305] ≤ 60 [1524] = ±.4 [10.2] / -0
 > 60 [1524] ≤ 120 [3048] = ±.4 [10.2] / -0
 > 120 [3048] ≤ 300 [7620] = ±.6 [15.24] / -0

ALL DIMENSIONS ARE FOR REFERENCE ONLY. UNLESS OTHERWISE SPECIFIED, DIMENSIONS ARE IN INCHES AND TRAILING DIMENSIONS ARE IN MILLIMETERS. COLORS MAY VARY.

THE INFORMATION CONTAINED IN THIS DRAWING IS THE SOLE PROPERTY OF INFINITE ELECTRONICS, INC. ANY REPRODUCTION IN PART OR WHOLE WITHOUT THE WRITTEN PERMISSION OF INFINITE ELECTRONICS, INC. IS PROHIBITED. THESE COMMODITIES, TECHNOLOGY OR SOFTWARE ARE EXPORTED FROM THE UNITED STATES IN ACCORDANCE WITH THE EXPORT ADMINISTRATION REGULATIONS. DIVISION CONTRARY TO U.S. LAW PROHIBITED.

PM DS Rev-D4 Alt2