

WR-975 Waveguide Standard Gain Horn Antenna Operating From 760 MHz to 1150 MHz, 15 dBi Gain with N Type Female Connector

The FMWAN975-15NF standard horn antenna (also known as waveguide horn) from Fairview is part of our comprehensive selection of waveguide antennas. This WR-975 waveguide horn features an N Female coaxial connector and operates from 760 to 1150 MHz.

Our FMWAN975-15NF standard gain horn antenna has a nominal gain of 15 dBi with a typical input VSWR of 1.5:1. Fairview's waveguide horns are available in 10, 15, and 20 dBi models with varying frequency ranges to suit the application needs.

Waveguide antennas, such as the FMWAN975-15NF are used in a wide variety of applications due to the high-power handling capability, low loss, high directivity, and near constant electrical performance. Our WR-975 waveguide antennas with are part of over 40,000 RF, microwave, and millimeter wave components from Fairview available worldwide and Ship same day.

Configuration

Design	WR-975 Standard Gain Horn
Pattern	Directional
Polarization	Linear
RF Connector	N Female

Electrical Specifications

Description	Min	Typ	Max	Units
Frequency Range	0.76		1.15	GHz
Gain		15		dBi
VSWR			1.5:1	

Mechanical Specifications

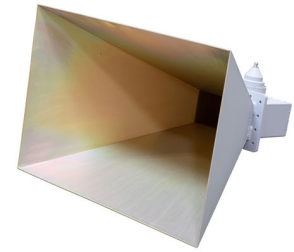
Size	
Length	32.3 in 820.42 mm
Width	33.5 in 850.9 mm
Height	22.9 in 581.66 mm
Weight	31.752 lbs 14.4 kg
RF Connector	N Female

Environmental Specifications

Compliance Certifications (see [product page](#) for current document)

Plotted and Other Data

Notes:



Features:

- 760 MHz to 1150 MHz
- Linearly Polarized
- 15 dBi Nominal Gain
- WR-975 with N Female coaxial connector
- Powder Coated Aluminum

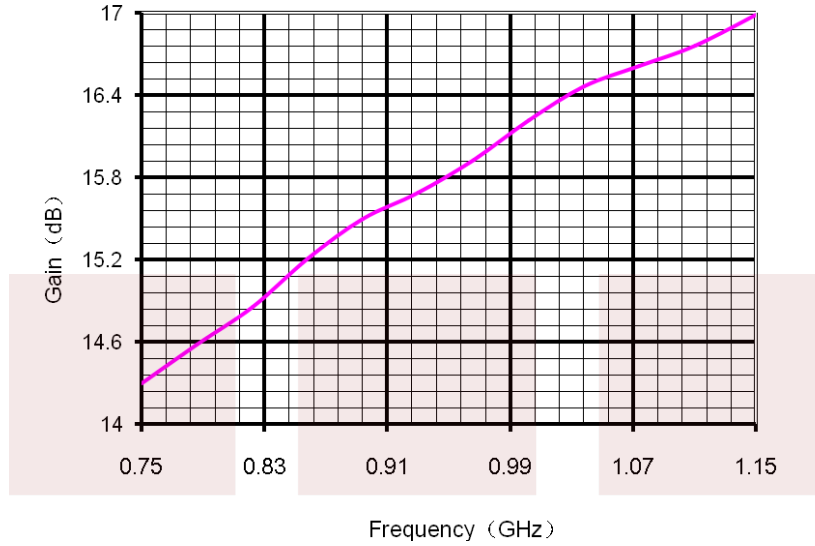
Applications:

- Antenna Measurements
- Wireless Communication
- Laboratory Use
- Microwave Testing
- Radome Testing
- EMC measurement
- Satellite Antenna Testing

Fairview Microwave
301 Leora Ln., Suite 100
Lewisville, TX 75056
Tel: 1-800-715-4396 / (972) 649-6678
Fax: (972) 649-6689
www.fairviewmicrowave.com
sales@fairviewmicrowave.com

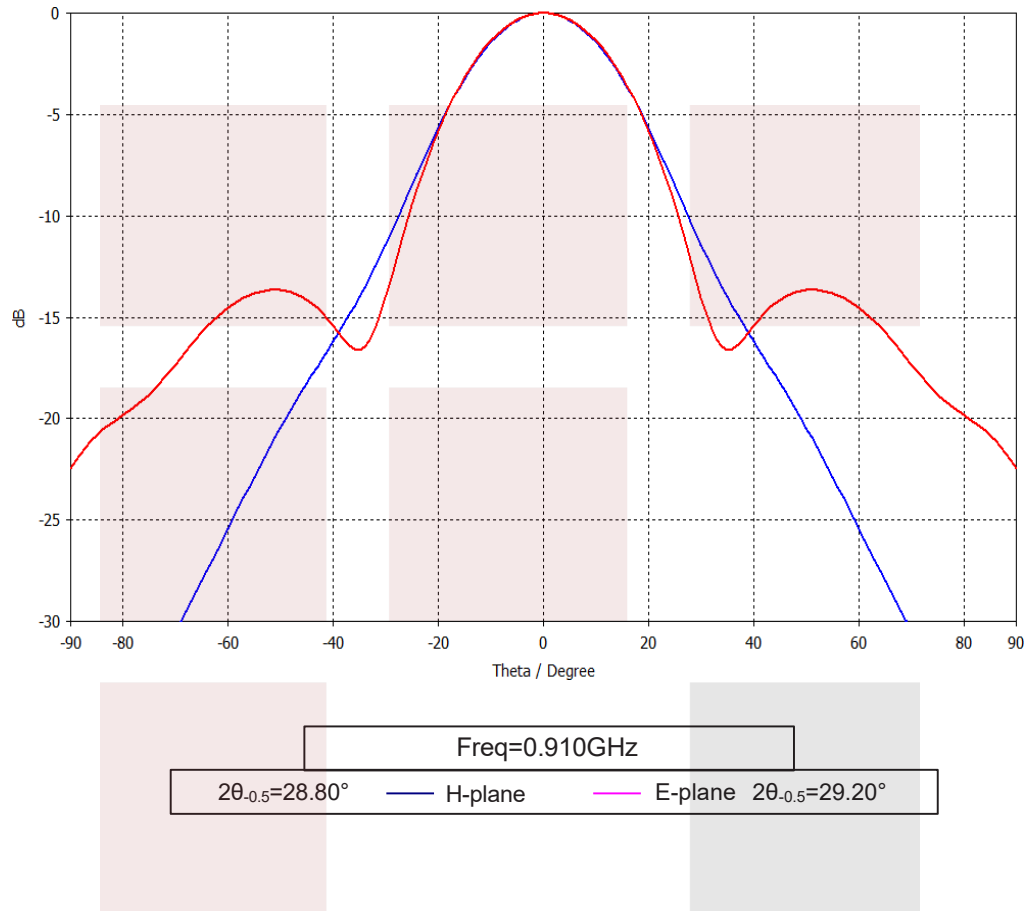
Typical Performance Data

Gain VS Frequency Curve:



Freq	Gain	Freq	Gain
0.75 GHz	14.30 dB	0.97 GHz	15.93 dB
0.79 GHz	14.58 dB	1.00 GHz	16.22 dB
0.82 GHz	14.86 dB	1.04 GHz	16.47 dB
0.86 GHz	15.21 dB	1.07 GHz	16.62 dB
0.89 GHz	15.50 dB	1.11 GHz	16.76 dB
0.93 GHz	15.69 dB	1.15 GHz	16.99 dB

Typical Pattern:



WR-975 Waveguide Standard Gain Horn Antenna Operating From 760 MHz to 1150 MHz, 15 dBi Gain with N Type Female Connector from Fairview Microwave is in-stock and available to ship same-day. All of our RF/microwave products are available off-the-shelf from our ISO 9001:2008 certified facilities in Lewisville, Texas. Fairview Microwave is RF on-demand.

For additional information on this product, please click the following link: [WR-975 Waveguide Standard Gain Horn Antenna Operating From 760 MHz to 1150 MHz, 15 dBi Gain with N Type Female Connector FMWAN975-15NF](#)

URL: <https://www.fairviewmicrowave.com/wr-975-waveguide-standard-gain-horn-antenna-operating-from-760-mhz-to-1150-mhz-15-dbi-gain-with-n-type-female-connector-fmwan975-15nf-p.aspx>

The information contained in this document is accurate to the best of our knowledge and representative of the part described herein. It may be necessary to make modifications to the part and/or the documentation of the part, in order to implement improvements. Fairview Microwave reserves the right to make such changes as required. Unless otherwise stated, all specifications are nominal. Fairview Microwave does not make any representation or warranty regarding the suitability of the part described herein for any particular purpose, and Fairview Microwave does not assume any liability arising out of the use of any part or documentation.



