

## WR-34 2 Way Waveguide Power Divider From 27 GHz to 31 GHz UG Square Cover Flange, Brass

Fairview Microwave carries a wide selection of waveguide power dividers to fit your needs. These components are essential in many systems, allowing the combination of multiple signals or splitting of a single signal into multiple signals with equal magnitude and phase. The FMW34DV001 is a 2-way waveguide power divider that operates from 27 to 31 GHz and can handle up to 4 Watts (CW) with 0.4 dB max insertion loss and 17 dB min isolation. The package uses WR-34 waveguide interface.

### Electrical Specifications

Number of Output Ports				2
Description	Min	Typ	Max	Units
Frequency Range	27		31	GHz
Input VSWR			1.25:1	
Output VSWR			1.25:1	
Insertion Loss			0.4	dB
Isolation	17			dB
Amplitude Balance			0.3	dB
Phase Balance			3	Degrees
Input Power (CW)			4	Watts
Input Power (Peak)			4	kWatts

### Mechanical Specifications

<b>Size</b>	
Length	1.42 in [36.07 mm]
Width	1.97 in [50.04 mm]
Height	1.5 in [38.1 mm]
Weight	0.19 lbs [86.18 g]
Housing Material and Plating	Copper, Gray
<b>Configuration</b>	
Input Waveguide Size	WR-34
Input Flange Type	UG Cover
Output Waveguide Size	WR-34
Output Flange Type	UG Cover

**Compliance Certifications** (see [product page](#) for current document)

### Plotted and Other Data

Notes:



### Features:

- 2-Way Waveguide Power Divider
- WR-34 Waveguide Interface
- 27 to 31 GHz Frequency Range
- Max Power 4 Watts (CW)
- Insertion Loss 0.4 dB max
- Isolation 17 dB min

### Applications:

- Test Benches
- Radar/Satellite
- Microwave Radio
- Attenuation Measurements
- Power Measurements

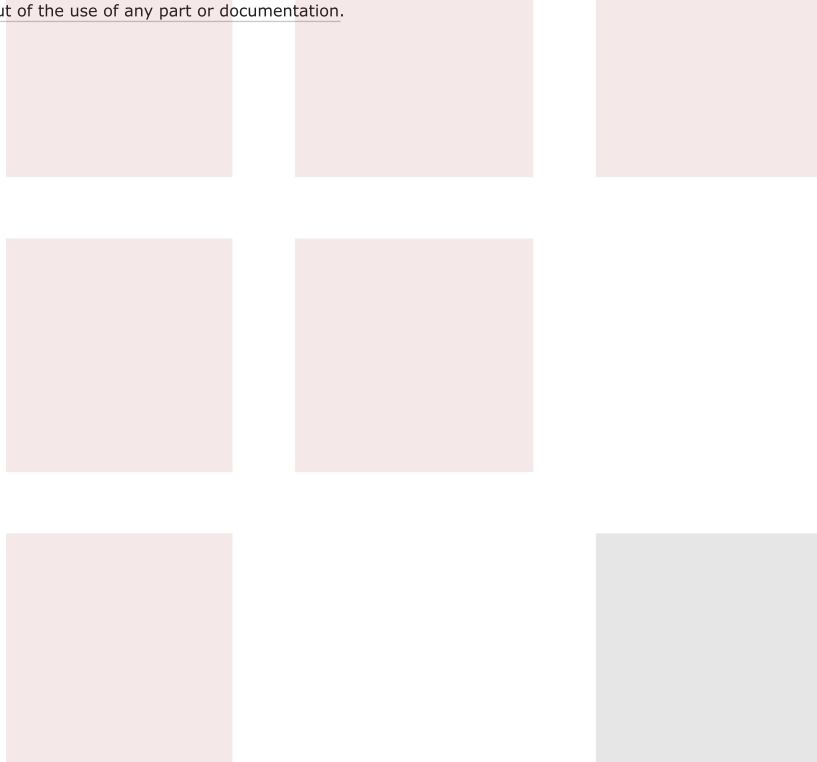
Fairview Microwave  
 301 Leora Ln., Suite 100  
 Lewisville, TX 75056  
 Tel: 1-800-715-4396 / (972) 649-6678  
 Fax: (972) 649-6689  
[www.fairviewmicrowave.com](http://www.fairviewmicrowave.com)  
[sales@fairviewmicrowave.com](mailto:sales@fairviewmicrowave.com)

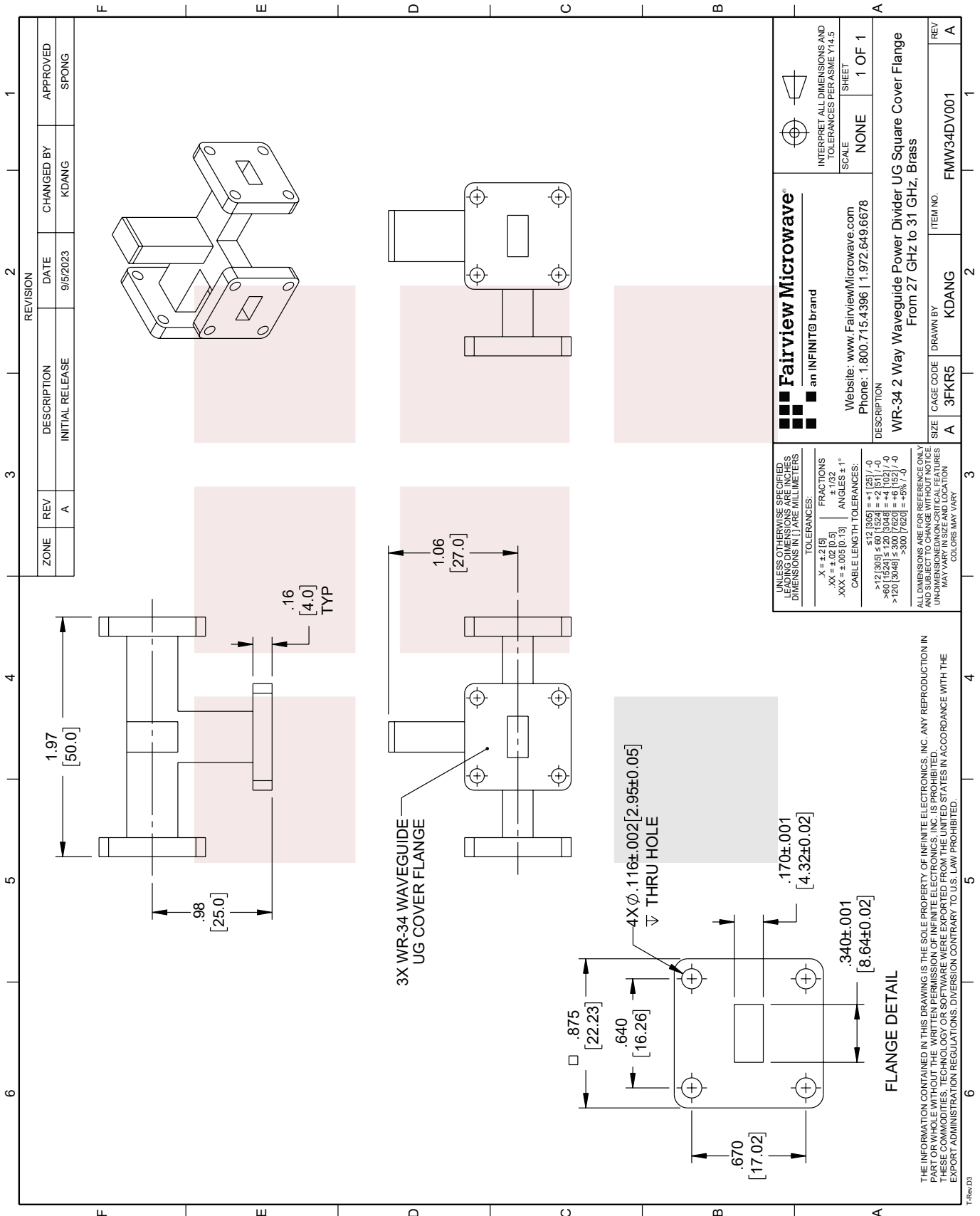
WR-34 2 Way Waveguide Power Divider From 27 GHz to 31 GHz UG Square Cover Flange, Brass from Fairview Microwave is in-stock and available to ship same-day. All of our RF/microwave products are available off-the-shelf from our ISO 9001:2008 certified facilities in Lewisville, Texas. Fairview Microwave is RF on-demand.

For additional information on this product, please click the following link: [WR-34 2 Way Waveguide Power Divider From 27 GHz to 31 GHz UG Square Cover Flange, Brass FMW34DV001](#)

URL: <https://www.fairviewmicrowave.com/undefined-url-for-pn-fmw34dv001-fmw34dv001-p.aspx>

The information contained in this document is accurate to the best of our knowledge and representative of the part described herein. It may be necessary to make modifications to the part and/or the documentation of the part, in order to implement improvements. Fairview Microwave reserves the right to make such changes as required. Unless otherwise stated, all specifications are nominal. Fairview Microwave does not make any representation or warranty regarding the suitability of the part described herein for any particular purpose, and Fairview Microwave does not assume any liability arising out of the use of any part or documentation.





ZONE		REVISION		DESCRIPTION		CHANGED BY		APPROVED	
	A			INITIAL RELEASE		KDANG		SPONG	
					DATE				
					9/15/2023				

**Fairview Microwave**  
an INFINIT<sup>®</sup> brand

Website: [www.FairviewMicrowave.com](http://www.FairviewMicrowave.com)  
Phone: 1.800.715.4396 | 1.972.649.6678

INTERPRET ALL DIMENSIONS AND TOLERANCES PER ASME Y14.5  
SCALE: NONE SHEET: 1 OF 1

DESCRIPTION:  
WR-34 2 Way Waveguide Power Divider UG Square Cover Flange  
From 27 GHz to 31 GHz, Brass

SIZE: A CAGE CODE: 3FKR5 DRAWN BY: KDANG ITEM NO.: FMW34DV001 REV: A

UNLESS OTHERWISE SPECIFIED, LEADING DIMENSIONS ARE IN INCHES, DIMENSIONS IN [ ] ARE MILLIMETERS.  
TOLERANCES:  
X = ±.2 [5] FRACTIONS ± 1/32  
XX = ±.02 [0.5] ANGLES ± 1°  
XXX = ±.005 [0.13] CABLE LENGTH TOLERANCES:  
≤.12 [3.05] ≤.60 [15.24] = +.02 [-0] / -0  
≤.01 [0.254] ≤.30 [7.62] = +.01 [-0] / -0  
>.12 [3.05] >.30 [7.62] = +.01 [-0] / -0  
>.30 [7.62] >.60 [15.24] = +.02 [-0] / -0  
COLORS MAY VARY

ALL DIMENSIONS ARE FOR REFERENCE ONLY AND SUBJECT TO CHANGE WITHOUT NOTICE. UNDIMENSIONED NON-CRITICAL FEATURES MAY VARY IN SIZE AND LOCATION.

THE INFORMATION CONTAINED IN THIS DRAWING IS THE SOLE PROPERTY OF INFINITE ELECTRONICS, INC. ANY REPRODUCTION IN PART OR WHOLE WITHOUT THE WRITTEN PERMISSION OF INFINITE ELECTRONICS, INC. IS PROHIBITED. THESE COMMODITIES, TECHNOLOGY OR SOFTWARE WERE EXPORTED FROM THE UNITED STATES IN ACCORDANCE WITH THE EXPORT ADMINISTRATION REGULATIONS. DIVERSION CONTRARY TO U.S. LAW PROHIBITED.