

WR-340 90 Degree Waveguide Right Hand Twist  
Using a UG Cover And Grooved Flanges And a  
2.17 GHz to 3.3 GHz Frequency Range



**FMW340TW001**

**Features**

- WR-340 Waveguide
- UG Cover and UG Grooved Flange
- 2.17 GHz to 3.3 GHz Frequency Ranges
- 90° Right Hand (Clockwise) Twist

**Applications**

- Instrumentation
- Precision Measurements
- Prototyping and Characterization
- Production Systems

**Description**

The FMW340TW001 is a 90 degree WR-340 waveguide twist that is part of a family of precision manufactured waveguide twists with UG Cover and UG Grooved flanges. The family includes right and left hand 45 degree twists as well as 90 degree twists. These twists are offered in the Ka through W waveguide bands (18 to 110 GHz).

**Electrical Specifications**

Description	Minimum	Typical	Maximum	Units
Frequency Range	2.17		3.3	GHz
VSWR		1.15:1		
Insertion Loss		0.2		dB

**Mechanical Specifications**

Waveguide Size	WR-340		
Section Length	15.75 in [400.05 mm]		
Description	Flange 1	Waveguide	Flange 2
Flange Type	UG Cover		UG Grooved
Interface	UG	WR-340	UG
Material	Aluminum	Aluminum	Aluminum
Plating	Chromate Conversion	Chromate Conversion	Chromate Conversion
Color	Gray	Gray	Gray

**Environmental Specifications**

<b>Temperature</b> Operating Range	-40 to 70 deg C
---------------------------------------	-----------------

**Compliance Certifications** (see [product page](#) for current document)

**Plotted and Other Data**

Notes:

## WR-340 90 Degree Waveguide Right Hand Twist Using a UG Cover And Grooved Flanges And a 2.17 GHz to 3.3 GHz Frequency Range



### FMW340TW001

---

#### Typical Performance Data

WR-340 90 Degree Waveguide Right Hand Twist Using a UG Cover And Grooved Flanges And a 2.17 GHz to 3.3 GHz Frequency Range from Fairview Microwave is in-stock and available to ship same-day. All of our RF/microwave products are available off-the-shelf from our ISO 9001:2008 certified facilities in Lewisville, Texas. Fairview Microwave is RF on-demand.

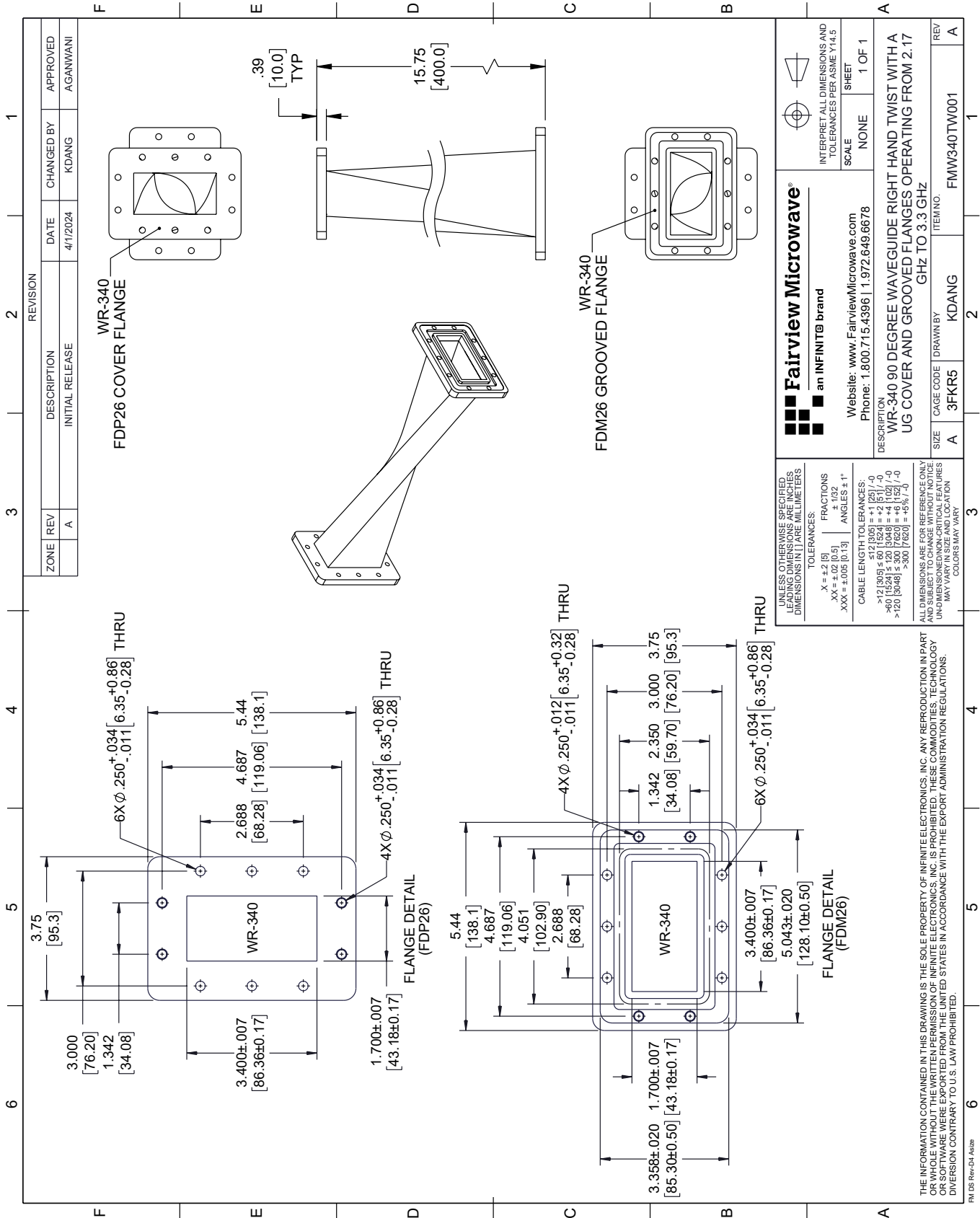
For additional information on this product, please click the following link: [WR-340 90 Degree Waveguide Right Hand Twist Using a UG Cover And Grooved Flanges And a 2.17 GHz to 3.3 GHz Frequency Range FMW340TW001](https://www.fairviewmicrowave.com/wr-340-90-waveguide-twist-ug-2.17-3.3-ghz-fmw340tw001-p.aspx)

URL: <https://www.fairviewmicrowave.com/wr-340-90-waveguide-twist-ug-2.17-3.3-ghz-fmw340tw001-p.aspx>

The information contained within this document is accurate to the best of our knowledge and representative of the part described herein. It may be necessary to make modifications to the part and/or the documentation of the part in order to implement improvements. Fairview Microwave reserves the right to make such changes as required. Unless otherwise stated, all specifications are nominal. Fairview Microwave does not make any representation or warranty regarding the suitability of the part described herein for any particular purpose, and Fairview Microwave does not assume liability arising out of the use of any part or document.

# FMW340TW001 CAD Drawing

WR-340 90 Degree Waveguide Right Hand Twist Using a UG Cover And Grooved Flanges And a 2.17 GHz to 3.3 GHz Frequency Range



ZONE	REV	DESCRIPTION	DATE	CHANGED BY	APPROVED
A	A	INITIAL RELEASE	4/11/2024	KDANG	AGANWANI

REVISION	DESCRIPTION
2	
3	
4	
5	
6	

**Fairview Microwave®**  
an INFINITI® brand

Website: [www.FairviewMicrowave.com](http://www.FairviewMicrowave.com)  
Phone: 1.800.715.4396 | 1.972.649.6678

INTERPRET ALL DIMENSIONS AND TOLERANCES PER ASME Y14.5

SCALE NONE SHEET 1 OF 1

DESCRIPTION: WR-340 90 DEGREE WAVEGUIDE RIGHT HAND TWIST WITH A UG COVER AND GROOVED FLANGES OPERATING FROM 2.17 GHZ TO 3.3 GHZ

SIZE A CAGE CODE 3FKR5 DRAWN BY KDANG ITEM NO. FMW340TW001

REV A

UNLESS OTHERWISE SPECIFIED, ALL DIMENSIONS ARE IN INCHES. DIMENSIONS IN [ ] ARE MILLIMETERS.

TOLERANCES:  
X = ±.2 (5) FRACTIONS ±.1 (3)  
XX = ±.02 (0.5) ANGLES ± 1°  
XXX = ±.005 (0.13)

CABLE LENGTH TOLERANCES:  
≤ 12 (305) ±.01 (25) / -0  
> 12 (305) ≤ 60 (1524) = +.02 (5) / -0  
> 60 (1524) ≤ 120 (3048) = +.04 (102) / -0  
> 120 (3048) ≤ 300 (7620) = +.08 (203) / -0

ALL DIMENSIONS ARE FOR REFERENCE ONLY. UNDIMENSIONED/UNCLEAR FEATURES MAY VARY IN SIZE AND LOCATION. COLORS MAY VARY.

THE INFORMATION CONTAINED IN THIS DRAWING IS THE SOLE PROPERTY OF INFINITE ELECTRONICS, INC. ANY REPRODUCTION IN PART OR WHOLE WITHOUT THE WRITTEN PERMISSION OF INFINITE ELECTRONICS, INC. IS PROHIBITED. THESE COMMODITIES, TECHNOLOGY OR SOFTWARE WERE EXPORTED FROM THE UNITED STATES IN ACCORDANCE WITH THE EXPORT ADMINISTRATION REGULATIONS. DIVISION CONTRARY TO U.S. LAW PROHIBITED.

FM DS Rev-D4 Alt26