

WR-22 2 Way Waveguide Power Divider From 36.7 GHz to 40 GHz UG Round Cover Flange, Brass

Fairview Microwave carries a wide selection of waveguide power dividers to fit your needs. These components are essential in many systems, allowing the combination of multiple signals or splitting of a single signal into multiple signals with equal magnitude and phase. The FMW22DV001 is a 2-way waveguide power divider that operates from 36.7 to 40 GHz and can handle up to 2 Watts (CW) with 0.4 dB max insertion loss and 17 dB min isolation. The package uses WR-22 waveguide interface.

Electrical Specifications

| Number of Output Ports | | 2 | | |
|------------------------|------|-----|-------|---------|
| Description | Min | Typ | Max | Units |
| Frequency Range | 36.7 | | 40 | GHz |
| Input VSWR | | | 1.2:1 | |
| Output VSWR | | | 1.3:1 | |
| Insertion Loss | | | 0.4 | dB |
| Isolation | 17 | | | dB |
| Amplitude Balance | | | 0.3 | dB |
| Phase Balance | | | 3 | Degrees |
| Input Power (CW) | | | 2 | Watts |
| Input Power (Peak) | | | 1 | kWatts |

Mechanical Specifications

| | |
|------------------------------|---------------------|
| Size | |
| Length | 1.55 in [39.37 mm] |
| Width | 1.97 in [50.04 mm] |
| Height | 1.67 in [42.42 mm] |
| Weight | 1.08 lbs [489.88 g] |
| Housing Material and Plating | Copper, Gold |
| Configuration | |
| Input Waveguide Size | WR-22 |
| Input Flange Designation | FUGP400 |
| Input Flange Type | UG Cover |
| Output Waveguide Size | WR-22 |
| Output Flange Type | UG Cover |

Compliance Certifications (see [product page](#) for current document)

Plotted and Other Data

Notes:



Features:

- 2-Way Waveguide Power Divider
- WR-22 Waveguide Interface
- 36.7 to 40 GHz Frequency Range
- Max Power 2 Watts (CW)
- Insertion Loss 0.4 dB max
- Isolation 17 dB min

Applications:

- Test Benches
- Radar/Satellite
- Microwave Radio
- Attenuation Measurements
- Power Measurements

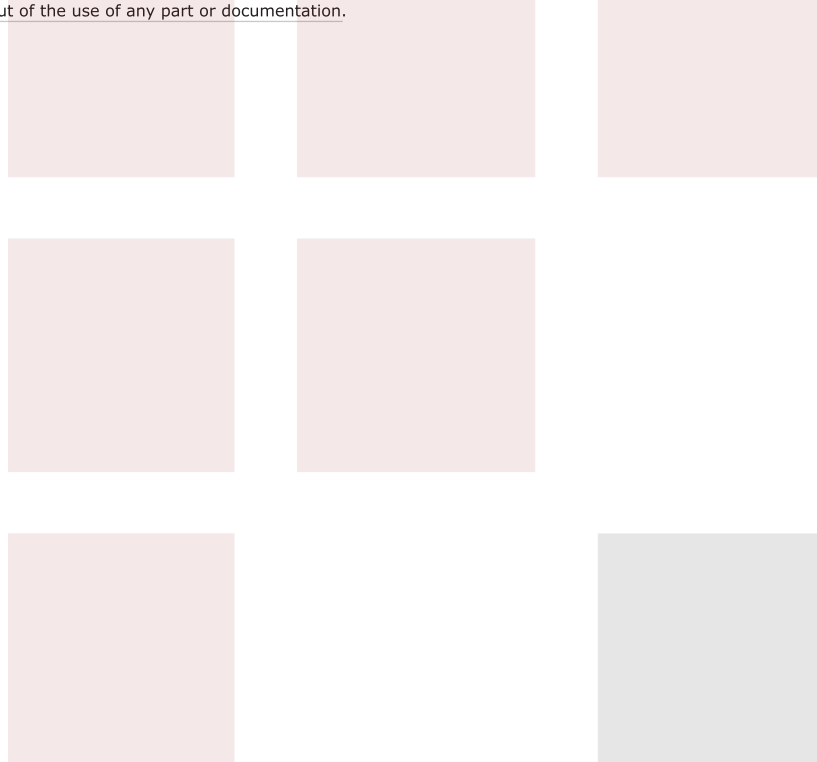
Fairview Microwave
 301 Leora Ln., Suite 100
 Lewisville, TX 75056
 Tel: 1-800-715-4396 / (972) 649-6678
 Fax: (972) 649-6689
www.fairviewmicrowave.com
sales@fairviewmicrowave.com

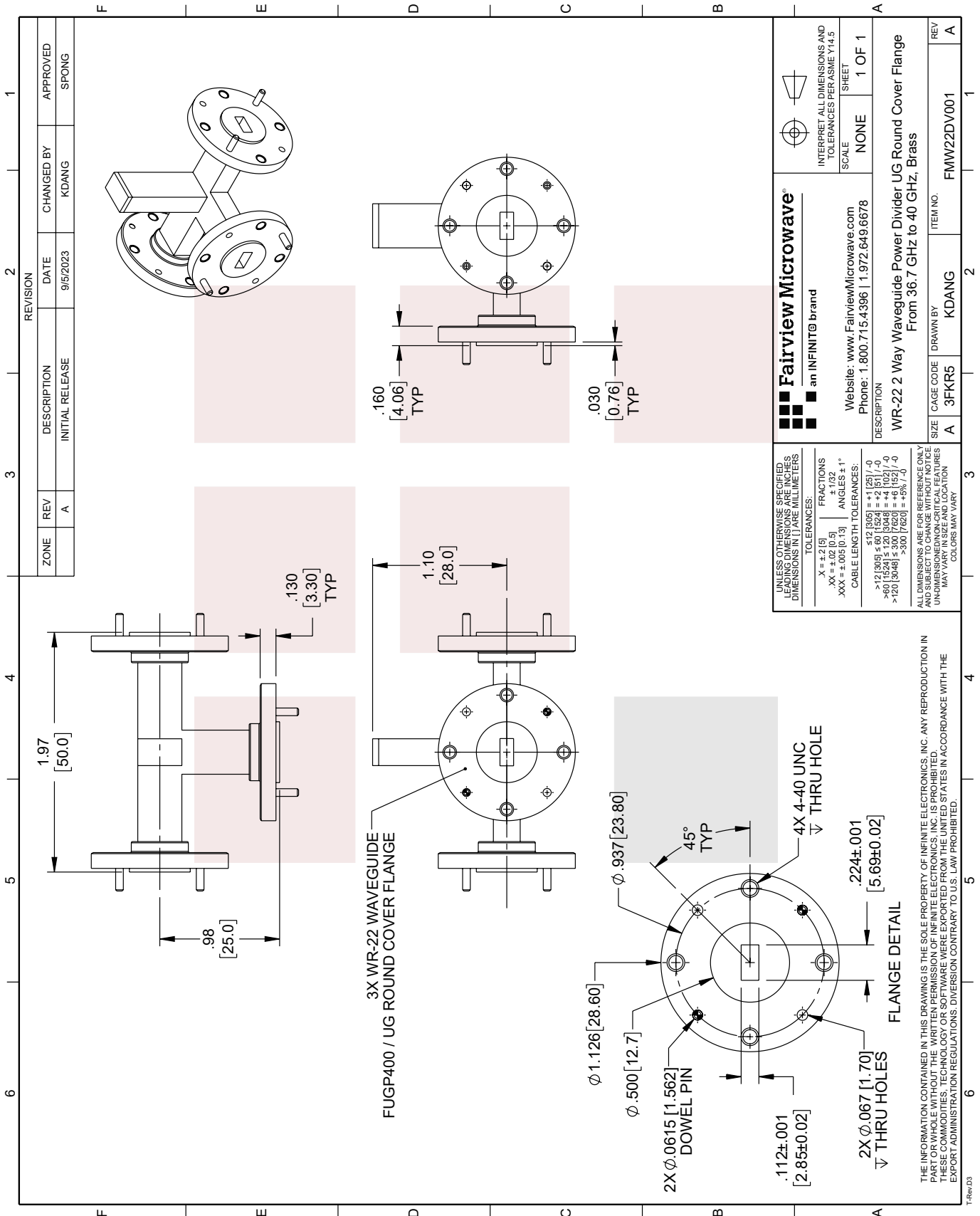
WR-22 2 Way Waveguide Power Divider From 36.7 GHz to 40 GHz UG Round Cover Flange, Brass from Fairview Microwave is in-stock and available to ship same-day. All of our RF/microwave products are available off-the-shelf from our ISO 9001:2008 certified facilities in Lewisville, Texas. Fairview Microwave is RF on-demand.

For additional information on this product, please click the following link: [WR-22 2 Way Waveguide Power Divider From 36.7 GHz to 40 GHz UG Round Cover Flange, Brass FMW22DV001](#)

URL: <https://www.fairviewmicrowave.com/undefined-url-for-pn-fmw22dv001-fmw22dv001-p.aspx>

The information contained in this document is accurate to the best of our knowledge and representative of the part described herein. It may be necessary to make modifications to the part and/or the documentation of the part, in order to implement improvements. Fairview Microwave reserves the right to make such changes as required. Unless otherwise stated, all specifications are nominal. Fairview Microwave does not make any representation or warranty regarding the suitability of the part described herein for any particular purpose, and Fairview Microwave does not assume any liability arising out of the use of any part or documentation.





| REVISION | | CHANGED BY | | APPROVED | |
|----------|-----|-----------------|----------|----------|-------|
| ZONE | REV | DESCRIPTION | DATE | INITIALS | DATE |
| | A | INITIAL RELEASE | 9/5/2023 | KDANG | SPONG |

| | | | |
|--|-----------|--|------------|
| <p>Fairview Microwave[®] an INFINIT[®] brand</p> <p>Website: www.FairviewMicrowave.com Phone: 1.800.715.4396 1.972.649.6678</p> | | <p>INTERPRET ALL DIMENSIONS AND TOLERANCES PER ASME Y14.5</p> <p>SCALE: NONE SHEET: 1 OF 1</p> | |
| <p>DESCRIPTION WR-22 2 Way Waveguide Power Divider UG Round Cover Flange From 36.7 GHz to 40 GHz, Brass</p> | | | |
| SIZE | CAGE CODE | DRAWN BY | ITEM NO. |
| A | 3FKR5 | KDANG | FMW22DV001 |
| REV | | | A |

UNLESS OTHERWISE SPECIFIED, LEADING DIMENSIONS ARE IN INCHES, DIMENSIONS IN [] ARE IN MILLIMETERS.

TOLERANCES:
 .X = ±.2 [5]
 .XX = ±.02 [0.5]
 .XXX = ±.005 [0.13]

FRACTIONS ± 1/32
 ANGLES ± 1°

CABLE LENGTH TOLERANCES:
 ≤ 12 [305] = +1 [25] / -0
 ≤ 60 [1524] = +2 [51] / -0
 ≤ 300 [7620] = +6 [152] / -0
 > 300 [7620] = +5% / -0

ALL DIMENSIONS ARE FOR REFERENCE ONLY AND SUBJECT TO CHANGE WITHOUT NOTICE. UNDIMENSIONED CRITICAL FEATURES MAY VARY IN SIZE AND LOCATION. COLORS MAY VARY.

THE INFORMATION CONTAINED IN THIS DRAWING IS THE SOLE PROPERTY OF INFINITE ELECTRONICS, INC. ANY REPRODUCTION IN PART OR WHOLE WITHOUT THE WRITTEN PERMISSION OF INFINITE ELECTRONICS, INC. IS PROHIBITED. THESE COMMODITIES, TECHNOLOGY OR SOFTWARE WERE EXPORTED FROM THE UNITED STATES IN ACCORDANCE WITH THE EXPORT ADMINISTRATION REGULATIONS. DIVERSION CONTRARY TO U.S. LAW PROHIBITED.