

WR-187 2 Way Waveguide Power Divider From 5.3 GHz to 5.7 GHz CPR187F Flange, Aluminum



FMW187DV001

Features

- 2-Way Waveguide Power Divider
- WR-187 Waveguide Interface
- 5.3 to 5.7 GHz Frequency Range
- Max Power 150 Watts (CW)
- Insertion Loss 0.3 dB max
- Isolation 18 dB min

Applications

- Test Benches
- Radar
- Satellite
- Microwave Radio
- Attenuation Measurements
- Power Measurements

Description

Fairview Microwave carries a wide selection of waveguide power dividers to fit your needs. These components are essential in many systems, allowing the combination of multiple signals or splitting of a single signal into multiple signals with equal magnitude and phase. The FMW187DV001 is a 2-way waveguide power divider that operates from 5.3 to 5.7 GHz and can handle up to 150 Watts (CW) with 0.3 dB max insertion loss and 18 dB min isolation. The package uses WR-187 waveguide interface.

Electrical Specifications

Number of Output Ports 2

Description	Min	Typ	Max	Units
Frequency Range	5.3		5.7	GHz
Input VSWR			1.25:1	
Output VSWR			1.3:1	
Insertion Loss			0.3	dB
Isolation	18			dB
Amplitude Balance			± 0.2	dB
Phase Balance			± 2	Degrees
Input Power (CW)			150	Watts
Input Power (Peak)			300	kWatts

Mechanical Specifications

Size

Length	4.72 in [119.89 mm]
Width	8.54 in [216.92 mm]
Height	2.5 in [63.5 mm]
Weight	1.8 lbs [816.47 g]
Finish	Gray
Housing Material and Plating	Aluminum, Chromate Conversion

Configuration

Input Waveguide Size	WR-187
Input Flange Designation	CPR-187F
Input Body Material	Aluminum, Chromate Conversion

WR-187 2 Way Waveguide Power Divider From 5.3 GHz to 5.7 GHz CPR187F Flange, Aluminum



FMW187DV001

Output Waveguide Size	WR-187
Output Flange Designation	CPR-187F
Output Body Material	Aluminum, Chromate Conversion

Environmental Specifications

Temperature	
Operating Range	-40 to +70 deg C
Storage Range	-55 to +85 deg C

Compliance Certifications (see [product page](#) for current document)

Plotted and Other Data

Notes:

Typical Performance Data

WR-187 2 Way Waveguide Power Divider From 5.3 GHz to 5.7 GHz CPR187F Flange, Aluminum from Fairview Microwave is in-stock and available to ship same-day. All of our RF/microwave products are available off-the-shelf from our ISO 9001:2008 certified facilities in Lewisville, Texas. Fairview Microwave is RF on-demand.

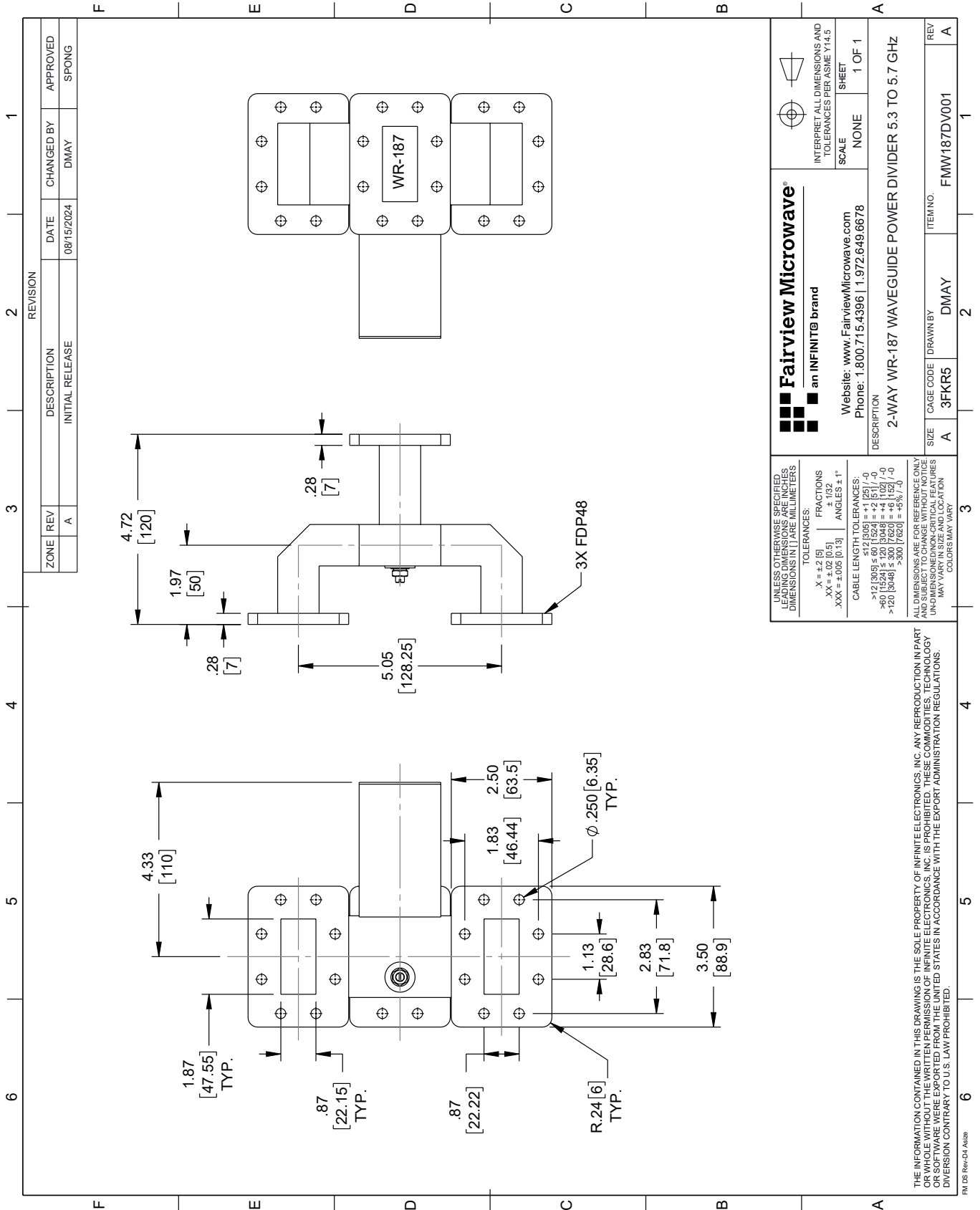
For additional information on this product, please click the following link: [WR-187 2 Way Waveguide Power Divider From 5.3 GHz to 5.7 GHz CPR187F Flange, Aluminum FMW187DV001](#)

URL: <https://www.fairviewmicrowave.com/wr-187-2-way-waveguide-power-divider-from-5.3-ghz-to-5.7-ghz-cpr187f-flange-aluminum-fmw187dv001-p.aspx>

The information contained within this document is accurate to the best of our knowledge and representative of the part described herein. It may be necessary to make modifications to the part and/or the documentation of the part in order to implement improvements. Fairview Microwave reserves the right to make such changes as required. Unless otherwise stated, all specifications are nominal. Fairview Microwave does not make any representation or warranty regarding the suitability of the part described herein for any particular purpose, and Fairview Microwave does not assume liability arising out of the use of any part or document.

FMW187DV001 CAD Drawing

WR-187 2 Way Waveguide Power Divider From 5.3 GHz to 5.7 GHz CPR187F Flange, Aluminum



UNLESS OTHERWISE SPECIFIED, LEADING DIMENSIONS ARE IN INCHES AND DIMENSIONS IN [] ARE MILLIMETERS.

TOLEANCES:
 .X = ±.2 [5] FRACTIONS ±.1/32
 .XX = ±.02 [0.5] ANGLES ± 1°
 .XXX = ±.005 [0.13]

CABLE LENGTH TOLERANCES:
 <12 [305] ±.60 [15.24] = ±.2 [5] / -0
 >12 [305] ≤.60 [15.24] = ±.4 [10] / -0
 >60 [1524] ≤.120 [3048] = ±.4 [10] / -0
 >120 [3048] ≤.300 [7620] = ±.6 [15] / -0

ALL DIMENSIONS ARE FOR REFERENCE ONLY. UNLESS OTHERWISE SPECIFIED, DIMENSIONS ARE IN INCHES AND DIMENSIONS IN [] ARE MILLIMETERS. COLORS MAY VARY.

THE INFORMATION CONTAINED IN THIS DRAWING IS THE SOLE PROPERTY OF INFINITE ELECTRONICS, INC. ANY REPRODUCTION IN PART OR WHOLE WITHOUT THE WRITTEN PERMISSION OF INFINITE ELECTRONICS, INC. IS PROHIBITED. THESE COMMODITIES, TECHNOLOGY OR SOFTWARE ARE EXPORTED FROM THE UNITED STATES IN ACCORDANCE WITH THE EXPORT ADMINISTRATION REGULATIONS. DIVERSION CONTRARY TO U.S. LAW PROHIBITED.

FM DS Rev-D4 Alt2b

 Fairview Microwave® an INFINIT® brand		 INTERPRET ALL DIMENSIONS AND TOLERANCES PER ASME Y14.5
Website: www.FairviewMicrowave.com Phone: 1.800.715.4396 1.972.649.6678		SCALE: NONE SHEET: 1 OF 1
DESCRIPTION: 2-WAY WR-187 WAVEGUIDE POWER DIVIDER 5.3 TO 5.7 GHz		
SIZE: A	CAGE CODE: DMAY	ITEM NO.: FMW187DV001
REV: A		