

## WR-15 2 Way Waveguide Power Divider From 55 GHz to 62 GHz UG-185/U Flange, Copper



### FMW15DV002

#### Features

- 2-Way Waveguide Power Divider
- WR-15 Waveguide Interface
- 55 to 62 GHz Frequency Range
- Max Power 2 Watts (CW)
- Insertion Loss 0.6 dB max
- Isolation 15 dB min

#### Applications

- Test Benches
- Radar
- Satellite
- Microwave Radio
- Attenuation Measurements
- Power Measurements

#### Description

Fairview Microwave carries a wide selection of waveguide power dividers to fit your needs. These components are essential in many systems, allowing the combination of multiple signals or splitting of a single signal into multiple signals with equal magnitude and phase. The FMW15DV002 is a 2-way waveguide power divider that operates from 55 to 62 GHz and can handle up to 2 Watts (CW) with 0.6 dB max insertion loss and 15 dB min isolation. The package uses WR-15 waveguide interface.

#### Electrical Specifications

Number of Output Ports 2

Description	Min	Typ	Max	Units
Frequency Range	55		62	GHz
Input VSWR			1.4:1	
Output VSWR			1.5:1	
Insertion Loss			0.6	dB
Isolation	15			dB
Amplitude Balance			± 0.5	dB
Phase Balance			± 5	Degrees
Input Power (CW)			2	Watts
Input Power (Peak)			250	Watts

#### Mechanical Specifications

##### Size

Length	1.18 in [29.97 mm]
Width	0.97 in [24.64 mm]
Height	0.83 in [21.08 mm]
Weight	0.14 lbs [63.5 g]
Finish	Gold
Housing Material and Plating	Copper, Gold

##### Configuration

Input Waveguide Size	WR-15
Input Flange Designation	UG-185/U
Input Body Material	Copper, Gold

## WR-15 2 Way Waveguide Power Divider From 55 GHz to 62 GHz UG-185/U Flange, Copper



### FMW15DV002

---

Output Waveguide Size	WR-15
Output Flange Designation	UG-185/U
Output Body Material	Copper, Gold

#### Environmental Specifications

<b>Temperature</b>	
Operating Range	-40 to +70 deg C
Storage Range	-55 to +85 deg C

**Compliance Certifications** (see [product page](#) for current document)

#### Plotted and Other Data

Notes:

#### Typical Performance Data

WR-15 2 Way Waveguide Power Divider From 55 GHz to 62 GHz UG-185/U Flange, Copper from Fairview Microwave is in-stock and available to ship same-day. All of our RF/microwave products are available off-the-shelf from our ISO 9001:2008 certified facilities in Lewisville, Texas. Fairview Microwave is RF on-demand.

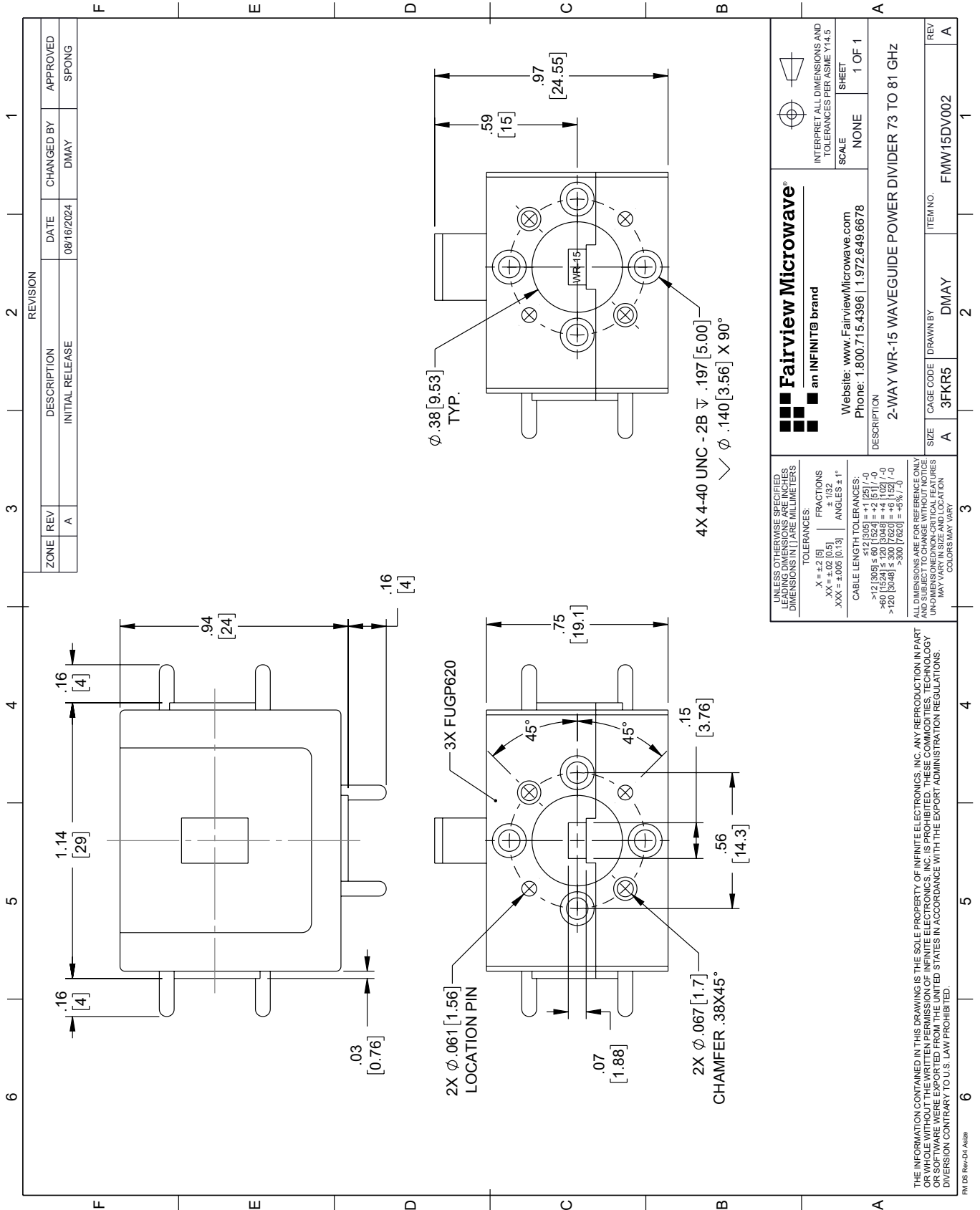
For additional information on this product, please click the following link: [WR-15 2 Way Waveguide Power Divider From 55 GHz to 62 GHz UG-185/U Flange, Copper FMW15DV002](#)

URL: <https://www.fairviewmicrowave.com/wr-15-2-way-waveguide-power-divider-from-55-ghz-to-62-ghz-ug185-u-flange-copper-fmw15dv001-p.aspx>

The information contained within this document is accurate to the best of our knowledge and representative of the part described herein. It may be necessary to make modifications to the part and/or the documentation of the part in order to implement improvements. Fairview Microwave reserves the right to make such changes as required. Unless otherwise stated, all specifications are nominal. Fairview Microwave does not make any representation or warranty regarding the suitability of the part described herein for any particular purpose, and Fairview Microwave does not assume liability arising out of the use of any part or document.

# FMW15DV002 CAD Drawing

WR-15 2 Way Waveguide Power Divider From 55 GHz to 62 GHz UG-185/U Flange, Copper



ZONE		REV	DESCRIPTION	DATE	CHANGED BY	APPROVED
A		A	INITIAL RELEASE	08/16/2024	DMAY	SPONG

REVISION	
1	

**Fairview Microwave®**  
an INFINITI® brand

Website: [www.FairviewMicrowave.com](http://www.FairviewMicrowave.com)  
Phone: 1.800.715.4396 | 1.972.649.6678

UNLESS OTHERWISE SPECIFIED, LEADING DIMENSIONS ARE IN INCHES AND TRAILING DIMENSIONS IN [ ] ARE MILLIMETERS.

TOLERANCES:  
 .X = ±.2 [5]      FRACTIONS ± 1/32  
 .XX = ±.02 [0.5]      ANGLES ± 1°  
 .XXX = ±.005 [0.13]

CABLE LENGTH TOLERANCES:  
 <12 [305] ≤ 60 [1524] = ±.1 [25] / -0  
 >60 [1524] ≤ 120 [3048] = ±.4 [102] / -0  
 >120 [3048] ≤ 300 [7620] = ±.8 [20] / -0

ALL DIMENSIONS ARE FOR REFERENCE ONLY. UNLESS OTHERWISE SPECIFIED, DIMENSIONS ARE IN INCHES AND TRAILING DIMENSIONS IN [ ] ARE MILLIMETERS. COLORS MAY VARY.

INTERPRET ALL DIMENSIONS AND TOLERANCES PER ASME Y14.5

SCALE: NONE      SHEET: 1 OF 1

DESCRIPTION: 2-WAY WR-15 WAVEGUIDE POWER DIVIDER 73 TO 81 GHz

SIZE: A      CAGE CODE: 3FKR5      DRAWN BY: DMAY      ITEM NO.: FMW15DV002      REV: A

THE INFORMATION CONTAINED IN THIS DRAWING IS THE SOLE PROPERTY OF INFINITE ELECTRONICS, INC. ANY REPRODUCTION IN PART OR WHOLE WITHOUT THE WRITTEN PERMISSION OF INFINITE ELECTRONICS, INC. IS PROHIBITED. THESE COMMODITIES, TECHNOLOGY OR SOFTWARE WERE EXPORTED FROM THE UNITED STATES IN ACCORDANCE WITH THE EXPORT ADMINISTRATION REGULATIONS. DIVISION CONTRARY TO U.S. LAW PROHIBITED.

FM DS Rev-D4 Alt2b