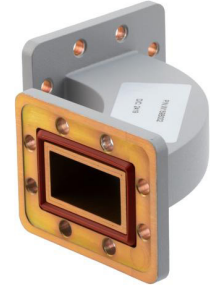


## WR-159 Waveguide H-Bend using UG Cover and Grooved Flanges with a 4.64 GHz to 7.05 GHz Frequency Range

### FMW159B002



#### Features

- WR-159 Waveguide E-Plane Bend
- UG Cover and UG Grooved Flange
- 4.64 GHz to 7.05 GHz Frequency Ranges
- Comprehensive waveguide offerings also includes Waveguide Sections, Waveguide to Coax Adapters, Filters, Terminations, and more.

#### Applications

- Transmission Systems
- Test and Laboratory Setups

#### Description

FMW159B002 is a WR-159 waveguide bend that is a H-Plane Bend type with a UG Cover and UG Grooved flange. This WR-159 H-Bend waveguide with UG Cover and UG Grooved from Fairview Microwave is Instrumentation grade. Our WR-159 Instrumentation grade waveguide bend has a minimum frequency of 4.64 GHz and a maximum frequency of 7.05 GHz. WR-159 waveguide bend FMW159B002 is part of over 40,000 RF, microwave and millimeter wave components available from Fairview Microwave. This Instrumentation grade WR-159 E-Bend waveguide with UG Cover and UG Grooved flange can ship worldwide the same day as it is purchased as with our other available RF parts.

#### Electrical Specifications

Description	Minimum	Typical	Maximum	Units
Frequency Range	4.64		7.05	GHz
VSWR			1.1:1	
Insertion Loss		0.2		dB

#### Mechanical Specifications

Waveguide Size WR-159

Description	Flange 1	Waveguide	Flange 2
Flange Type	UG Cover		UG Grooved
Flange Designation	UG	WR-159	UG
Material	Aluminum	Aluminum	Aluminum
Plating	Chromate Conversion	Chromate Conversion	Chromate Conversion

#### Temperature

Operating Range -40 to +70 deg C

#### Size

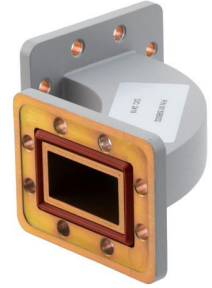
Weight 0.52 lbs [235.87 g]

**Compliance Certifications** (see [product page](#) for current document)

#### Plotted and Other Data

Notes:

## WR-159 Waveguide H-Bend using UG Cover and Grooved Flanges with a 4.64 GHz to 7.05 GHz Frequency Range



### FMW159B002

WR-159 Waveguide H-Bend using UG Cover and Grooved Flanges with a 4.64 GHz to 7.05 GHz Frequency Range from Fairview Microwave is in-stock and available to ship same-day. All of our RF/microwave products are available off-the-shelf from our ISO 9001:2008 certified facilities in Lewisville, Texas. Fairview Microwave is RF on-demand.

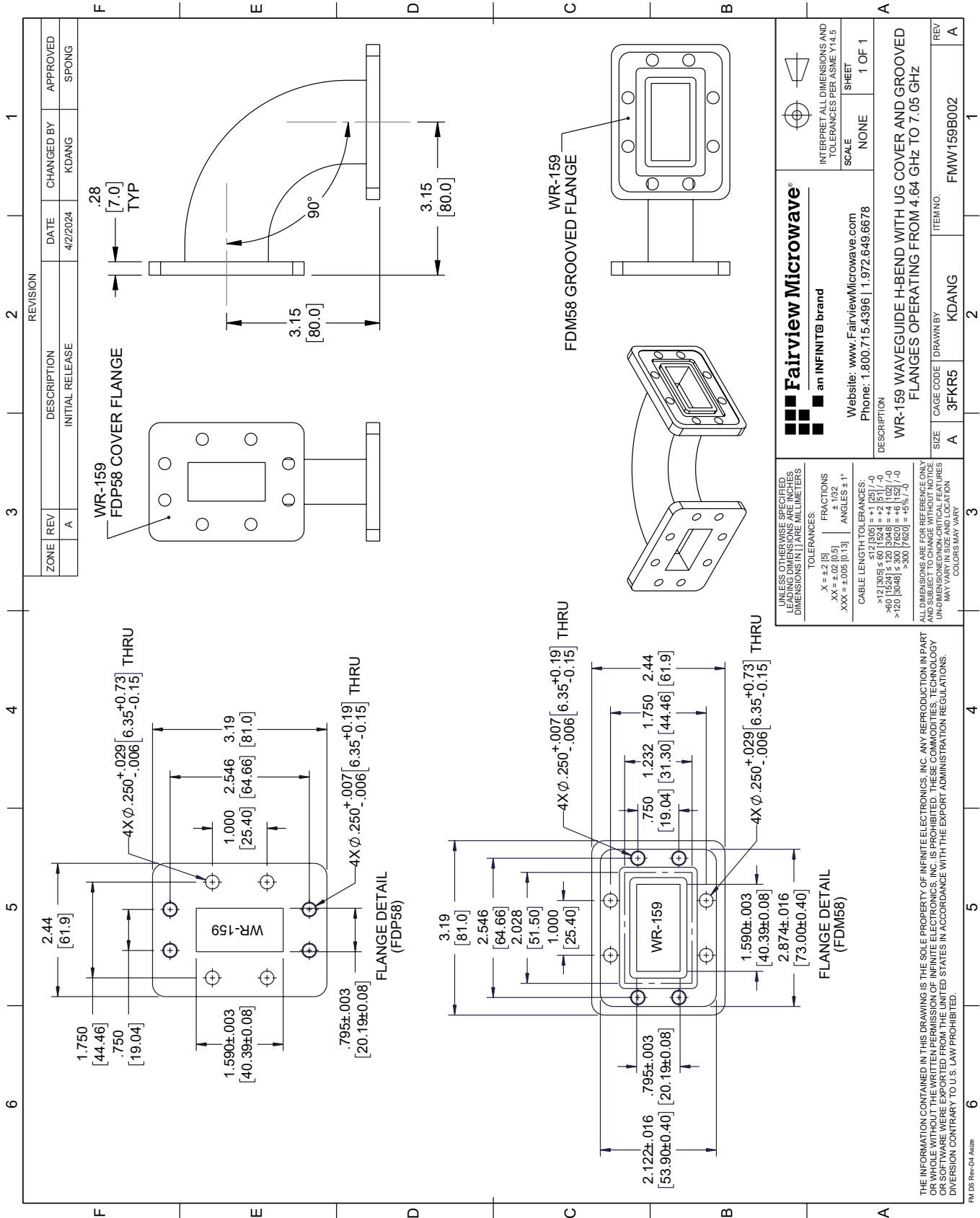
For additional information on this product, please click the following link: [WR-159 Waveguide H-Bend using UG Cover and Grooved Flanges with a 4.64 GHz to 7.05 GHz Frequency Range FMW159B002](https://www.fairviewmicrowave.com/wr-159-waveguide-h-bend-ug-flange-4.64-7.05-ghz-fmw159b002-p.aspx)

URL: <https://www.fairviewmicrowave.com/wr-159-waveguide-h-bend-ug-flange-4.64-7.05-ghz-fmw159b002-p.aspx>

The information contained within this document is accurate to the best of our knowledge and representative of the part described herein. It may be necessary to make modifications to the part and/or the documentation of the part in order to implement improvements. Fairview Microwave reserves the right to make such changes as required. Unless otherwise stated, all specifications are nominal. Fairview Microwave does not make any representation or warranty regarding the suitability of the part described herein for any particular purpose, and Fairview Microwave does not assume liability arising out of the use of any part or document.

# FMW159B002 CAD Drawing

WR-159 Waveguide H-Bend using UG Cover and Grooved Flanges with a 4.64 GHz to 7.05 GHz Frequency Range



ZONE	REV	DESCRIPTION	DATE	CHANGED BY	APPROVED
	A	INITIAL RELEASE	4/2/2024	KDANG	SPONG

**Fairview Microwave**  
an INFINITI® brand

Website: [www.FairviewMicrowave.com](http://www.FairviewMicrowave.com)  
Phone: 1.800.715.4396 | 1.972.649.6678

DESCRIPTION: WR-159 WAVEGUIDE H-BEND WITH UG COVER AND GROOVED FLANGES OPERATING FROM 4.64 GHz TO 7.05 GHz

SIZE: A  
CAGE CODE: 3FKR5  
DRAWN BY: KDANG  
ITEM NO.: FMW159B002

SCALE: NONE  
SHEET: 1 OF 1

INTERPRET ALL DIMENSIONS AND TOLERANCES PER ASME Y14.5

UNLESS OTHERWISE SPECIFIED, LEADING DIMENSIONS ARE IN INCHES. DIMENSIONS IN [ ] ARE MILLIMETERS.

TOLERANCES:  
 .X = ±.05  
 .XX = ±.02 [0.13]  
 .XXX = ±.005 [0.13]

FRACTIONS: ± 1/32  
 ANGLES: ± 1°

CABLE LENGTH TOLERANCES:  
 <12 [305] ≤ 60 [1524] = +1 [25] / -0  
 >60 [1524] ≤ 120 [3048] = +4 [102] / -0  
 >120 [3048] ≤ 300 [7620] = +5% / -0

ALL DIMENSIONS ARE FOR REFERENCE ONLY. UNDIMENSIONED/NON-CRITICAL FEATURES MAY VARY IN SIZE AND LOCATION. COLORS MAY VARY.

THE INFORMATION CONTAINED IN THIS DRAWING IS THE SOLE PROPERTY OF INFINITE ELECTRONICS, INC. ANY REPRODUCTION IN PART OR WHOLE WITHOUT THE WRITTEN PERMISSION OF INFINITE ELECTRONICS, INC. IS PROHIBITED. THESE COMMODITIES, TECHNOLOGY OR SOFTWARE WERE EXPORTED FROM THE UNITED STATES IN ACCORDANCE WITH THE EXPORT ADMINISTRATION REGULATIONS. DIVERSION CONTRARY TO U.S. LAW PROHIBITED.

FM DS Rev-D4 Alt2b