

WR-137 Waveguide Shim, CPR-137F and CPR-137G Flanges, Frequency Range: 5.38 GHz to 8.17 GHz, 5 mm Thick Brass Construction

FMW137FS5 is a WR-137 waveguide shim with operating frequency range from 5.38 GHz to 8.17 GHz. This waveguide shim is fabricated with 5 mm thick brass by high precision manufacturing process. FMW137FS5 can be used to bridge gaps between WR-137 waveguide components with CPR-137F flanges. Fairview Microwave offers wide selection of waveguide components with high performance available in stock and same-day shipping to customers worldwide.

Electrical Specifications*

Description	Min	Typ	Max	Units
Frequency Range	5.38		8.17	GHz

Mechanical Specifications

Body Material	Brass
Body Finish	Anticorrosion Grey Paint
Length	0.197 in [5 mm]
Width	2.689 in [68.3 mm]
Height	1.937 in [49.2 mm]
Weight	0.25 lbs [113.4 g]

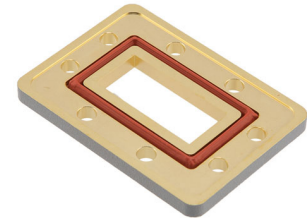
Compliance Certifications (see [product page](#) for current document)

WR-137 Waveguide Shim, CPR-137F and CPR-137G Flanges, Frequency Range: 5.38 GHz to 8.17 GHz, 5 mm Thick Brass Construction from Fairview Microwave is in-stock and available to ship same-day. All of our RF/microwave products are available off-the-shelf from our ISO 9001:2008 certified facilities in Lewisville, Texas. Fairview Microwave is RF on-demand.

For additional information on this product, please click the following link: [WR-137 Waveguide Shim, CPR-137F and CPR-137G Flanges, Frequency Range: 5.38 GHz to 8.17 GHz, 5 mm Thick Brass Construction FMW137FS5](#)

URL: <https://www.fairviewmicrowave.com/wr-137-waveguide-shim-5-mm-brass-cpr-137f-fmw137fs5-p.aspx>

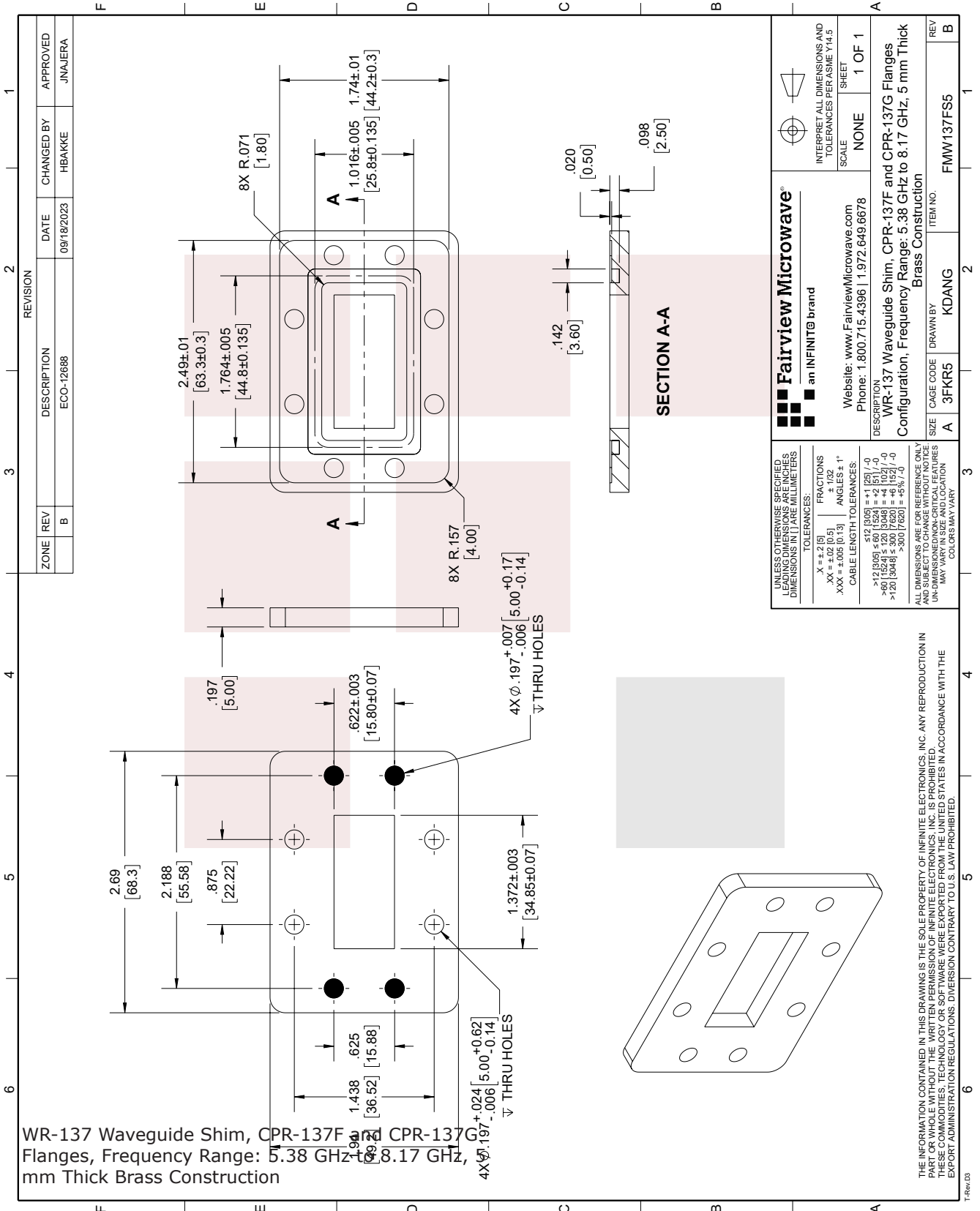
The information contained in this document is accurate to the best of our knowledge and representative of the part described herein. It may be necessary to make modifications to the part and/or the documentation of the part, in order to implement improvements. Fairview Microwave reserves the right to make such changes as required. Unless otherwise stated, all specifications are nominal. Fairview Microwave does not make any representation or warranty regarding the suitability of the part described herein for any particular purpose, and Fairview Microwave does not assume any liability arising out of the use of any part or documentation.



Features:

- WR-137 Waveguide Shim
- CPR-137F and CPR-137G Flange Configuration
- Frequency Range: 5.38 GHz to 8.17 GHz
- 5 mm Thick Brass Construction

Fairview Microwave
301 Leora Ln., Suite 100
Lewisville, TX 75056
Tel: 1-800-715-4396 / (972) 649-6678
Fax: (972) 649-6689
www.fairviewmicrowave.com
sales@fairviewmicrowave.com



WR-137 Waveguide Shim, CPR-137F and CPR-137G Flanges, Frequency Range: 5.38 GHz to 8.17 GHz, 5 mm Thick Brass Construction

ZONE	REV	DESCRIPTION	DATE	CHANGED BY	APPROVED
	B	ECO-12688	09/18/2023	HBAKKE	JINAJERA

REVISION	DESCRIPTION	DATE	CHANGED BY	APPROVED
1				

Fairview Microwave
an INFINIT[®] brand

Website: www.FairviewMicrowave.com
Phone: 1.800.715.4396 | 1.972.649.6678

INTERPRET ALL DIMENSIONS AND TOLERANCES PER ASME Y14.5
SCALE: NONE
SHEET: 1 OF 1

DESCRIPTION:
WR-137 Waveguide Shim, CPR-137F and CPR-137G Flanges
Configuration, Frequency Range: 5.38 GHz to 8.17 GHz, 5 mm Thick
Brass Construction

ITEM NO. FMW137FS5

SIZE: A
CAGE CODE: 3FKR5
DRAWN BY: KDANG
REV: B

UNLESS OTHERWISE SPECIFIED, LEADING DIMENSIONS ARE IN INCHES DIMENSIONS IN [] ARE MILLIMETERS

TOLERANCES:

.X = ±.2 [5]	FRACTIONS ± 1/32
.XX = ±.02 [0.5]	ANGLES ± 1°
.XXX = ±.005 [0.13]	CABLE LENGTH TOLERANCES:
	>12 [303] ≤ 60 [1524] = ±.01 [-0]
	>60 [1524] ≤ 300 [7620] = ±.015 [-0]
	>300 [7620] ≤ 300 [7620] = ±.02 [-0]
	>300 [7620] = ±.02 [-0]

ALL DIMENSIONS ARE FOR REFERENCE ONLY AND SUBJECT TO CHANGE WITHOUT NOTICE UNLESS OTHERWISE SPECIFIED. DIMENSIONS MAY VARY.

THE INFORMATION CONTAINED IN THIS DRAWING IS THE SOLE PROPERTY OF INFINITE ELECTRONICS, INC. ANY REPRODUCTION IN PART OR WHOLE WITHOUT THE WRITTEN PERMISSION OF INFINITE ELECTRONICS, INC. IS PROHIBITED. EXPORT ADMINISTRATION REGULATIONS: DIVERSION CONTRARY TO U.S. LAW PROHIBITED.