

## WR-137 2 Way Waveguide Power Divider From 5.85 GHz to 6.7 GHz CPR137F Flange, Aluminum



### FMW137DV001

#### Features

- 2-Way Waveguide Power Divider
- WR-137 Waveguide Interface
- 5.85 to 6.7 GHz Frequency Range
- Max Power 100 Watts (CW)
- Insertion Loss 0.3 dB max
- Isolation 18 dB min

#### Applications

- Test Benches
- Radar
- Satellite
- Microwave Radio
- Attenuation Measurements
- Power Measurements

#### Description

Fairview Microwave carries a wide selection of waveguide power dividers to fit your needs. These components are essential in many systems, allowing the combination of multiple signals or splitting of a single signal into multiple signals with equal magnitude and phase. The FMW137DV001 is a 2-way waveguide power divider that operates from 5.85 to 6.7 GHz and can handle up to 100 Watts (CW) with 0.3 dB max insertion loss and 18 dB min isolation. The package uses WR-137 waveguide interface.

#### Electrical Specifications

Number of Output Ports 2

Description	Min	Typ	Max	Units
Frequency Range	5.85		6.7	GHz
Input VSWR			1.3:1	
Output VSWR			1.3:1	
Insertion Loss			0.3	dB
Isolation	18			dB
Amplitude Balance			± 0.2	dB
Phase Balance			± 2	Degrees
Input Power (CW)			100	Watts
Input Power (Peak)			50	kWatts

#### Mechanical Specifications

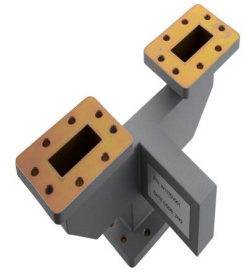
##### Size

Length	3.54 in [89.92 mm]
Width	7.41 in [188.21 mm]
Height	1.94 in [49.28 mm]
Weight	1.7 lbs [771.11 g]
Finish	Gray
Housing Material and Plating	Aluminum, Chromate Conversion

##### Configuration

Input Waveguide Size	WR-137
Input Flange Designation	CPR-137F
Input Body Material	Aluminum, Chromate Conversion

## WR-137 2 Way Waveguide Power Divider From 5.85 GHz to 6.7 GHz CPR137F Flange, Aluminum



### FMW137DV001

---

Output Waveguide Size	WR-137
Output Flange Designation	CPR-137F
Output Body Material	Aluminum, Chromate Conversion

#### Environmental Specifications

<b>Temperature</b>	
Operating Range	-40 to +70 deg C
Storage Range	-55 to +85 deg C

**Compliance Certifications** (see [product page](#) for current document)

#### Plotted and Other Data

Notes:

#### Typical Performance Data

WR-137 2 Way Waveguide Power Divider From 5.85 GHz to 6.7 GHz CPR137F Flange, Aluminum from Fairview Microwave is in-stock and available to ship same-day. All of our RF/microwave products are available off-the-shelf from our ISO 9001:2008 certified facilities in Lewisville, Texas. Fairview Microwave is RF on-demand.

For additional information on this product, please click the following link: [WR-137 2 Way Waveguide Power Divider From 5.85 GHz to 6.7 GHz CPR137F Flange, Aluminum FMW137DV001](#)

URL: <https://www.fairviewmicrowave.com/wr-137-2-way-waveguide-power-divider-from-5.85-ghz-to-6.7-ghz-cpr137f-flange-aluminum-fmw137dv001-p.aspx>

The information contained within this document is accurate to the best of our knowledge and representative of the part described herein. It may be necessary to make modifications to the part and/or the documentation of the part in order to implement improvements. Fairview Microwave reserves the right to make such changes as required. Unless otherwise stated, all specifications are nominal. Fairview Microwave does not make any representation or warranty regarding the suitability of the part described herein for any particular purpose, and Fairview Microwave does not assume liability arising out of the use of any part or document.

# FMW137DV001 CAD Drawing

WR-137 2 Way Waveguide Power Divider From 5.85 GHz to 6.7 GHz CPR137F Flange, Aluminum

