

**Manual SPDT Toggle Switch from DC to 22 GHz,
SMA Female, and Rated to 50 Watts**

FMSM1000 is a manual single pull double throw (SPDT) RF coaxial Switch, in a break before make configuration with manual toggle actuator. This unit operates across the DC to 22 GHz Frequency Range with a max VSWR of 1.6:1 and a max Insertion Loss of 0.6 dB. It features a electroless Nickel plated Aluminum housing and passivated stainless steel SMA female connectors with Gold plated beryllium Copper contacts.

Electrical Specifications

Design	SPDT
Actuator Type	Manual
Selector Type	Toggle
RF Connector Type	SMA Female
RF Connector Specs.	MIL-PRF-39012

Description	Min	Typ	Max	Units
Frequency Range	DC		22	GHz
Impedance		50		Ohms
Input Power (CW)			50	Watts

Performance by Frequency

Description	F1	F2	F3	F4	F5	Units
Frequency Range	DC - 3	3 - 8	8 - 12.4	12.4 - 18	18 - 22	GHz
VSWR, Max	1.2:1	1.3:1	1.4:1	1.5:1	1.6:1	
IL, Max	0.2	0.3	0.4	0.8	0.6	dB
Isolation, Min	80	70	60	60	55	dB

Mechanical Specifications

Size	
Length	1.5 in [38.1 mm]
Width/Diameter	0.5 in [12.7 mm]
Height	1.53 in [38.86 mm]
Weight	0.0655 lbs [29.71 g]
Body Material and Plating	Aluminum, Nickel

Connectors

RF Connector Type	SMA Female
RF Connector Specs.	MIL-PRF-39012
RF Connector Contact Material & Plating	Beryllium Copper, Gold

Environmental Specifications

Temperature	
Operating Range	-35 to +85 deg C



Features:

- SPDT
- Manual Toggle Switch
- 55 dB min Isolation
- DC to 22 GHz Frequency Range
- Nickel Plated Aluminum Housing
- Low VSWR
- SMA Female Connertors

Applications:

- Test and Measurement
- Military Communications
- Commercial Communications
- Wireless Communications
- SATCOM

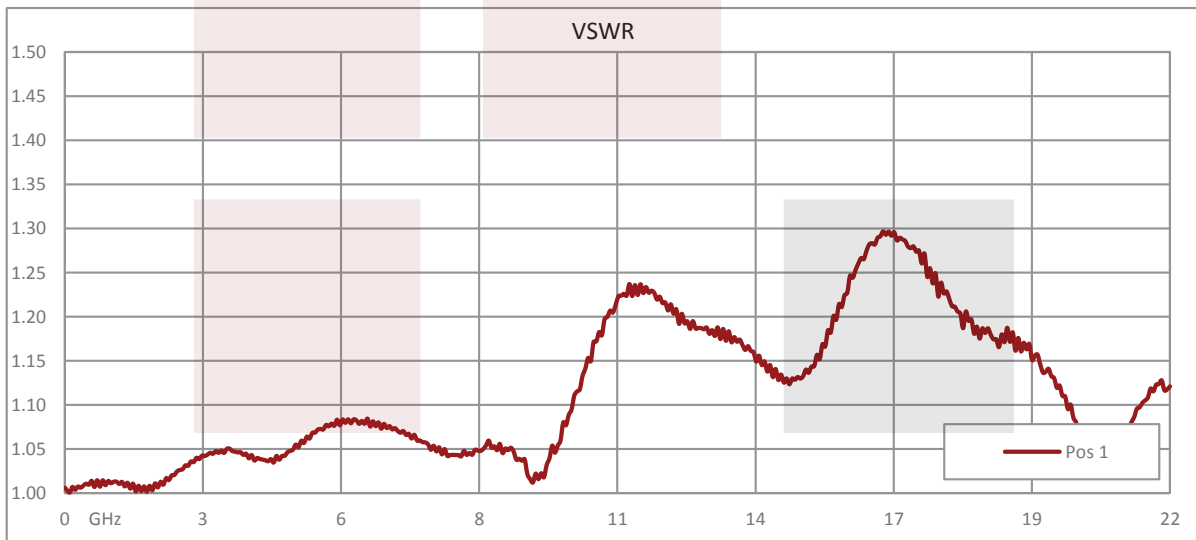
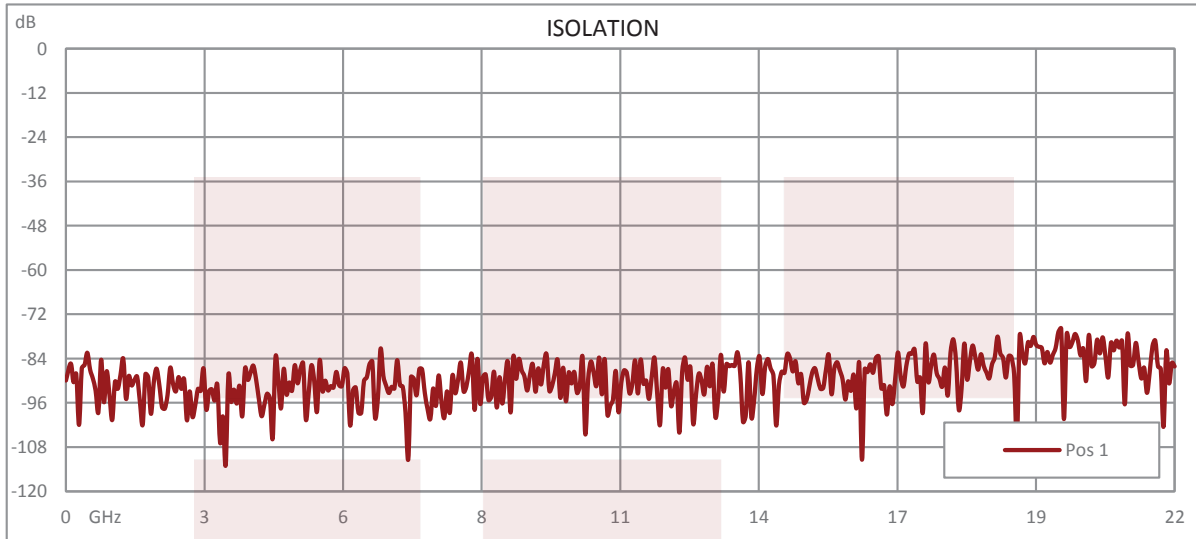
Fairview Microwave
1130 Junction Dr. #100
Allen, TX 75013
Tel: 1-800-715-4396 / (972) 649-6678
Fax: (972) 649-6689
www.fairviewmicrowave.com
sales@fairviewmicrowave.com

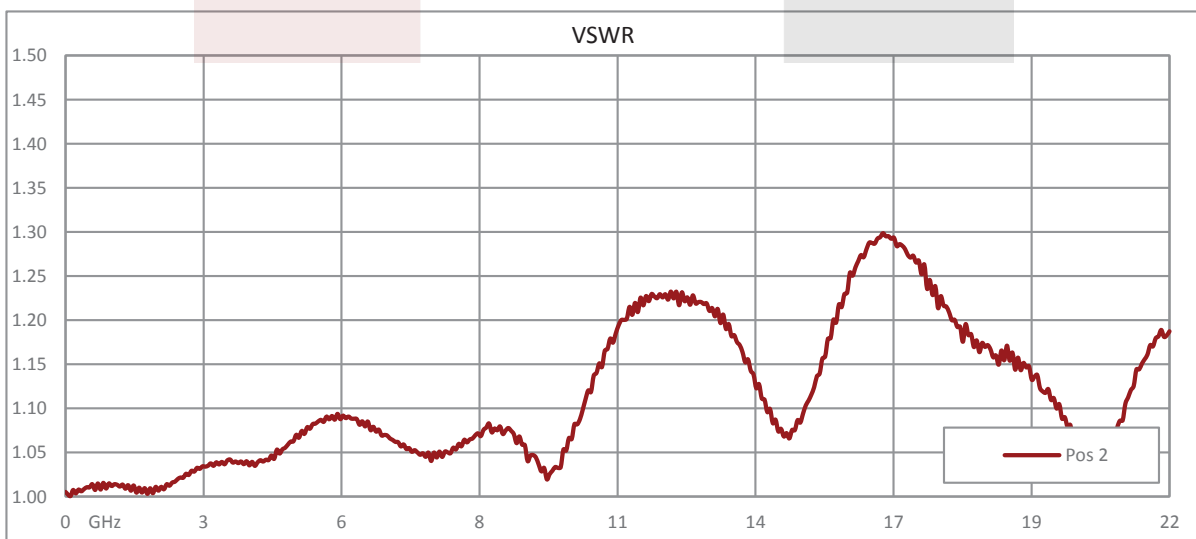
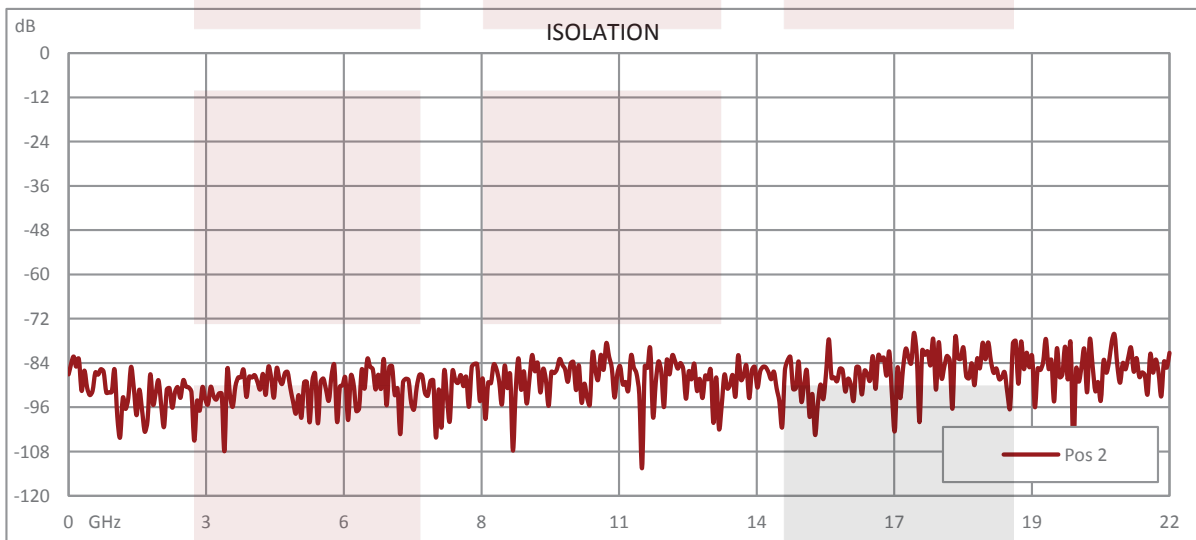
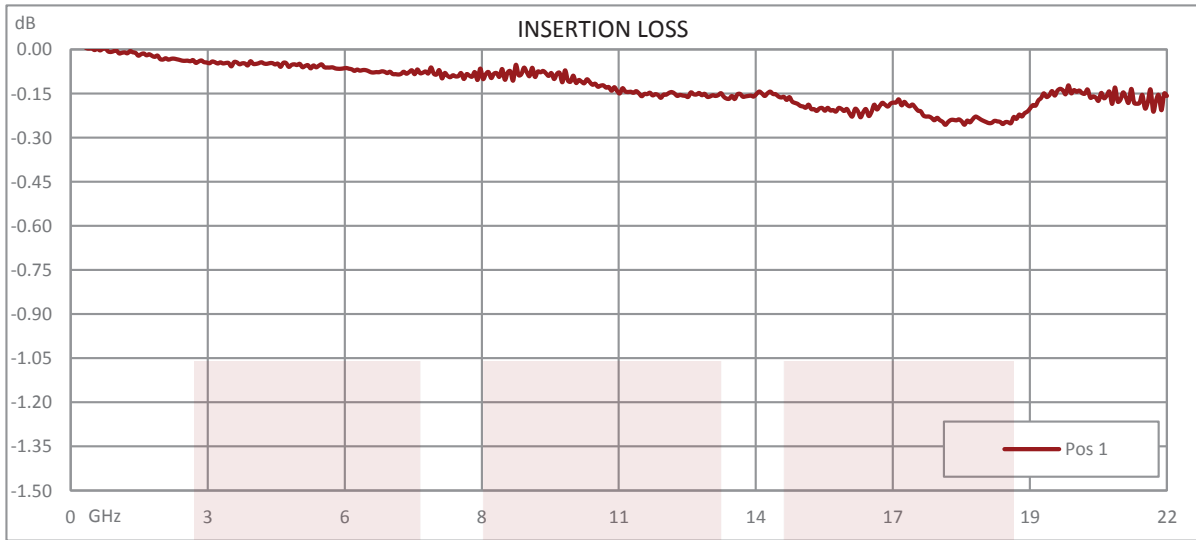
Compliance Certifications (see [product page](#) for current document)

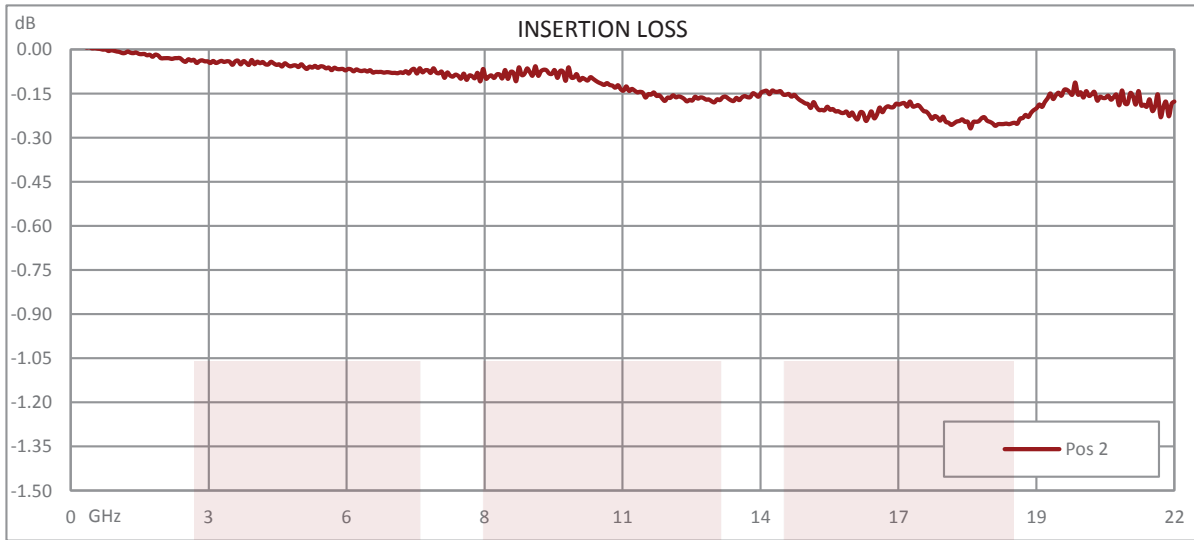
Plotted and Other Data

Notes:

Typical Performance Data





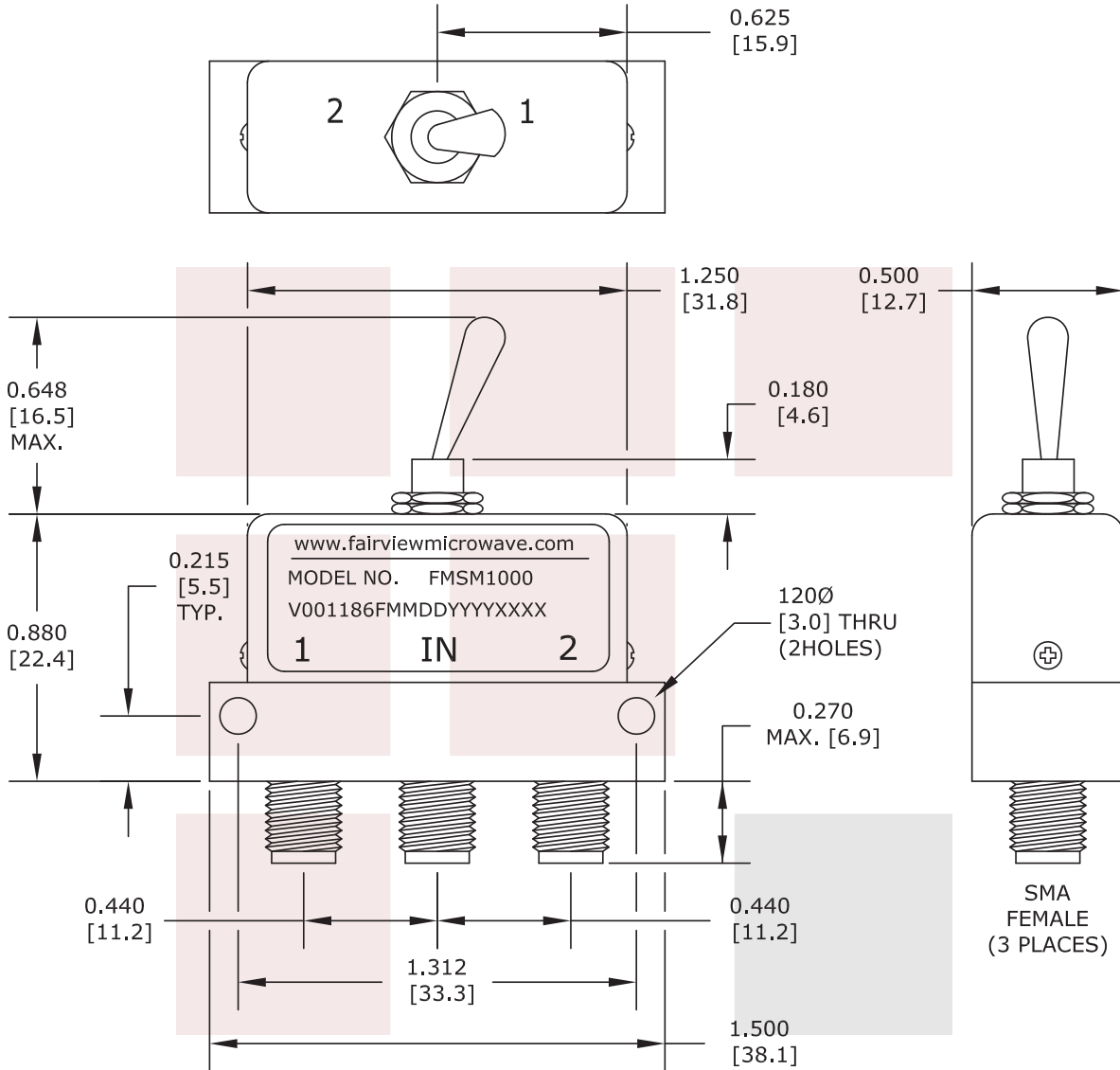


Manual SPDT Toggle Switch from DC to 22 GHz, SMA Female, and Rated to 50 Watts from Fairview Microwave is in-stock and available to ship same-day. All of our RF/microwave products are available off-the-shelf from our ISO 9001:2008 certified facilities in Allen, Texas. Fairview Microwave is RF on-demand.

For additional information on this product, please click the following link: [Manual SPDT Toggle Switch from DC to 22 GHz, SMA Female, and Rated to 50 Watts FMSM1000](#)

URL: <https://www.fairviewmicrowave.com/0-port-sma-manual-coaxial-switch-surge-protection-dc-22-ghz-50watts-fmsm1000-p.aspx>

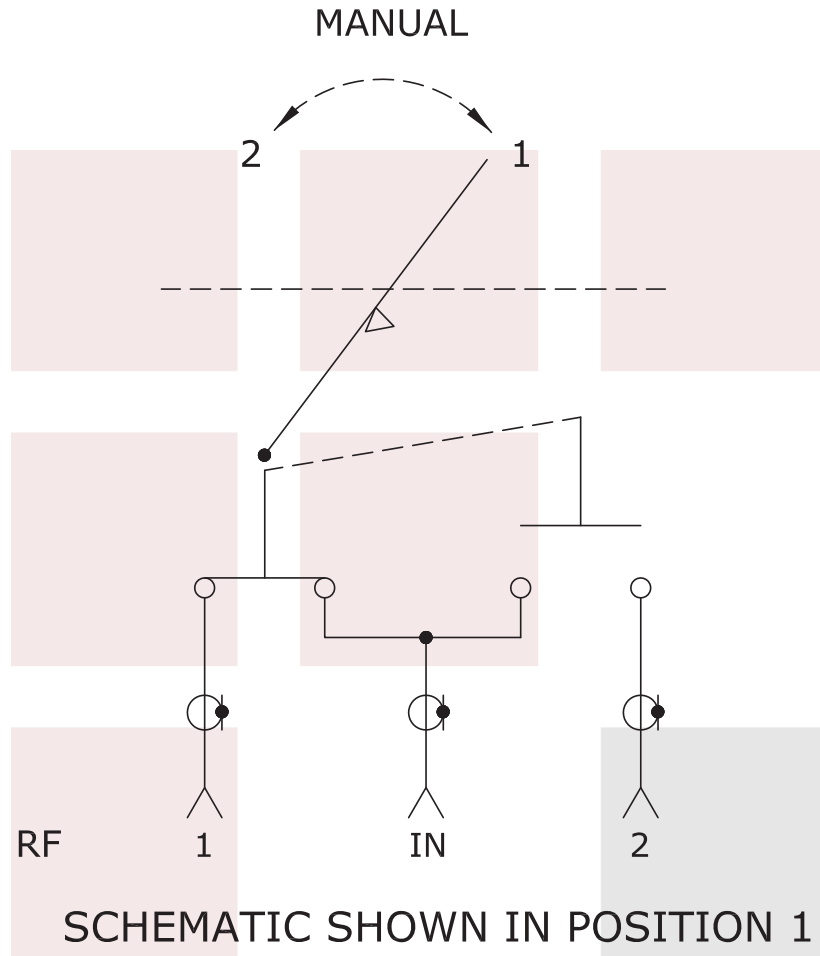
The information contained in this document is accurate to the best of our knowledge and representative of the part described herein. It may be necessary to make modifications to the part and/or the documentation of the part, in order to implement improvements. Fairview Microwave reserves the right to make such changes as required. Unless otherwise stated, all specifications are nominal. Fairview Microwave does not make any representation or warranty regarding the suitability of the part described herein for any particular purpose, and Fairview Microwave does not assume any liability arising out of the use of any part or documentation.



STANDARD TOLERANCES	
.X	±0.2
.XX	±0.1
.XXX	±0.05

*STANDARD TOLERANCES APPLY ONLY TO DIMENSIONS IN INCHES

FAIRVIEW MICROWAVE INC. ALLEN, TX 75013 WWW.FAIRVIEWMICROWAVE.COM		NOTES: 1. UNLESS OTHERWISE SPECIFIED ALL DIMENSIONS ARE NOMINAL. 2. ALL SPECIFICATIONS ARE SUBJECT TO CHANGE WITHOUT NOTICE AT ANY TIME. 3. DIMENSIONS ARE IN INCHES [mm].			
TITLE Manual SPDT Toggle Switch from DC to 22 GHz, SMA Female, and Rated to 50 Watts		DWG NO FMSM1000		CAGE CODE 3FKR5	
CAD FILE	012317	SHEET	SCALE	N/A	SIZE A 2233



STANDARD TOLERANCES

.X ±0.2
.XX ±0.1
.XXX ±0.05

*STANDARD TOLERANCES APPLY ONLY TO DIMENSIONS IN INCHES

FAIRVIEW MICROWAVE INC. ALLEN, TX 75013 WWW.FAIRVIEWMICROWAVE.COM		NOTES: 1. UNLESS OTHERWISE SPECIFIED ALL DIMENSIONS ARE NOMINAL. 2. ALL SPECIFICATIONS ARE SUBJECT TO CHANGE WITHOUT NOTICE AT ANY TIME. 3. DIMENSIONS ARE IN INCHES [mm].			
TITLE Manual SPDT Toggle Switch from DC to 22 GHz, SMA Female, and Rated to 50 Watts		DWG NO FMSM1000		CAGE CODE 3FKR5	
CAD FILE	012317	SHEET	SCALE	N/A	SIZE A 2233