

## Matching Pad 50 Ohm N Male to 75 Ohm N Female Operating from DC to 3 GHz

Fairview Microwave's FMMP1101 is a 50 ohm N male to 75 ohm N female matching pad that operates from DC to 3 GHz. This N to N impedance matching pad offers a low VSWR of 1.25:1 max and attenuation of 7.5 dB max. FMMP1101 50 ohm to 75 ohm minimum loss pad has a maximum CW power rating of 0.5 Watt. Matching pads are used to match the different impedance between two devices, maximizing power transfer between the two impedances. Fairview Microwave's minimum loss impedance matching pads are available in various connector combinations to fit your needs, all of which ship the same day.



### Electrical Specifications

Description	Min	Typ	Max	Units
Frequency Range	DC		3	GHz
VSWR		1.15:1	1.25:1	
Attenuation		4	7.5	dB
Input Power, CW			0.5	Watts

### Mechanical Specifications

#### Size

Length	2.41 in [61.21 mm]
Width	0.82 in [20.83 mm]
Height	0.82 in [20.83 mm]
Weight	0.04 lbs [18.14 g]
Housing Material and Plating	Brass, Tri-Metal

#### Connector 1

Description	Connector
Type	N Male
Impedance	50 Ohms
Inner Conductor Material and Plating	Beryllium Copper, Gold
Body Material and Plating	Brass, Tri-Metal

#### Connector 2

Description	Connector
Type	N Female
Impedance	75 Ohms
Inner Conductor Material and Plating	beryllium copper, Gold
Body Material and Plating	Brass, Tri-Metal

### Configuration:

- Connector 1: 50 Ohms N Male
- Connector 2: 75 Ohms N Female

### Features:

- DC to 3 GHz Frequency Range
- Low VSWR < 1.25:1
- 0.5 W Max Power (CW)

### Applications:

- CATV / Cable Networks
- Test and Measurement
- Communication Systems
- Wireless Systems

Fairview Microwave  
 301 Leora Ln., Suite 100  
 Lewisville, TX 75056  
 Tel: 1-800-715-4396 / (972) 649-6678  
 Fax: (972) 649-6689  
[www.fairviewmicrowave.com](http://www.fairviewmicrowave.com)  
[sales@fairviewmicrowave.com](mailto:sales@fairviewmicrowave.com)

**Compliance Certifications** (see [product page](#) for current document)

**Plotted and Other Data**

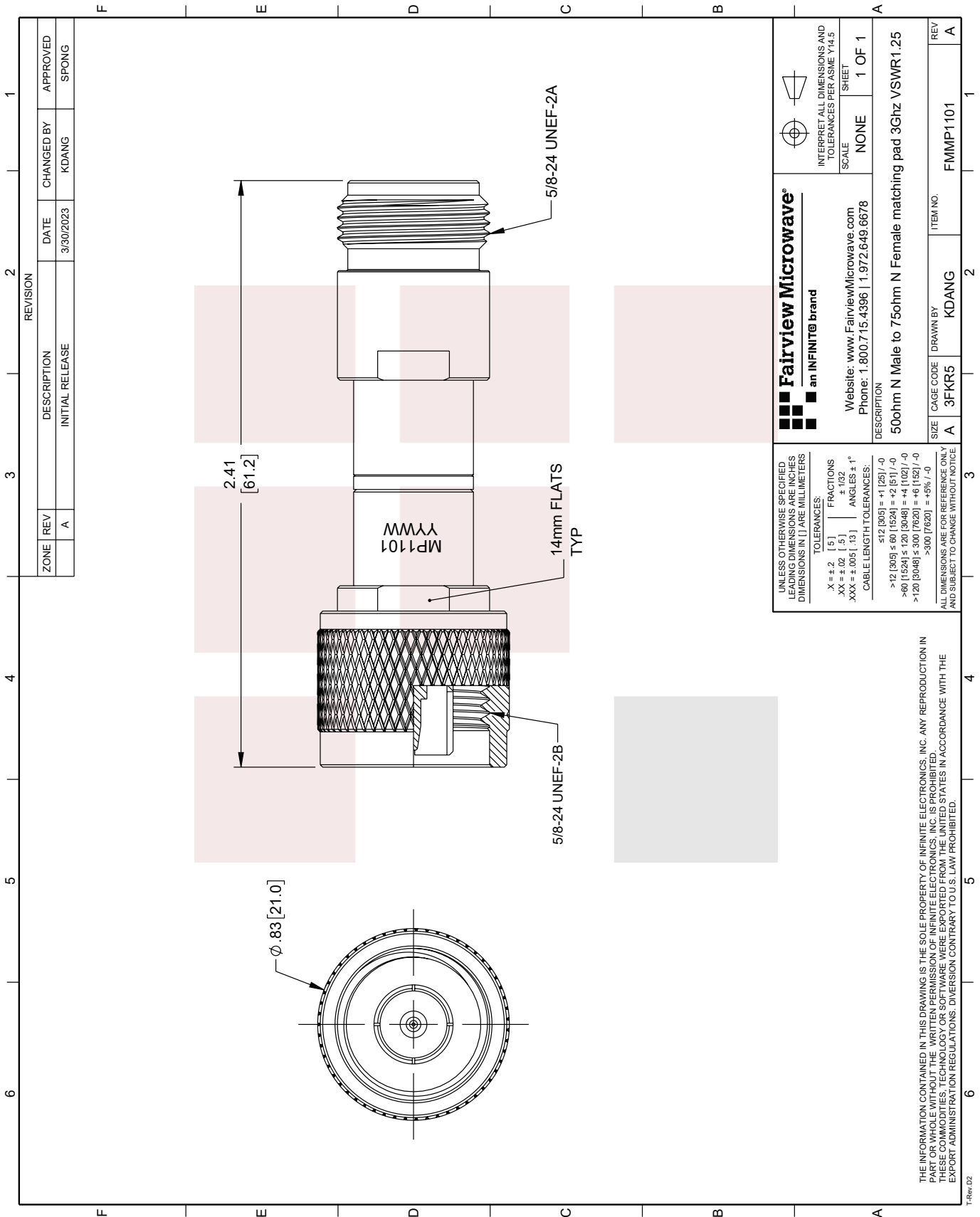
Notes:

Matching Pad 50 Ohm N Male to 75 Ohm N Female Operating from DC to 3 GHz from Fairview Microwave is in-stock and available to ship same-day. All of our RF/microwave products are available off-the-shelf from our ISO 9001:2008 certified facilities in Lewisville, Texas. Fairview Microwave is RF on-demand.

For additional information on this product, please click the following link: [Matching Pad 50 Ohm N Male to 75 Ohm N Female Operating from DC to 3 GHz FMMP1101](#)

URL: <https://www.fairviewmicrowave.com/matching-pad-n-n-3-mhz-fmmp1101-p.aspx>

The information contained in this document is accurate to the best of our knowledge and representative of the part described herein. It may be necessary to make modifications to the part and/or the documentation of the part, in order to implement improvements. Fairview Microwave reserves the right to make such changes as required. Unless otherwise stated, all specifications are nominal. Fairview Microwave does not make any representation or warranty regarding the suitability of the part described herein for any particular purpose, and Fairview Microwave does not assume any liability arising out of the use of any part or documentation.



ZONE		REVISION		DESCRIPTION		DATE		CHANGED BY		APPROVED	
A				INITIAL RELEASE		3/30/2023		KDANG		SPONG	

<p><b>Fairview Microwave</b> an INFINIT<sup>®</sup> brand</p> <p>Website: <a href="http://www.FairviewMicrowave.com">www.FairviewMicrowave.com</a> Phone: 1.800.715.4396   1.972.649.6678</p>		<p>INTERPRET ALL DIMENSIONS AND TOLERANCES PER ASME Y14.5 SHEET</p> <p>SCALE: NONE</p> <p>SHEET: 1 OF 1</p>	
<p>DESCRIPTION: 50ohm N Male to 75ohm N Female matching pad 3Ghz VSWR1.25</p>			
SIZE	CAGE CODE	DRAWN BY	ITEM NO.
A	3FKR5	KDANG	FMMP1101
REV			A

UNLESS OTHERWISE SPECIFIED, LEADING DIMENSIONS ARE IN INCHES DIMENSIONS IN [ ] ARE MILLIMETERS

TOLERANCES:

.X = ±.2 [ 5 ] FRACTIONS  
 .XX = ±.02 [ .5 ] ±.132  
 .XXX = ±.005 [ .13 ] ANGLES ± 1°

CABLE LENGTH TOLERANCES:

512 [305] = +1 [25] / -0  
 >12 [305] ≤ 60 [1524] = +2 [51] / -0  
 >60 [1524] ≤ 120 [3048] = +4 [102] / -0  
 >120 [3048] ≤ 300 [7620] = +6 [152] / -0  
 >300 [7620] = +5% / -0

ALL DIMENSIONS ARE FOR REFERENCE ONLY AND SUBJECT TO CHANGE WITHOUT NOTICE

THE INFORMATION CONTAINED IN THIS DRAWING IS THE SOLE PROPERTY OF INFINITE ELECTRONICS, INC. ANY REPRODUCTION IN PART OR WHOLE WITHOUT THE WRITTEN PERMISSION OF INFINITE ELECTRONICS, INC. IS PROHIBITED. THESE COMMENTS, DIMENSIONS, TOLERANCES, OR SPECIFICATIONS ARE FOR INFORMATION ONLY AND ARE NOT TO BE USED IN ACCORDANCE WITH THE EXPORT ADMINISTRATION REGULATIONS; DIVERSION CONTRARY TO U.S. LAW PROHIBITED.