

MCX Jack Commercial Grade PCB Connector .042 inch End Launch Solder Attachment



FMCN5179

Configuration

- MCX Jack Connector
- 50 Ohms
- Straight Body Geometry
- Connector Interface Types: .042 inch End Launch
- Commercial Grade Design

Features

- Operating Frequency of 6 GHz Max.
- Good VSWR of 1.45:1
- Gold Plated Phosphor Bronze Contact

Applications

- General Purpose Test
- PCB Applications

Description

MCX Jack Commercial Grade Connector Solder Attachment for .042 inch End Launch Cable, part number FMCN5179, from Fairview Microwave is in-stock and ships same day. This MCX jack connector operates up to a maximum frequency of 6 GHz and offers good VSWR of 1.45:1.

Fairview's MCX jack connector FMCN5179 datasheet specifications and outline drawing are shown in this PDF below. Our extensive offering of RF, microwave and millimeter wave connectors allows designers to configure and customize their signal connections however they like. From providing an I/O for a board design to creating a custom cable assembly configuration, Fairview Microwave has a connector solution to meet your needs. Fairview Microwave also has the expertise to build your custom cable assemblies for you and ship them same-day.

Electrical Specifications

Description	Minimum	Typical	Maximum	Units
Frequency Range	DC		6	GHz
VSWR			1.45:1	
Operating Voltage (AC)			170	Vrms
Dielectric Withstanding Voltage (AC)			750	Vrms
Insulation Resistance	1,000			MOhms
Impedance		50		Ohms

Mechanical Specifications

Size

Length	0.38 in [9.65 mm]
Width	0.25 in [6.35 mm]
Height	0.25 in [6.35 mm]
Weight	0.02 lbs [9.07 g]

Material Specifications

Description	Material	Plating
Contact	Phosphor Bronze	Gold
Insulation	PTFE	
Body	Brass	Gold

MCX Jack Commercial Grade PCB Connector .042 inch End Launch Solder Attachment



FMCN5179

Environmental Specifications

Temperature

Operating Range

-55 to +155 deg C

Compliance Certifications (see [product page](#) for current document)

Plotted and Other Data

Notes:

MCX Jack Commercial Grade PCB Connector .042 inch End Launch Solder Attachment from Fairview Microwave is in-stock and available to ship same-day. All of our RF/microwave products are available off-the-shelf from our ISO 9001:2008 certified facilities in Lewisville, Texas. Fairview Microwave is RF on-demand.

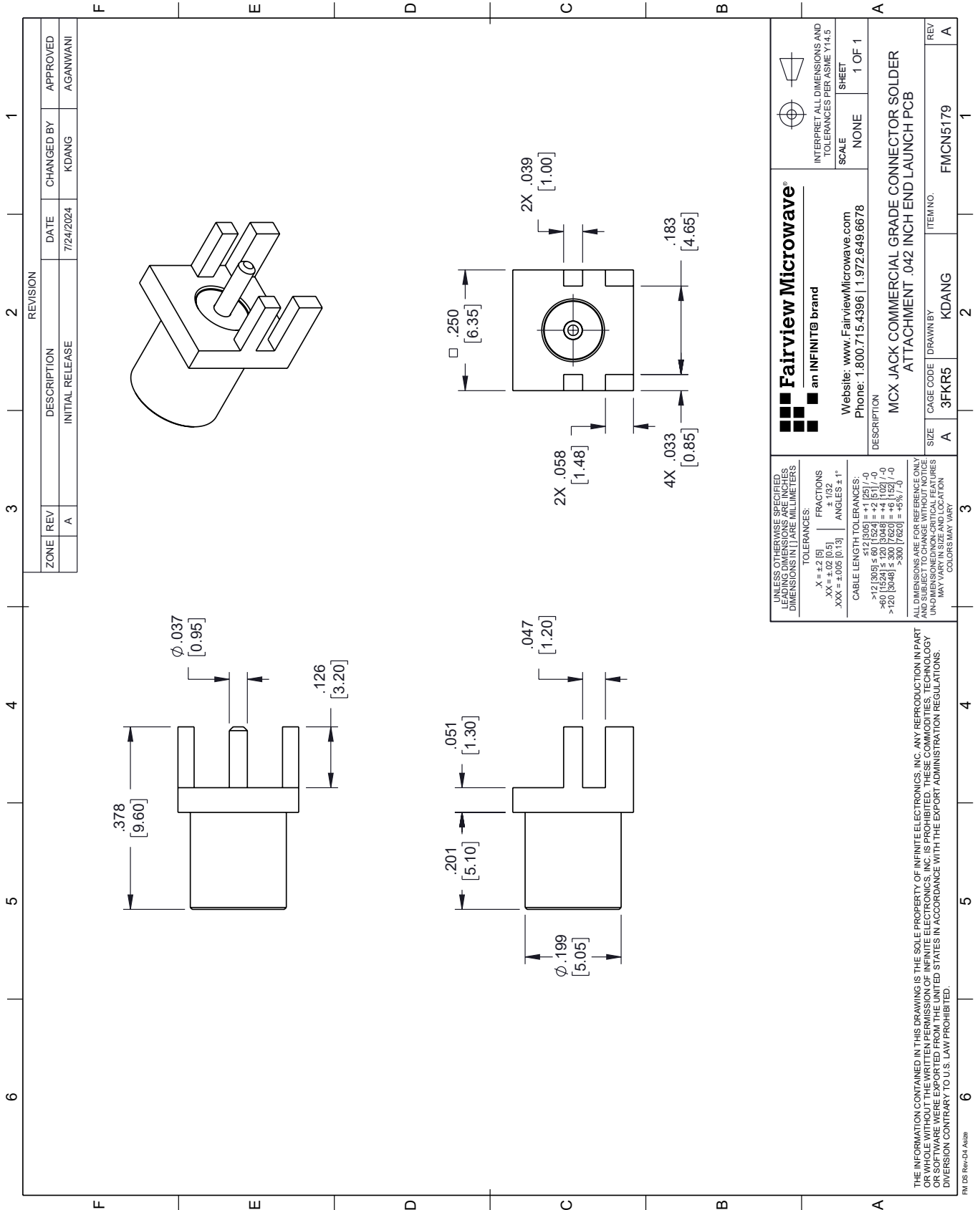
For additional information on this product, please click the following link: [MCX Jack Commercial Grade PCB Connector .042 inch End Launch Solder Attachment FMCN5179](#)

URL: <https://www.fairviewmicrowave.com/mcx-jack-.042-end-launch-pcb-connector-fmcn5179-p.aspx>

The information contained within this document is accurate to the best of our knowledge and representative of the part described herein. It may be necessary to make modifications to the part and/or the documentation of the part in order to implement improvements. Fairview Microwave reserves the right to make such changes as required. Unless otherwise stated, all specifications are nominal. Fairview Microwave does not make any representation or warranty regarding the suitability of the part described herein for any particular purpose, and Fairview Microwave does not assume liability arising out of the use of any part or document.

FMCN5179 CAD Drawing

MCX Jack Commercial Grade PCB Connector .042 inch End Launch Solder Attachment



REVISION		DATE	CHANGED BY	APPROVED
ZONE	REV	DESCRIPTION	INITIAL RELEASE	
	A			AGANWANI

Fairview Microwave®
an INFINIT® brand

Website: www.FairviewMicrowave.com
Phone: 1.800.715.4396 | 1.972.649.6678

INTERPRET ALL DIMENSIONS AND TOLERANCES PER ASME Y14.5
SCALE: NONE SHEET: 1 OF 1

DESCRIPTION: MCX JACK COMMERCIAL GRADE CONNECTOR SOLDER ATTACHMENT .042 INCH END LAUNCH PCB

SIZE: A CAGE CODE: 3FKR5 DRAWN BY: KDANG ITEM NO.: FMCN5179 REV: A

UNLESS OTHERWISE SPECIFIED, LEADING DIMENSIONS ARE IN INCHES. DIMENSIONS IN [] ARE MILLIMETERS.

TOLERANCES:
 .X = +.2 [5] FRACTIONS ± 1/32
 .XX = ±.02 [0.5] ± 1/32
 .XXX = ±.005 [0.13] ANGLES ± 1°

CABLE LENGTH TOLERANCES:
 ≤ 12 [305] ≤ 60 [1524] = +1 [25] / -0
 > 60 [1524] ≤ 120 [3048] = +4 [102] / -0
 > 120 [3048] ≤ 300 [7620] = +5% / -0

ALL DIMENSIONS ARE FOR REFERENCE ONLY. UNDIMENSIONED/NON-CRITICAL FEATURES MAY VARY IN SIZE AND LOCATION. COLORS MAY VARY.

THE INFORMATION CONTAINED IN THIS DRAWING IS THE SOLE PROPERTY OF INFINITE ELECTRONICS, INC. ANY REPRODUCTION IN PART OR WHOLE WITHOUT THE WRITTEN PERMISSION OF INFINITE ELECTRONICS, INC. IS PROHIBITED. THESE COMMODITIES, TECHNOLOGY OR SOFTWARE ARE EXPORTED FROM THE UNITED STATES IN ACCORDANCE WITH THE EXPORT ADMINISTRATION REGULATIONS. DIVISION CONTRARY TO U.S. LAW PROHIBITED.

PM DS Rev-D4 Alt2b