

VITA 67.3 Mini SMP (SMPM) Female to SMPS Female Adapter

Fairview Microwave's FMCN49821 precision Mini SMP female to SMPS female VITA 67.3 backplane adapter is part of our full line of RF components available for same-day shipping. Our Mini SMP female to SMPS female adapter has a female to female gender configuration built of durable stainless steel in a precision design. FMCN49821 Mini SMP female to SMPS female adapter operates to 63.5 GHz. The Fairview Microwave RF adapter provides excellent VSWR of 1.35 maximum.

RF adapters are often used to enable connections between two connector types that would otherwise not mate. Certain adapter configurations can also be used to protect connectors on expensive equipment where the number of connect/disconnect cycles is high. An RF, microwave or millimeter wave adapter is connected to the equipment, and the commonly changed connection is made with the adapter which can be easily replaced when it wears out after high usage; such adapters are referred to as connector savers. Fairview Microwave also offers bulkhead, panel mount, hermetically sealed, reverse polarity, and isolated ground adapter varieties to serve all of your RF, microwave and millimeter wave needs.

Electrical Specifications

Description	Min	Typ	Max	Units
Frequency Range	DC		65	GHz
VSWR			1.35:1	

Mechanical Specifications

Size	
Length	0.25 in [6.35 mm]
Width	0.19 in [4.83 mm]
Height	0.19 in [4.83 mm]
Weight	0.00 lbs [0.18 g]

Description	Connector 1	Connector 2
Type	Mini SMP Female	SMPS Female
Polarity	Standard	Standard
Mating Cycles, Min		100

Material Specifications

Description	Connector 1	Connector 2
Type	Mini SMP Female	SMPS Female
Contact Material	Beryllium Copper	Beryllium Copper
Contact Plating	Gold	Gold
Insulation Material	PTFE	PTFE
Outer Contact Material	Beryllium Copper	Beryllium Copper
Outer Contact Plating	Gold	Gold
Body Material	Beryllium Copper	Beryllium Copper
Body Plating	Gold	Gold



Configuration:

- Mini SMP Female Connector 1
- SMPS Female Connector 2
- 50 Ohm
- VITA 67.3 Design
- Straight Body Geometry

Features:

- VSWR of 1.35:1 max up to 65 GHz
- Gold Plated Beryllium Copper Contact

Applications:

- Enables Between Series Connections
- General Purpose Test
- Allows Connection In Series

Fairview Microwave
 301 Leora Ln., Suite 100
 Lewisville, TX 75056
 Tel: 1-800-715-4396 / (972) 649-6678
 Fax: (972) 649-6689
www.fairviewmicrowave.com
sales@fairviewmicrowave.com

Environmental Specifications

Temperature

Operating Range	-65 to +165 deg C
Humidity	MIL-STD-202, Method 106, Less Step 7B
Shock	MIL-STD-202, Method 213, Condition I
Vibration	MIL-STD-202, Method 204, Condition D
Thermal Shock	MIL-STD-202, Method 107, Condition B

Compliance Certifications (see [product page](#) for current document)

Plotted and Other Data

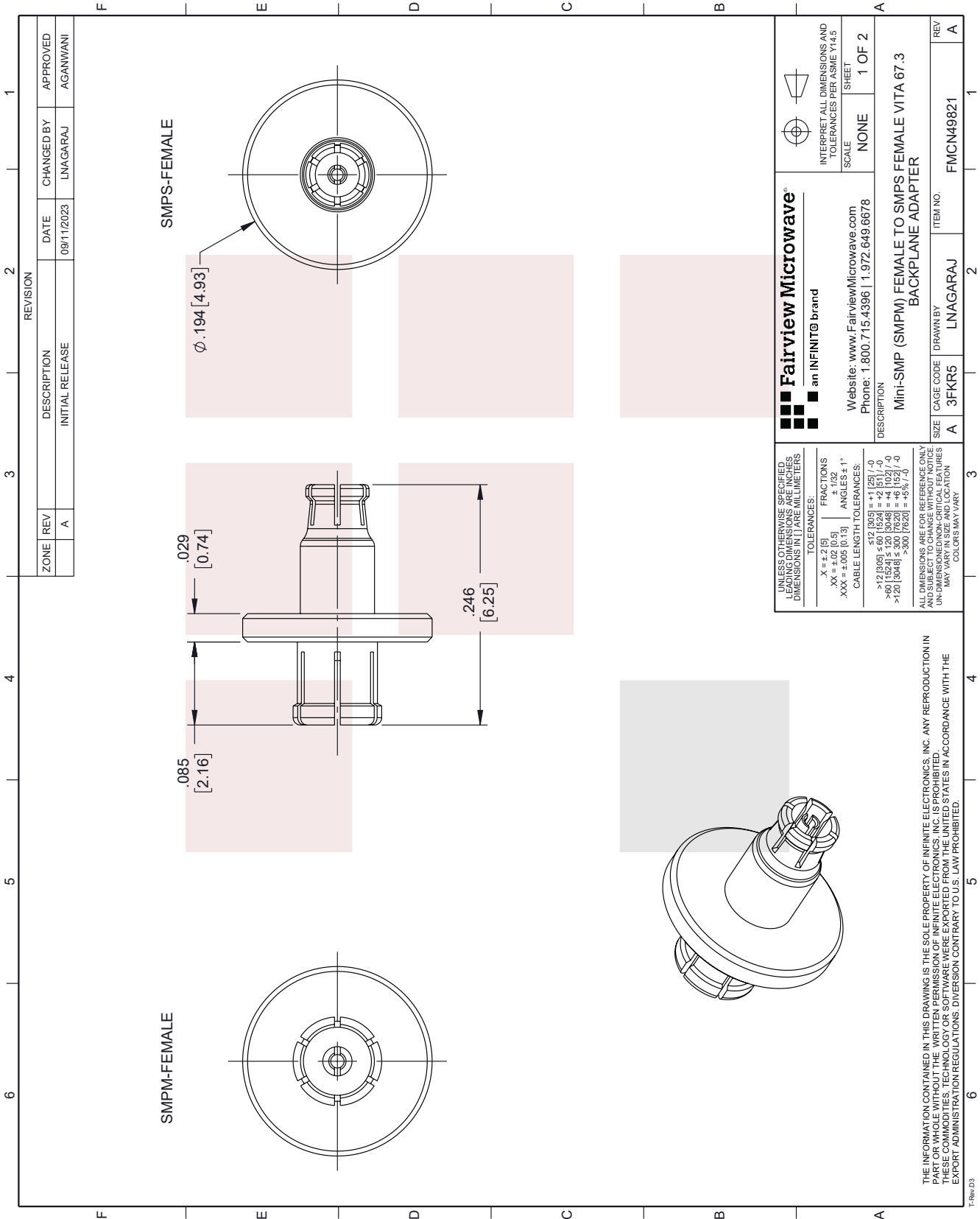
Notes:

VITA 67.3 Mini SMP (SMPM) Female to SMPS Female Adapter from Fairview Microwave is in-stock and available to ship same-day. All of our RF/microwave products are available off-the-shelf from our ISO 9001:2008 certified facilities in Lewisville, Texas. Fairview Microwave is RF on-demand.

For additional information on this product, please click the following link: [VITA 67.3 Mini SMP \(SMPM\) Female to SMPS Female Adapter FMCN49821](#)

URL: <https://www.fairviewmicrowave.com/vita-67.3-mini-smp-female-to-smps-female-adapter-fmcn49821-p.aspx>

The information contained in this document is accurate to the best of our knowledge and representative of the part described herein. It may be necessary to make modifications to the part and/or the documentation of the part, in order to implement improvements. Fairview Microwave reserves the right to make such changes as required. Unless otherwise stated, all specifications are nominal. Fairview Microwave does not make any representation or warranty regarding the suitability of the part described herein for any particular purpose, and Fairview Microwave does not assume any liability arising out of the use of any part or documentation.



REVISION		DATE	CHANGED BY	APPROVED
ZONE	REV			
	A	09/11/2023	LNAGARAJ	AGANWANI
DESCRIPTION				
INITIAL RELEASE				

 Fairview Microwave[®] an INFINIT [®] brand		 INTERPRET ALL DIMENSIONS AND TOLERANCES PER ASME Y14.5
Website: www.FairviewMicrowave.com Phone: 1.800.715.4396 1.972.649.6678	SCALE: NONE SHEET: 1 OF 2	
DESCRIPTION: Mini-SMP (SMPM) FEMALE TO SMPS FEMALE VITA 67.3 BACKPLANE ADAPTER		
SIZE: A	CAGE CODE: 3FKR5	ITEM NO.: FMCN49821
DRAWN BY: LNAGARAJ	REV: A	

UNLESS OTHERWISE SPECIFIED, LEADING DIMENSIONS ARE INCHES AND DIMENSIONS IN [] ARE MILLIMETERS.

TOLERANCES:

.X = ±.2 [5]	FRACTIONS ± 1/32
.XX = ±.02 [0.5]	ANGLES ± 1°
.XXX = ±.005 [0.13]	

CABLE LENGTH TOLERANCES:

>12 [305]	±.60 [15.24]
>6 [152]	±.30 [7.62]
>120 [3048]	±.300 [76.20]
>300 [7620]	±.45% [-0]

ALL DIMENSIONS ARE FOR REFERENCE ONLY AND SUBJECT TO CHANGE WITHOUT NOTICE. UN-DIMENSIONED NON-CRITICAL FEATURES MAY VARY IN PROPORTION. COLORS MAY VARY.

THE INFORMATION CONTAINED IN THIS DRAWING IS THE SOLE PROPERTY OF INFINITE ELECTRONICS, INC. ANY REPRODUCTION IN ANY FORM OR BY ANY MEANS WITHOUT THE WRITTEN PERMISSION OF INFINITE ELECTRONICS, INC. IS PROHIBITED. THESE COMMERCIAL TECHNOLOGY OF SOFTWARE WERE EXPORTED FROM THE UNITED STATES IN ACCORDANCE WITH THE EXPORT ADMINISTRATION REGULATIONS. DIVERSION CONTRARY TO U.S. LAW PROHIBITED.

