

RF PCB Connector, FAKRA Plug Right Angle Connector Solder Attachment Thru Hole PCB, Blue Color

RA FAKRA plug connector with solder attachment for thru hole PCB, blue color, part number FMCN44251, from Fairview Microwave is in-stock and ships same day. This FAKRA plug connector operates up to a maximum frequency of 4 GHz and offers good VSWR of 1.5:1. Its right angle body geometry facilitates connections in tight spaces.

Fairview's RA FAKRA plug connector FMCN44251 datasheet specifications and outline drawing are shown in this PDF below. Our extensive offering of RF, microwave and millimeter wave connectors allows designers to configure and customize their signal connections however they like. From providing an I/O for a board design to creating a custom cable assembly configuration, Fairview Microwave has a connector solution to meet your needs. Fairview Microwave also has the expertise to build your custom cable assemblies for you and ship them same-day.



Configuration:

- FAKRA Plug Connector
- 50 Ohms
- Right Angle Body Geometry
- Thru Hole Interface Type
- Solder Attachment

Features:

- Operating Frequency of 4 GHz Max.
- Good VSWR of 1.5:1
- Gold Plated Brass Contact

Applications:

- General Purpose Test
- PCB Applications

Electrical Specifications

| Description | Min | Typ | Max | Units |
|---------------------------|-------|-----|-------|-------|
| Frequency Range | DC | | 4 | GHz |
| VSWR | | | 1.5:1 | |
| Operating Voltage (AC) | | | 335 | Vrms |
| DWV (AC) | | | 1,000 | Vrms |
| Inner Cond. DC Resistance | | | 6 | mOhms |
| Outer Cond. DC Resistance | | | 2.5 | mOhms |
| Insulation Resistance | 1,000 | | | MOhms |

Mechanical Specifications

| | |
|-------------|--------------------|
| Size | |
| Length | 0.031 in [0.79 mm] |
| Width/Dia. | 0.37 in [9.40 mm] |
| Height | 0.433 in [11 mm] |
| Weight | 0.005 lbs [2.27 g] |

Material Specifications

| Description | Material | Plating |
|-----------------|----------|---------|
| Contact | Brass | Gold |
| Insulation | PTFE | |
| Outer Conductor | Brass | Nickel |
| Body | Plastic | |

Fairview Microwave
301 Leora Ln., Suite 100
Lewisville, TX 75056
Tel: 1-800-715-4396 / (972) 649-6678
Fax: (972) 649-6689
www.fairviewmicrowave.com
sales@fairviewmicrowave.com

Environmental Specifications

Temperature

Operating Range -40 to +85 deg C

Compliance Certifications (see [product page](#) for current document)

Plotted and Other Data

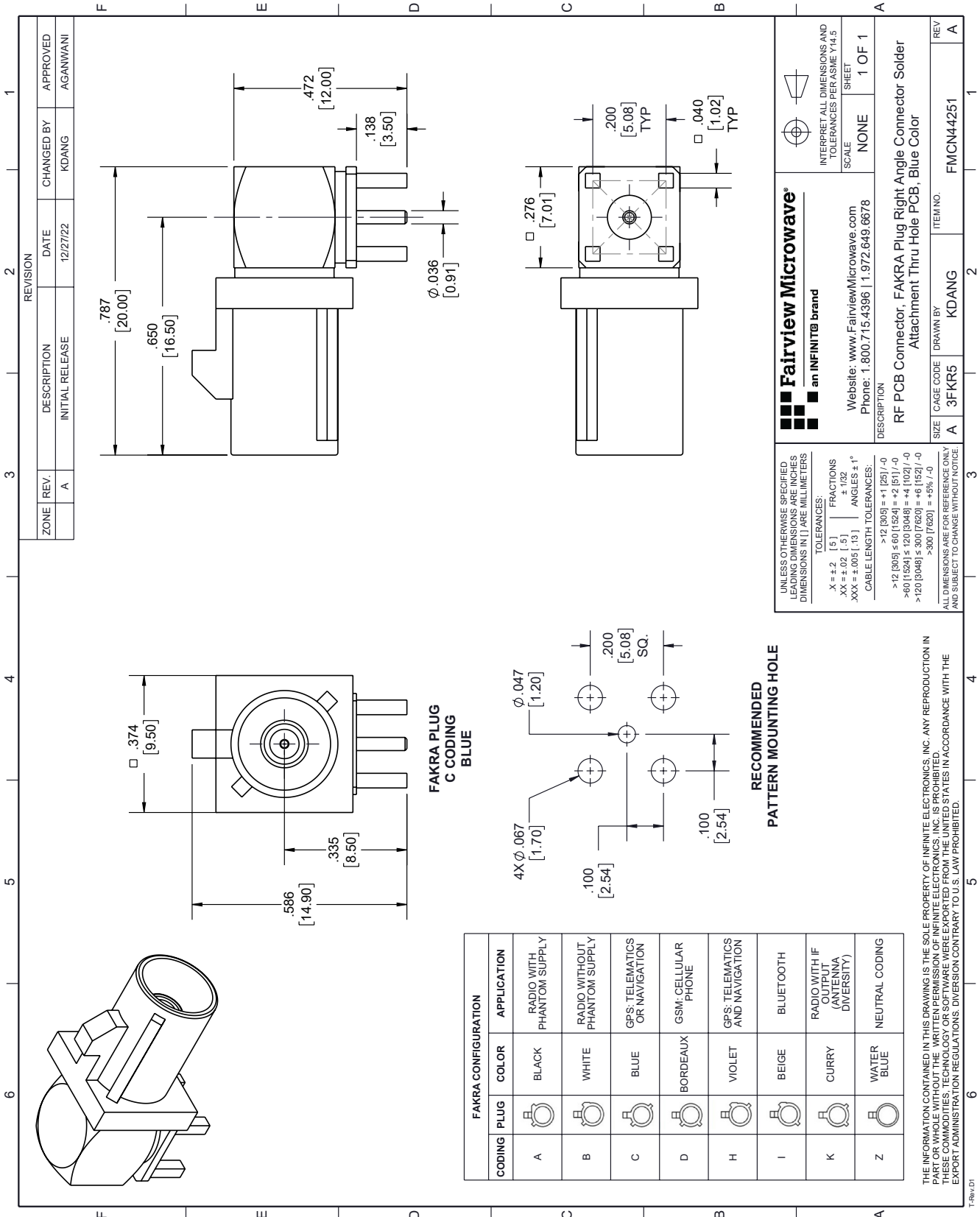
Notes:

RF PCB Connector, FAKRA Plug Right Angle Connector Solder Attachment Thru Hole PCB, Blue Color from Fairview Microwave is in-stock and available to ship same-day. All of our RF/microwave products are available off-the-shelf from our ISO 9001:2008 certified facilities in Lewisville, Texas. Fairview Microwave is RF on-demand.

For additional information on this product, please click the following link: [RF PCB Connector, FAKRA Plug Right Angle Connector Solder Attachment Thru Hole PCB, Blue Color FMCN44251](#)

URL: <https://www.fairviewmicrowave.com/fakra-plug-thru-hole-pcb-connector-fmcn44251-p.aspx>

The information contained in this document is accurate to the best of our knowledge and representative of the part described herein. It may be necessary to make modifications to the part and/or the documentation of the part, in order to implement improvements. Fairview Microwave reserves the right to make such changes as required. Unless otherwise stated, all specifications are nominal. Fairview Microwave does not make any representation or warranty regarding the suitability of the part described herein for any particular purpose, and Fairview Microwave does not assume any liability arising out of the use of any part or documentation.



| ZONE | REV. | DESCRIPTION | DATE | CHANGED BY | APPROVED |
|------|------|-----------------|----------|------------|----------|
| | A | INITIAL RELEASE | 12/27/22 | KDANG | AGANWANI |

Fairview Microwave
an INFINIT[®] brand

Website: www.FairviewMicrowave.com
Phone: 1-800-715-4396 | 1-972-649-6678

INTERPRET ALL DIMENSIONS AND TOLERANCES PER ASME Y14.5
SCALE: NONE
SHEET: 1 OF 1

DESCRIPTION:
RF PCB Connector, FAKRA Plug Right Angle Connector Solder Attachment Thru Hole PCB, Blue Color

UNLESS OTHERWISE SPECIFIED, DIMENSIONS ARE IN INCHES AND DIMENSIONS IN LARGE MILLIMETERS

TOLERANCES:
 .X = ±.2 [5]
 .XX = ±.02 [.5]
 .XXX = ±.005 [.13]
 FRACTIONS ± 1/32
 ANGLES ± 1°

CABLE LENGTH TOLERANCES:
 >12 [305] ≤ 60 [1524] = +1 [25] / -0
 >60 [1524] ≤ 120 [3048] = +4 [102] / -0
 >120 [3048] ≤ 300 [7620] = +6 [152] / -0
 >300 [7620] = +5% / -0

ALL DIMENSIONS ARE FOR REFERENCE ONLY AND SUBJECT TO CHANGE WITHOUT NOTICE.

**FAKRA PLUG
C CODING
BLUE**

**RECOMMENDED
PATTERN MOUNTING HOLE**

| FAKRA CONFIGURATION | | APPLICATION |
|---------------------|------|-------------|
| CODING | PLUG | COLOR |
| A | | BLACK |
| B | | WHITE |
| C | | BLUE |
| D | | BORDEAUX |
| H | | VIOLET |
| I | | BEIGE |
| K | | CURRY |
| Z | | WATER BLUE |

THE INFORMATION CONTAINED IN THIS DRAWING IS THE SOLE PROPERTY OF INFINITE ELECTRONICS, INC. ANY REPRODUCTION IN WHOLE OR IN PART WITHOUT THE WRITTEN PERMISSION OF INFINITE ELECTRONICS, INC. IS PROHIBITED. THESE COMMODITY TECHNOLOGY OF SOFTWARE WERE EXPORTED FROM THE UNITED STATES IN ACCORDANCE WITH THE EXPORT ADMINISTRATION REGULATIONS. DIVERSION CONTRARY TO U.S. LAW PROHIBITED.