

## Low PIM 4.1/9.5 Mini DIN Female to 4.3-10 Male Cable TFT-5G-402 Coax Using Times Microwave Components



### FMCA2460

#### Configuration

- Connector 1: 4.1/9.5 Mini DIN Female
- Connector 2: 4.3-10 Male
- Cable Type: TFT-5G-402
- Coax Flex Type: Flexible

#### Features

- Max Frequency 5.8 GHz
- Low PIM: -160 dBc Max
- Shielding Effectivity > 80 dB
- 76% Phase Velocity
- Double Shielded
- FEP Jacket
- 500 Mating Cycles

#### Applications

- General Purpose
- Laboratory Use
- Low PIM Applications
- Indoor and Outdoor Use
- Plenum Rated Applications

#### Description

The 4.1/9.5 Mini DIN female to 4.3-10 male cable using TFT-5G-402 coax, part number FMCA2460, from Fairview Microwave is in-stock and ships same day. This Fairview 4.1/9.5 Mini DIN to 4.3-10 cable assembly has a female to male gender configuration with 50 ohm flexible TFT-5G-402 coax. Fairview Microwave's flexible RF cable assemblies are ideal for applications where tight bends and continual flexure are required. Our low PIM design offers excellent passive intermodulation performance with PIM levels better than -160 dBc. The FMCA2460 4.1/9.5 Mini DIN female to 4.3-10 male cable assembly operates to 5.8 GHz. The double shielding of this Fairview cable assembly provides excellent shielding effectiveness of better than 80 dB.

Custom versions of most RF cable assemblies can be built and shipped same day. Custom cable assembly lengths can be obtained by specifying the desired length on the web site at time of order or by contacting a sales representative. Other RF cable assembly value added services including connector orientation or clocking, heat shrink booting and labeling are also available. RF testing can also be performed to document the electrical performance of your cable assembly.

#### Electrical Specifications

Description	Minimum	Typical	Maximum	Units
Frequency Range	DC		5.8	GHz
VSWR			1.4:1	
Velocity of Propagation		76		%
RF Shielding	80			dB
Passive Intermodulation			-160	dBc
IM3 (2x43dBm Tones) at 850 MHz or 1900 MHz				

Low PIM 4.1/9.5 Mini DIN Female to 4.3-10 Male Cable  
TFT-5G-402 Coax Using Times Microwave Components



**FMCA2460**

**Electrical Specifications**

Description	Minimum	Typical	Maximum	Units
Capacitance		26.7 [87.6]		pF/ft [pF/m]

**Specifications by Frequency**

Description	F1	F2	F3	F4	F5	Units
Frequency	0.25	0.5	1	2.5	5.8	GHz
Insertion Loss (Typ.)	0.057	0.083	0.117	0.19	0.295	dB/ft
	0.19	0.27	0.38	0.62	0.97	dB/m

Electrical Specification Notes:

Insertion Loss does not include the loss of the connectors. Insertion Loss is estimated as  $0.1 \cdot \sqrt{FGHz}$  dB per connector.

**Mechanical Specifications**

**Cable Assembly**

Width/Diameter 0.866 in [22 mm]

**Cable**

Cable Type TFT-5G-402  
 Impedance 50 Ohms  
 Inner Conductor Type Solid  
 Inner Conductor Material and Plating Copper  
 Dielectric Type PTFE  
 Number of Shields 2  
 Jacket Material FEP, Blue  
 Jacket Diameter 0.16 in [4.06 mm]  
 One Time Minimum Bend Radius 0.75 in [19.05 mm]

Low PIM 4.1/9.5 Mini DIN Female to 4.3-10 Male Cable  
TFT-5G-402 Coax Using Times Microwave Components



**FMCA2460**

**Connectors**

Description	Connector 1	Connector 2
Type	4.1/9.5 Mini DIN Female	4.3-10 Male
Impedance	50 Ohms	50 Ohms
Configuration	Straight	Straight
Mating Cycles	500	500
Contact Material and Plating	Phosphor Bronze, Silver	Brass, Silver
Contact Plating Specification	200 µin	200 µin
Dielectric Type	PTFE	PTFE
Outer Conductor Material and Plating	Brass, Tri-Metal	
Outer Conductor Plating Specification	80 µin	
Body Material and Plating	Brass, Tri-Metal	Brass, Tri-Metal
Body Plating Specification	80 µin	80 µin
Coupling Nut Material and Plating		Brass, Tri-Metal
Coupling Nut Plating Specification		80 µin
Torque		44 in-lbs 4.97 Nm

**Environmental Specifications**

Operating Range Temperature -55 to +85 deg C

**Compliance Certifications** (see [product page](#) for current document)

**Plotted and Other Data**

Notes:

Low PIM 4.1/9.5 Mini DIN Female to 4.3-10 Male Cable  
TFT-5G-402 Coax Using Times Microwave Components



**FMCA2460**

**Typical Performance Data**

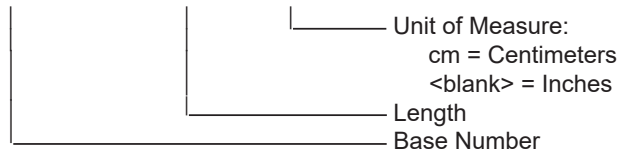
**How to Order**

Part Number Configuration:

**FMCA2460**

- **xx**

**uu**



Example: FMCA2460-12 = 12 inches long cable  
FMCA2460-100cm = 100 cm long cable

Low PIM 4.1/9.5 Mini DIN Female to 4.3-10 Male Cable TFT-5G-402 Coax Using Times Microwave Components from Fairview Microwave is in-stock and available to ship same-day. All of our RF/microwave products are available off-the-shelf from our ISO 9001:2008 certified facilities in Lewisville, Texas. Fairview Microwave is RF on-demand.

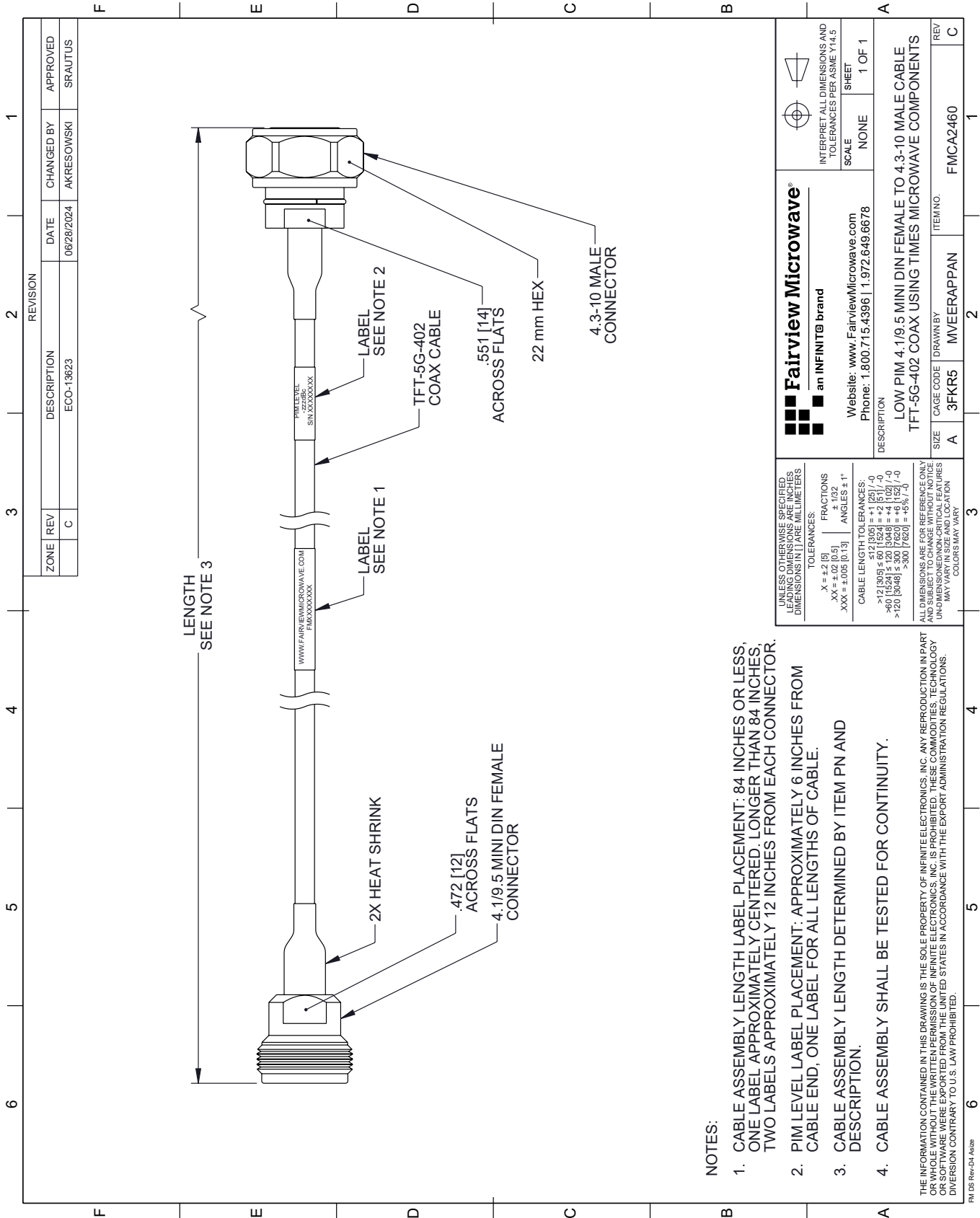
For additional information on this product, please click the following link: [Low PIM 4.1/9.5 Mini DIN Female to 4.3-10 Male Cable TFT-5G-402 Coax Using Times Microwave Components FMCA2460](https://www.fairviewmicrowave.com/product/rf-cable-assemblies/low-pim-4.1-9.5-mini-din-female-4.3-10-male-cable-tft-5g-402-coax-fmca2460)

URL: <https://www.fairviewmicrowave.com/product/rf-cable-assemblies/low-pim-4.1-9.5-mini-din-female-4.3-10-male-cable-tft-5g-402-coax-fmca2460.html>

The information contained within this document is accurate to the best of our knowledge and representative of the part described herein. It may be necessary to make modifications to the part and/or the documentation of the part in order to implement improvements. Fairview Microwave reserves the right to make such changes as required. Unless otherwise stated, all specifications are nominal. Fairview Microwave does not make any representation or warranty regarding the suitability of the part described herein for any particular purpose, and Fairview Microwave does not assume liability arising out of the use of any part or document.

# FMCA2460 CAD Drawing

Low PIM 4.1/9.5 Mini DIN Female to 4.3-10 Male Cable TFT-5G-402 Coax Using Times Microwave Components



**NOTES:**

1. CABLE ASSEMBLY LABEL PLACEMENT: 84 INCHES OR LESS, ONE LABEL APPROXIMATELY CENTERED, LONGER THAN 84 INCHES, TWO LABELS APPROXIMATELY 12 INCHES FROM EACH CONNECTOR.
2. PIM LEVEL LABEL PLACEMENT: APPROXIMATELY 6 INCHES FROM CABLE END, ONE LABEL FOR ALL LENGTHS OF CABLE.
3. CABLE ASSEMBLY LENGTH DETERMINED BY ITEM PN AND DESCRIPTION.
4. CABLE ASSEMBLY SHALL BE TESTED FOR CONTINUITY.

THE INFORMATION CONTAINED IN THIS DRAWING IS THE SOLE PROPERTY OF INFINITE ELECTRONICS, INC. ANY REPRODUCTION IN PART OR WHOLE WITHOUT THE WRITTEN PERMISSION OF INFINITE ELECTRONICS, INC. IS PROHIBITED. THESE COMMODITIES, TECHNOLOGY OR SOFTWARE WERE EXPORTED FROM THE UNITED STATES IN ACCORDANCE WITH THE EXPORT ADMINISTRATION REGULATIONS. DIVISION CONTRARY TO U.S. LAW PROHIBITED.

<p><b>Fairview Microwave</b> an INFINITB brand</p> <p>Website: <a href="http://www.FairviewMicrowave.com">www.FairviewMicrowave.com</a> Phone: 1.800.715.4396   1.972.649.6678</p>		<p>INTERPRET ALL DIMENSIONS AND TOLERANCES PER ASME Y14.5</p> <p>SCALE: NONE</p> <p>SHEET: 1 OF 1</p>
<p>UNLESS OTHERWISE SPECIFIED, LEADING DIMENSIONS ARE IN INCHES, DIMENSIONS IN [ ] ARE MILLIMETERS.</p> <p>TOLERANCES:          .X = ±.2 [5]          .XX = ±.02 [0.5]          .XXX = ±.005 [0.13]          FRACTIONS: ±.1/32          ANGLES: ± 1°</p> <p>CABLE LENGTH TOLERANCES:          ≤ 12 [305] ±.60 [15.24] = ±.2 [5] / -0          &gt; 12 [305] ≤ 60 [1524] = ±.4 [10.2] / -0          &gt; 60 [1524] ≤ 120 [3048] = ±.4 [10.2] / -0          &gt; 120 [3048] ≤ 300 [7620] = ±.6 [15.24] / -0          &gt; 300 [7620] = ±.8 [20.32] / -0</p> <p>ALL DIMENSIONS ARE FOR REFERENCE ONLY. UNDIMENSIONED/NON-CRITICAL FEATURES MAY VARY IN SIZE AND LOCATION. COLORS MAY VARY.</p>		
<p>DESCRIPTION</p> <p>LOW PIM 4.1/9.5 MINI DIN FEMALE TO 4.3-10 MALE CABLE TFT-5G-402 COAX USING TIMES MICROWAVE COMPONENTS</p>	<p>SIZE</p> <p>A</p>	<p>REV</p> <p>C</p>
<p>ITEM NO.</p> <p>FMCA2460</p>	<p>DRAWN BY</p> <p>MVEERAPPAN</p>	<p>1</p>
<p>3FKR5</p>	<p>3</p>	<p>2</p>
<p>1</p>	<p>4</p>	<p>5</p>
<p>6</p>	<p>6</p>	<p>6</p>