

SSMA Male to SMA Male Cable RG-316 Coax



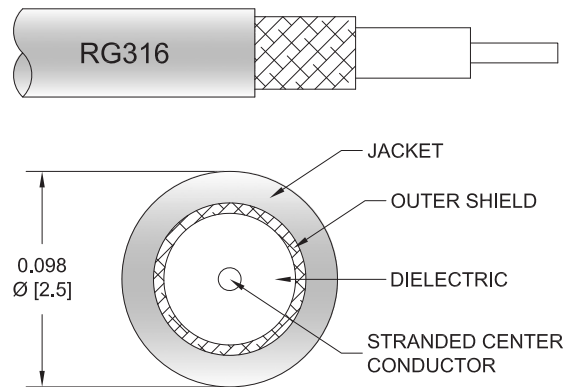
FMCA10068

Configuration

- Connector 1: SSMA Male
- Connector 2: SMA Male
- Cable Type: RG-316
- Coax Flex Type: Flexible

Features

- Max Frequency 3 GHz
- 69% Phase Velocity
- FEP Jacket



Applications

- General Purpose
- Laboratory Use

Description

The SSMA male to SMA male cable using RG-316 coax, part number FMCA10068, from Fairview Microwave is in-stock and ships same day. This Fairview SSMA to SMA cable assembly has a male to male gender configuration with 50 ohm flexible RG-316 coax. Fairview Microwave's flexible RF cable assemblies are ideal for applications where tight bends and continual flexure are required. The FMCA10068 SSMA male to SMA male cable assembly operates to 3 GHz.

Custom versions of most RF cable assemblies can be built and shipped same day. Custom cable assembly lengths can be obtained by specifying the desired length on the web site at time of order or by contacting a sales representative. Other RF cable assembly value added services including connector orientation or clocking, heat shrink booting and labeling are also available. RF testing can also be performed to document the electrical performance of your cable assembly.

Electrical Specifications

Description	Minimum	Typical	Maximum	Units
Frequency Range	DC		3	GHz
VSWR			1.4:1	
Velocity of Propagation		69		%
Operating Voltage (AC)			250	Vrms
Jacket Spark			2,000	Vrms

Specifications by Frequency

SSMA Male to SMA Male Cable RG-316 Coax



FMCA10068

Part Number	Length	Description	F1	F2	F3	F4	F5	Units	Weight (lbs)
			Frequency		100	250	500	1000	
FMCA10068	Custom Lengths Available	Insertion Loss (Typ.)	0.11	0.16	0.24	0.38	0.58	dB/ft	
			0.37	0.53	0.79	1.25	1.91	dB/m	
FMCA10068-12	12 Inch	Insertion Loss (Typ.)	0.46	0.51	0.59	0.73	0.93	dB	0.033
FMCA10068-24	24 Inch	Insertion Loss (Typ.)	0.57	0.67	0.83	1.11	1.51	dB	0.042
FMCA10068-36	36 Inch	Insertion Loss (Typ.)	0.68	0.83	1.07	1.49	2.09	dB	0.051
FMCA10068-48	48 Inch	Insertion Loss (Typ.)	0.79	0.99	1.31	1.87	2.67	dB	0.06
FMCA10068-72	72 Inch	Insertion Loss (Typ.)	1.01	1.31	1.78	2.63	3.83	dB	0.078

The insertion loss data for the base model does not include loss due to the connectors. Each length includes insertion loss due to the connectors.

Loss due to Connector 1:	0.25 dB
Loss due to Connector 2:	0.1 dB
Base Weight:	0.033 pounds
Additional Weight per Inch:	0.32917 pounds

Mechanical Specifications

Cable Assembly

Width/Diameter	0.5 in [12.7 mm]
Weight	0.033 lbs [14.97 g]

Cable

Cable Type	RG-316
Impedance	50 Ohms
Inner Conductor Type	Stranded
Inner Conductor Material and Plating	Copper Clad Steel, Silver
Dielectric Type	PTFE
Number of Shields	1
Shield Layer 1	Silver Plated Copper Braid
Jacket Material	FEP, Tan
Jacket Diameter	0.102 in [2.59 mm]

SSMA Male to SMA Male Cable RG-316 Coax



FMCA10068

Connectors

Description	Connector 1	Connector 2
Type	SSMA Male	SMA Male
Specification	MIL-STD-348A	
Impedance	50 Ohms	50 Ohms
Configuration	Straight	Straight
Contact Material and Plating	Brass, Gold	Brass, Gold
Contact Plating Specification	50 µin minimum	15 µin minimum
Dielectric Type	PTFE	PTFE
Body Material and Plating	Brass, Nickel	Brass, Nickel
Body Plating Specification	100 µin minimum	200 µin minimum
Coupling Nut Material and Plating	Brass, Nickel	Brass, Nickel
Coupling Nut Plating Specification	100 µin minimum	200 µin minimum
Hex Size	1/4 inch	

Environmental Specifications

Operating Range Temperature -40 to +125 deg C

Compliance Certifications (see [product page](#) for current document)

Plotted and Other Data

Notes:

SSMA Male to SMA Male Cable RG-316 Coax



FMCA10068

Typical Performance Data

How to Order

Part Number Configuration:

FMCA10068

- **xx**

uu

Unit of Measure:

cm = Centimeters

<blank> = Inches

Length

Base Number

Example: FMCA10068-12 = 12 inches long cable
FMCA10068-100cm = 100 cm long cable

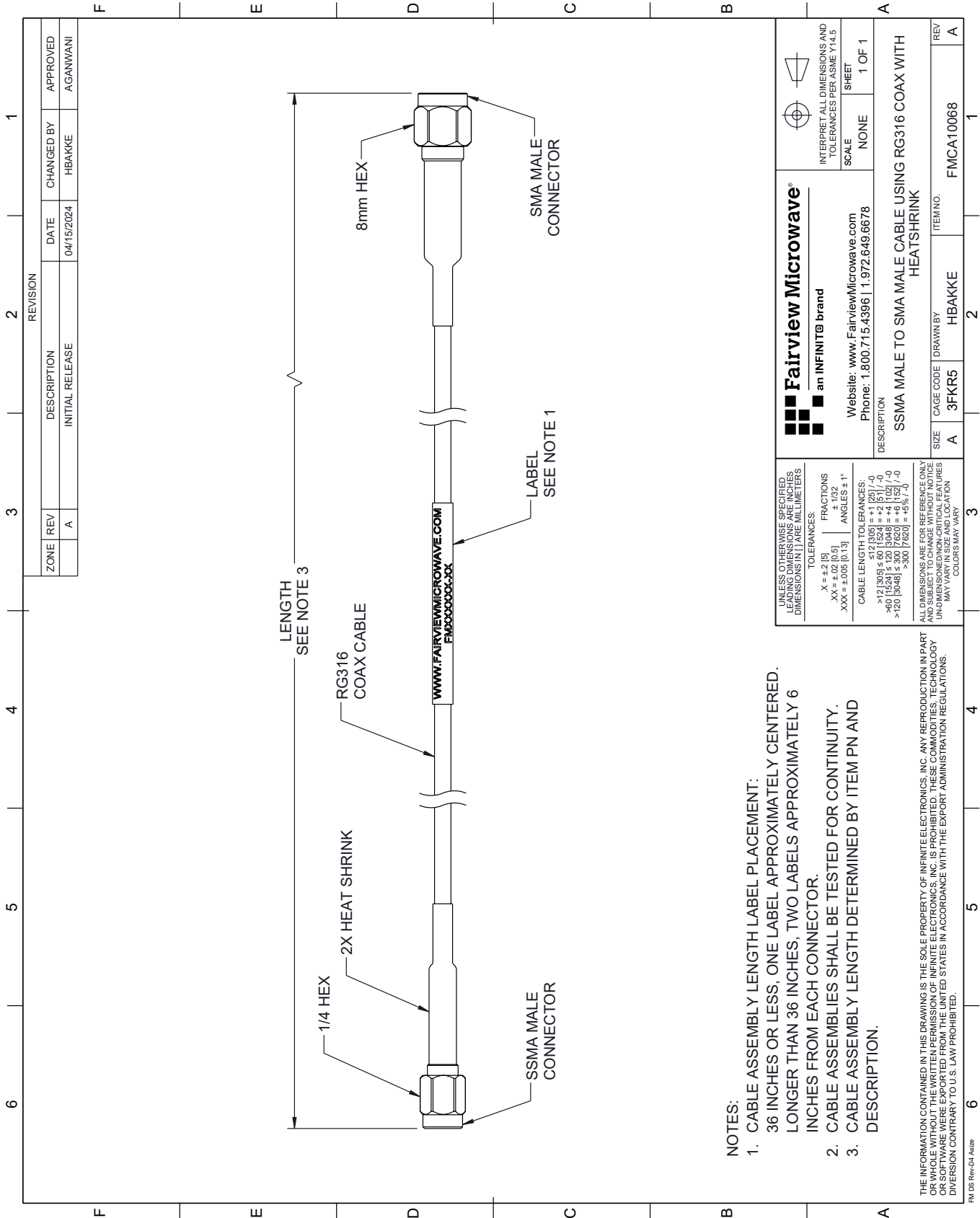
SSMA Male to SMA Male Cable RG-316 Coax from Fairview Microwave is in-stock and available to ship same-day. All of our RF/microwave products are available off-the-shelf from our ISO 9001:2008 certified facilities in Lewisville, Texas. Fairview Microwave is RF on-demand.

For additional information on this product, please click the following link: [SSMA Male to SMA Male Cable RG-316 Coax FMCA10068](https://www.fairviewmicrowave.com/ssma-male-to-sma-male-cable-rg-316-coax-fmca10068)

URL: <https://www.fairviewmicrowave.com/ssma-male-to-sma-male-cable-rg-316-coax-fmca10068-p.aspx>

The information contained within this document is accurate to the best of our knowledge and representative of the part described herein. It may be necessary to make modifications to the part and/or the documentation of the part in order to implement improvements. Fairview Microwave reserves the right to make such changes as required. Unless otherwise stated, all specifications are nominal. Fairview Microwave does not make any representation or warranty regarding the suitability of the part described herein for any particular purpose, and Fairview Microwave does not assume liability arising out of the use of any part or document.

FMCA10068 CAD Drawing
 SSMA Male to SMA Male Cable RG-316 Coax



 Fairview Microwave® an INFINIT® brand Website: www.FairviewMicrowave.com Phone: 1.800.715.4396 1.972.649.6678		 INTERPRET ALL DIMENSIONS AND TOLERANCES PER ASME Y14.5 SCALE: NONE SHEET: 1 OF 1
DESCRIPTION: SSMA MALE TO SMA MALE CABLE USING RG316 COAX WITH HEATSHRINK		
SIZE: A CAGE CODE: 3FKR5 DRAWN BY: HBAKKE ITEM NO.: FMCA10068	REV: A	REV: A

UNLESS OTHERWISE SPECIFIED, LEADING DIMENSIONS ARE IN INCHES AND TRAILING DIMENSIONS ARE IN MILLIMETERS.

TOLERANCES:
 .X = ±.2 [5] FRACTIONS ± 1/32
 .XX = ±.02 [0.5] ANGLES ± 1°
 .XXX = ±.005 [0.13]

CABLE LENGTH TOLERANCES:
 <12 [305] ±.60 [15.24] = ±.1 [2.5] / -0
 >12 [305] ≤.60 [15.24] = ±.2 [5] / -0
 >60 [1524] ≤.120 [3048] = ±.4 [102] / -0
 >120 [3048] ≤.300 [7620] = ±.8 [20] / -0

ALL DIMENSIONS ARE FOR REFERENCE ONLY. UNDIMENSIONED/NON-CRITICAL FEATURES MAY VARY IN SIZE AND LOCATION. COLORS MAY VARY.

- NOTES:
- CABLE ASSEMBLY LENGTH LABEL PLACEMENT: 36 INCHES OR LESS, ONE LABEL APPROXIMATELY CENTERED, LONGER THAN 36 INCHES, TWO LABELS APPROXIMATELY 6 INCHES FROM EACH CONNECTOR.
 - CABLE ASSEMBLIES SHALL BE TESTED FOR CONTINUITY.
 - CABLE ASSEMBLY LENGTH DETERMINED BY ITEM PN AND DESCRIPTION.

THE INFORMATION CONTAINED IN THIS DRAWING IS THE SOLE PROPERTY OF INFINITE ELECTRONICS, INC. ANY REPRODUCTION IN PART OR WHOLE WITHOUT THE WRITTEN PERMISSION OF INFINITE ELECTRONICS, INC. IS PROHIBITED. THESE COMMODITIES, TECHNOLOGY OR SOFTWARE WERE EXPORTED FROM THE UNITED STATES IN ACCORDANCE WITH THE EXPORT ADMINISTRATION REGULATIONS. DIVISION CONTRARY TO U.S. LAW PROHIBITED.

FM DS Rev-D4 Alt2b