

Low Loss RA QMA Male to RP SMA
Female Cable LMR-195-UF Coax



FMCA100270

Configuration

- Connector 1: QMA Male Right Angle
- Connector 2: SMA Female Reverse Polarity
- Cable Type: LMR-195-UF
- Coax Flex Type: Flexible

Features

- Max Frequency 8 GHz
- Shielding Effectivity > 90 dB
- 74% Phase Velocity
- Double Shielded
- TPE Jacket

Applications

- General Purpose
- Laboratory Use

Description

The RA QMA male to RP SMA female cable using LMR-195-UF coax, part number FMCA100270, from Fairview Microwave is in-stock and ships same day. This Fairview QMA to reverse polarity SMA cable assembly has a male to female gender configuration with 50 ohm flexible LMR-195-UF coax. Fairview Microwave's flexible RF cable assemblies are ideal for applications where tight bends and continual flexure are required. The FMCA100270 QMA male to reverse polarity SMA female cable assembly operates to 8 GHz. The right angle QMA interface on the LMR-195-UF cable allows for easier connections in tight spaces. The double shielding of this Fairview cable assembly provides excellent shielding effectiveness of better than 90 dB.

Custom versions of most RF cable assemblies can be built and shipped same day. Custom cable assembly lengths can be obtained by specifying the desired length on the web site at time of order or by contacting a sales representative. Other RF cable assembly value added services including connector orientation or clocking, heat shrink booting and labeling are also available. RF testing can also be performed to document the electrical performance of your cable assembly.

Electrical Specifications

Description	Minimum	Typical	Maximum	Units
Frequency Range	DC		8	GHz
VSWR			1.4:1	
Velocity of Propagation		74		%
RF Shielding	90			dB
Group Delay		1.27 [4.17]		ns/ft [ns/m]
Capacitance		25.4 [83.33]		pF/ft [pF/m]
Inductance		0.064 [0.21]		uH/ft [uH/m]
DC Resistance Inner Conductor		9.5 [31.17]		Ohms/1000ft [Ohms/Km]
DC Resistance Outer Conductor		4.9 [16.08]		Ohms/1000ft [Ohms/Km]

Low Loss RA QMA Male to RP SMA
Female Cable LMR-195-UF Coax



FMCA100270

Electrical Specifications

Description	Minimum	Typical	Maximum	Units
Jacket Spark			3,000	Vrms

Specifications by Frequency

Part Number	Length	Description	F1	F2	F3	F4	F5	Units	Weight (lbs)
			Frequency					MHz	
FMCA100270	Custom Lengths Available	Insertion Loss (Typ.)	0.068	0.097	0.139	0.226	0.356	dB/ft	
			0.23	0.32	0.46	0.75	1.17	dB/m	
FMCA100270-12	12 Inch	Insertion Loss (Typ.)	0.37	0.4	0.44	0.53	0.66	dB	0.052
FMCA100270-24	24 Inch	Insertion Loss (Typ.)	0.44	0.5	0.58	0.76	1.02	dB	0.073
FMCA100270-36	36 Inch	Insertion Loss (Typ.)	0.51	0.6	0.72	0.98	1.37	dB	0.094
FMCA100270-60	60 Inch	Insertion Loss (Typ.)	0.64	0.79	1	1.43	2.08	dB	0.136
FMCA100270-300	300 Inch	Insertion Loss (Typ.)	2	2.73	3.78	5.95	9.2	dB	0.556

The insertion loss data for the base model does not include loss due to the connectors. Each length includes insertion loss due to the connectors.

Loss due to Connector 1:	0.1 dB
Loss due to Connector 2:	0.1 dB
Base Weight:	0.052 pounds
Additional Weight per Inch:	0.00175 pounds

Electrical Specification Notes:
Values at 25°C, sea level.

Mechanical Specifications

Cable Assembly

Width/Diameter	0.5 in [12.7 mm]
Weight	0.052 lbs [23.59 g]

Cable

Cable Type	LMR-195-UF
Impedance	50 Ohms
Inner Conductor Type	Stranded
Inner Conductor Material and Plating	Copper
Dielectric Type	Foam PE
Number of Shields	2
Shield Layer 1	Aluminum Tape
Shield Layer 2	Tinned Copper
Jacket Material	TPE, Black
Jacket Diameter	0.195 in [4.95 mm]
One Time Minimum Bend Radius	0.5 in [12.7 mm]
Repeated Minimum Bend Radius	2 in [50.8 mm]
Bending Moment	0.1 lbs-ft [0.14 N-m]
Flat Plate Crush	10 lbs/in [0.18 Kg/mm]
Tensile Strength	40 lbs [18.14 Kg]

Low Loss RA QMA Male to RP SMA
Female Cable LMR-195-UF Coax



FMCA100270

Connectors

Description	Connector 1	Connector 2
Type	QMA Male Right Angle	SMA Female Reverse Polarity
Specification		MIL-STD-348A
Impedance	50 Ohms	50 Ohms
Configuration	Right Angle	Straight
Contact Material and Plating	Brass, Gold	Gold
Contact Plating Specification		MIL-G-45204
Dielectric Type	PTFE	PTFE
Outer Conductor Material and Plating	Phosphor Bronze, Tri-Metal	
Body Material and Plating	Brass, Tri-Metal	Brass, Nickel
Body Plating Specification		QQ-N-290

Environmental Specifications

Operating Range Temperature -40 to +85 deg C

Compliance Certifications (see [product page](#) for current document)

Plotted and Other Data

Notes:
Values at 25°C, sea level.

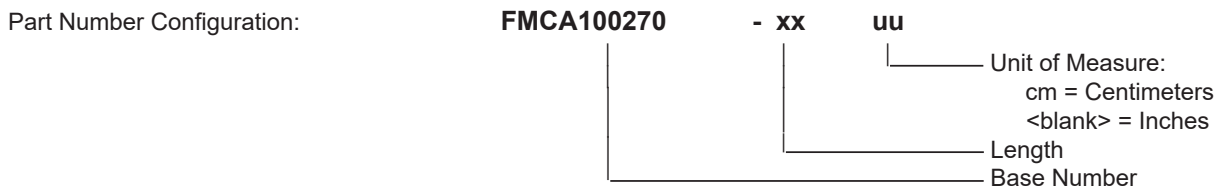
Low Loss RA QMA Male to RP SMA Female Cable LMR-195-UF Coax



FMCA100270

Typical Performance Data

How to Order



Example: FMCA100270-12 = 12 inches long cable
FMCA100270-100cm = 100 cm long cable

Low Loss RA QMA Male to RP SMA Female Cable LMR-195-UF Coax from Fairview Microwave is in-stock and available to ship same-day. All of our RF/microwave products are available off-the-shelf from our ISO 9001:2008 certified facilities in Lewisville, Texas. Fairview Microwave is RF on-demand.

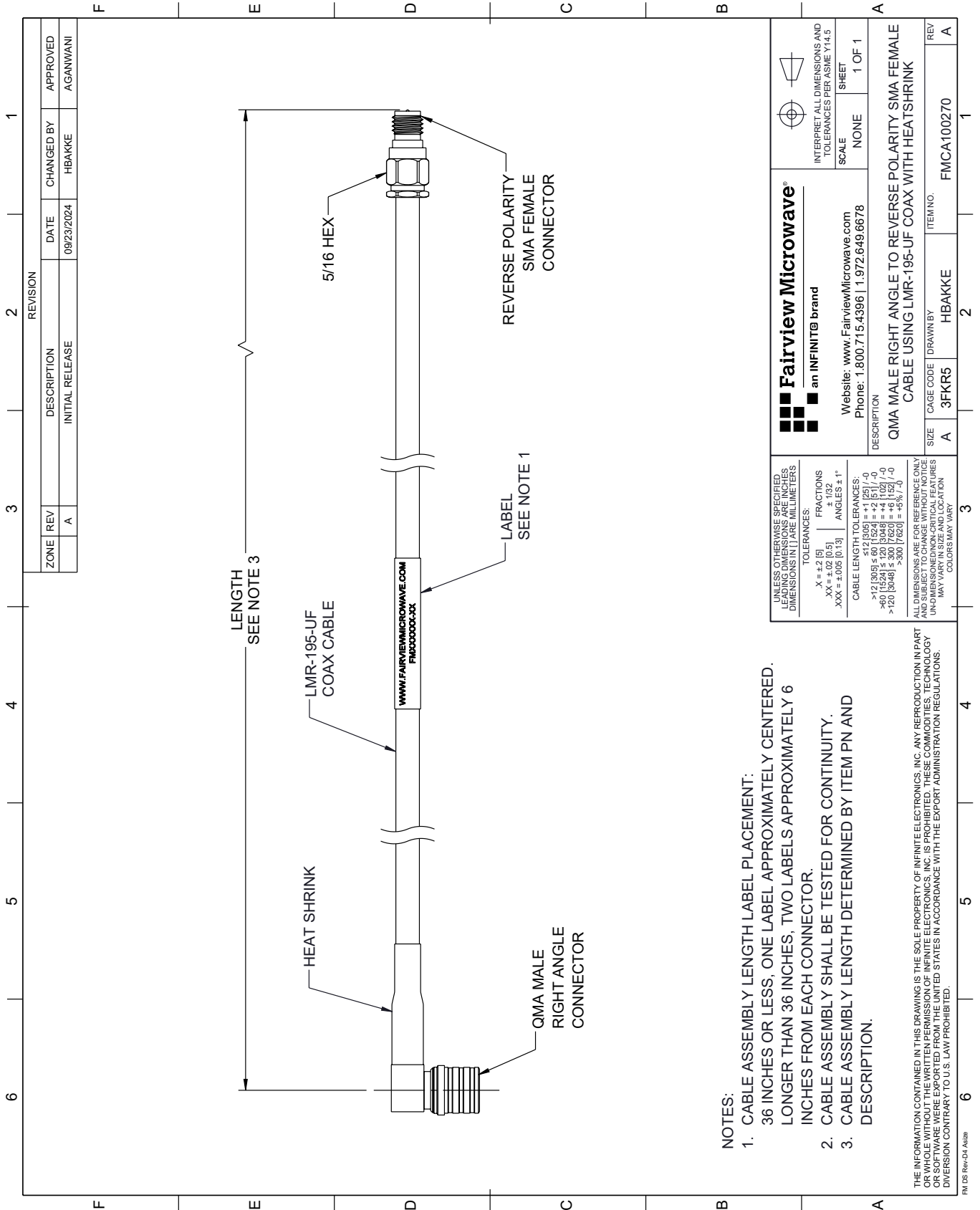
For additional information on this product, please click the following link: [Low Loss RA QMA Male to RP SMA Female Cable LMR-195-UF Coax FMCA100270](#)

URL: <https://www.fairviewmicrowave.com/low-loss-ra-qma-male-to-rp-sma-female-cable-lmr-195-uf-coax-fmca100270-p.aspx>

The information contained within this document is accurate to the best of our knowledge and representative of the part described herein. It may be necessary to make modifications to the part and/or the documentation of the part in order to implement improvements. Fairview Microwave reserves the right to make such changes as required. Unless otherwise stated, all specifications are nominal. Fairview Microwave does not make any representation or warranty regarding the suitability of the part described herein for any particular purpose, and Fairview Microwave does not assume liability arising out of the use of any part or document.

FMCA100270 CAD Drawing

Low Loss RA QMA Male to RP SMA Female Cable LMR-195-UF Coax



NOTES:

1. CABLE ASSEMBLY LENGTH LABEL PLACEMENT: 36 INCHES OR LESS, ONE LABEL APPROXIMATELY CENTERED. LONGER THAN 36 INCHES, TWO LABELS APPROXIMATELY 6 INCHES FROM EACH CONNECTOR.
2. CABLE ASSEMBLY SHALL BE TESTED FOR CONTINUITY.
3. CABLE ASSEMBLY LENGTH DETERMINED BY ITEM PN AND DESCRIPTION.