

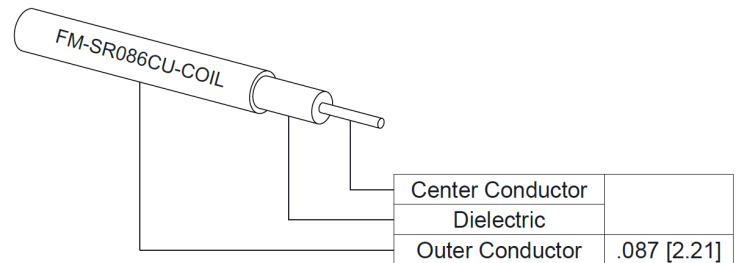
2.92mm Female Bulkhead to 1.85mm Male Cable RG405 Type .086 Semi-Rigid Coax



FMCA100198

Configuration

- Connector 1: 2.92mm Female Bulkhead
- Connector 2: 1.85mm Male
- Cable Type: FM-SR086CU-COIL
- Coax Flex Type: Semi-Rigid



Applications

- General Purpose
- Laboratory Use

Description

The 2.92mm female bulkhead to 1.85mm male cable using RG405 type .086 coax, part number FMCA100198, from Fairview Microwave is in-stock and ships same day. This Fairview 2.92mm to 1.85mm cable assembly has a female to male gender configuration with 50 ohm semi-rigid FM-SR086CU-COIL coax. Fairview Microwave's semi-rigid RF cable assemblies are ideal for high performance applications and can be formed, using proper tooling, to the routing pattern required. Our RF cable assembly with 2.92mm bulkhead interface allows designers to create external connections on their product enclosures, and can be used in a variety of other rack mount and panel mount applications.

Custom versions of most RF cable assemblies can be built and shipped same day. Custom cable assembly lengths can be obtained by specifying the desired length on the web site at time of order or by contacting a sales representative. Other RF cable assembly value added services including connector orientation or clocking, heat shrink booting and labeling are also available. RF testing can also be performed to document the electrical performance of your cable assembly.

Electrical Specifications

| Description | Minimum | Typical | Maximum | Units |
|--------------------------------------|---------|---------|---------|-------|
| Dielectric Withstanding Voltage (AC) | | | 1,000 | Vrms |

Mechanical Specifications

Cable Assembly

| | |
|----------------|---------------------|
| Width/Diameter | 0.5 in [12.7 mm] |
| Weight | 0.035 lbs [15.88 g] |

Cable

| | |
|--------------------------------------|---------------------------|
| Cable Type | FM-SR086CU-COIL |
| Impedance | 50 Ohms |
| Inner Conductor Type | Solid |
| Inner Conductor Material and Plating | Copper Clad Steel, Silver |
| Dielectric Type | PTFE |

2.92mm Female Bulkhead to 1.85mm Male
Cable RG405 Type .086 Semi-Rigid Coax



FMCA100198

| | |
|--|-------------------|
| Number of Shields | 1 |
| Outer Conductor 1 Material and Plating | Copper |
| Jacket Material | Tan |
| Repeated Minimum Bend Radius | 0.05 in [1.27 mm] |

Connectors

| Description | Connector 1 | Connector 2 |
|------------------------------------|------------------------------------|------------------------------------|
| Type | 2.92mm Female Bulkhead | 1.85mm Male |
| Impedance | 50 Ohms | 50 Ohms |
| Configuration | Straight | Straight |
| Contact Material and Plating | Beryllium Copper, Gold over Nickel | Beryllium Copper, Gold over Nickel |
| Contact Plating Specification | 50 µin minimum | MIL-G-45204 |
| Body Material and Plating | Passivated Stainless Steel | Stainless Steel, Gold over Nickel |
| Body Plating Specification | SAE-AMS-2700 | MIL-G-45204 |
| Coupling Nut Material and Plating | | Passivated Stainless Steel |
| Coupling Nut Plating Specification | | ASTM-A380 |
| Hex Size | | 1/4 inch |
| Torque | | 8 in-lbs 0.9 Nm |

Environmental Specifications

Compliance Certifications (see [product page](#) for current document)

Plotted and Other Data

Notes:

2.92mm Female Bulkhead to 1.85mm Male
Cable RG405 Type .086 Semi-Rigid Coax



FMCA100198

Typical Performance Data

How to Order

Part Number Configuration:

FMCA100198

- **xx**

uu

Unit of Measure:
cm = Centimeters
<blank> = Inches
Length
Base Number

Example: FMCA100198-12 = 12 inches long cable
FMCA100198-100cm = 100 cm long cable

2.92mm Female Bulkhead to 1.85mm Male Cable RG405 Type .086 Semi-Rigid Coax from Fairview Microwave is in-stock and available to ship same-day. All of our RF/microwave products are available off-the-shelf from our ISO 9001:2008 certified facilities in Lewisville, Texas. Fairview Microwave is RF on-demand.

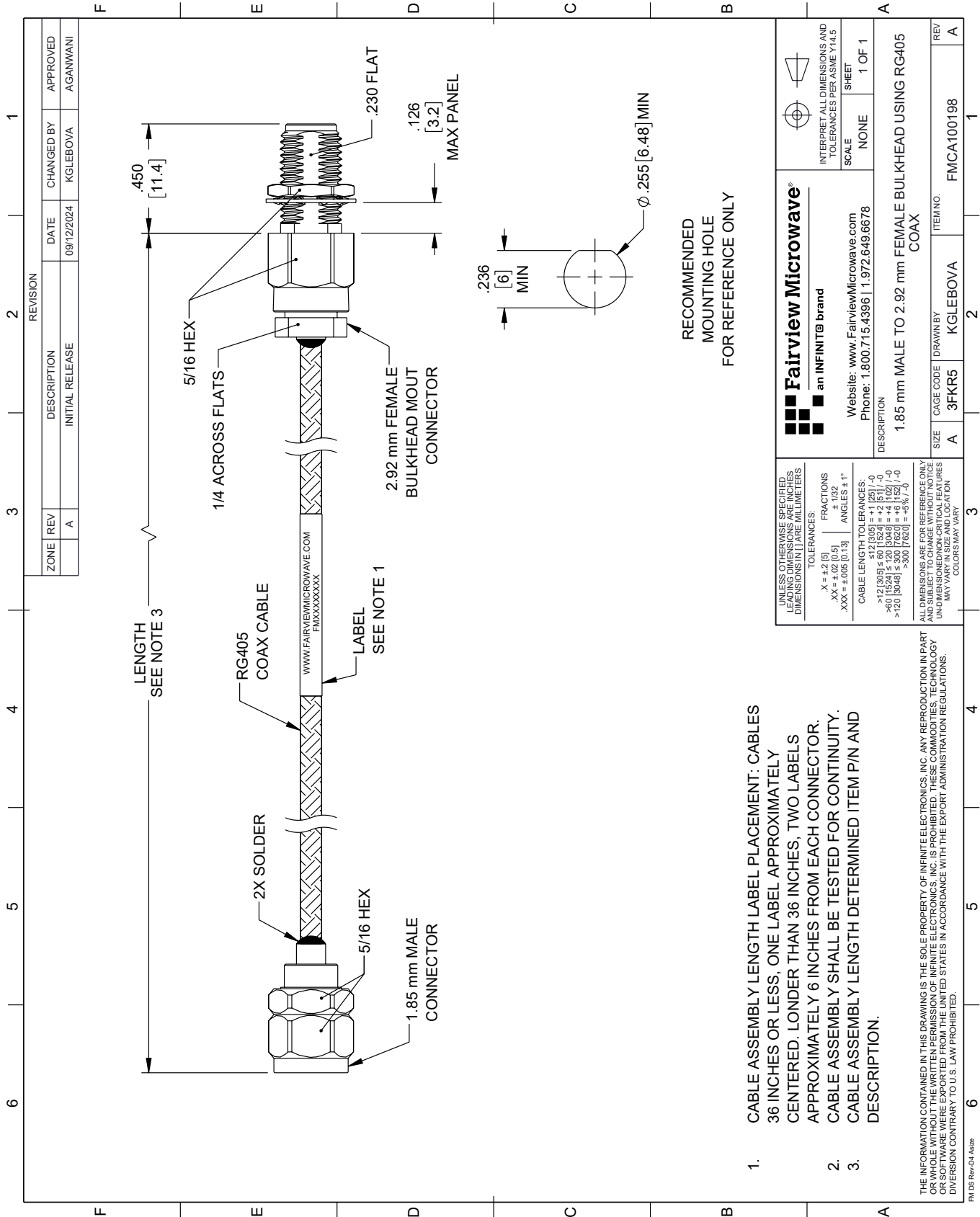
For additional information on this product, please click the following link: [2.92mm Female Bulkhead to 1.85mm Male Cable RG405 Type .086 Semi-Rigid Coax FMCA100198](#)

URL: <https://www.fairviewmicrowave.com/2.92mm-female-bulkhead-to-1.85mm-male-cable-rg405-type-.086-coax-fm-ca100198-p.aspx>

The information contained within this document is accurate to the best of our knowledge and representative of the part described herein. It may be necessary to make modifications to the part and/or the documentation of the part in order to implement improvements. Fairview Microwave reserves the right to make such changes as required. Unless otherwise stated, all specifications are nominal. Fairview Microwave does not make any representation or warranty regarding the suitability of the part described herein for any particular purpose, and Fairview Microwave does not assume liability arising out of the use of any part or document.

FMCA100198 CAD Drawing

2.92mm Female Bulkhead to 1.85mm Male Cable RG405 Type .086 Semi-Rigid Coax



1. CABLE ASSEMBLY LENGTH LABEL PLACEMENT: CABLES 36 INCHES OR LESS, ONE LABEL APPROXIMATELY CENTERED. LONGER THAN 36 INCHES, TWO LABELS APPROXIMATELY 6 INCHES FROM EACH CONNECTOR.
2. CABLE ASSEMBLY SHALL BE TESTED FOR CONTINUITY.
3. CABLE ASSEMBLY LENGTH DETERMINED ITEM P/N AND DESCRIPTION.

THE INFORMATION CONTAINED IN THIS DRAWING IS THE SOLE PROPERTY OF INFINITE ELECTRONICS, INC. ANY REPRODUCTION IN PART OR WHOLE WITHOUT THE WRITTEN PERMISSION OF INFINITE ELECTRONICS, INC. IS PROHIBITED. THESE COMMODITIES, TECHNOLOGY OR SOFTWARE WERE EXPORTED FROM THE UNITED STATES IN ACCORDANCE WITH THE EXPORT ADMINISTRATION REGULATIONS. DIVERSION CONTRARY TO U.S. LAW PROHIBITED.

FM DS Rev-D4 Alt26

UNLESS OTHERWISE SPECIFIED, LEADING DIMENSIONS ARE IN INCHES. DIMENSIONS IN [] ARE MILLIMETERS.

TOLERANCES:

X = ±.2 [5] FRACTIONS ±.132

.XX = ±.02 [0.5] ANGLES ± 1°

.XXX = ±.005 [0.13]

CABLE LENGTH TOLERANCES:

>12 [305] ≤ 60 [1524] = ±.1 [25] / -0

>60 [1524] ≤ 120 [3048] = ±.4 [102] / -0

>120 [3048] ≤ 300 [7620] = ±.8 [20] / -0

ALL DIMENSIONS ARE FOR REFERENCE ONLY. UNDIMENSIONED NON-CRITICAL FEATURES MAY VARY IN SIZE AND LOCATION. COLORS MAY VARY.

Fairview Microwave
an INFINITI® brand

Website: www.FairviewMicrowave.com
Phone: 1.800.715.4396 | 1.972.649.6678

INTERPRET ALL DIMENSIONS AND TOLERANCES PER ASME Y14.5

SCALE: NONE SHEET: 1 OF 1

| | | | |
|-------------|--|----------|------------|
| DESCRIPTION | 1.85 mm MALE TO 2.92 mm FEMALE BULKHEAD USING RG405 COAX | | |
| SIZE | CAGE CODE | DRAWN BY | ITEM NO. |
| A | 3FKR5 | KGLEBOVA | FMCA100198 |
| REV | A | | REV |

RECOMMENDED MOUNTING HOLE FOR REFERENCE ONLY

