

1.85mm Female to 1.85mm Female Bulkhead  
Cable RG405 Type .086 Semi-Rigid Coax



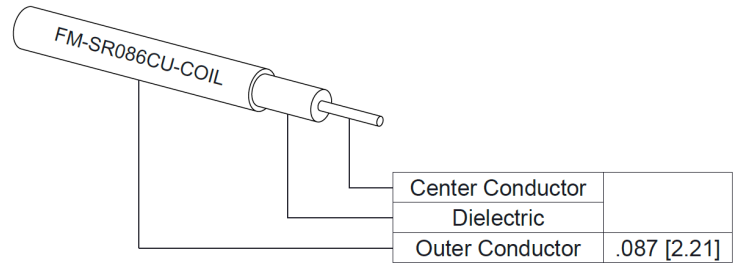
**FMCA100195**

**Configuration**

- Connector 1: 1.85mm Female
- Connector 2: 1.85mm Female Bulkhead
- Cable Type: FM-SR086CU-COIL
- Coax Flex Type: Semi-Rigid

**Features**

- Max Frequency 40 GHz



**Applications**

- General Purpose
- Laboratory Use

**Description**

The 1.85mm female to 1.85mm female bulkhead cable using RG405 type .086 coax, part number FMCA100195, from Fairview Microwave is in-stock and ships same day. This Fairview 1.85mm to 1.85mm cable assembly has a female to female gender configuration with 50 ohm semi-rigid FM-SR086CU-COIL coax. Fairview Microwave's semi-rigid RF cable assemblies are ideal for high performance applications and can be formed, using proper tooling, to the routing pattern required. The FMCA100195 1.85mm female to 1.85mm female cable assembly operates to 40 GHz. Our RF cable assembly with 1.85mm bulkhead interface allows designers to create external connections on their product enclosures, and can be used in a variety of other rack mount and panel mount applications.

Custom versions of most RF cable assemblies can be built and shipped same day. Custom cable assembly lengths can be obtained by specifying the desired length on the web site at time of order or by contacting a sales representative. Other RF cable assembly value added services including connector orientation or clocking, heat shrink booting and labeling are also available. RF testing can also be performed to document the electrical performance of your cable assembly.

**Electrical Specifications**

Description	Minimum	Typical	Maximum	Units
Frequency Range	DC		40	GHz
VSWR			1.4:1	
Dielectric Withstanding Voltage (AC)			1,000	Vrms

**Specifications by Frequency**

1.85mm Female to 1.85mm Female Bulkhead  
Cable RG405 Type .086 Semi-Rigid Coax



**FMCA100195**

Part Number	Length	Description	F1	F2	F3	F4	Units	Weight (lbs)
			Frequency	2500	5000	10000	20000	
FMCA100195	Custom Lengths Available	Insertion Loss (Typ.)	0.316	0.477	0.8	1.2	dB/ft	
			1.04	1.57	2.63	3.94	dB/m	
FMCA100195-6	6 Inch	Insertion Loss (Typ.)	0.36	0.44	0.6	0.8	dB	0.04
FMCA100195-12	12 Inch	Insertion Loss (Typ.)	0.52	0.68	1	1.4	dB	0.046
FMCA100195-18	18 Inch	Insertion Loss (Typ.)	0.68	0.92	1.4	2	dB	0.053
FMCA100195-24	24 Inch	Insertion Loss (Typ.)	0.84	1.16	1.8	2.6	dB	0.06
FMCA100195-36	36 Inch	Insertion Loss (Typ.)	1.15	1.64	2.6	3.8	dB	0.073

The insertion loss data for the base model does not include loss due to the connectors. Each length includes insertion loss due to the connectors.

Loss due to Connector 1: 0.1 dB  
 Loss due to Connector 2: 0.1 dB  
 Base Weight: 0.046 pounds  
 Additional Weight per Inch: 0.00109 pounds

**Mechanical Specifications**

**Cable Assembly**

Width/Diameter: 0.5 in [12.7 mm]  
 Weight: 0.046 lbs [20.87 g]

**Cable**

Cable Type: FM-SR086CU-COIL  
 Impedance: 50 Ohms  
 Inner Conductor Type: Solid  
 Inner Conductor Material and Plating: Copper Clad Steel, Silver  
 Dielectric Type: PTFE  
 Number of Shields: 1  
 Outer Conductor 1 Material and Plating: Copper  
 Jacket Material: Tan  
 Repeated Minimum Bend Radius: 0.05 in [1.27 mm]

1.85mm Female to 1.85mm Female Bulkhead  
Cable RG405 Type .086 Semi-Rigid Coax



**FMCA100195**

**Connectors**

Description	Connector 1	Connector 2
Type	1.85mm Female	1.85mm Female Bulkhead
Specification		IEEE-STD-P287
Impedance	50 Ohms	50 Ohms
Configuration	Straight	Straight
Contact Material and Plating	Beryllium Copper, Gold over Nickel over Copper	Beryllium Copper, Gold over Nickel
Contact Plating Specification		50 µin minimum
Dielectric Type	PPO	PEI
Body Material and Plating	Stainless Steel, Passivated	Passivated Stainless Steel
Body Plating Specification		SAE-AMS-2700

**Environmental Specifications**

**Compliance Certifications** (see [product page](#) for current document)

**Plotted and Other Data**

Notes:

1.85mm Female to 1.85mm Female Bulkhead Cable RG405 Type .086 Semi-Rigid Coax



**FMCA100195**

**Typical Performance Data**

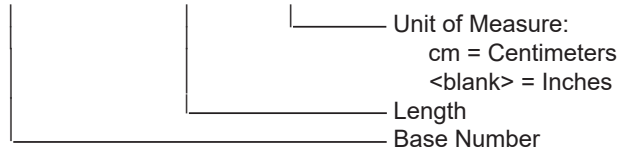
**How to Order**

Part Number Configuration:

**FMCA100195**

**- xx**

**uu**



Example: FMCA100195-12 = 12 inches long cable  
FMCA100195-100cm = 100 cm long cable

1.85mm Female to 1.85mm Female Bulkhead Cable RG405 Type .086 Semi-Rigid Coax from Fairview Microwave is in-stock and available to ship same-day. All of our RF/microwave products are available off-the-shelf from our ISO 9001:2008 certified facilities in Lewisville, Texas. Fairview Microwave is RF on-demand.

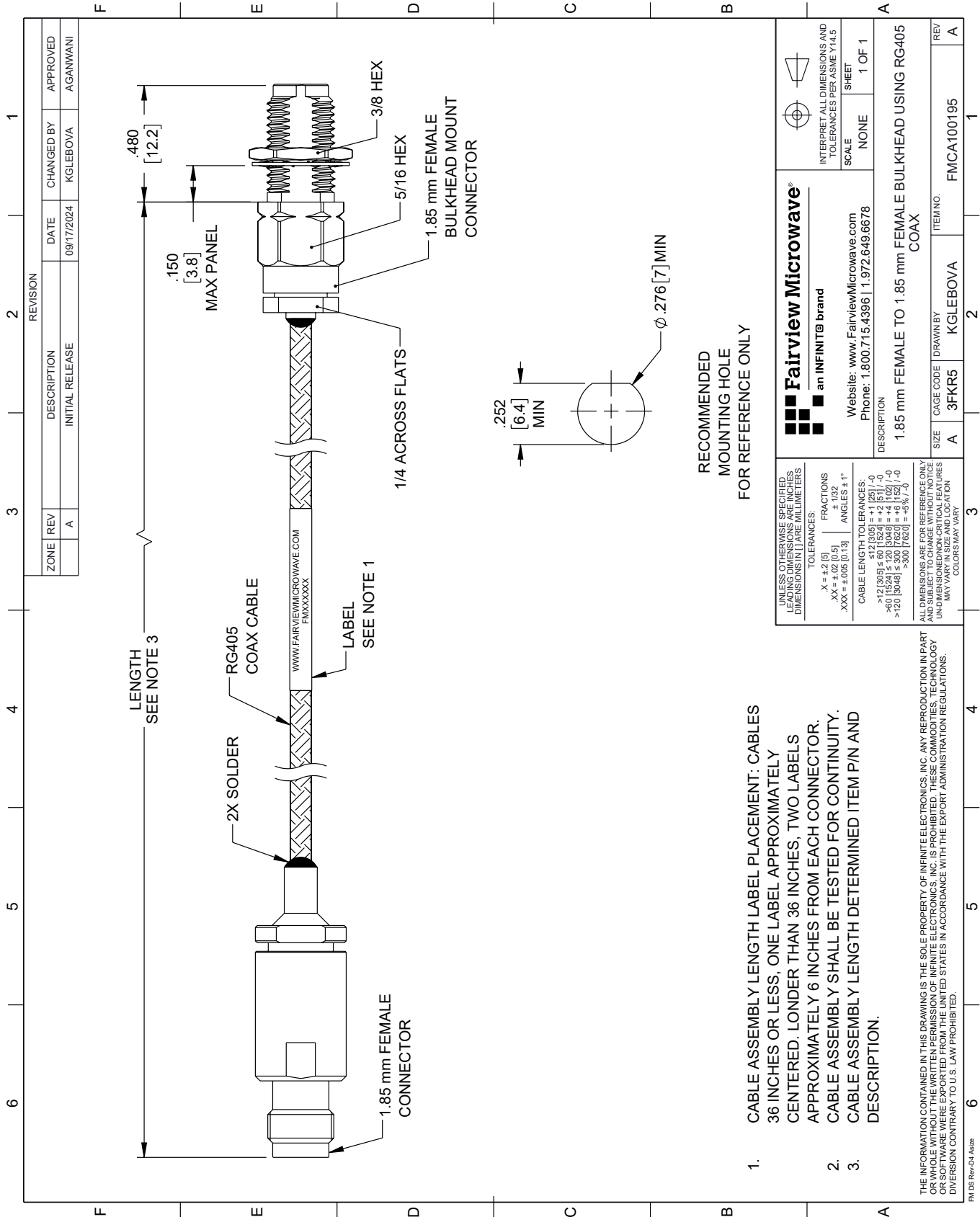
For additional information on this product, please click the following link: [1.85mm Female to 1.85mm Female Bulkhead Cable RG405 Type .086 Semi-Rigid Coax FMCA100195](#)

URL: <https://www.fairviewmicrowave.com/1.85mm-female-to-1.85mm-female-bulkhead-cable-rg405-type-.086-coax-fm-ca100195-p.aspx>

The information contained within this document is accurate to the best of our knowledge and representative of the part described herein. It may be necessary to make modifications to the part and/or the documentation of the part in order to implement improvements. Fairview Microwave reserves the right to make such changes as required. Unless otherwise stated, all specifications are nominal. Fairview Microwave does not make any representation or warranty regarding the suitability of the part described herein for any particular purpose, and Fairview Microwave does not assume liability arising out of the use of any part or document.

# FMCA100195 CAD Drawing

1.85mm Female to 1.85mm Female Bulkhead Cable RG405 Type .086 Semi-Rigid Coax



RECOMMENDED MOUNTING HOLE FOR REFERENCE ONLY

1. CABLE ASSEMBLY LENGTH LABEL PLACEMENT: CABLES 36 INCHES OR LESS, ONE LABEL APPROXIMATELY CENTERED. LONGER THAN 36 INCHES, TWO LABELS APPROXIMATELY 6 INCHES FROM EACH CONNECTOR.
2. CABLE ASSEMBLY SHALL BE TESTED FOR CONTINUITY.
3. CABLE ASSEMBLY LENGTH DETERMINED ITEM P/N AND DESCRIPTION.

THE INFORMATION CONTAINED IN THIS DRAWING IS THE SOLE PROPERTY OF INFINITE ELECTRONICS, INC. ANY REPRODUCTION IN PART OR WHOLE WITHOUT THE WRITTEN PERMISSION OF INFINITE ELECTRONICS, INC. IS PROHIBITED. THESE COMMODITIES, TECHNOLOGY OR SOFTWARE WERE EXPORTED FROM THE UNITED STATES IN ACCORDANCE WITH THE EXPORT ADMINISTRATION REGULATIONS. DIVISION CONTRARY TO U.S. LAW PROHIBITED.

FM DS Rev-D4 Alt2