

## SMA Female Bulkhead to RA SMC Male Cable RG-316 Coax with LF Solder



### FMC1228315LF

#### Configuration

- Connector 1: SMA Female Bulkhead
- Connector 2: SMC Male Right Angle
- Cable Type: RG-316
- Coax Flex Type: Flexible

#### Features

- Max Frequency 3 GHz
- 70% Phase Velocity
- FEP Jacket

#### Applications

- General Purpose
- Laboratory Use

#### Description

The SMA female bulkhead to RA SMC male cable using RG-316 coax, part number FMC1228315LF, from Fairview Microwave is in-stock and ships same day. This Fairview SMA to SMC cable assembly has a female to male gender configuration with 50 ohm flexible RG-316 coax. Fairview Microwave's flexible RF cable assemblies are ideal for applications where tight bends and continual flexure are required. The FMC1228315LF SMA female to SMC male cable assembly operates to 3 GHz. The right angle SMC interface on the RG-316 cable allows for easier connections in tight spaces. Our RF cable assembly with SMA bulkhead interface allows designers to create external connections on their product enclosures, and can be used in a variety of other rack mount and panel mount applications.

Custom versions of most RF cable assemblies can be built and shipped same day. Custom cable assembly lengths can be obtained by specifying the desired length on the web site at time of order or by contacting a sales representative. Other RF cable assembly value added services including connector orientation or clocking, heat shrink booting and labeling are also available. RF testing can also be performed to document the electrical performance of your cable assembly.

#### Electrical Specifications

Description	Minimum	Typical	Maximum	Units
Frequency Range	DC		3	GHz
VSWR			1.35:1	
Velocity of Propagation		70		%
Capacitance		32 [104.99]		pF/ft [pF/m]

#### Mechanical Specifications

##### Cable Assembly

Length 0 in [0 mm]

##### Cable

Cable Type RG-316  
Impedance 50 Ohms  
Inner Conductor Type Stranded

SMA Female Bulkhead to RA SMC Male  
Cable RG-316 Coax with LF Solder



**FMC1228315LF**

Inner Conductor Material and Plating	Copper, Silver
Dielectric Type	PTFE
Number of Shields	1
Shield Layer 1	Silver Plated Copper Braid
Jacket Material	FEP, Tan
Jacket Diameter	0.098 in [2.49 mm]

**Connectors**

Description	Connector 1	Connector 2
Type	SMA Female Bulkhead	SMC Male Right Angle
Impedance	50 Ohms	50 Ohms
Configuration	Straight	Right Angle
Color	Silver	
Contact Material and Plating	Beryllium Copper, Gold	Beryllium Copper, Gold
Contact Plating Specification	50µ in. minimum	50µ in. minimum
Dielectric Type	PTFE	PTFE
Body Material and Plating	Brass, Gold	Brass, Gold
Body Plating Specification	3µ in. minimum	3µ in. minimum

**Environmental Specifications**

Operating Range Temperature	-20 to +80 deg C
-----------------------------	------------------

**Compliance Certifications** (see [product page](#) for current document)

**Plotted and Other Data**

Notes:

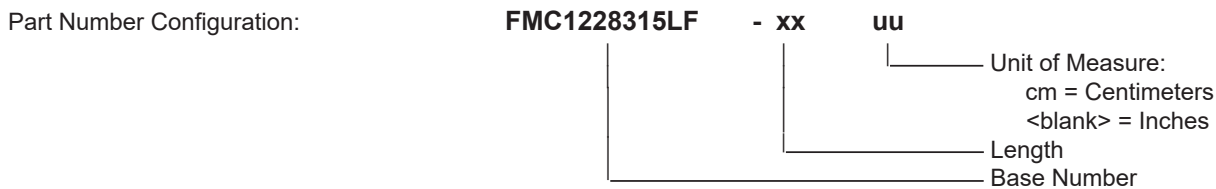
SMA Female Bulkhead to RA SMC Male  
Cable RG-316 Coax with LF Solder



**FMC1228315LF**

**Typical Performance Data**

**How to Order**



Example: FMC1228315LF-12 = 12 inches long cable  
FMC1228315LF-100cm = 100 cm long cable

SMA Female Bulkhead to RA SMC Male Cable RG-316 Coax with LF Solder from Fairview Microwave is in-stock and available to ship same-day. All of our RF/microwave products are available off-the-shelf from our ISO 9001:2008 certified facilities in Lewisville, Texas. Fairview Microwave is RF on-demand.

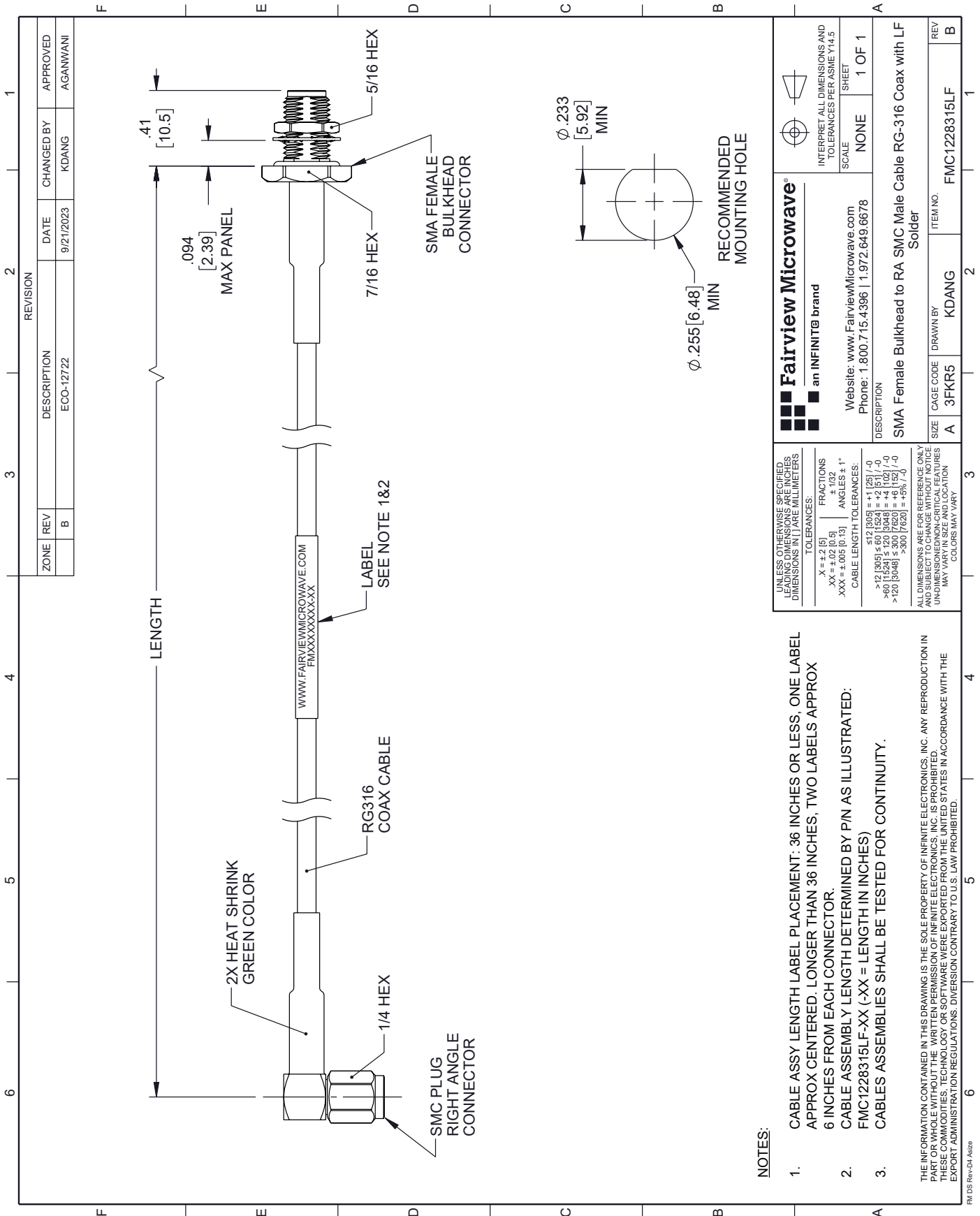
For additional information on this product, please click the following link: [SMA Female Bulkhead to RA SMC Male Cable RG-316 Coax with LF Solder FMC1228315LF](#)

URL: <https://www.fairviewmicrowave.com/standard-sma-female-ra-smc-male-cable-rg316-coax-fmc1228315lf-p.aspx>

The information contained within this document is accurate to the best of our knowledge and representative of the part described herein. It may be necessary to make modifications to the part and/or the documentation of the part in order to implement improvements. Fairview Microwave reserves the right to make such changes as required. Unless otherwise stated, all specifications are nominal. Fairview Microwave does not make any representation or warranty regarding the suitability of the part described herein for any particular purpose, and Fairview Microwave does not assume liability arising out of the use of any part or document.

# FMC1228315LF CAD Drawing

SMA Female Bulkhead to RA SMC Male Cable RG-316 Coax with LF Solder



## NOTES:

1. CABLE ASSY LENGTH LABEL PLACEMENT: 36 INCHES OR LESS, ONE LABEL APPROX CENTERED. LONGER THAN 36 INCHES, TWO LABELS APPROX 6 INCHES FROM EACH CONNECTOR.
2. CABLE ASSEMBLY LENGTH DETERMINED BY PIN AS ILLUSTRATED: FMC1228315LF-XX (-XX = LENGTH IN INCHES)
3. CABLES ASSEMBLIES SHALL BE TESTED FOR CONTINUITY.

THE INFORMATION CONTAINED IN THIS DRAWING IS THE SOLE PROPERTY OF INFINITE ELECTRONICS, INC.. ANY REPRODUCTION IN PART OR WHOLE WITHOUT THE WRITTEN PERMISSION OF INFINITE ELECTRONICS, INC. IS PROHIBITED. THESE COMMODITIES, TECHNOLOGY OR SOFTWARE WERE EXPORTED FROM THE UNITED STATES IN ACCORDANCE WITH THE EXPORT ADMINISTRATION REGULATIONS. DIVERSION CONTRARY TO U.S. LAW PROHIBITED.

Rev: Ch Assy

ZONE	REV	DESCRIPTION	DATE	CHANGED BY	APPROVED
	B	ECO-12722	9/21/2023	KDANG	AGANWANI

<p><b>Fairview Microwave</b> an INFINITI brand</p>		<p>INTERPRET ALL DIMENSIONS AND TOLERANCES PER ASME Y14.5</p> <p>SCALE: NONE</p> <p>SHEET: 1 OF 1</p>
<p>Website: <a href="http://www.FairviewMicrowave.com">www.FairviewMicrowave.com</a></p> <p>Phone: 1.800.715.4396   1.972.649.6678</p>		<p>DESCRIPTION: SMA Female Bulkhead to RA SMC Male Cable RG-316 Coax with LF Solder</p>
<p>UNLESS OTHERWISE SPECIFIED LEADING DIMENSIONS ARE IN INCHES DIMENSIONS IN [ ] ARE MILLIMETERS</p> <p>TOLERANCES:</p> <p>X = ±.2 [5]      FRACTIONS ± 1/32</p> <p>.XX = ±.02 [0.5]      ANGLES ± 1°</p> <p>.XXX = ±.005 [0.13]</p> <p>CABLE LENGTH TOLERANCES:</p> <p>&lt;12 [305] ±.1 [25] /-0</p> <p>&gt;12 [305] ≤ 60 [1524] = ±.2 [5] /-0</p> <p>&gt;60 [1524] ≤ 120 [3048] = ±.4 [102] /-0</p> <p>&gt;120 [3048] ≤ 300 [7620] = ±.6 [152] /-0</p> <p>&gt;300 [7620] = ±.9% /-0</p>	<p>ALL DIMENSIONS ARE FOR REFERENCE ONLY AND SUBJECT TO CHANGE WITHOUT NOTICE UNLESS OTHERWISE SPECIFIED IN DIMENSIONS MAY VARY IN SIZE AND LOCATION COLORS MAY VARY</p>	
<p>FAIRVIEWMICROWAVE.COM</p> <p>FMC1228315LF-XX</p>	<p>ITEM NO: FMC1228315LF</p>	<p>REV: B</p>