

Smooth Bore CM SMP Male Bulkhead to RA SMP Female Cable RG405 Type .086 Coax

The SMP male smooth bore cm bulkhead to RA SMP female cable using RG405 type .086 coax, part number FMC01103, from Fairview Microwave is in-stock and ships same day. This Fairview SMP to SMP cable assembly has a male to female gender configuration with 50 ohm semi-rigid FM-SR086ALTN coax. Fairview Microwave's semi-rigid RF cable assemblies are ideal for high performance applications and can be formed, using proper tooling, to the routing pattern required. The FMC01103 SMP male to SMP female cable assembly operates to 18 GHz. The right angle SMP interface on the FM-SR086ALTN cable allows for easier connections in tight spaces. Our RF cable assembly with SMP bulkhead interface allows designers to create external connections on their product enclosures, and can be used in a variety of other rack mount and panel mount applications.

Custom versions of most RF cable assemblies can be built and shipped same day. Custom cable assembly lengths can be obtained by specifying the desired length on the web site at time of order or by contacting a sales representative. Other RF cable assembly value added services including connector orientation or clocking, heat shrink booting and labeling are also available. RF testing can also be performed to document the electrical performance of your cable assembly.

Electrical Specifications

Description	Min	Typ	Max	Units
Frequency Range	DC		18	GHz
VSWR			1.4:1	

Performance by Frequency

Description	F1	F2	F3	F4	F5	Units
Frequency	1	2	4.5	9	18	GHz
Insertion Loss (Typ.)	0.23	0.294	0.455	0.745	1.21	dB/ft
	0.75	0.96	1.49	2.44	3.97	dB/m

Electrical Specification Notes:

Insertion Loss does not include the loss of the connectors. Insertion Loss is estimated as 0.1 dB for the male connector and 0.2 dB for the female connector.

Mechanical Specifications

Cable Assembly

Weight 0.021 lbs [9.53 g]

Cable

Cable Type FM-SR086ALTN
 Impedance 50 Ohms
 Inner Conductor Type Solid
 Inner Conductor Material and Plating Copper Clad Steel, Silver
 Dielectric Type PTFE
 Number of Shields 0
 Outer Conductor Material and Plating Aluminum, Tin

One Time Minimum Bend Radius 0.07 in [1.78 mm]



Configuration:

- Smooth Bore CMSMP Male Bulkhead
- SMP Female Right Angle
- FM-SR086ALTN

Features:

- Max Frequency 18 GHz

Applications:

- General Purpose
- Laboratory Use

Fairview Microwave
 301 Leora Ln., Suite 100
 Lewisville, TX 75056
 Tel: 1-800-715-4396 / (972) 649-6678
 Fax: (972) 649-6689
www.fairviewmicrowave.com
sales@fairviewmicrowave.com

Connectors

Description	Connector 1	Connector 2
Type	SMP Male	SMP Female
Mount Method	Bulkhead	
Specification	MIL-STD-348	MIL-STD-348
Impedance	50 Ohms	50 Ohms
Connection Method	Smooth Bore CM	
Contact Material & Plating	Beryllium Copper, Gold	Beryllium Copper, Gold
Contact Plating Spec.	MIL-G-45204	MIL-G-45204
Dielectric Type	PTFE	PTFE
Outer Cond Material & Plating		Beryllium Copper, Gold
Outer Cond Plating Spec.		MIL-G-45204
Body Material & Plating	Beryllium Copper, Gold	
Body Plating Spec.	MIL-G-45204	

Environmental Specifications
Temperature

Operating Range -55 to +125 deg C

Compliance Certifications (see [product page](#) for current document)

Plotted and Other Data

Notes:

How to Order

Part Number Configuration:

FMC01103 - xx uu

 cm = Centimeters
 <blank> = Inches
 Length

 Example: FMC01103-12 = 12 inches long cable
 FMC01103-100cm = 100 cm long cable

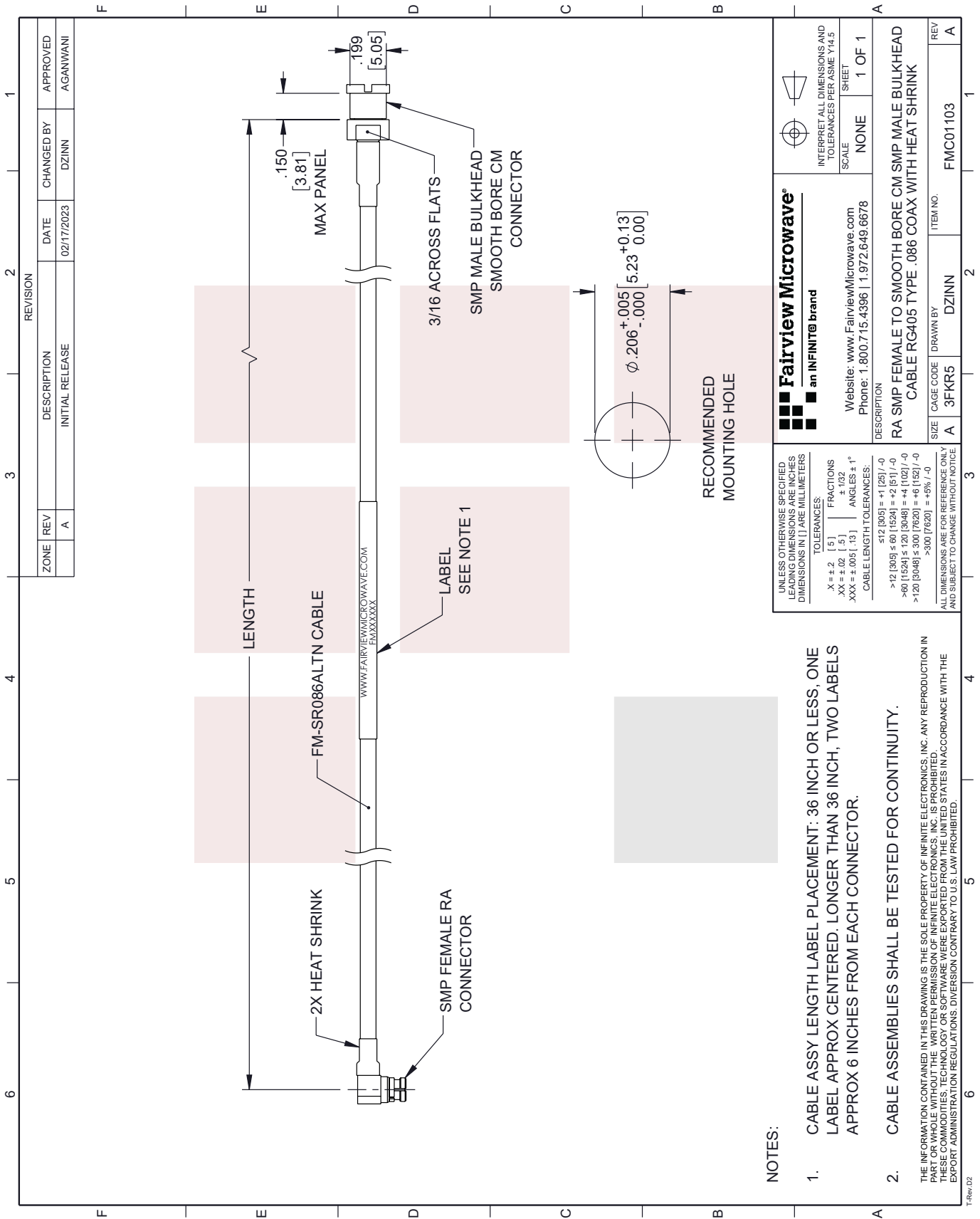
Smooth Bore CM SMP Male Bulkhead to RA SMP Female Cable RG405 Type .086 Coax from Fairview Microwave has same day shipment for domestic and International orders. Our RF, microwave and millimeter wave products maintain a 99% availability and are part of the broadest selection in the industry.

Click the following link to obtain additional part information: [Smooth Bore CM SMP Male Bulkhead to RA SMP Female Cable RG405 Type .086 Coax FMC01103](#)

URL: <https://www.fairviewmicrowave.com/smooth-bore-cm-smp-male-bulkhead-to-ra-smp-female-cable-rg405-type-.086-coax-fmc01103-p.aspx>

The information contained in this document is accurate to the best of our knowledge and representative of the part described herein. It may be necessary to make modifications to the part and/or the documentation of the part, in order to implement improvements. Fairview Microwave reserves the right to make such changes as required. Unless otherwise stated, all specifications are nominal. Fairview Microwave does not make any representation or warranty regarding the suitability of the part described herein for any particular purpose, and Fairview Microwave does not assume any liability arising out of the use of any part or documentation.





ZONE		REVISION		DESCRIPTION		DATE		CHANGED BY		APPROVED	
A				INITIAL RELEASE		02/17/2023	DZINN		AGANWANI		

Fairview Microwave®
an INFINITE® brand

Website: www.FairviewMicrowave.com
Phone: 1.800.715.4396 | 1.972.649.6678

INTERPRET ALL DIMENSIONS AND TOLERANCES PER ASME Y14.5
SCALE: NONE SHEET: 1 OF 1

DESCRIPTION:
RA SMP FEMALE TO SMOOTH BORE CM SMP MALE BULKHEAD
CABLE RG405 TYPE .086 COAX WITH HEAT SHRINK

SIZE	CAGE CODE	DRAWN BY	ITEM NO.
A	3FKR5	DZINN	FMC01103

UNLESS OTHERWISE SPECIFIED LEADING DIMENSIONS ARE INCHES DIMENSIONS IN [] ARE MILLIMETERS

TOLERANCES:
 .X = ±.2 [5]
 .XX = ±.02 [.5]
 .XXX = ±.005 [.13]
 FRACTIONS: ± 1/32
 ANGLES ± 1°

CABLE LENGTH TOLERANCES:
 ≤12 [305] = ±1 [25] / -0
 >12 [305] ≤ 60 [1524] = +2 [51] / -0
 >60 [1524] ≤ 120 [3048] = +4 [102] / -0
 >120 [3048] ≤ 300 [7620] = +6 [152] / -0
 >300 [7620] = +.5% / -0

ALL DIMENSIONS ARE FOR REFERENCE ONLY AND SUBJECT TO CHANGE WITHOUT NOTICE

- NOTES:**
- CABLE ASSY LENGTH LABEL PLACEMENT: 36 INCH OR LESS, ONE LABEL APPROX CENTERED. LONGER THAN 36 INCH, TWO LABELS APPROX 6 INCHES FROM EACH CONNECTOR.
 - CABLE ASSEMBLIES SHALL BE TESTED FOR CONTINUITY.
- THE INFORMATION CONTAINED IN THIS DRAWING IS THE SOLE PROPERTY OF INFINITE ELECTRONICS, INC. ANY REPRODUCTION IN PART OR WHOLE WITHOUT THE WRITTEN PERMISSION OF INFINITE ELECTRONICS, INC. IS PROHIBITED. THESE COMMODITIES, TECHNOLOGY OR SOFTWARE WERE EXPORTED FROM THE UNITED STATES IN ACCORDANCE WITH THE EXPORT ADMINISTRATION REGULATIONS. DIVERSION CONTRARY TO U.S. LAW PROHIBITED.