

SMA Male to Mini SMP Female Cable RG405 Type .086 Coax

The SMA male to Mini SMP female cable using RG405 type .086 coax, part number FMC01083, from Fairview Microwave is in-stock and ships same day. This Fairview SMA to Mini SMP cable assembly has a male to female gender configuration with 50 ohm semi-rigid FM-SR086ALTN coax. Fairview Microwave's semi-rigid RF cable assemblies are ideal for high performance applications and can be formed, using proper tooling, to the routing pattern required. The FMC01083 SMA male to Mini SMP female cable assembly operates to 18 GHz.

Custom versions of most RF cable assemblies can be built and shipped same day. Custom cable assembly lengths can be obtained by specifying the desired length on the web site at time of order or by contacting a sales representative. Other RF cable assembly value added services including connector orientation or clocking, heat shrink booting and labeling are also available. RF testing can also be performed to document the electrical performance of your cable assembly.

Electrical Specifications

Description	Min	Typ	Max	Units
Frequency Range	DC		18	GHz
VSWR			1.4:1	

Performance by Frequency

Description	F1	F2	F3	F4	F5	Units
Frequency	1	2	4.5	9	18	GHz
Insertion Loss (Typ.)	0.23	0.294	0.455	0.745	1.21	dB/ft
	0.75	0.96	1.49	2.44	3.97	dB/m

Electrical Specification Notes:

Insertion Loss does not include the loss of the connectors. Insertion Loss is estimated as 0.1 dB per connector.

Mechanical Specifications

Cable Assembly

Weight 0.058 lbs [26.31 g]

Cable

Cable Type FM-SR086ALTN
 Impedance 50 Ohms
 Inner Conductor Type Solid
 Inner Conductor Material and Plating Copper Clad Steel, Silver
 Dielectric Type PTFE
 Number of Shields 0
 Outer Conductor Material and Plating Aluminum, Tin

One Time Minimum Bend Radius 0.07 in [1.78 mm]



Configuration:

- SMA Male
- Mini SMP Female
- FM-SR086ALTN

Features:

- Max Frequency 18 GHz

Applications:

- General Purpose
- Laboratory Use

Fairview Microwave
 301 Leora Ln., Suite 100
 Lewisville, TX 75056
 Tel: 1-800-715-4396 / (972) 649-6678
 Fax: (972) 649-6689
www.fairviewmicrowave.com
sales@fairviewmicrowave.com

Connectors

Description	Connector 1	Connector 2
Type	SMA Male	Mini SMP Female
Specification	MIL-STD-348A	
Impedance	50 Ohms	50 Ohms
Contact Material & Plating	Brass, Gold	Beryllium Copper, Gold
Contact Plating Spec.	50 µin minimum	MIL-G-45204
Dielectric Type	PTFE	PTFE
Outer Cond Material & Plating		Beryllium Copper, Gold
Outer Cond Plating Spec.		MIL-G-45204
Body Material & Plating	Stainless Steel, Gold	
Body Plating Spec.	3 µin minimum	
Coupling Nut Material & Plating	Passivated Stainless Steel	
Hex Size	5/16 inch	

Environmental Specifications
Temperature

Operating Range -55 to +125 deg C

Compliance Certifications (see [product page](#) for current document)

Plotted and Other Data

Notes:

How to Order

Part Number Configuration:

FMC01083 - xx uu

 cm = Centimeters
 <blank> = Inches
 Length

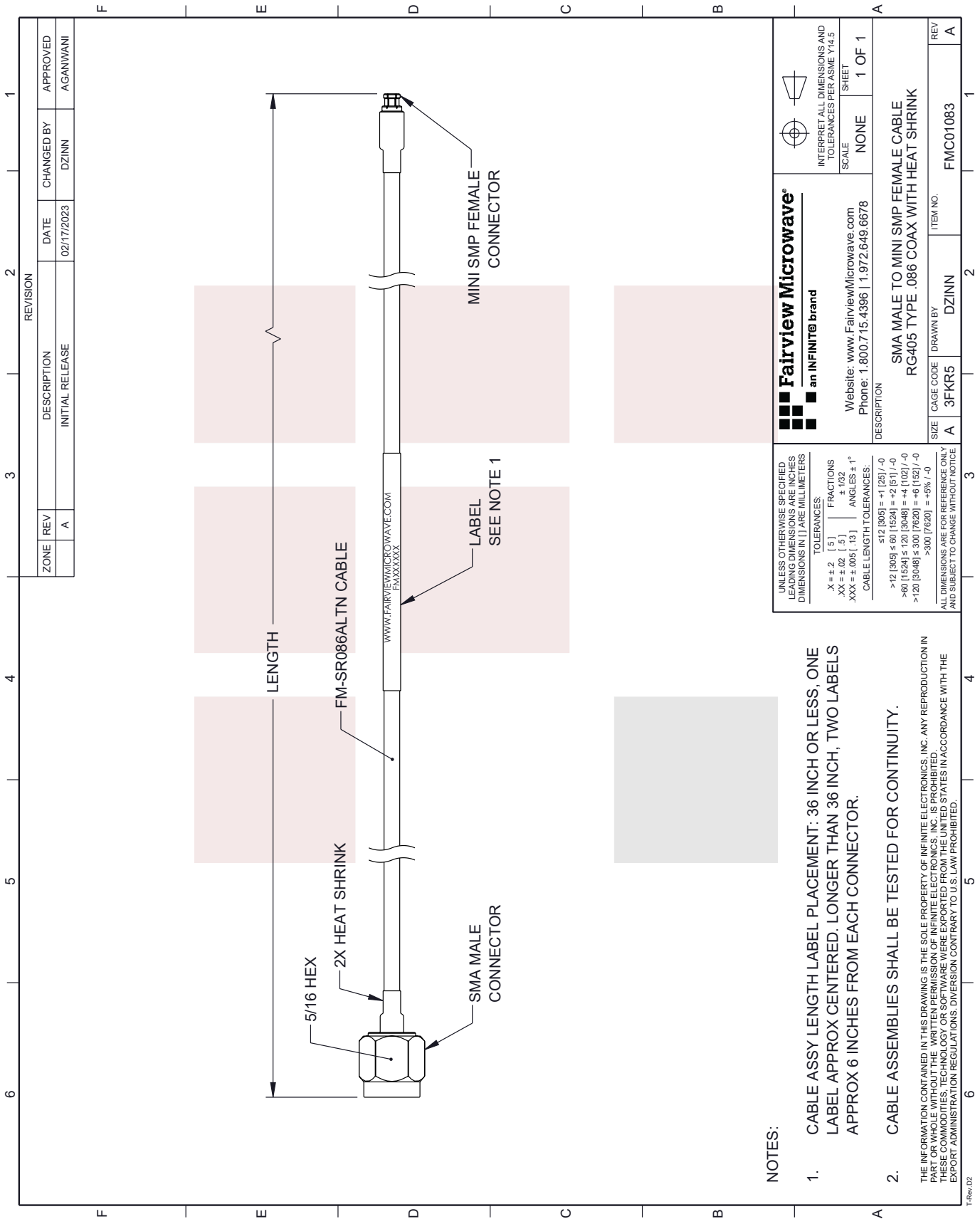
 Example: FMC01083-12 = 12 inches long cable
 FMC01083-100cm = 100 cm long cable

SMA Male to Mini SMP Female Cable RG405 Type .086 Coax from Fairview Microwave has same day shipment for domestic and International orders. Our RF, microwave and millimeter wave products maintain a 99% availability and are part of the broadest selection in the industry.

Click the following link to obtain additional part information: [SMA Male to Mini SMP Female Cable RG405 Type .086 Coax FMC01083](#)

URL: <https://www.fairviewmicrowave.com/sma-male-to-mini-smp-female-cable-rg405-type-.086-coax-fmc01083-p.aspx>

The information contained in this document is accurate to the best of our knowledge and representative of the part described herein. It may be necessary to make modifications to the part and/or the documentation of the part, in order to implement improvements. Fairview Microwave reserves the right to make such changes as required. Unless otherwise stated, all specifications are nominal. Fairview Microwave does not make any representation or warranty regarding the suitability of the part described herein for any particular purpose, and Fairview Microwave does not assume any liability arising out of the use of any part or documentation.



NOTES:

- CABLE ASSY LENGTH LABEL PLACEMENT: 36 INCH OR LESS, ONE LABEL APPROX CENTERED. LONGER THAN 36 INCH, TWO LABELS APPROX 6 INCHES FROM EACH CONNECTOR.
- CABLE ASSEMBLIES SHALL BE TESTED FOR CONTINUITY.

THE INFORMATION CONTAINED IN THIS DRAWING IS THE SOLE PROPERTY OF INFINITE ELECTRONICS, INC. ANY REPRODUCTION IN PART OR WHOLE WITHOUT THE WRITTEN PERMISSION OF INFINITE ELECTRONICS, INC. IS PROHIBITED. THESE COMMODITIES, TECHNOLOGY OR SOFTWARE WERE EXPORTED FROM THE UNITED STATES IN ACCORDANCE WITH THE EXPORT ADMINISTRATION REGULATIONS. DIVERSION CONTRARY TO U.S. LAW PROHIBITED.

UNLESS OTHERWISE SPECIFIED, LEADING DIMENSIONS ARE INCHES DIMENSIONS IN [] ARE MILLIMETERS

TOLERANCES:
.X = ±.2 [.5] FRACTIONS
.XX = ±.02 [.5] ±.132
.XXX = ±.005 [.13] ANGLES ± 1°

CABLE LENGTH TOLERANCES:
.512 [305] = +1 [25] / -0
>12 [305] ≤ 60 [1524] = +2 [51] / -0
>60 [1524] ≤ 120 [3048] = +4 [102] / -0
>120 [3048] ≤ 300 [7620] = +6 [152] / -0
>300 [7620] = +5% / -0

ALL DIMENSIONS ARE FOR REFERENCE ONLY AND SUBJECT TO CHANGE WITHOUT NOTICE

<p>Fairview Microwave an INFINIT[®] brand</p> <p>Website: www.FairviewMicrowave.com Phone: 1.800.715.4396 1.972.649.6678</p>		 INTERPRET ALL DIMENSIONS AND TOLERANCES PER ASME Y14.5 SHEET SCALE: NONE SHEET: 1 OF 1
DESCRIPTION SMA MALE TO MINI SMP FEMALE CABLE RG405 TYPE .086 COAX WITH HEAT SHRINK		
SIZE	CAGE CODE	ITEM NO.
A	3FKR5	DZINN
DRAWN BY		REV
FMC01083		A

REVISION		DATE	CHANGED BY	APPROVED
ZONE	REV			
	A	02/17/2023	DZINN	AGANWANI
DESCRIPTION				
INITIAL RELEASE				