

30 dB Fixed Attenuator SMA Male (Plug) to SMA Female (Jack) DC to 18 GHz Rated to 2 Watt Stainless Steel Body 1.3:1 VSWR



**FMAT7620-30**

**Features**

- DC to 18 GHz Frequency Range
- SMA Connectorized Design
- Attenuation 30 dB  $\pm$ 0.8 dB
- Max Power 2 Watts (CW)
- Max VSWR of 1.3:1

**Applications**

- Instrumentation
- Precision Measurements
- Prototyping and Characterization
- Production Systems

**Description**

Fairview Microwave carries a broad selection of fixed attenuators with a wide range of attenuation levels, frequency ranges, and power dissipation ranges. Also known as RF pads, RF microwave attenuators lower the amplitude of a signal (or attenuate) a known amount. These attenuator pads can be used in a wide variety of applications including reducing a signal level to protect measurement equipment or other circuitry, extending the range of power meters and amplifiers, and impedance matching circuits by reducing the VSWR seen by adjacent components. RF attenuators can prevent signal overload in amplifiers, receivers and detectors, adjusting the signal level to a range that is optimal.

Few RF components are as commonly used as fixed coaxial attenuators, and Fairview Microwave carries one of the largest in-stock varieties and ships them same day. The FMAT7620-30 is a 30 dB Fixed Attenuator that operates from DC to 18 GHz and is rated to 2 Watts. The versatile coaxial package uses SMA male to SMA female connectors.

**Electrical Specifications**

Description	Minimum	Typical	Maximum	Units
Frequency Range	DC		18	GHz
Impedance		50		Ohms
Nominal Attenuation		30		dB
Attenuation Accuracy		$\pm$ 0.8		dB
VSWR			1.3:1	
Input Power, CW			2	Watts
Derated linearly to 0.5W @ 125°C				
Input Power, Peak			500	Watts
5 $\mu$ Sec PW, 0.4% duty cycle				

**Mechanical Specifications**

**Size**

- Length 0.98 in [24.89 mm]
- Width/Diameter 0.31 in [7.87 mm]
- Height 0.31 in [7.87 mm]
- Weight 0.05 lbs [22.68 g]
- Body Material and Plating Stainless Steel

**Configuration**

- Design Fixed, Bidirectional
- Package Style Connectorized

30 dB Fixed Attenuator SMA Male (Plug) to SMA Female (Jack) DC to 18 GHz Rated to 2 Watt Stainless Steel Body 1.3:1 VSWR



## FMAT7620-30

### Connectors

Description	Connector 1	Connector 2
Type	SMA Male	SMA Female
Contact Material and Plating	Brass, Gold	Beryllium Copper, Gold
Body Material and Plating	Stainless Steel	Stainless Steel

### Environmental Specifications

#### Temperature

Operating Range -55 to +125 deg C

**Compliance Certifications** (see [product page](#) for current document)

### Plotted and Other Data

Notes:

### Typical Performance Data

30 dB Fixed Attenuator SMA Male (Plug) to SMA Female (Jack) DC to 18 GHz Rated to 2 Watt Stainless Steel Body 1.3:1 VSWR from Fairview Microwave is in-stock and available to ship same-day. All of our RF/microwave products are available off-the-shelf from our ISO 9001:2008 certified facilities in Lewisville, Texas. Fairview Microwave is RF on-demand.

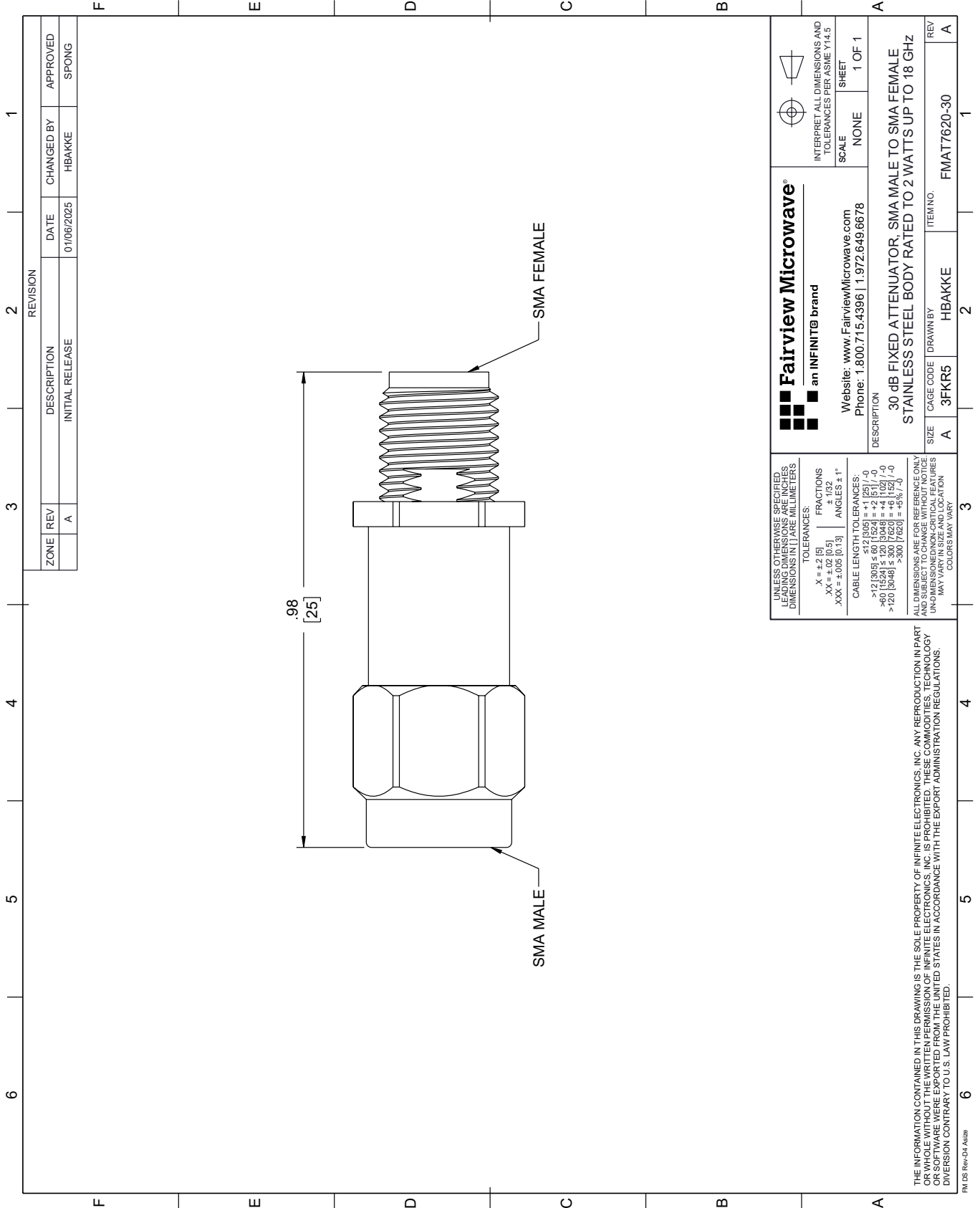
For additional information on this product, please click the following link: [30 dB Fixed Attenuator SMA Male \(Plug\) to SMA Female \(Jack\) DC to 18 GHz Rated to 2 Watt Stainless Steel Body 1.3:1 VSWR FMAT7620-30](#)

URL: <https://www.fairviewmicrowave.com/30db-fixed-attenuator-sma-male-sma-female-2-watts-fmat7620-30-p.aspx>

The information contained within this document is accurate to the best of our knowledge and representative of the part described herein. It may be necessary to make modifications to the part and/or the documentation of the part in order to implement improvements. Fairview Microwave reserves the right to make such changes as required. Unless otherwise stated, all specifications are nominal. Fairview Microwave does not make any representation or warranty regarding the suitability of the part described herein for any particular purpose, and Fairview Microwave does not assume liability arising out of the use of any part or document.

# FMAT7620-30 CAD Drawing

30 dB Fixed Attenuator SMA Male (Plug) to SMA Female (Jack) DC to 18 GHz Rated to 2 Watt Stainless Steel Body 1.3:1 VSWR



REVISION		DATE	CHANGED BY	APPROVED
ZONE	REV	DESCRIPTION		
	A	INITIAL RELEASE	HBAKKE	SPONG

**Fairview Microwave®**  
an INFINIT® brand

Website: [www.FairviewMicrowave.com](http://www.FairviewMicrowave.com)  
Phone: 1.800.715.4396 | 1.972.649.6678

INTERPRET ALL DIMENSIONS AND TOLERANCES PER ASME Y14.5  
SCALE NONE SHEET 1 OF 1

UNLESS OTHERWISE SPECIFIED, LEADING DIMENSIONS ARE IN INCHES AND UNLEADING DIMENSIONS ARE IN MILLIMETERS

TOLERANCES:  
 .X = ±.2 [5] FRACTIONS ± 1/32  
 .XX = ±.02 [0.5] ANGLES ± 1°  
 .XXX = ±.005 [0.13]

CABLE LENGTH TOLERANCES:  
 <12 [305] ≤ 60 [1524] = ±.125 [-0  
 >60 [1524] ≤ 120 [3048] = ±.102 [-0  
 >120 [3048] ≤ 300 [7620] = ±.078 [-0

ALL DIMENSIONS ARE FOR REFERENCE ONLY. DIMENSIONS OF CRITICAL FEATURES MAY VARY IN SIZE AND LOCATION. COLORS MAY VARY.

DESCRIPTION  
30 dB FIXED ATTENUATOR, SMA MALE TO SMA FEMALE  
STAINLESS STEEL BODY RATED TO 2 WATTS UP TO 18 GHz

SIZE A CAGE CODE 3FKR5 DRAWN BY HBAKKE ITEM NO. FMAT7620-30  
REV A

THE INFORMATION CONTAINED IN THIS DRAWING IS THE SOLE PROPERTY OF INFINITE ELECTRONICS, INC. ANY REPRODUCTION IN PART OR WHOLE WITHOUT THE WRITTEN PERMISSION OF INFINITE ELECTRONICS, INC. IS PROHIBITED. THESE COMMODITIES, TECHNOLOGY OR SOFTWARE WERE EXPORTED FROM THE UNITED STATES IN ACCORDANCE WITH THE EXPORT ADMINISTRATION REGULATIONS. DIVERSION CONTRARY TO U.S. LAW PROHIBITED.

FM DS Rev-D4 A42b