

2 dB Fixed Attenuator SMA Male (Plug) to SMA Female (Jack) DC to 18 GHz Rated to 2 Watt Stainless Steel Body 1.3:1 VSWR



FMAT7620-2

Features

- DC to 18 GHz Frequency Range
- SMA Connectorized Design
- Attenuation 2 dB \pm 1 dB
- Max Power 2 Watts (CW)
- Max VSWR of 1.3:1

Applications

- Instrumentation
- Precision Measurements
- Prototyping and Characterization
- Production Systems

Description

Fairview Microwave carries a broad selection of fixed attenuators with a wide range of attenuation levels, frequency ranges, and power dissipation ranges. Also known as RF pads, RF microwave attenuators lower the amplitude of a signal (or attenuate) a known amount. These attenuator pads can be used in a wide variety of applications including reducing a signal level to protect measurement equipment or other circuitry, extending the range of power meters and amplifiers, and impedance matching circuits by reducing the VSWR seen by adjacent components. RF attenuators can prevent signal overload in amplifiers, receivers and detectors, adjusting the signal level to a range that is optimal.

Few RF components are as commonly used as fixed coaxial attenuators, and Fairview Microwave carries one of the largest in-stock varieties and ships them same day. The FMAT7620-2 is a 2 dB Fixed Attenuator that operates from DC to 18 GHz and is rated to 2 Watts. The versatile coaxial package uses SMA male to SMA female connectors.

Electrical Specifications

Description	Minimum	Typical	Maximum	Units
Frequency Range	DC		18	GHz
Impedance		50		Ohms
Nominal Attenuation		2		dB
Attenuation Accuracy		\pm 0.5	\pm 1	dB
VSWR			1.3:1	
Input Power, CW			2	Watts
Derated linearly to 0.5W @ 125°C				
Input Power, Peak			500	Watts
5 μ Sec PW, 0.4% duty cycle				

Mechanical Specifications

Size

- Length 0.86 in [21.84 mm]
- Width/Diameter 0.31 in [7.87 mm]
- Height 0.31 in [7.87 mm]
- Weight 0.1 lbs [45.36 g]
- Body Material and Plating Stainless Steel

Configuration

- Design Fixed, Bidirectional
- Package Style Connectorized

2 dB Fixed Attenuator SMA Male (Plug) to SMA Female (Jack) DC to 18 GHz Rated to 2 Watt Stainless Steel Body 1.3:1 VSWR



FMAT7620-2

Connectors

Description	Connector 1	Connector 2
Type	SMA Male	SMA Female
Contact Material and Plating	Brass, Gold	Beryllium Copper, Gold
Body Material and Plating	Stainless Steel	Stainless Steel

Environmental Specifications

Temperature

Operating Range -55 to +125 deg C

Compliance Certifications (see [product page](#) for current document)

Plotted and Other Data

Notes:

Typical Performance Data

2 dB Fixed Attenuator SMA Male (Plug) to SMA Female (Jack) DC to 18 GHz Rated to 2 Watt Stainless Steel Body 1.3:1 VSWR from Fairview Microwave is in-stock and available to ship same-day. All of our RF/microwave products are available off-the-shelf from our ISO 9001:2008 certified facilities in Lewisville, Texas. Fairview Microwave is RF on-demand.

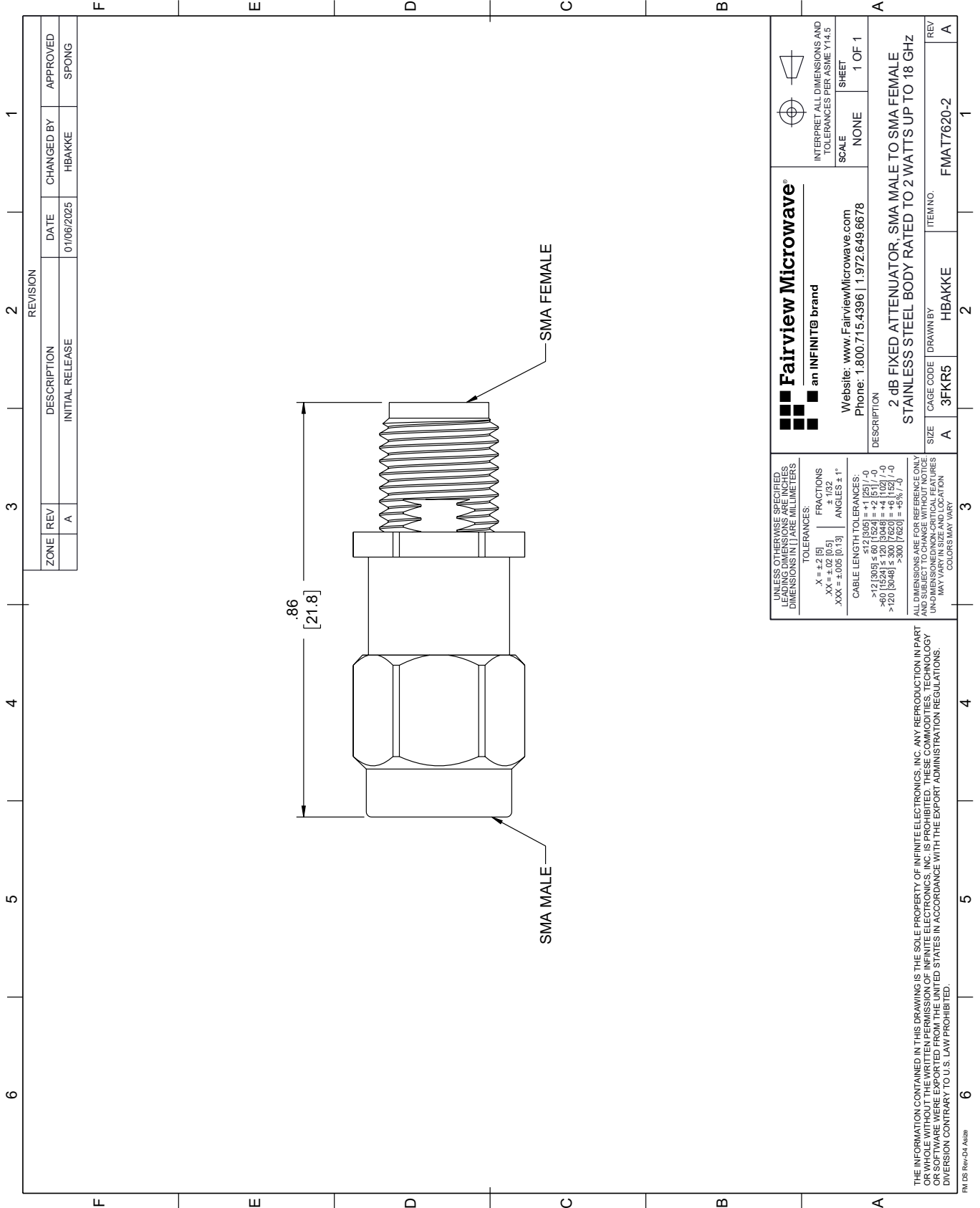
For additional information on this product, please click the following link: [2 dB Fixed Attenuator SMA Male \(Plug\) to SMA Female \(Jack\) DC to 18 GHz Rated to 2 Watt Stainless Steel Body 1.3:1 VSWR FMAT7620-2](#)

URL: <https://www.fairviewmicrowave.com/2db-fixed-attenuator-sma-male-sma-female-2-watts-fmat7620-2-p.aspx>

The information contained within this document is accurate to the best of our knowledge and representative of the part described herein. It may be necessary to make modifications to the part and/or the documentation of the part in order to implement improvements. Fairview Microwave reserves the right to make such changes as required. Unless otherwise stated, all specifications are nominal. Fairview Microwave does not make any representation or warranty regarding the suitability of the part described herein for any particular purpose, and Fairview Microwave does not assume liability arising out of the use of any part or document.

FMAT7620-2 CAD Drawing

2 dB Fixed Attenuator SMA Male (Plug) to SMA Female (Jack) DC to 18 GHz Rated to 2 Watt Stainless Steel Body 1.3:1 VSWR



ZONE	REV	DESCRIPTION	DATE	CHANGED BY	APPROVED
	A	INITIAL RELEASE	01/06/2025	HBAKKE	SPONG

Fairview Microwave®
an INFINIT® brand

Website: www.FairviewMicrowave.com
Phone: 1.800.715.4396 | 1.972.649.6678

INTERPRET ALL DIMENSIONS AND TOLERANCES PER ASME Y14.5
SCALE: NONE
SHEET: 1 OF 1

DESCRIPTION: 2 dB FIXED ATTENUATOR, SMA MALE TO SMA FEMALE STAINLESS STEEL BODY RATED TO 2 WATTS UP TO 18 GHz

SIZE	CAGE CODE	DRAWN BY	ITEM NO.
A	3FKR5	HBAKKE	FMAT7620-2

REV: A

UNLESS OTHERWISE SPECIFIED, LEADING DIMENSIONS ARE IN INCHES AND UNLEADING DIMENSIONS ARE IN MILLIMETERS

TOLERANCES:
 .X = ±.2 (5) FRACTIONS ± 1/32
 .XX = ±.02 (0.5) ± 1/32
 .XXX = ±.005 (0.13) ANGLES ± 1°

CABLE LENGTH TOLERANCES:
 <12 (305) ±.60 (15.24) = ±.2 (5) / -0
 >12 (305) ≤ 60 (1524) = ±.2 (5) / -0
 >60 (1524) ≤ 120 (3048) = ±.4 (10.2) / -0
 >120 (3048) ≤ 300 (7620) = ±.8 (20) / -0

ALL DIMENSIONS ARE FOR REFERENCE ONLY. UNLESS OTHERWISE SPECIFIED, DIMENSIONS ARE FOR THE UNDIMENSIONED/NON-CRITICAL FEATURES. MAY VARY IN SIZE AND LOCATION. COLORS MAY VARY.

THE INFORMATION CONTAINED IN THIS DRAWING IS THE SOLE PROPERTY OF INFINITE ELECTRONICS, INC. ANY REPRODUCTION IN PART OR WHOLE WITHOUT THE WRITTEN PERMISSION OF INFINITE ELECTRONICS, INC. IS PROHIBITED. THESE COMMODITIES, TECHNOLOGY OR SOFTWARE ARE EXPORTED FROM THE UNITED STATES IN ACCORDANCE WITH THE EXPORT ADMINISTRATION REGULATIONS. DIVERSION CONTRARY TO U.S. LAW PROHIBITED.

FM DS Rev-D4 Alt2b