

10 dB Fixed Attenuator 2.2-5 Male (Plug) to 2.2-5 Female (Jack) DC to 6 GHz Rated to 10 Watts, Brass Body, 1.25:1 VSWR



FMAT7493-10

Features

- DC to 6 GHz Frequency Range
- 2.2-5 Connectorized Design
- Attenuation 10 dB \pm 1 dB
- Max Power 10 Watts (CW)
- Max VSWR of 1.25:1

Applications

- Instrumentation
- Precision Measurements
- Prototyping and Characterization
- Production Systems
- 5G Cellular bands

Description

Fairview Microwave carries a wide range of fixed attenuators with a broad selection of attenuation levels, frequency ranges, and power dissipation ranges. RF microwave attenuators (also known as RF pads) lower the amplitude of a signal (attenuate) a known amount and can be used in a wide variety of applications. These attenuator pads are used when a signal needs to be reduced to protect measurement equipment or other circuitry, to extend the range of power meters and amplifiers, and to impedance match circuits by reducing the VSWR seen by adjacent components. RF attenuators can prevent signal overload in amplifiers, receivers and detectors, adjusting the signal level to a range that is optimal. Few RF components are as commonly used as fixed coaxial attenuators, and Fairview Microwave carries one of the largest in-stock varieties and ships them same day. The 10 dB Fixed Attenuator FMAT7493-10 is rated to 10 Watts and operates from DC to 6 GHz.

Electrical Specifications

| Description | Minimum | Typical | Maximum | Units |
|------------------------|---------|---------|---------|-------|
| Frequency Range | DC | | 6 | GHz |
| Impedance | | 50 | | Ohms |
| Nominal Attenuation | | 10 | | dB |
| Attenuation Accuracy | | | \pm 1 | dB |
| VSWR | | | 1.25:1 | |
| Input Power, CW | | | 10 | Watts |
| Input Power, Peak | | | 100 | Watts |
| 8% Duty Cycle, 20us PW | | | | |

Mechanical Specifications

Size

| | |
|---------------------------|------------------------------|
| Length | 2.36 in [59.94 mm] |
| Width/Diameter | 0.79 in [20.07 mm] |
| Height | 0.79 in [20.07 mm] |
| Weight | 0.07 lbs [31.75 g] |
| Body Material and Plating | Brass, Copper-Tin-Zinc Alloy |

Configuration

| | |
|---------------|----------------------|
| Design | Fixed, Bidirectional |
| Design Type | Standard |
| Package Style | Connectorized |

10 dB Fixed Attenuator 2.2-5 Male (Plug) to 2.2-5 Female (Jack) DC to 6 GHz Rated to 10 Watts, Brass Body, 1.25:1 VSWR



FMAT7493-10

Connectors

| Description | Connector 1 | Connector 2 |
|------------------------------|--------------------------|--------------------------|
| Type | 2.2-5 Male | 2.2-5 Female |
| Contact Material and Plating | Beryllium Copper, Silver | Beryllium Copper, Silver |
| Dielectric Type | PTFE | PTFE |
| Body Material and Plating | Brass, Tri-Metal | Brass, Tri-Metal |

Environmental Specifications

Temperature

| | |
|-----------------|--------------------|
| Operating Range | -40 to +75 deg C |
| Storage Range | -50 to +85 deg C |
| Humidity | <95% |
| Shock | IEC 60068-2-27 |
| Vibration | IEC 60068-2-6-Fc |
| Altitude | <5000m |
| Thermal Shock | IEC 60068 -2-14-Na |

Compliance Certifications (see [product page](#) for current document)

Plotted and Other Data

Notes:

Typical Performance Data

10 dB Fixed Attenuator 2.2-5 Male (Plug) to 2.2-5 Female (Jack) DC to 6 GHz Rated to 10 Watts, Brass Body, 1.25:1 VSWR from Fairview Microwave is in-stock and available to ship same-day. All of our RF/microwave products are available off-the-shelf from our ISO 9001:2008 certified facilities in Lewisville, Texas. Fairview Microwave is RF on-demand.

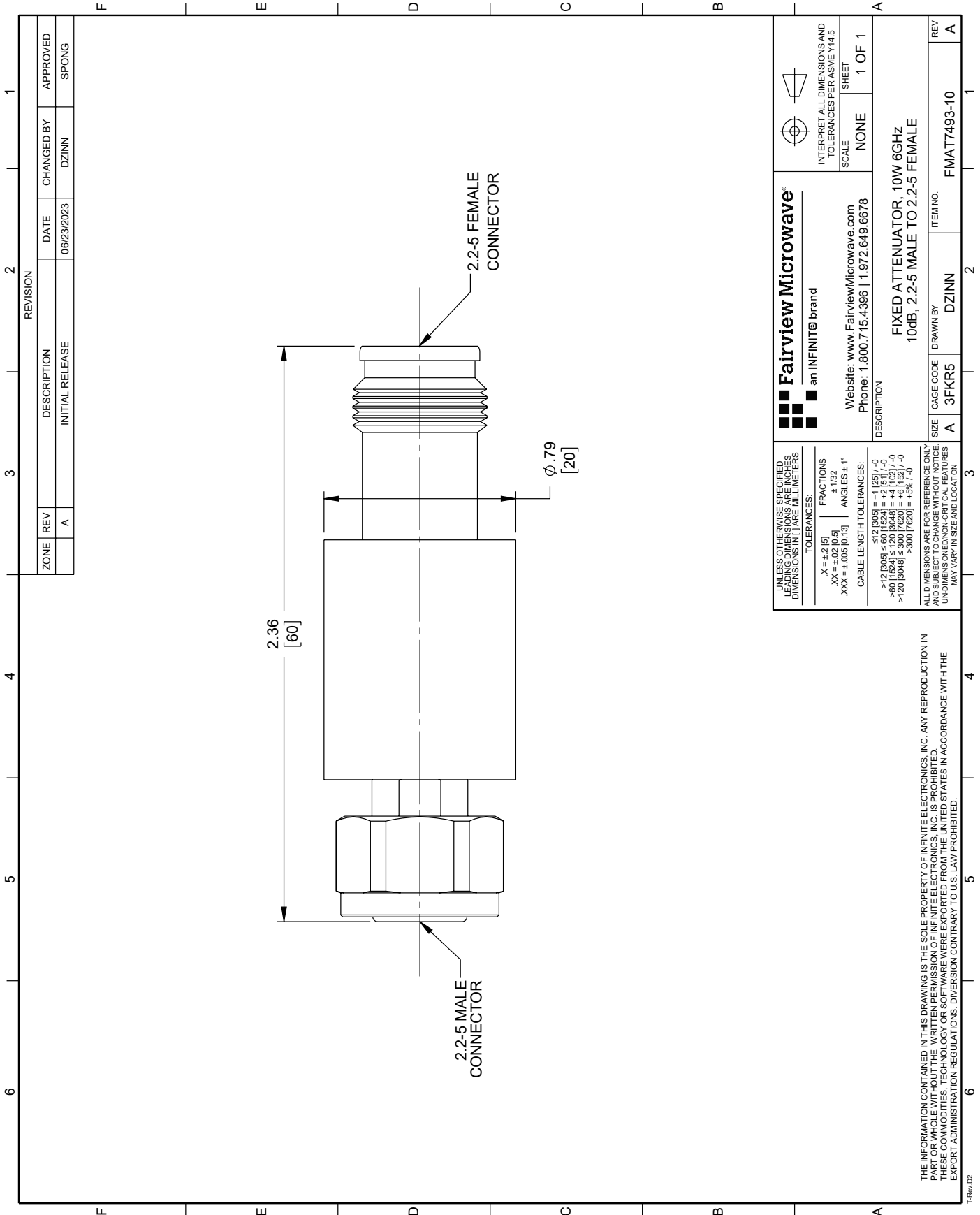
For additional information on this product, please click the following link: [10 dB Fixed Attenuator 2.2-5 Male \(Plug\) to 2.2-5 Female \(Jack\) DC to 6 GHz Rated to 10 Watts, Brass Body, 1.25:1 VSWR FMAT7493-10](#)

URL: <https://www.fairviewmicrowave.com/10db-fixed-attenuator-10-watts-fmat7493-10-p.aspx>

The information contained within this document is accurate to the best of our knowledge and representative of the part described herein. It may be necessary to make modifications to the part and/or the documentation of the part in order to implement improvements. Fairview Microwave reserves the right to make such changes as required. Unless otherwise stated, all specifications are nominal. Fairview Microwave does not make any representation or warranty regarding the suitability of the part described herein for any particular purpose, and Fairview Microwave does not assume liability arising out of the use of any part or document.

FMAT7493-10 CAD Drawing

10 dB Fixed Attenuator 2.2-5 Male (Plug) to 2.2-5 Female (Jack) DC to 6 GHz Rated to 10 Watts, Brass Body, 1.25:1 VSWR



| ZONE | REV | DESCRIPTION | DATE | CHANGED BY | APPROVED |
|------|-----|-----------------|------------|------------|----------|
| | A | INITIAL RELEASE | 06/23/2023 | DZINN | SPONG |

| | | | | |
|--|--|---|-----------------------|--|
| Fairview Microwave an INFINITI® brand | | Website: www.FairviewMicrowave.com Phone: 1.800.715.4396 1.972.649.6678 | | INTERPRET ALL DIMENSIONS AND TOLERANCES PER ASME Y14.5 SCALE: NONE SHEET: 1 OF 1 |
| UNLESS OTHERWISE SPECIFIED LEADING DIMENSIONS ARE INCHES DIMENSIONS IN [] ARE MILLIMETERS TOLERANCES: X = +.2 (5) XX = +.02 (0.5) XXX = ±.005 (0.13) FRACTIONS ± 1/32 ANGLES ± 1° | | DESCRIPTION FIXED ATTENUATOR, 10W 6GHZ 10dB, 2.2-5 MALE TO 2.2-5 FEMALE | | |
| CABLE LENGTH TOLERANCES: >12 [305] ≤ 60 [1524] = +.2 [51] / -0 >6 [152] ≤ 300 [7620] = +.1 [25] / -0 >120 [3048] ≤ 300 [7620] = +.1 [25] / -0 >300 [7620] = +5% / -0 | | SIZE: A CAGE CODE: 3FKR5 DRAWN BY: DZINN | ITEM NO.: FMAT7493-10 | REV: A |
| ALL DIMENSIONS ARE FOR REFERENCE ONLY. DIMENSIONS ARE SUBJECT TO CHANGE WITHOUT NOTICE AND SUBJECT TO CHANGE WITH NEW TECHNOLOGY. UNDIMENSIONED/NON-CRITICAL FEATURES MAY VARY IN SIZE AND LOCATION. | | | | |

THE INFORMATION CONTAINED IN THIS DRAWING IS THE SOLE PROPERTY OF INFINITE ELECTRONICS, INC. ANY REPRODUCTION IN PART OR WHOLE WITHOUT THE WRITTEN PERMISSION OF INFINITE ELECTRONICS, INC. IS PROHIBITED. THESE COMMODITIES, TECHNOLOGY OR SOFTWARE WERE EXPORTED FROM THE UNITED STATES IN ACCORDANCE WITH THE EXPORT ADMINISTRATION REGULATIONS. DIVERSION CONTRARY TO U.S. LAW PROHIBITED.

TRev.02