

32 dBi Active GPS/BeiDou Magnet Mount Antenna  
RHCP 1561/1575 MHz, RG174 SMA Male IP66



**FMANGPS1015**

**Features**

- SMA Male
- Right Hand Circular Polarized
- 28 dB LNA w/ low 1.5 dB Noise Figure
- Neodymium Rare-Earth Magnet
- IP66 Rated

**Applications**

- GPS L1/BDS B1
- High Accuracy Global Positioning
- Precision Agriculture, Mining and Construction
- Law Enforcement and Public Safety
- Vehicle Fleet Management

**Description**

Fairview Microwave's Active GNSS Antenna FMANGPS1015 is Right Hand Circular Polarized with an integrated Neodymium Rare Earth Magnet for a secure mount. The FMANGPS1015 is an active GPS L1 and BDS B1 band antenna with 32 dBi Gain. These Magnet Mount active GNSS antenna units are ideally suited for use on vehicles where low profile, low drag, non-penetrating style antennas are needed.

Our GNSS antenna specialists are ready and available to answer any questions you may have on the FMANGPS1015. This high quality SMA male antenna meets GPS L1 and BDS B1 requirements by operating in the 1559 MHz to 1577 MHz frequency range.

The FMANGPS1015 GNSS antenna series from Fairview Microwave are designed for mobile, vehicle, or fleet services to receive GNSS signals from satellite constellations to triangulate geolocations for navigation, tracking, and surveying.

**Configuration**

Design	GPS Active
Band Type	Single
Polarization	RHCP
Cable Type	RG174
Connector Type	SMA Male
Number of Ports	1

**Electrical Specifications**

Description	Minimum	Typical	Maximum	Units
Frequency Range	1,559		1,577	MHz
Input VSWR			2:1	
Output VSWR			2:1	
Impedance		50		Ohms
Gain		32		dBi
Gain Variation		±5		
Noise Figure			1.5	
Operating DC Voltage	3		3.6	
Current	6	9	12	mA

32 dBi Active GPS/BeiDou Magnet Mount Antenna  
RHCP 1561/1575 MHz, RG174 SMA Male IP66



## FMANGPS1015

### Specifications by Band

Description	Band 1	Band 2	Band 3	Band 4	Band 5	Units
Range	1.559 to 1.563	1.574 to 1.577				GHz
Center Frequency	1.561	1.575				GHz

### Mechanical Specifications

#### Size

Length	2 in [50.8 mm]
Width	1.7 in [43.18 mm]
Height	0.7 in [17.78 mm]
Weight	1 lbs [453.59 g]

### Environmental Specifications

#### Temperature

Ingress Protection	IP66
--------------------	------

**Compliance Certifications** (see [product page](#) for current document)

### Plotted and Other Data

Notes:

## 32 dBi Active GPS/BeiDou Magnet Mount Antenna RHCP 1561/1575 MHz, RG174 SMA Male IP66



### FMANGPS1015

#### Typical Radiation Pattern

#### Appendix

**Electrical Downtilt:** Angle in the antenna's elevation pattern in which the maximum gain occurs.

**Gain:** Antenna's average gain.

**Front to Back Ratio @ 180°±30°:** Average difference between the antenna's maximum gain and the maximum gain in the antenna's back lobe over ±30° angles.

**Cross-polarization Ratio (dB):** Typical difference between the co-polarization and cross-polarization gain across the sector's 3 dB Beam Width.

Dedicated to serving the needs of the Wireless Internet Service Provider (WISP) market, KP Performance Antennas offers purpose built products that reliably perform in the field. KP Performance Antennas product line consists of Yagi, Grid, Omni, Dish and other style antennas that operate in the 900 MHz, 2.4 GHz, 3 GHz, and 5 GHz frequencies.

32 dBi Active GPS/BeiDou Magnet Mount Antenna RHCP 1561/1575 MHz, RG174 SMA Male IP66 from Fairview Microwave is in-stock and available to ship same-day. All of our RF/microwave products are available off-the-shelf from our ISO 9001:2008 certified facilities in Lewisville, Texas. Fairview Microwave is RF on-demand.

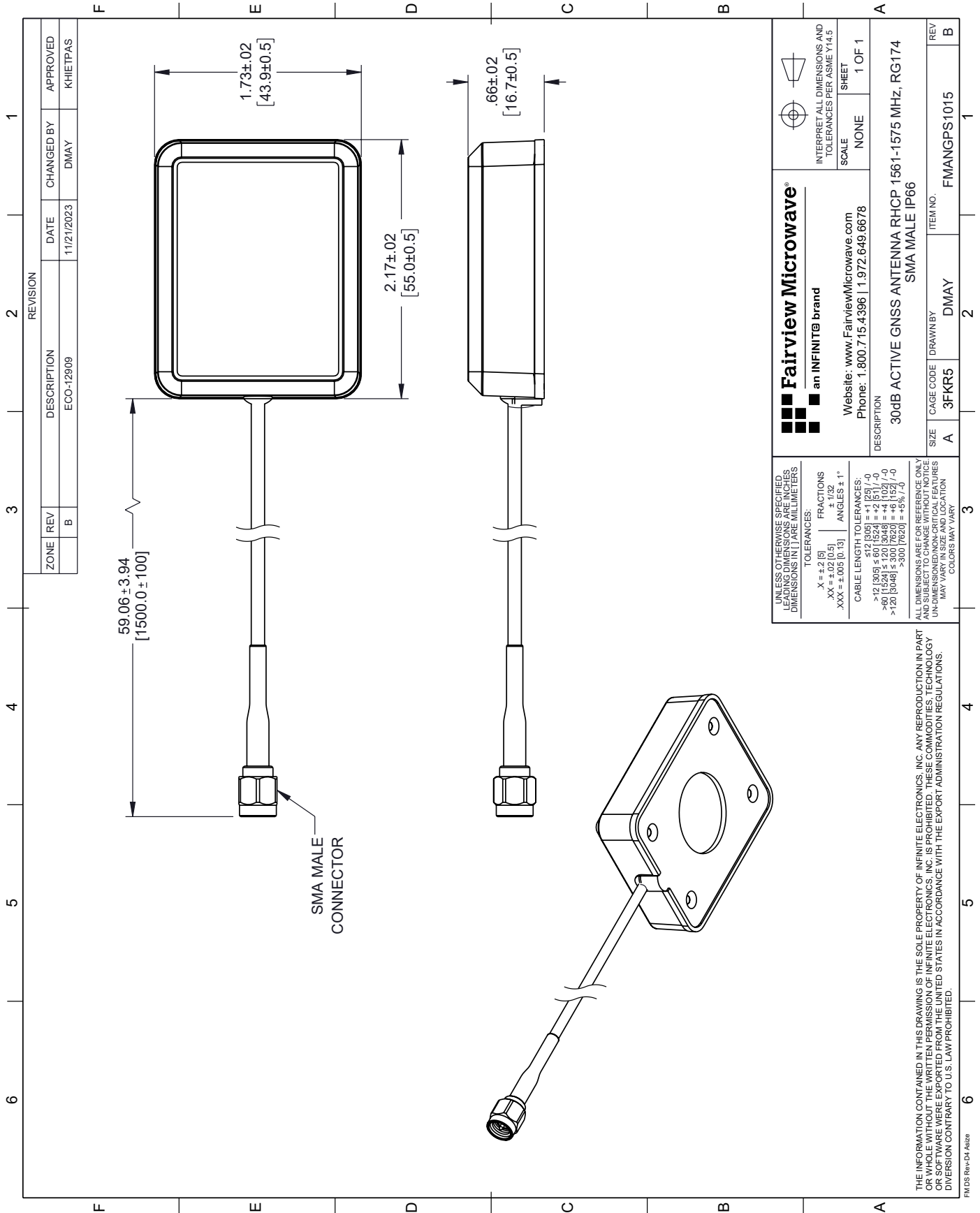
For additional information on this product, please click the following link: [32 dBi Active GPS/BeiDou Magnet Mount Antenna RHCP 1561/1575 MHz, RG174 SMA Male IP66 FMANGPS1015](https://www.fairviewmicrowave.com/gps-active-antenna-1.559-to-1.577-ghz-32-dbi-gain-sma-male-connector-rh-cp-fmangps1015-p.aspx)

URL: <https://www.fairviewmicrowave.com/gps-active-antenna-1.559-to-1.577-ghz-32-dbi-gain-sma-male-connector-rh-cp-fmangps1015-p.aspx>

The information contained within this document is accurate to the best of our knowledge and representative of the part described herein. It may be necessary to make modifications to the part and/or the documentation of the part in order to implement improvements. Fairview Microwave reserves the right to make such changes as required. Unless otherwise stated, all specifications are nominal. Fairview Microwave does not make any representation or warranty regarding the suitability of the part described herein for any particular purpose, and Fairview Microwave does not assume liability arising out of the use of any part or document.

# FMANGPS1015 CAD Drawing

32 dBi Active GPS/BeiDou Magnet Mount Antenna RHCP 1561/1575 MHz, RG174 SMA Male IP66



REVISION		DATE	CHANGED BY	APPROVED
ZONE	REV	DESCRIPTION		
	B	ECO-129/09	DMAJ	KHIETPAS

<p><b>Fairview Microwave®</b> an INFINIT® brand</p> <p>Website: <a href="http://www.FairviewMicrowave.com">www.FairviewMicrowave.com</a> Phone: 1.800.715.4396   1.972.649.6678</p>		<p>INTERPRET ALL DIMENSIONS AND TOLERANCES PER ASME Y14.5</p> <p>SCALE: NONE SHEET: 1 OF 1</p>
<p>DESCRIPTION: 30dB ACTIVE GNSS ANTENNA RHCP 1561-1575 MHz, RG174 SMA MALE IP66</p>		
SIZE: A	CAGE CODE: 3FKR5	ITEM NO.: FMANGPS1015
SIZE: B	CAGE CODE: DMAJ	ITEM NO.: FMANGPS1015

UNLESS OTHERWISE SPECIFIED LEADING DIMENSIONS ARE IN INCHES DIMENSIONS IN PAREMILLIMETERS

TOLERANCES:  
 .X = ±.015 | FRACTIONS ± 1/32  
 .XX = ±.005 (0.13) | ANGLES ± 1°

CABLE LENGTH TOLERANCES:  
 >12 (305) ≤ 60 (1524) = +1 (25) / -0  
 >60 (1524) ≤ 120 (3048) = +4 (102) / -0  
 >120 (3048) ≤ 300 (7620) = +5 (127) / -0  
 >300 (7620) = +5 (127) / -0

ALL DIMENSIONS ARE FOR REFERENCE ONLY. DIMENSIONS OF THE PART SHALL BE THE GOVERNOR. UNDIMENSIONED CRITICAL FEATURES MAY VARY IN SIZE AND LOCATION. COLORS MAY VARY.

THE INFORMATION CONTAINED IN THIS DRAWING IS THE SOLE PROPERTY OF INFINITE ELECTRONICS, INC. ANY REPRODUCTION IN PART OR WHOLE WITHOUT THE WRITTEN PERMISSION OF INFINITE ELECTRONICS, INC. IS PROHIBITED. THESE COMMODITIES, TECHNOLOGY OR SOFTWARE WERE EXPORTED FROM THE UNITED STATES IN ACCORDANCE WITH THE EXPORT ADMINISTRATION REGULATIONS. DIVERSION CONTRARY TO U.S. LAW PROHIBITED.