

RF Adapter, SMPS Female (Jack) to SMPS Female (Jack) Spring Loaded

SMPS female to SMPS female adapter part number FMAD9989 from Fairview Microwave is in-stock and ships same day. This Fairview SMPS to SMPS adapter has a female to female gender configuration. FMAD9989 SMPS female to SMPS female adapter is gold plated and operates to 40 GHz.

RF adapters can be used to enable connections between two connector types that would otherwise not mate. Certain RF adapter configurations can also be used to protect connectors on expensive equipment where the number of connect and disconnect cycles is high. An RF, microwave, or millimeter wave adapter is connected to the equipment and the commonly changed connection is made with the adapter which can be easily replaced when it wears out after high usage; such adapters are referred to as connector savers. Fairview Microwave also offers bulkhead, panel mount, hermetically sealed, reverse polarity, and isolated ground adapter varieties to serve all of your RF, microwave and millimeter wave needs.

Electrical Specifications

| Description | Min | Typ | Max | Units |
|-----------------|-----|-----|------|-------|
| Frequency Range | DC | | 40 | GHz |
| Insertion Loss | | | 0.82 | dB |

Mechanical Specifications

Size

| | |
|--------|--------------------|
| Length | 0.65 in [16.54 mm] |
| Width | 0.13 in [3.40 mm] |
| Height | 0.13 in [3.40 mm] |
| Weight | 0.01 lbs [4.99 g] |

| Description | Connector 1 | Connector 2 |
|--------------------|-------------|-------------|
| Type | SMPS Female | SMPS Female |
| Polarity | Standard | Standard |
| Mating Cycles, Min | 500 | 500 |

Mechanical Specification Notes:
*500 cycles when mated with Smooth Bore and 100 cycles when mated with Full Detent male connector.



Configuration:

- SMPS Female Connector 1
- SMPS Female Connector 2
- 50 Ohm
- Straight Body Geometry

Features:

- 50 µin minimum contact plating
- Gold Plated Beryllium Copper Contact

Applications:

- General Purpose Test

Fairview Microwave
301 Leora Ln., Suite 100
Lewisville, TX 75056
Tel: 1-800-715-4396 / (972) 649-6678
Fax: (972) 649-6689
www.fairviewmicrowave.com
sales@fairviewmicrowave.com

Material Specifications

| Description | Connector 1 | Connector 2 |
|-----------------------------|------------------|------------------|
| Type | SMPS Female | SMPS Female |
| Contact Material | Beryllium Copper | Beryllium Copper |
| Contact Plating | Gold | Gold |
| Contact Plating Spec. | 50 µin minimum | 50 µin minimum |
| Insulation Material | PTFE | PTFE |
| Outer Contact Material | Beryllium Copper | Beryllium Copper |
| Outer Contact Plating | Gold | Gold |
| Outer Contact Plating Spec. | 50 µin minimum | 50 µin minimum |
| Body Material | Beryllium Copper | Beryllium Copper |
| Body Plating | Gold | Gold |
| Body Plating Spec. | 30 µin minimum | 30 µin minimum |

Environmental Specifications
Temperature

Operating Range

-55 to -165 deg C

Humidity

MIL-STD-202, Method 106, Less Step 7B

Shock

MIL-STD-202, Method 213, Condition I

Vibration

MIL-STD-202, Method 204, Condition D

Thermal Shock

MIL-STD-202, Method 107, Condition B

Compliance Certifications (see [product page](#) for current document)

Plotted and Other Data

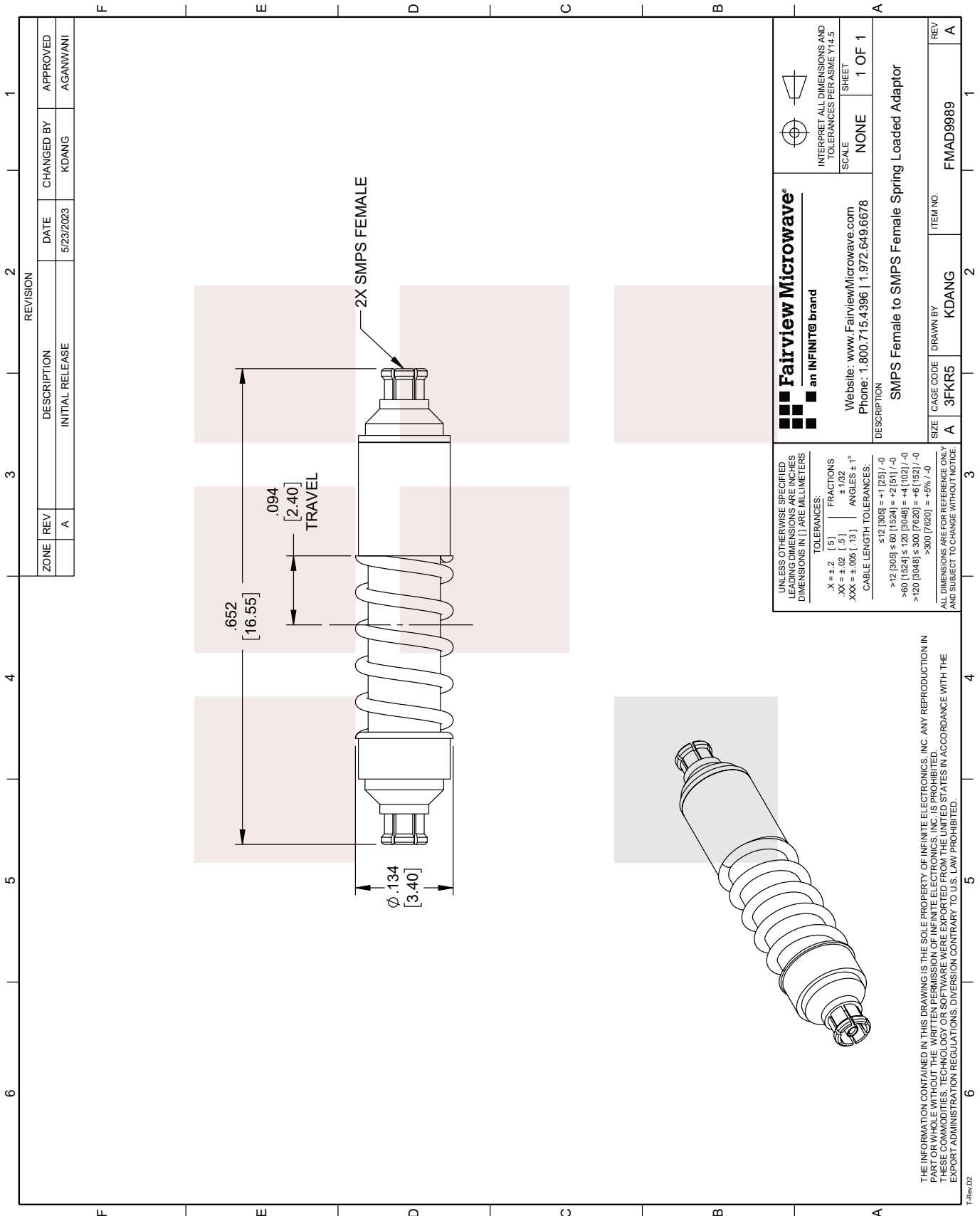
Notes:

RF Adapter, SMPS Female (Jack) to SMPS Female (Jack) Spring Loaded from Fairview Microwave is in-stock and available to ship same-day. All of our RF/microwave products are available off-the-shelf from our ISO 9001:2008 certified facilities in Lewisville, Texas. Fairview Microwave is RF on-demand.

For additional information on this product, please click the following link: [RF Adapter, SMPS Female \(Jack\) to SMPS Female \(Jack\) Spring Loaded FMAD9989](#)

URL: <https://www.fairviewmicrowave.com/smps-female-to-smps-female-adapter-mil-std-202-method-106-less-step-7b-with-beryllium-copper-body-fmad9989-p.aspx>

The information contained in this document is accurate to the best of our knowledge and representative of the part described herein. It may be necessary to make modifications to the part and/or the documentation of the part, in order to implement improvements. Fairview Microwave reserves the right to make such changes as required. Unless otherwise stated, all specifications are nominal. Fairview Microwave does not make any representation or warranty regarding the suitability of the part described herein for any particular purpose, and Fairview Microwave does not assume any liability arising out of the use of any part or documentation.



| ZONE | | REVISION | | DESCRIPTION | | DATE | | CHANGED BY | | APPROVED | |
|------|--|----------|--|-----------------|--|-----------|--|------------|--|----------|--|
| A | | | | INITIAL RELEASE | | 5/23/2023 | | KDANG | | AGANWANI | |

| | | | |
|--|------------------|---|--------------------|
| <p>Fairview Microwave® an INFINITE® brand</p> <p>Website: www.FairviewMicrowave.com Phone: 1.800.715.4396 1.972.649.6678</p> | | <p>INTERPRET ALL DIMENSIONS AND TOLERANCES PER ASME Y14.5</p> <p>SCALE: NONE</p> <p>SHEET: 1 OF 1</p> | |
| <p>DESCRIPTION: SMPS Female to SMPS Female Spring Loaded Adaptor</p> | | | |
| SIZE: A | CAGE CODE: 3FKR5 | DRAWN BY: KDANG | ITEM NO.: FMAD9989 |
| REV: A | | | |

UNLESS OTHERWISE SPECIFIED, LEADING DIMENSIONS ARE IN INCHES DIMENSIONS IN [] ARE MILLIMETERS

TOLERANCES:
 .X = ± .2 [5] FRACTIONS ± 1/32
 .XX = ± .02 [.5] ANGLES ± 1°
 .XXX = ± .005 [.13]

CABLE LENGTH TOLERANCES:
 ≤ 12 [305] = +1 [25] / -0
 > 12 [305] ≤ 60 [1524] = +2 [51] / -0
 > 60 [1524] ≤ 120 [3048] = +4 [102] / -0
 > 120 [3048] ≤ 300 [7620] = +6 [152] / -0
 > 300 [7620] = +5% / -0

ALL DIMENSIONS ARE FOR REFERENCE ONLY AND SUBJECT TO CHANGE WITHOUT NOTICE.

THE INFORMATION CONTAINED IN THIS DRAWING IS THE SOLE PROPERTY OF INFINITE ELECTRONICS, INC. ANY REPRODUCTION IN PART OR WHOLE WITHOUT THE WRITTEN PERMISSION OF INFINITE ELECTRONICS, INC. IS PROHIBITED. THESE COMMODITIES, TECHNOLOGY OR SOFTWARE WERE EXPORTED FROM THE UNITED STATES IN ACCORDANCE WITH THE EXPORT ADMINISTRATION REGULATIONS. DIVERSION CONTRARY TO U.S. LAW PROHIBITED.

T-Rev.D2