

## SMP Female (Jack) to SMP Female (Jack) Adapter



### FMAD9180

#### Configuration

- SMP Female Connector 1
- SMP Female Connector 2
- 50 Ohms Impedance
- Straight Body Geometry

#### Features

- VSWR of 1.4:1 max up to 40 GHz
- Gold Plated Beryllium Copper Contact
- VSWR of 1.4:1 max up to 40 GHz
- Gold Plated Beryllium Copper Contact

#### Applications

- General Purpose Test
- General Purpose Test

#### Description

SMP female to SMP female adapter part number FMAD9180 from Fairview Microwave is in-stock and ships same day. This Fairview SMP to SMP adapter has a female to female gender configuration. FMAD9180 SMP female to SMP female adapter is gold plated and operates to 40 GHz. The Fairview Microwave RF adapter provides good VSWR of 1.4:1 maximum.

adapters can be used to enable connections between two connector types that would otherwise not mate. Certain RF adapter configurations can also be used to protect connectors on expensive equipment where the number of connect and disconnect cycles is high. An RF, microwave, or millimeter wave adapter is connected to the equipment and the commonly changed connection is made with the adapter which can be easily replaced when it wears out after high usage; such adapters are referred to as connector savers. Fairview Microwave also offers bulkhead, panel mount, hermetically sealed, reverse polarity, and isolated ground adapter varieties to serve all of your RF, microwave and millimeter wave needs.

#### Electrical Specifications

Description	Minimum	Typical	Maximum	Units
Frequency Range	DC		40	GHz
Impedance		50		Ohms
VSWR			1.4:1	
Insertion Loss			0.76	dB

#### Mechanical Specifications

##### Size

Length	0.26 in [6.60 mm]
Width	0.13 in [3.30 mm]
Height	0.13 in [3.30 mm]
Weight	0.01 lbs [4.54 g]

##### Mechanical Specification Notes:

500 cycles when mated with Smooth Bore and 100 Cycles when mated with Full Detent male connector.

## SMP Female (Jack) to SMP Female (Jack) Adapter



### FMAD9180

#### Material Specifications

Description	Connector 1		Connector 2	
	Material	Plating	Material	Plating
Type	SMP Female		SMP Female	
Contact	Beryllium Copper	Gold	Beryllium Copper	Gold
Outer Conductor	Beryllium Copper	Gold	Beryllium Copper	Gold
Body	Beryllium Copper	Gold	Beryllium Copper	Gold

#### Environmental Specifications

##### Temperature

Operating Range -40 to +85 °C

**Compliance Certifications** (see [product page](#) for current document)

#### Plotted and Other Data

SMP Female (Jack) to SMP Female (Jack) Adapter from Fairview Microwave is in-stock and available to ship same-day. All of our RF/microwave products are available off-the-shelf from our ISO 9001:2008 certified facilities in Lewisville, Texas. Fairview Microwave is RF on-demand.

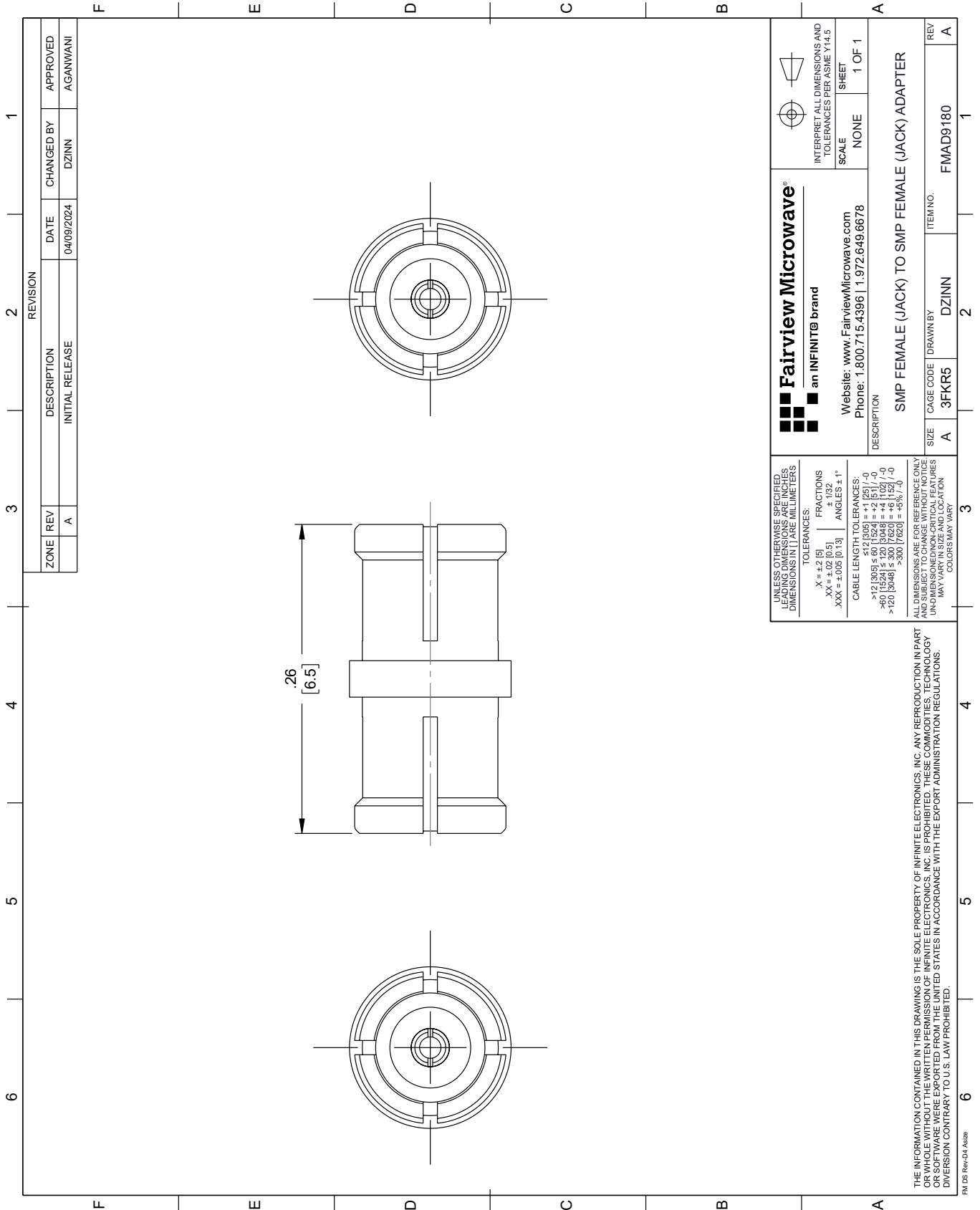
For additional information on this product, please click the following link: [SMP Female \(Jack\) to SMP Female \(Jack\) Adapter FMAD9180](#)

URL: <https://www.fairviewmicrowave.com/smp-female-to-smp-female-adapter-with-beryllium-copper-body-fmad9180-p.aspx>

The information contained within this document is accurate to the best of our knowledge and representative of the part described herein. It may be necessary to make modifications to the part and/or the documentation of the part in order to implement improvements. Fairview Microwave reserves the right to make such changes as required. Unless otherwise stated, all specifications are nominal. Fairview Microwave does not make any representation or warranty regarding the suitability of the part described herein for any particular purpose, and Fairview Microwave does not assume liability arising out of the use of any part or document.

# FMAD9180 CAD Drawing

## SMP Female (Jack) to SMP Female (Jack) Adapter



REVISION		DATE	CHANGED BY	APPROVED
ZONE	REV		DZINN	AGANWANI
	A	04/09/2024		
DESCRIPTION		INITIAL RELEASE		

 <b>Fairview Microwave®</b> an INFINIT® brand		 INTERPRET ALL DIMENSIONS AND TOLERANCES PER ASME Y14.5 SCALE NONE SHEET 1 OF 1
Website: <a href="http://www.FairviewMicrowave.com">www.FairviewMicrowave.com</a> Phone: 1.800.715.4396   1.972.649.6678		
DESCRIPTION <b>SMP FEMALE (JACK) TO SMP FEMALE (JACK) ADAPTER</b>		
SIZE	CAGE CODE	ITEM NO.
A	3FKR5	DZINN
DRAWN BY		REV
DZINN		A
FMAD9180		

UNLESS OTHERWISE SPECIFIED, LEADING DIMENSIONS ARE IN INCHES AND OTHER DIMENSIONS ARE IN MILLIMETERS.

TOLERANCES:  
 .X = ±.2 [5]      FRACTIONS ± 1/32  
 .XX = ±.02 [0.5]      ANGLES ± 1°  
 .XXX = ±.005 [0.13]

CABLE LENGTH TOLERANCES:  
 <12 [305] ≤ 60 [1524] = ±.1 [25] / -0  
 >60 [1524] ≤ 120 [3048] = ±.4 [102] / -0  
 >120 [3048] ≤ 300 [7620] = ±.6 [15] / -0

ALL DIMENSIONS ARE FOR REFERENCE ONLY. UNLESS OTHERWISE SPECIFIED, DIMENSIONS ARE IN INCHES. DIMENSIONS IN PARENTHESES ARE IN MILLIMETERS. DIMENSIONS AND LOCATIONS MAY VARY IN SIZE AND LOCATION. COLORS MAY VARY.

THE INFORMATION CONTAINED IN THIS DRAWING IS THE SOLE PROPERTY OF INFINITE ELECTRONICS, INC. ANY REPRODUCTION IN PART OR WHOLE WITHOUT THE WRITTEN PERMISSION OF INFINITE ELECTRONICS, INC. IS PROHIBITED. THESE COMMODITIES, TECHNOLOGY OR SOFTWARE ARE EXPORTED FROM THE UNITED STATES IN ACCORDANCE WITH THE EXPORT ADMINISTRATION REGULATIONS. DIVISION CONTRARY TO U.S. LAW PROHIBITED.

FM DS Rev-D4 A42b