

SMPM Female (Jack) to SMPM Female (Jack)  
Spring-loaded Adapter (Bullet), L=1.01 inch



**FMAD1748**

**Configuration**

- Mini SMP Female Connector 1
- Mini SMP Female Connector 2
- 50 Ohms Impedance

**Features**

- Gold Plated Beryllium Copper Contact
- Typical VSWR of 1.25:1 at 18GHz
- Straight Body Geometry
- 40 GHz Frequency Range

**Applications**

- General Purpose Test
- Allows board-to-board connections

**Description**

Mini SMP female to Mini SMP female adapter part number FMAD1748 from Fairview Microwave is in-stock and ships same day. This Fairview Mini SMP to Mini SMP adapter has a female to female gender configuration and is built of durable stainless steel. FMAD1748 Mini SMP female to Mini SMP female adapter operates to 40 GHz. This Mini SMP adapter allows for easier connections in tight spaces.

RF adapters can be used to enable connections between two connector types that would otherwise not mate. Certain RF adapter configurations can also be used to protect connectors on expensive equipment where the number of connect and disconnect cycles is high. An RF, microwave, or millimeter wave adapter is connected to the equipment and the commonly changed connection is made with the adapter which can be easily replaced when it wears out after high usage; such adapters are referred to as connector savers. Fairview Microwave also offers bulkhead, panel mount, hermetically sealed, reverse polarity, and isolated ground adapter varieties to serve all of your RF, microwave and millimeter wave needs.

**Electrical Specifications**

Description	Minimum	Typical	Maximum	Units
Frequency Range	DC		40	GHz
Impedance		50		Ohms
Insertion Loss			0.95	dB

**Performance by Frequency**

Description	F1	F2	F3	F4	F5	Units
Frequency Range	DC to 18					GHz
VSWR, Max	1.25:1					

**Mechanical Specifications**

**Size**

- Length 1.01 in [25.65 mm]
- Width 0.13 in [3.40 mm]
- Height 0.13 in [3.40 mm]
- Weight 0.00 lbs [1.27 g]

SMPM Female (Jack) to SMPM Female (Jack)  
Spring-loaded Adapter (Bullet), L=1.01 inch



**FMAD1748**

Mechanical Specification Notes:

500 cycles when mated with Smooth Bore and 100 Cycles when mated with Full Detent male connector.

\*Length 0.92 Inches when compressed

**Material Specifications**

Description	Connector 1		Connector 2	
	Material	Plating	Material	Plating
Type	Mini SMP Female		Mini SMP Female	
Contact	Beryllium Copper	Gold	Beryllium Copper	Gold
Insulation	PTFE		PTFE	
Outer Conductor	Beryllium Copper	Gold	Beryllium Copper	Gold
Body	Passivated Stainless Steel		Passivated Stainless Steel	

**Environmental Specifications**

**Temperature**

Operating Range -40 to +125 °C

**Compliance Certifications** (see [product page](#) for current document)

**Plotted and Other Data**

SMPM Female (Jack) to SMPM Female (Jack) Spring-loaded Adapter (Bullet), L=1.01 inch from Fairview Microwave is in-stock and available to ship same-day. All of our RF/microwave products are available off-the-shelf from our ISO 9001:2008 certified facilities in Lewisville, Texas. Fairview Microwave is RF on-demand.

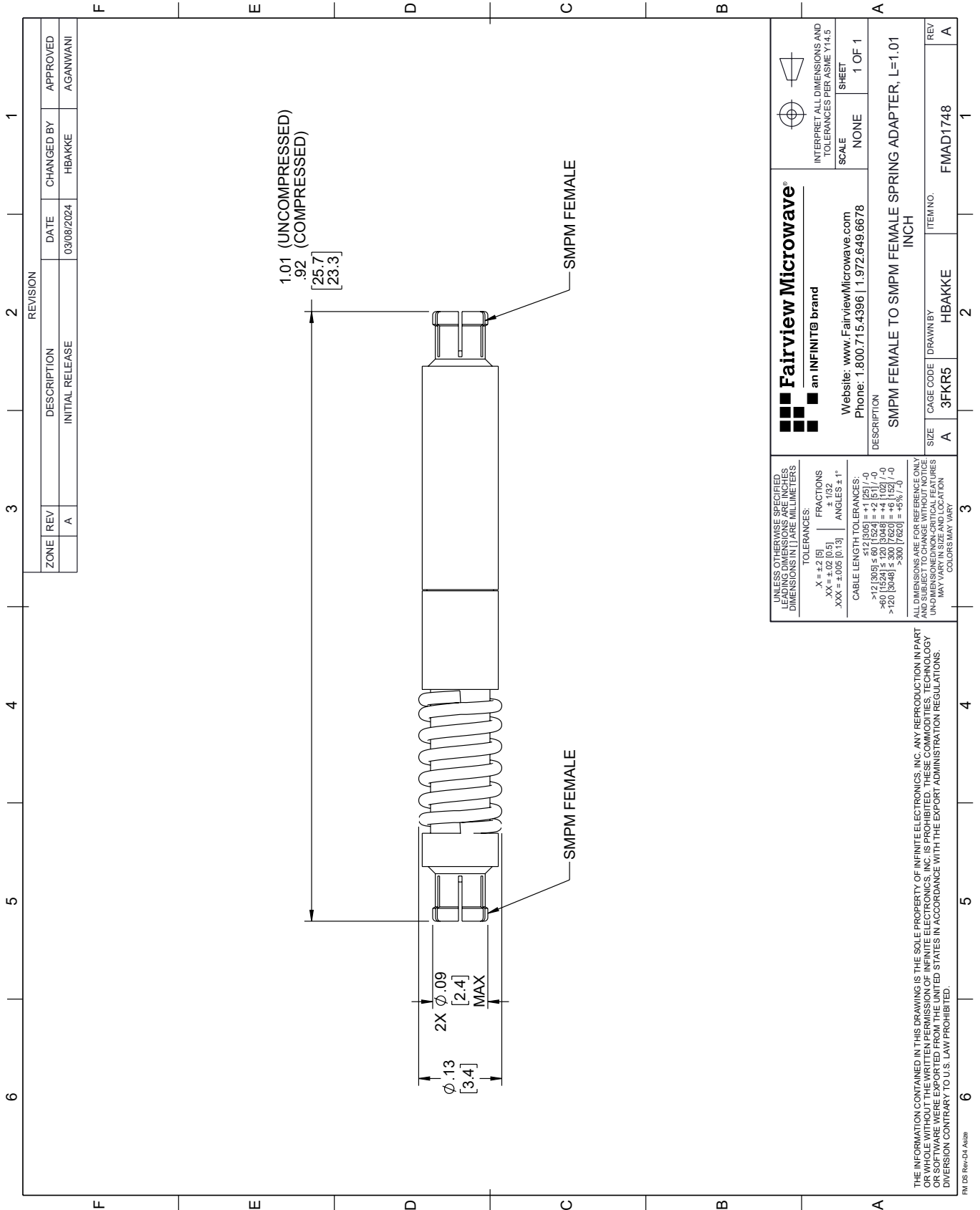
For additional information on this product, please click the following link: [SMPM Female \(Jack\) to SMPM Female \(Jack\) Spring-loaded Adapter \(Bullet\), L=1.01 inch FMAD1748](#)

URL: <https://www.fairviewmicrowave.com/mini-smp-female-to-mini-smp-female-adapter-with-passivated-stainless-steel-body-fmad1748-p.aspx>

The information contained within this document is accurate to the best of our knowledge and representative of the part described herein. It may be necessary to make modifications to the part and/or the documentation of the part in order to implement improvements. Fairview Microwave reserves the right to make such changes as required. Unless otherwise stated, all specifications are nominal. Fairview Microwave does not make any representation or warranty regarding the suitability of the part described herein for any particular purpose, and Fairview Microwave does not assume liability arising out of the use of any part or document.

# FMAD1748 CAD Drawing

SMPM Female (Jack) to SMPM Female (Jack) Spring-loaded Adapter (Bullet), L=1.01 inch



REVISION		DATE	CHANGED BY	APPROVED
ZONE	REV			
	A	03/08/2024	HBAKKE	AGANWANI
DESCRIPTION				
INITIAL RELEASE				

 an INFINIT® brand		Website: <a href="http://www.FairviewMicrowave.com">www.FairviewMicrowave.com</a> Phone: 1.800.715.4396   1.972.649.6678	INTERPRET ALL DIMENSIONS AND TOLERANCES PER ASME Y14.5 SCALE: NONE SHEET: 1 OF 1
UNLESS OTHERWISE SPECIFIED, LEADING DIMENSIONS ARE IN INCHES AND TRAILING DIMENSIONS ARE IN MILLIMETERS.		TOLERANCES: .X = +.2 [5] .XX = +.02 [0.5] .XXX = +.005 [0.13]	FRACTIONS: ± 1/32 ANGLES: ± 1°
ALL DIMENSIONS ARE FOR REFERENCE ONLY. UNDIMENSIONED/NON-CRITICAL FEATURES MAY VARY IN SIZE AND LOCATION. COLORS MAY VARY.		CABLE LENGTH TOLERANCES: <12 [305] ≤ 60 [1524] = +1 [25] / -0 >60 [1524] ≤ 120 [3048] = +4 [102] / -0 >120 [3048] ≤ 300 [7620] = +5% / -0	DESCRIPTION: SMPM FEMALE TO SMPM FEMALE SPRING ADAPTER, L=1.01 INCH SIZE: A CAGE CODE: 3FKR5 DRAWN BY: HBAKKE ITEM NO.: FMAD1748

THE INFORMATION CONTAINED IN THIS DRAWING IS THE SOLE PROPERTY OF INFINITE ELECTRONICS, INC. ANY REPRODUCTION IN PART OR WHOLE WITHOUT THE WRITTEN PERMISSION OF INFINITE ELECTRONICS, INC. IS PROHIBITED. THESE COMMODITIES, TECHNOLOGY OR SOFTWARE WERE EXPORTED FROM THE UNITED STATES IN ACCORDANCE WITH THE EXPORT ADMINISTRATION REGULATIONS. DIVISION CONTRARY TO U.S. LAW PROHIBITED.

FM DS Rev-D4 Alt2b