

Engineering Grade 2.92mm Female (Jack) to 1.85mm Female (Jack) Adapter with Stainless Steel Body

2.92mm female to 1.85mm female adapter part number FMAD1621 from Fairview Microwave is in-stock and ships same day. This Fairview 2.92mm to 1.85mm adapter has a female to female gender configuration and is built of durable stainless steel in a engineering grade design. FMAD1621 2.92mm female to 1.85mm female adapter operates to 40 GHz. The Fairview Microwave RF adapter provides excellent VSWR of 1.25:1 maximum. The 2.92mm connector mates mechanically with commercially available SMA and 3.5mm connectors. The 1.85mm connector mates mechanically with commercially available 2.4mm connectors.

RF adapters can be used to enable connections between two connector types that would otherwise not mate. Certain RF adapter configurations can also be used to protect connectors on expensive equipment where the number of connect and disconnect cycles is high. An RF, microwave, or millimeter wave adapter is connected to the equipment and the commonly changed connection is made with the adapter which can be easily replaced when it wears out after high usage; such adapters are referred to as connector savers. Fairview Microwave also offers bulkhead, panel mount, hermetically sealed, reverse polarity, and isolated ground adapter varieties to serve all of your RF, microwave and millimeter wave needs.

Electrical Specifications

Description	Min	Typ	Max	Units
Frequency Range	DC		40	GHz
VSWR			1.25:1	
Operating Voltage (AC)			150	Vrms
DWV (AC)			500	Vrms
Insulation Resistance	5,000			MOhms
RF Leakage			100	dB

Specifications by Frequency

Description	F1	F2	F3	F4	F5	Units
Frequency Range	DC to 2.5	2.5 to 5	5 to 10	10 to 20	20 to 40	GHz
Insertion Loss, Max	0.079	0.112	0.158	0.224	0.316	dB

Mechanical Specifications

Size

Length	0.86 in [21.80 mm]
Width	0.31 in [7.90 mm]
Height	0.31 in [7.90 mm]
Weight	0.02 lbs [6.80 g]

Description	Connector 1	Connector 2
Type	2.92mm Female	1.85mm Female
Polarity	Standard	Standard
Mating Cycles, Min	500	500
Mating Torque	11.47 in-lbs min [1.30 Nm] min	7.08 to 9.74 in-lbs [0.80 to 1.10 Nm]
Contact Captivation Axial Force, Min	4.9 lbs [2.22 kg]	4.5 lbs [2.04 kg]



Configuration:

- 2.92mm Female Connector 1
- 1.85mm Female Connector 2
- 50 Ohm
- Engineering Grade Design
- Straight Body Geometry

Features:

- VSWR of 1.25:1 max up to 40 GHz
- Gold Over Nickel Plated Beryllium Copper Contact

Applications:

- Enables Between Series Connections
- General Purpose Test

Fairview Microwave
 301 Leora Ln., Suite 100
 Lewisville, TX 75056
 Tel: 1-800-715-4396 / (972) 649-6678
 Fax: (972) 649-6689
www.fairviewmicrowave.com
sales@fairviewmicrowave.com

Coupling Proof Torque 15 in-lbs [1.7 Nm] 15 in-lbs [1.7 Nm]

Material Specifications

Description	Connector 1	Connector 2
Type	2.92mm Female	1.85mm Female
Contact Material	Beryllium Copper	Beryllium Copper
Contact Plating	Gold Over Nickel	Gold Over Nickel
Insulation Material	PPO	PPO
Body Material	Stainless Steel	Stainless Steel
Body Plating	Passivated	Passivated
Coupling Nut Material	Stainless Steel	Stainless Steel
Coupling Nut Plating	Passivated	Passivated

Environmental Specifications
Temperature

Operating Range

-55 to +105 deg C

Humidity

MIL-STD-202, Method 206

Thermal Shock

MIL-STD-202, Method 107, Condition B

Salt Spray

MIL-STD-202, Method 101, Condition B

Compliance Certifications (see [product page](#) for current document)

Plotted and Other Data

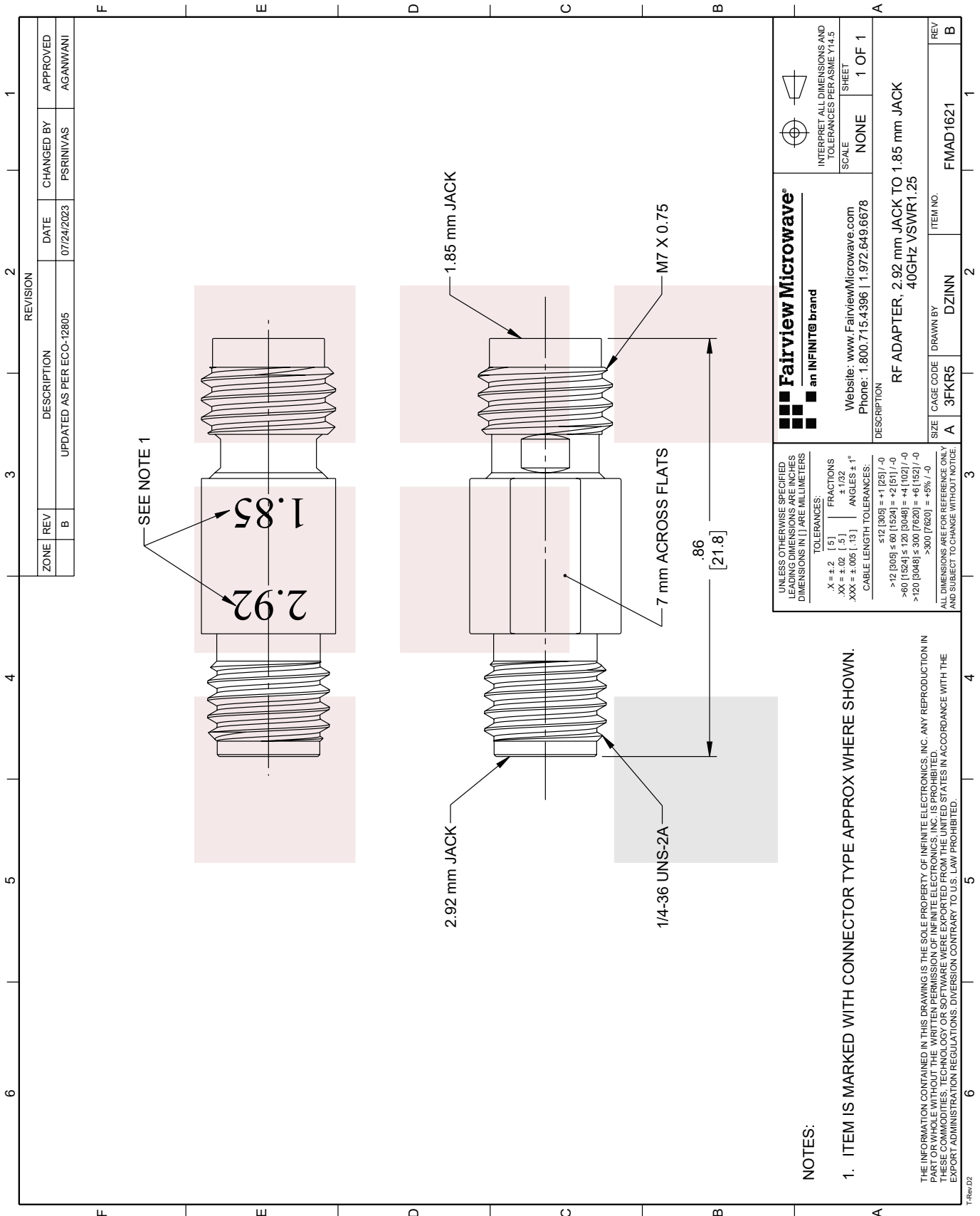
Notes:

Engineering Grade 2.92mm Female (Jack) to 1.85mm Female (Jack) Adapter with Stainless Steel Body from Fairview Microwave is in-stock and available to ship same-day. All of our RF/microwave products are available off-the-shelf from our ISO 9001:2008 certified facilities in Lewisville, Texas. Fairview Microwave is RF on-demand.

For additional information on this product, please click the following link: [Engineering Grade 2.92mm Female \(Jack\) to 1.85mm Female \(Jack\) Adapter with Stainless Steel Body FMAD1621](#)

URL: <https://www.fairviewmicrowave.com/engineering-grade-2.92mm-female-to-1.85mm-female-adapter-mil-std-202-method-206-with-stainless-steel-body-fmad1621-p.aspx>

The information contained in this document is accurate to the best of our knowledge and representative of the part described herein. It may be necessary to make modifications to the part and/or the documentation of the part, in order to implement improvements. Fairview Microwave reserves the right to make such changes as required. Unless otherwise stated, all specifications are nominal. Fairview Microwave does not make any representation or warranty regarding the suitability of the part described herein for any particular purpose, and Fairview Microwave does not assume any liability arising out of the use of any part or documentation.



ZONE		REVISION		DESCRIPTION		DATE		CHANGED BY		APPROVED	
	B			UPDATED AS PER ECO-12805		07/24/2023		PSRINIVAS		AGANWANI	

<p>Fairview Microwave an INFINIT[®] brand</p> <p>Website: www.FairviewMicrowave.com Phone: 1.800.715.4396 1.972.649.6678</p>		<p>INTERPRET ALL DIMENSIONS AND TOLERANCES PER ASME Y14.5</p> <p>SCALE: NONE</p> <p>SHEET: 1 OF 1</p>	
<p>DESCRIPTION: RF ADAPTER, 2.92 mm JACK TO 1.85 mm JACK 40GHz VSWR1.25</p>			
SIZE	CAGE CODE	DRAWN BY	ITEM NO.
A	3FKR5	DZINN	FMAD1621

NOTES:

1. ITEM IS MARKED WITH CONNECTOR TYPE APPROX WHERE SHOWN.

UNLESS OTHERWISE SPECIFIED, LEADING DIMENSIONS ARE IN INCHES, DIMENSIONS IN [] ARE MILLIMETERS.

TOLERANCES:
 .X = ±.2 [.5] FRACTIONS
 .XX = ±.02 [.5] ±.1/32
 .XXX = ±.005 [.13] ANGLES ± 1°

CABLE LENGTH TOLERANCES:
 ≤12 (305) = +1 (25) / -0
 >12 (305) ≤ 60 (1524) = +2 (51) / -0
 >60 (1524) ≤ 120 (3048) = +4 (102) / -0
 >120 (3048) ≤ 300 (7620) = +6 (152) / -0
 >300 (7620) = +5% / -0

ALL DIMENSIONS ARE FOR REFERENCE ONLY AND SUBJECT TO CHANGE WITHOUT NOTICE.

THE INFORMATION CONTAINED IN THIS DRAWING IS THE SOLE PROPERTY OF INFINITE ELECTRONICS, INC. ANY REPRODUCTION IN PART OR WHOLE WITHOUT THE WRITTEN PERMISSION OF INFINITE ELECTRONICS, INC. IS PROHIBITED. THESE COMMODITIES, TECHNOLOGY OR SOFTWARE WERE EXPORTED FROM THE UNITED STATES IN ACCORDANCE WITH THE EXPORT ADMINISTRATION REGULATIONS. DIVERSION CONTRARY TO U.S. LAW PROHIBITED.