

## Low PIM 7/16 DIN Female (Jack) to 4.3-10 Male (Plug) Adapter, Tri-Metal Plated Brass Body, High Temp, 1.2 VSWR

7/16 DIN female to 4.3-10 male adapter part number FMAD1170 from Fairview Microwave is in-stock and ships same day. This Fairview 7/16 DIN to 4.3-10 adapter has a female to male gender configuration in a low PIM design. FMAD1170 7/16 DIN female to 4.3-10 male adapter operates to 6 GHz. The Fairview Microwave RF adapter provides excellent VSWR of 1.2:1 maximum and passive intermodulation of -163 dBc maximum.

RF adapters can be used to enable connections between two connector types that would otherwise not mate. Certain RF adapter configurations can also be used to protect connectors on expensive equipment where the number of connect and disconnect cycles is high. An RF, microwave, or millimeter wave adapter is connected to the equipment and the commonly changed connection is made with the adapter which can be easily replaced when it wears out after high usage; such adapters are referred to as connector savers. Fairview Microwave also offers bulkhead, panel mount, hermetically sealed, reverse polarity, and isolated ground adapter varieties to serve all of your RF, microwave and millimeter wave needs.

### Electrical Specifications

Description	Min	Typ	Max	Units
Frequency Range	DC		6	GHz
VSWR			1.2:1	
Passive Intermodulation			-163	dBc

Electrical Specification Notes:  
Values at 25° C, sea level.

### Mechanical Specifications

Size	
Length	1.62 in [41.15 mm]
Width	1.14 in [28.96 mm]
Height	1.14 in [28.96 mm]
Weight	3.13 lbs [1.42 kg]

Description	Connector 1	Connector 2
Type	7/16 DIN Female	4.3-10 Male
Polarity	Standard	Standard
Mating Cycles, Min	500	500



### Configuration:

- 7/16 DIN Female Connector 1
- 4.3-10 Male Connector 2
- 50 Ohm
- Low PIM Design
- Straight Body Geometry

### Features:

- VSWR of 1.2:1 max up to 6 GHz
- PIM levels better than -163 dBc
- Silver Plated Beryllium Copper Contact

### Applications:

- Enables Between Series Connections
- General Purpose Test
- Low PIM Applications
- Mobile Communications Systems
- Base Stations
- Distributed Antenna Systems (DAS)
- Small Cells
- Feeder Cables

Fairview Microwave  
301 Leora Ln., Suite 100  
Lewisville, TX 75056  
Tel: 1-800-715-4396 / (972) 649-6678  
Fax: (972) 649-6689  
[www.fairviewmicrowave.com](http://www.fairviewmicrowave.com)  
[sales@fairviewmicrowave.com](mailto:sales@fairviewmicrowave.com)

### Material Specifications

Description	Connector 1	Connector 2
Type	7/16 DIN Female	4.3-10 Male
Contact Material	Beryllium Copper	Beryllium Copper
Contact Plating	Silver	Silver
Insulation Material		PTFE
Outer Contact Material	Brass	
Outer Contact Plating	Tri-Metal	
Body Material	Brass	Brass
Body Plating	Tri-Metal	Tri-Metal
Gasket Material		Silicone Rubber
Coupling Nut Material		Brass
Coupling Nut Plating		Tri-Metal

### Environmental Specifications

#### Temperature

Operating Range -40 to 155 deg C

### Compliance Certifications (see [product page](#) for current document)

### Plotted and Other Data

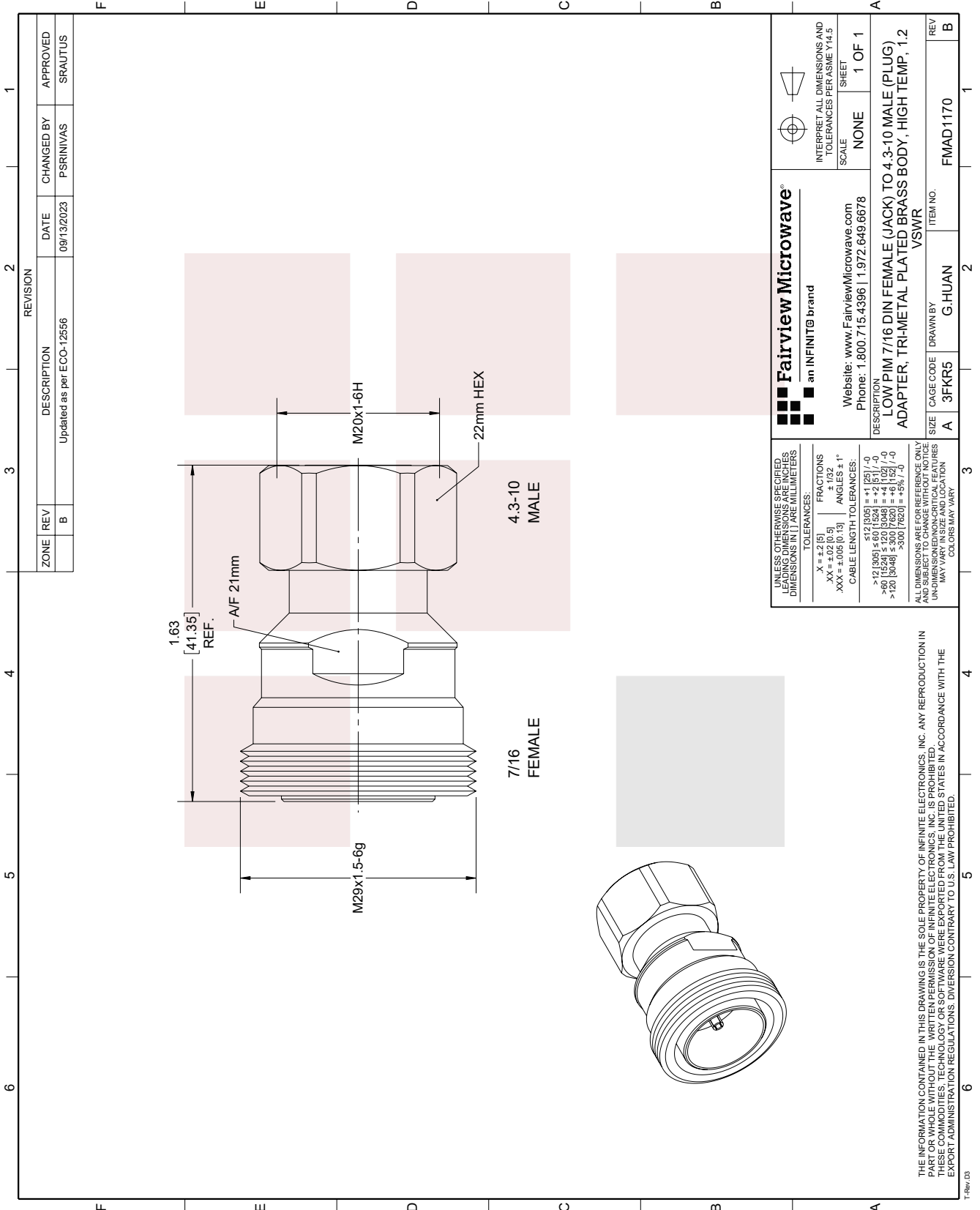
Notes:

Low PIM 7/16 DIN Female (Jack) to 4.3-10 Male (Plug) Adapter, Tri-Metal Plated Brass Body, High Temp, 1.2 VSWR from Fairview Microwave is in-stock and available to ship same-day. All of our RF/microwave products are available off-the-shelf from our ISO 9001:2008 certified facilities in Lewisville, Texas. Fairview Microwave is RF on-demand.

For additional information on this product, please click the following link: [Low PIM 7/16 DIN Female \(Jack\) to 4.3-10 Male \(Plug\) Adapter, Tri-Metal Plated Brass Body, High Temp, 1.2 VSWR FMAD1170](#)

URL: <https://www.fairviewmicrowave.com/low-pim-7-16-din-female-4.3-10-male-adapter-fmad1170-p.aspx>

The information contained in this document is accurate to the best of our knowledge and representative of the part described herein. It may be necessary to make modifications to the part and/or the documentation of the part, in order to implement improvements. Fairview Microwave reserves the right to make such changes as required. Unless otherwise stated, all specifications are nominal. Fairview Microwave does not make any representation or warranty regarding the suitability of the part described herein for any particular purpose, and Fairview Microwave does not assume any liability arising out of the use of any part or documentation.



ZONE		REVISION		APPROVED	
REV	DESCRIPTION	DATE	CHANGED BY	REV	APPROVED
B	Updated as per ECO-12556	09/13/2023	PSRINIVAS		SRAUTUS

<p>Fairview Microwave<sup>®</sup> an INFINIT<sup>®</sup> brand</p> <p>Website: <a href="http://www.FairviewMicrowave.com">www.FairviewMicrowave.com</a> Phone: 1.800.715.4396   1.972.649.6678</p>		<p>INTERPRET ALL DIMENSIONS AND TOLERANCES PER ASME Y14.5</p> <p>SCALE: NONE</p> <p>SHEET: 1 OF 1</p>
<p>DESCRIPTION: LOW PIM 7/16 DIN FEMALE (JACK) TO 4.3-10 MALE (PLUG) ADAPTER, TRI-METAL PLATED BRASS BODY, HIGH TEMP, 1.2 VSWR</p>		
SIZE: A	CAGE CODE: 3FKR5	ITEM NO.: FMAD1170
REV: B	DRAWN BY: G-HUAN	REV: B

UNLESS OTHERWISE SPECIFIED, LEADING DIMENSIONS ARE IN INCHES DIMENSIONS IN [ ] ARE MILLIMETERS

TOLERANCES:  
 .X = ±.2 [5]  
 .XX = ±.02 [0.5]  
 .XXX = ±.005 [0.13]

FRACTIONS: ± 1/32  
 ANGLES: ± 1°  
 CABLE LENGTH TOLERANCES:  
 >12 [305] ≤ 60 [1524] = ±.25 [6.35] / -0  
 >60 [1524] ≤ 300 [7620] = ±.152 [3.86] / -0  
 >300 [7620] = ±.5% / -0

ALL DIMENSIONS ARE FOR REFERENCE ONLY AND SUBJECT TO CHANGE WITHOUT NOTICE UNLESS OTHERWISE SPECIFIED. DIMENSIONS MAY VARY. COLORS MAY VARY.

THE INFORMATION CONTAINED IN THIS DRAWING IS THE SOLE PROPERTY OF INFINITE ELECTRONICS, INC. ANY REPRODUCTION IN PART OR WHOLE WITHOUT THE WRITTEN PERMISSION OF INFINITE ELECTRONICS, INC. IS PROHIBITED. THIS DRAWING IS THE PROPERTY OF INFINITE ELECTRONICS, INC. AND IS TO BE USED ONLY FOR THE SPECIFIC PROJECT AND FOR EXPORT ADMINISTRATION REGULATIONS. DIVERSION CONTRARY TO U.S. LAW PROHIBITED.