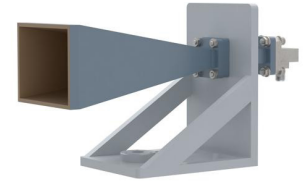


WR-42 Standard Gain Horn with 20 dBi gain, 2.92mm Female connector, with Pre-Installed L Mount



FM2WAN042-20KF

Features

- 18 GHz to 26.5 GHz
- WR-42 Waveguide Band
- 20 dBi Nominal Gain
- 2.92mm Female Connector
- Pre-Installed L Mount
- Integrates with Positioning Systems

Applications

- Antenna Measurements
- Wireless Communication
- Laboratory Use
- Microwave Radio Systems
- Radome Testing
- Automotive Antenna Test Solutions
- Radar Cross Section
- Satellite Antenna Testing

Description

The FM2WAN042-20KF standard gain horn antenna with pre-installed L mount (also known as waveguide horn) from Fairview Microwave is part of our comprehensive selection of waveguide antennas. This standard gain horn is mated with a WR-42 to 2.92mm female waveguide to coaxial adapter and operates from 18 GHz to 26.5 GHz.

Our FM2WAN042-20KF standard gain horn antenna with pre-installed L mount has a nominal gain of 20 dBi with a Horizontal and Vertical HPBW (Half Power Beam Width) of 17.5 dB and 17.3 dB respectively. Fairview Microwave's 2.92mm female to WR-42 standard gain horns are available in 10, 15 and 20 dBi models with pyramidal shape and connectorized input.

Waveguide antennas, such as the FM2WAN042-20KF are used in a wide variety of applications due to the high-power handling capability, low loss, high directivity, and near constant electrical performance. Our WR-42 waveguide antennas with 2.92mm female interface is part of over 40,000 RF, microwave and millimeter wave components from Fairview Microwave available worldwide and ship same day.

Configuration

Design	WR-42
Coaxial Interface	2.92mm Female

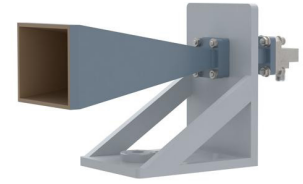
Electrical Specifications

Description	Minimum	Typical	Maximum	Units
Frequency Range	18		26.5	GHz
Gain		20		
Horizontal Half Power Beam Width		17.5		Degrees
Vertical Half Power Beam Width		17.3		
Waveguide to Coaxial Adapter				
VSWR			1.4:1	

Mechanical Specifications

Size	
Length	10.291 in [261.39 mm]
Width	6.774 in [172.06 mm]
Height	4.674 in [118.72 mm]
Weight	0.8115 lbs [368.09 g]

WR-42 Standard Gain Horn with 20 dBi gain, 2.92mm Female connector, with Pre-Installed L Mount



FM2WAN042-20KF

RF Connector

Type 2.92mm Female

Waveguide Interface

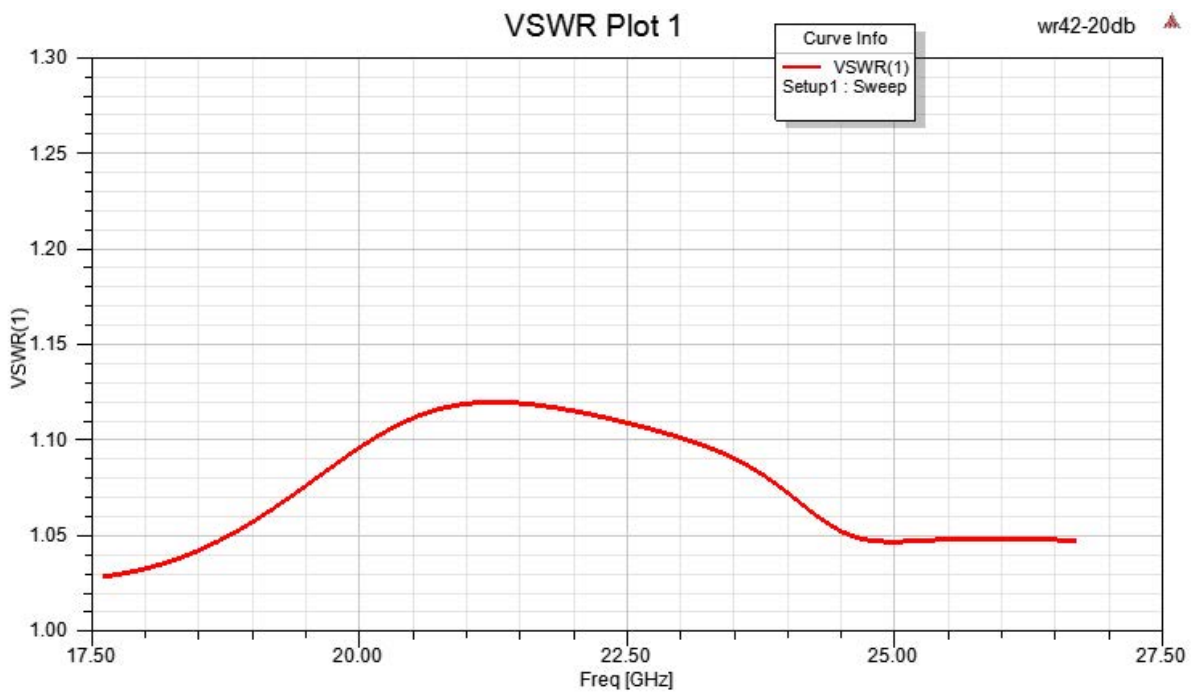
Waveguide Size WR-42

Compliance Certifications (see [product page](#) for current document)

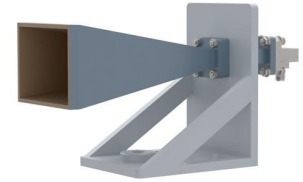
Plotted and Other Data

Notes:

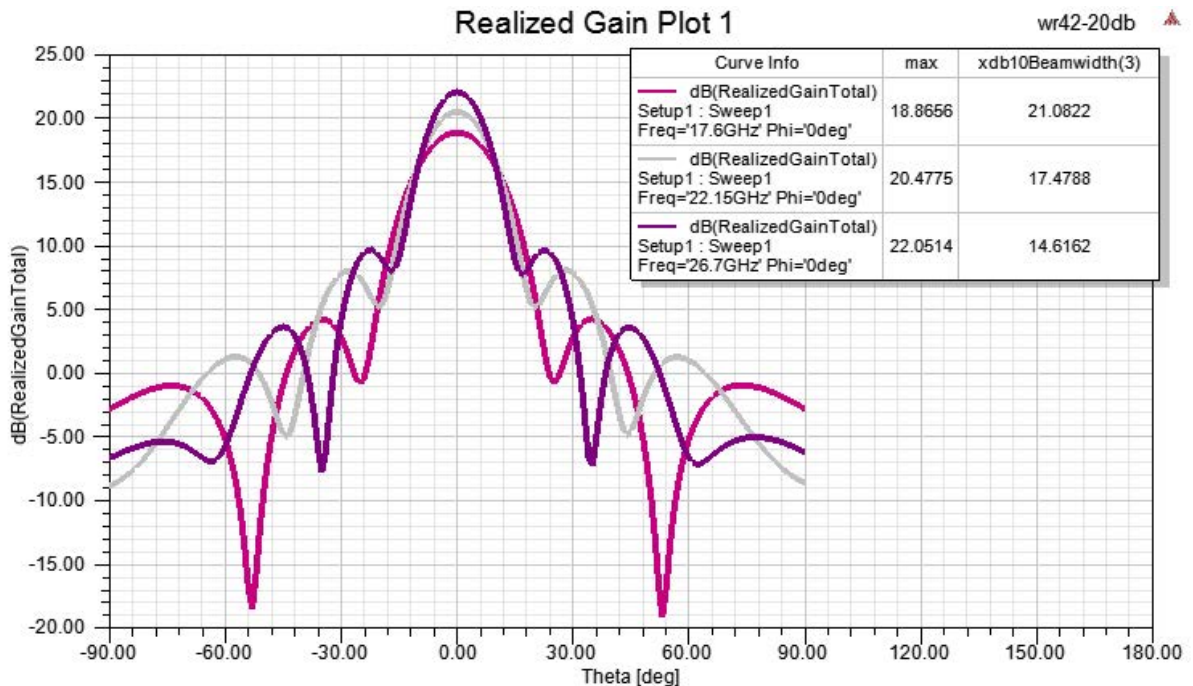
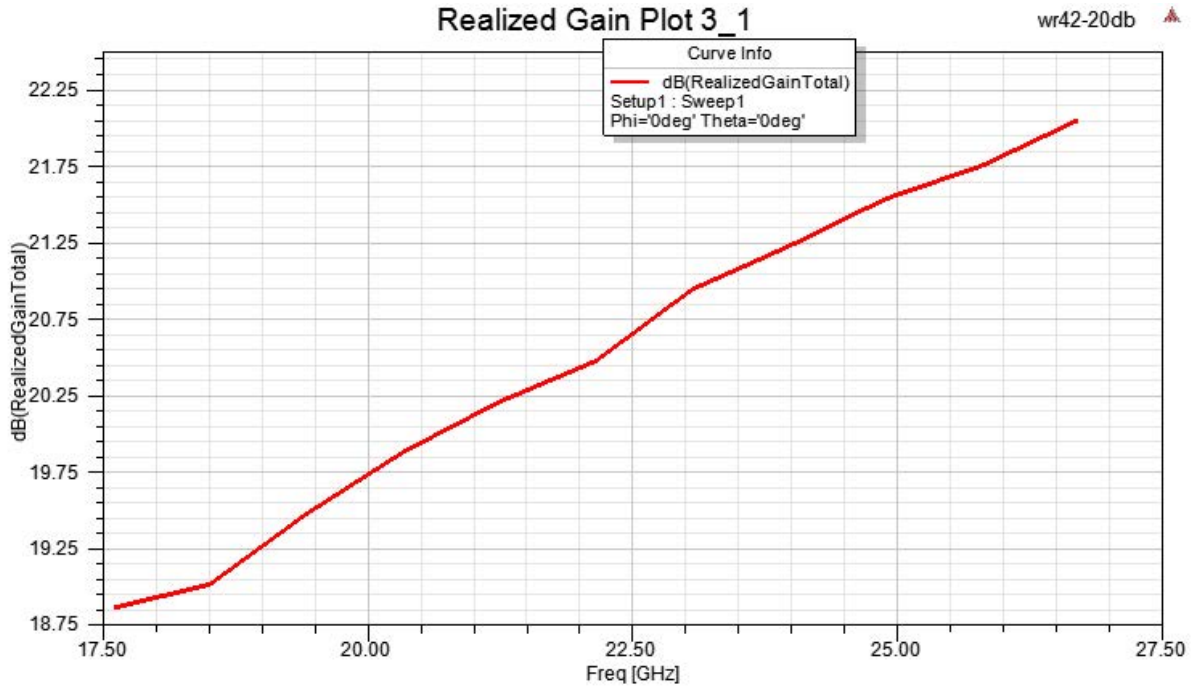
Typical Performance Data



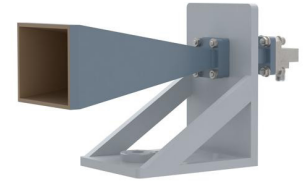
WR-42 Standard Gain Horn with 20 dBi gain, 2.92mm Female connector, with Pre-Installed L Mount



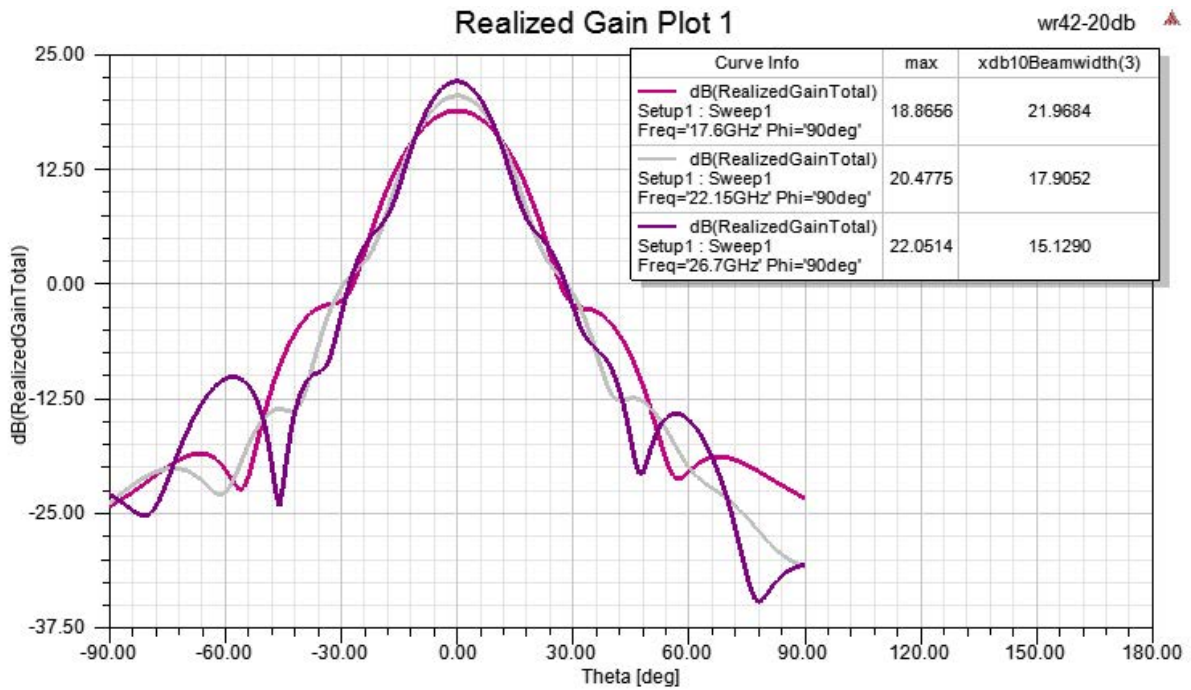
FM2WAN042-20KF



WR-42 Standard Gain Horn with 20 dBi gain, 2.92mm Female connector, with Pre-Installed L Mount



FM2WAN042-20KF



WR-42 Standard Gain Horn with 20 dBi gain, 2.92mm Female connector, with Pre-Installed L Mount from Fairview Microwave is in-stock and available to ship same-day. All of our RF/microwave products are available off-the-shelf from our ISO 9001:2008 certified facilities in Lewisville, Texas. Fairview Microwave is RF on-demand.

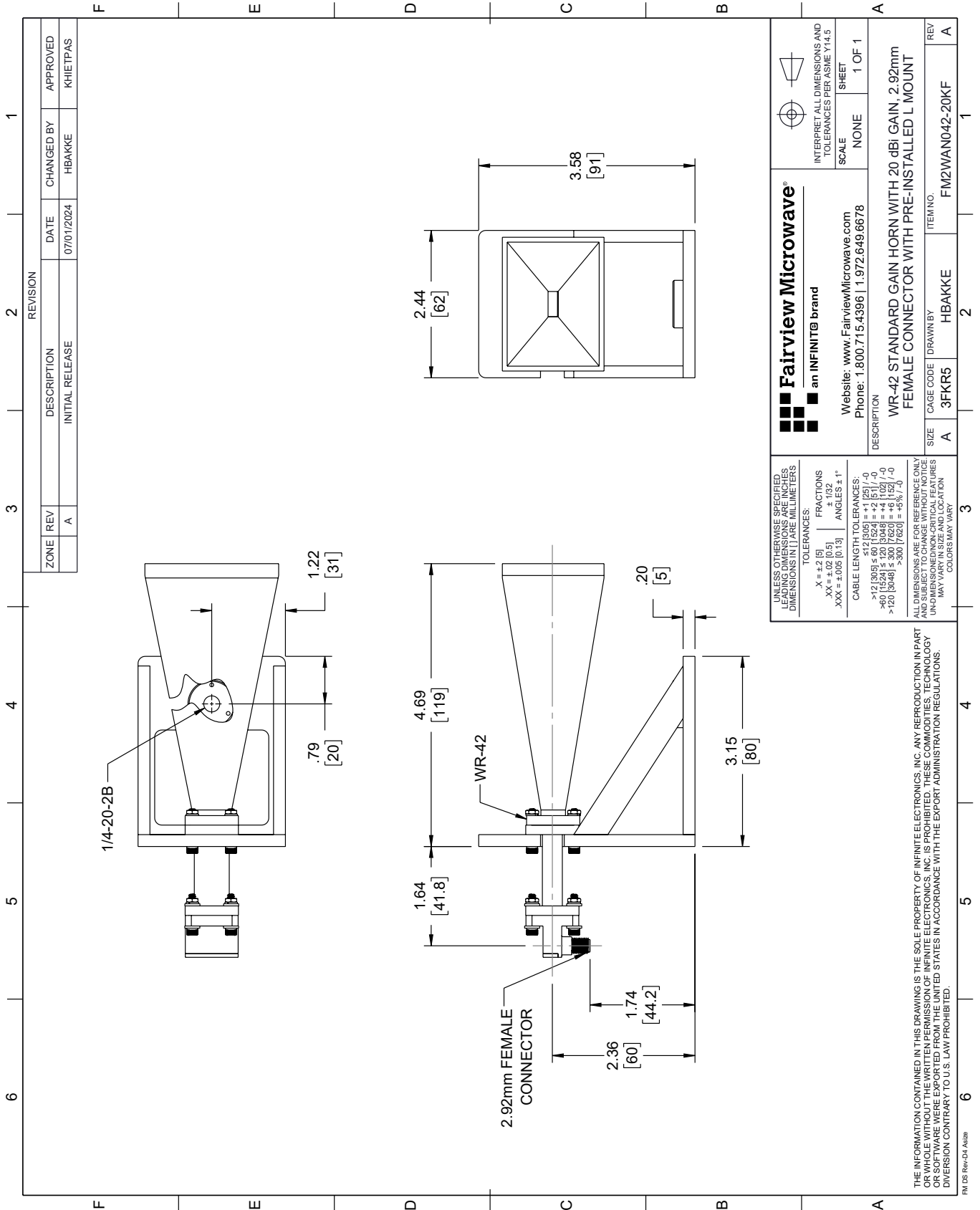
For additional information on this product, please click the following link: [WR-42 Standard Gain Horn with 20 dBi gain, 2.92mm Female connector, with Pre-Installed L Mount FM2WAN042-20KF](#)

URL: <https://www.fairviewmicrowave.com/wr-42-standard-gain-horn-20-dbi-2.92mm-fm2wan042-20kf-p.aspx>

The information contained within this document is accurate to the best of our knowledge and representative of the part described herein. It may be necessary to make modifications to the part and/or the documentation of the part in order to impliment improvements. Fairview Microwave reserves the right to make such changes as required. Unless otherwise stated, all specifications are nominal. Fairview Microwave does not make any representation or warranty regarding the suitability of the part described herein for any particular purpose, and Fairview Microwave does not assume liability arising out of the use of any part or document.

FM2WAN042-20KF CAD Drawing

WR-42 Standard Gain Horn with 20 dBi gain, 2.92mm Female connector, with Pre-Installed L Mount



Fairview Microwave®
an INFINIT® brand

Website: www.FairviewMicrowave.com
Phone: 1.800.715.4396 | 1.972.649.6678

INTERPRET ALL DIMENSIONS AND TOLERANCES PER ASME Y14.5

SCALE: NONE
SHEET: 1 OF 1

DESCRIPTION: WR-42 STANDARD GAIN HORN WITH 20 dBi GAIN, 2.92mm FEMALE CONNECTOR WITH PRE-INSTALLED L MOUNT

SIZE	A	CAGE CODE	3FKR5	DRAWN BY	HBAKKE	ITEM NO.	FM2WAN042-20KF	REV	A
------	---	-----------	-------	----------	--------	----------	----------------	-----	---