

WR-137 Twistable Flexible Waveguide in 36 Inch Using CMR Flange with a 5.85 to 8.2 GHz Frequency Range



FM-W137TF007-36

Features

- WR-137 waveguide
- Flexes in both the E and H plane
- 5.85 GHz to 8.2 GHz Frequency Range
- Brass flanges with a brass body
- Neoprene sleeve provides added protection and mechanical support

Applications

- Allows expansion/contraction due to thermal issues
- Test Benches
- Microwave Radio
- Eliminates installation problems caused by misalignment
- Provides vibration isolation

Description

The FM-W137TF007-36 is part of Fairview Microwave's family of flexible, twistable waveguides which operates in the 5.85 to 8.2 GHz range. The waveguide body is made of a helically wound silver coated brass strip. It can be twisted and/or bent in both the E and H planes without impairing VSWR or attenuation. The waveguide is covered by a neoprene jacket which protects the waveguide and provides mechanical support

Electrical Specifications

Description	Min	Typ	Max	Units
Frequency Range	5.85		8.2	GHz
VSWR		1.09:1		
Insertion Loss		0.11		dB
Input Power			2	kWatts

Electrical Specification Notes:
VSWR is per 2 foot.
Insertion Loss is dB per foot.

Mechanical Specifications

Waveguide Size	WR-137
Waveguide Design	Twistable
Section Length	36 in [914.4 mm]
E-Plane Minimum Bend Radius, One Time	4 in [101.6 mm]
H-Plane Minimum Bend Radius, One Time	8 in [203.2 mm]

Description	Flange 1	Waveguide	Flange 2
Type		WR-137	
Designation	CMR		CMR
Material	Brass	Brass	Brass

Temperature Operating Range	-50 to 100 deg C
---------------------------------------	------------------

WR-137 Twistable Flexible Waveguide in 36 Inch Using CMR Flange with a 5.85 to 8.2 GHz Frequency Range



FM-W137TF007-36

Compliance Certifications (see [product page](#) for current document)

Plotted and Other Data

- Notes:
- Notes, Plotted Data

Typical Performance Data

WR-137 Twistable Flexible Waveguide in 36 Inch Using CMR Flange with a 5.85 to 8.2 GHz Frequency Range from Fairview Microwave is in-stock and available to ship same-day. All of our RF/microwave products are available off-the-shelf from our ISO 9001:2008 certified facilities in Lewisville, Texas. Fairview Microwave is RF on-demand.

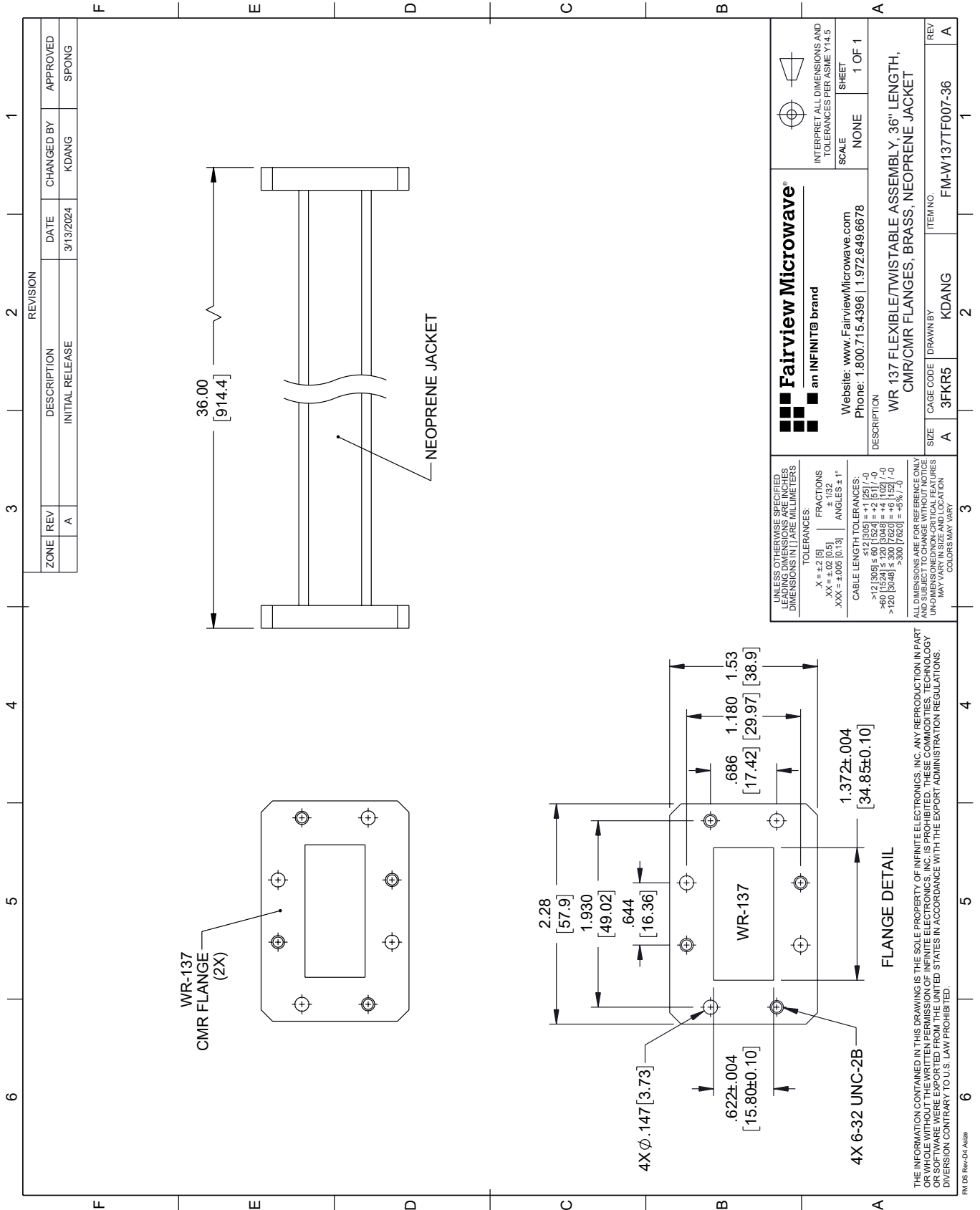
For additional information on this product, please click the following link: [WR-137 Twistable Flexible Waveguide in 36 Inch Using CMR Flange with a 5.85 to 8.2 GHz Frequency Range FM-W137TF007-36](#)

URL: <https://www.fairviewmicrowave.com/wr-137-twistable-flexible-waveguide-cmr-5.85-8.2-ghz-fm-w137tf007-36-p.aspx>

The information contained within this document is accurate to the best of our knowledge and representative of the part described herein. It may be necessary to make modifications to the part and/or the documentation of the part in order to implement improvements. Fairview Microwave reserves the right to make such changes as required. Unless otherwise stated, all specifications are nominal. Fairview Microwave does not make any representation or warranty regarding the suitability of the part described herein for any particular purpose, and Fairview Microwave does not assume liability arising out of the use of any part or document.

FM-W137TF007-36 CAD Drawing

WR-137 Twistable Flexible Waveguide in 36 Inch Using CMR Flange with a 5.85 to 8.2 GHz Frequency Range



REVISION		DATE	CHANGED BY	APPROVED
ZONE	REV	DESCRIPTION	INITIAL RELEASE	
A				SPONG

Fairview Microwave®
an INFINIT® brand

Website: www.FairviewMicrowave.com
Phone: 1.800.715.4396 | 1.972.649.6678

SCALE: NONE
SHEET: 1 OF 1

INTERPRET ALL DIMENSIONS AND TOLERANCES PER ASME Y14.5

DESCRIPTION: WR 137 FLEXIBLE/TWISTABLE ASSEMBLY, 36" LENGTH, CMR/CMR FLANGES, BRASS, NEOPRENE JACKET

ITEM NO.: FM-W137TF007-36

SIZE: A
CAGE CODE: 3FKR5
DRAWN BY: KDANG

UNLESS OTHERWISE SPECIFIED, LEADING DIMENSIONS ARE IN INCHES AND DIMENSIONS IN [] ARE MILLIMETERS.

TOLERANCES:
 .X = ±.2 [5]
 .XX = ±.02 [0.5]
 .XXX = ±.005 [0.13]
 FRACTIONS ± 1/32
 ANGLES ± 1°

CABLE LENGTH TOLERANCES:
 <12 [305] ≤ 60 [1524] = ±.1 [25] / -0
 >60 [1524] ≤ 120 [3048] = ±.1 [25] / -0
 >120 [3048] ≤ 300 [7620] = ±.1 [25] / -0
 >300 [7620] = ±.1 [25] / -0

ALL DIMENSIONS ARE FOR REFERENCE ONLY. UNLESS OTHERWISE SPECIFIED, LEADING DIMENSIONS ARE IN INCHES AND DIMENSIONS IN [] ARE MILLIMETERS. UNDIMENSIONED NON-CRITICAL FEATURES MAY VARY IN SIZE AND LOCATION. COLORS MAY VARY.

THE INFORMATION CONTAINED IN THIS DRAWING IS THE SOLE PROPERTY OF INFINITE ELECTRONICS, INC. ANY REPRODUCTION IN PART OR WHOLE WITHOUT THE WRITTEN PERMISSION OF INFINITE ELECTRONICS, INC. IS PROHIBITED. THESE COMMODITIES, TECHNOLOGY OR SOFTWARE WERE EXPORTED FROM THE UNITED STATES IN ACCORDANCE WITH THE EXPORT ADMINISTRATION REGULATIONS. DIVISION CONTRARY TO U.S. LAW PROHIBITED.

FM DS Rev-D4 Alt2