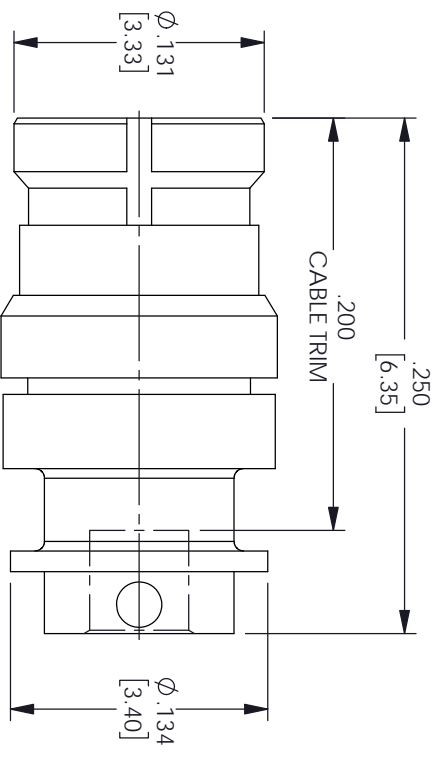
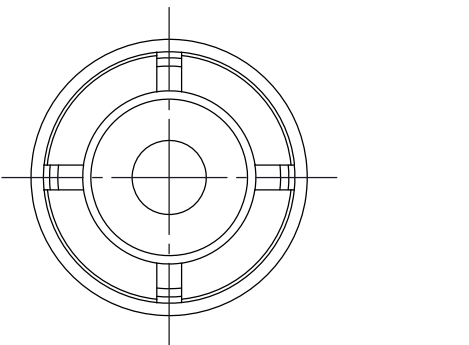


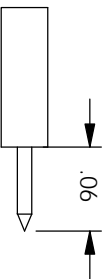
REVISIONS			
REV.	DESCRIPTION	DATE	APPROVED
B	PCR SC5146 20220920	10/12/2022	AGANWANI



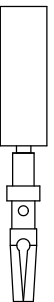
MMSP FEMALE

ASSEMBLY PROCEDURES

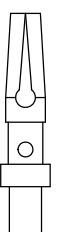
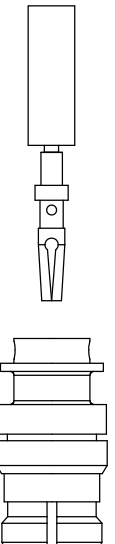
1. STRIP CABLE AS SHOWN. DO NOT NICK CENTER CONDUCTOR.



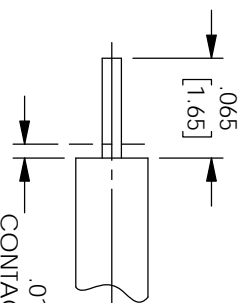
2. PLACE CONTACT OVER CENTER CONDUCTOR AS SHOWN. SOLDER CONTACT TO CENTER CONDUCTOR AS SHOWN.



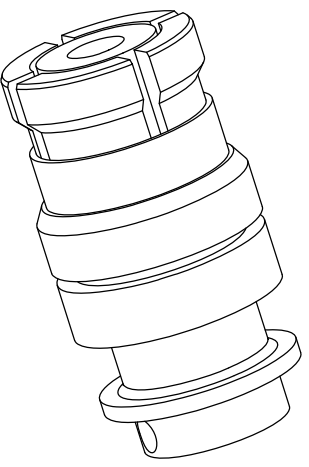
3. INSERT CABLE AND CONTACT INTO CONNECTOR BODY UNTIL FULLY ENGAGED. SOLDER BODY TO CABLE.



CONTACT



STRIPPING DIMENSIONS



THESE COMMODITIES, TECHNOLOGY OR SOFTWARE WERE EXPORTED FROM THE UNITED STATES IN ACCORDANCE WITH THE EXPORT ADMINISTRATION REGULATIONS, DIVERSION CONTRARY TO U.S. LAW PROHIBITED.



UNLESS OTHERWISE SPECIFIED LEADING DIMENSIONS ARE INCHES		THIRD-ANGLE PROJECTION	
DIMENSIONS IN [] ARE MILLIMETERS			
TOLERANCES:		THE INFORMATION AND DESIGN IN THIS DOCUMENT IS THE PROPERTY OF FAIRVIEW MICROWAVE CORPORATION. ALL RIGHTS RESERVED.	
CABLE LENGTH (L) TOLERANCES:		SCALE	
L ± .12 [3.05] = +.1 [2.5] / -0		1	
12 [305] < L ≤ 60 [1524] = +.2 [5.1] / -0		N/A	
60 [1524] < L ≤ 120 [3048] = +.4 [102] / -0			
120 [3048] < L ≤ 300 [7620] = +.6 [152] / -0			
300 [7620] < L = +5%L / -0			
FRACTIONS		SHEET	
.X = ±.2 [5.08]		1	
.XX = ±.02 [.51]		OF	
.XXX = ±.005 [.13]		1	
ANGLES ± 1°			

SIZE	GAGE CODE	DRAWN BY	ITEM NO.	REV
A	3FKRS	JYOU	SC5146	B