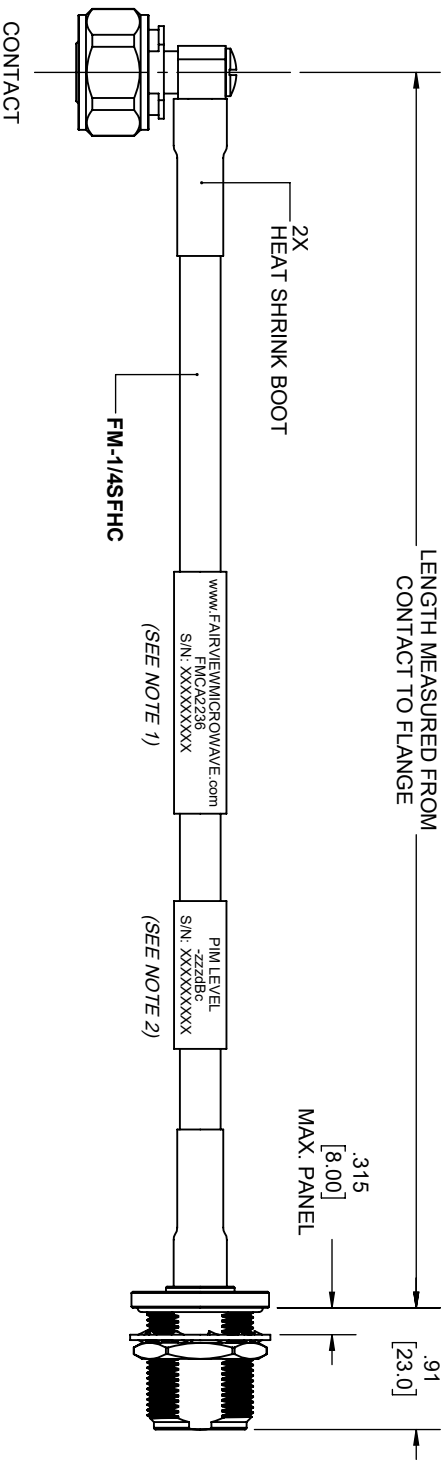
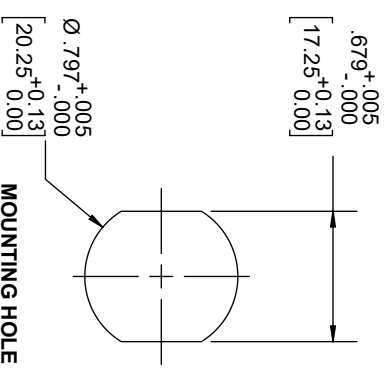


REVISIONS			
REV.	DESCRIPTION	DATE	APPROVED
A	INITIAL RELEASE	1/19/2021	S. ELLIS



4.1/9.5 Mini DIN MALE
RA

4.1/9.5 Mini DIN FEMALE
BULKHEAD



NOTES:

- CABLES 84" AND UNDER HAVE 1 LABEL CENTERED. CABLES OVER 84" HAVE 2 LABELS, ONE AT EACH END 12.0" FROM THE END OF THE CONNECTOR.
- 6" FROM CABLE END 1 PLACE FOR ALL LENGTHS OF CABLE.

THESE COMMODITIES, TECHNOLOGY OR SOFTWARE WERE EXPORTED FROM THE UNITED STATES IN ACCORDANCE WITH THE EXPORT ADMINISTRATION REGULATIONS, DIVERSION CONTRARY TO U.S. LAW PROHIBITED.



TITLE		UNLESS OTHERWISE SPECIFIED LEADING DIMENSIONS ARE INCHES		THIRD-ANGLE PROJECTION	
SIZE		DIMENSIONS IN [] ARE MILLIMETERS		THE INFORMATION AND DESIGN IN THIS DOCUMENT IS THE PROPERTY OF FAIRVIEW MICROWAVE CORPORATION. ALL RIGHTS RESERVED.	
A	CAGE CODE	TOLERANCES:		SCALE	
3FKRS	3FKRS	CABLE LENGTH (L) TOLERANCES:		N/A	
DRAWN BY		CABLE LENGTH (L) TOLERANCES:		SHEET	
K.DANG		L ± 1/2 (806) = +1 (25) / -0		1	
ITEM NO.		12 (305) < L ≤ 60 (1524) = +2 (51) / -0		OF	
FMC A2236		60 (1524) < L ≤ 120 (3048) = +4 (102) / -0		1	
REV		120 (3048) < L ≤ 300 (7620) = +6 (152) / -0		1	
A		300 (7620) < L = +5%L / -0			