

6

5

4

3

2

1

F

E

D

C

B

A

F

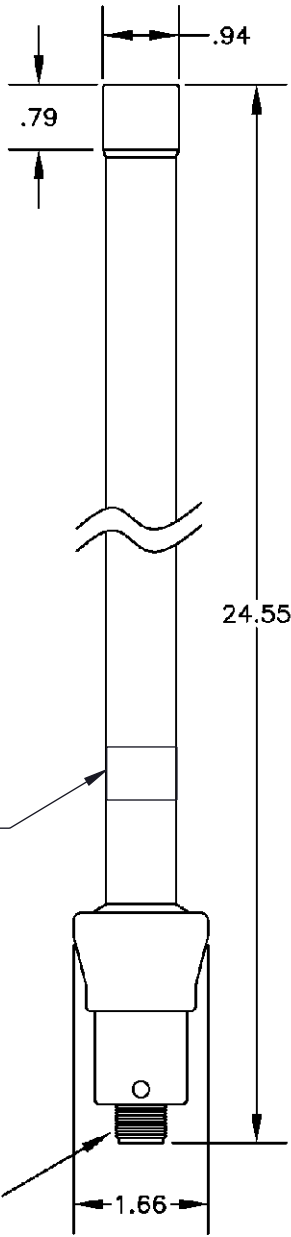
E

D

C

B

A



LABEL PER ILS-100-03  
SEE NOTE 1

.625-24 UNEF-2A



- NOTES:  
1. LABEL PER ILS-100-03. FOR INTERNAL USE ONLY.  
LABEL LOCATION FOR REFERENCE ONLY.

THE INFORMATION CONTAINED IN THIS DRAWING IS THE SOLE PROPERTY OF INFINITE ELECTRONICS, INC. ANY REPRODUCTION IN PART OR WHOLE WITHOUT THE WRITTEN PERMISSION OF INFINITE ELECTRONICS, INC. IS PROHIBITED. THESE COMMODITIES, TECHNOLOGY OR SOFTWARE WERE EXPORTED FROM THE UNITED STATES IN ACCORDANCE WITH THE EXPORT ADMINISTRATION REGULATIONS. DIVERSION CONTRARY TO U.S. LAW PROHIBITED.

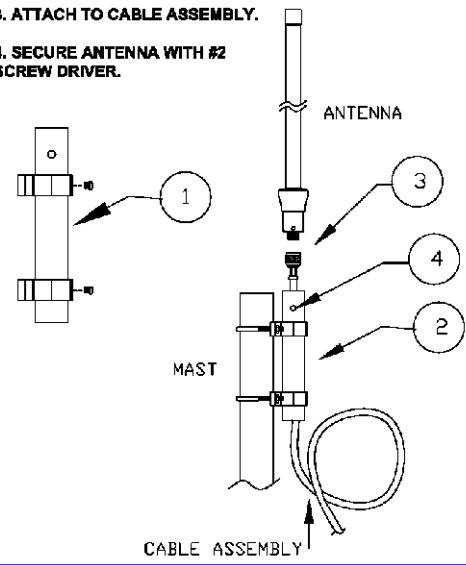
| REVISION |      |                 |            |            |          |
|----------|------|-----------------|------------|------------|----------|
| ZONE     | REV. | DESCRIPTION     | DATE       | CHANGED BY | APPROVED |
|          | A    | INITIAL RELEASE | 01/04/2023 |            | KHIETPAS |

| ELECTRICAL PROPERTIES |                |
|-----------------------|----------------|
| FREQUENCY RANGE       | 902 TO 928 MHz |
| IMPEDANCE             | 50 OHM         |
| VSWR                  | ≤ 2.0          |
| RADIATION             | OMNI           |
| GAIN                  | 5 dBi          |
| POLARIZATION          | VERTICAL       |

| MECHANICAL PROPERTIES |                     |
|-----------------------|---------------------|
| WHIP                  | FIBERGLASS          |
| CONNECTOR             | N FEMALE            |
| CONNECTOR MATERIAL    | BRASS NICKEL PLATED |
| CONTACT               | GOLD PLATED         |
| WEIGHT                | 464.5 g (est)       |
| TEMPERATURE RANGE     | -40°C TO +85°C      |

**ASSEMBLY PROCEDURES**

1. INSERT TUBE INTO BRACKETS AND SECURE WITH A #2 PHILIPS OR FLAT HEAD SCREW DRIVER.
2. INSTALL ON MAST USING HARDWARE SUPPLIED.
3. ATTACH TO CABLE ASSEMBLY.
4. SECURE ANTENNA WITH #2 SCREW DRIVER.



UNLESS OTHERWISE SPECIFIED LEADING DIMENSIONS ARE INCHES DIMENSIONS IN [ ] ARE MILLIMETERS

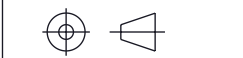
| TOLERANCES:          |                  |
|----------------------|------------------|
| .X = ±.2 [ 5 ]       | FRACTIONS ± 1/32 |
| .XX = ±.02 [ .5 ]    | ANGLES ± 1°      |
| .XXX = ±.005 [ .13 ] |                  |

| CABLE LENGTH TOLERANCES: |                 |
|--------------------------|-----------------|
| >12 [305]                | = +1 [25] / -0  |
| >12 [305] ≤ 60 [1524]    | = +2 [51] / -0  |
| >60 [1524] ≤ 120 [3048]  | = +4 [102] / -0 |
| >120 [3048] ≤ 300 [7620] | = +6 [152] / -0 |
| >300 [7620]              | = +5% / -0      |

ALL DIMENSIONS ARE FOR REFERENCE ONLY AND SUBJECT TO CHANGE WITHOUT NOTICE.



Website: [www.FairviewMicrowave.com](http://www.FairviewMicrowave.com)  
Phone: 1.800.715.4396 | 1.972.649.6678



|       |        |
|-------|--------|
| SCALE | SHEET  |
| NONE  | 1 OF 1 |

DESCRIPTION  
FIXED ANTENNA OPERATES FROM 902 MHz TO 928 MHz WITH A NOMINAL 5 dBi GAIN N FEMALE INPUT CONNECTOR

|      |           |          |          |     |
|------|-----------|----------|----------|-----|
| SIZE | CAGE CODE | DRAWN BY | ITEM NO. | REV |
| A    | 3FKR5     | DMAY     | FM51028  | A   |

6

5

4

3

2

1